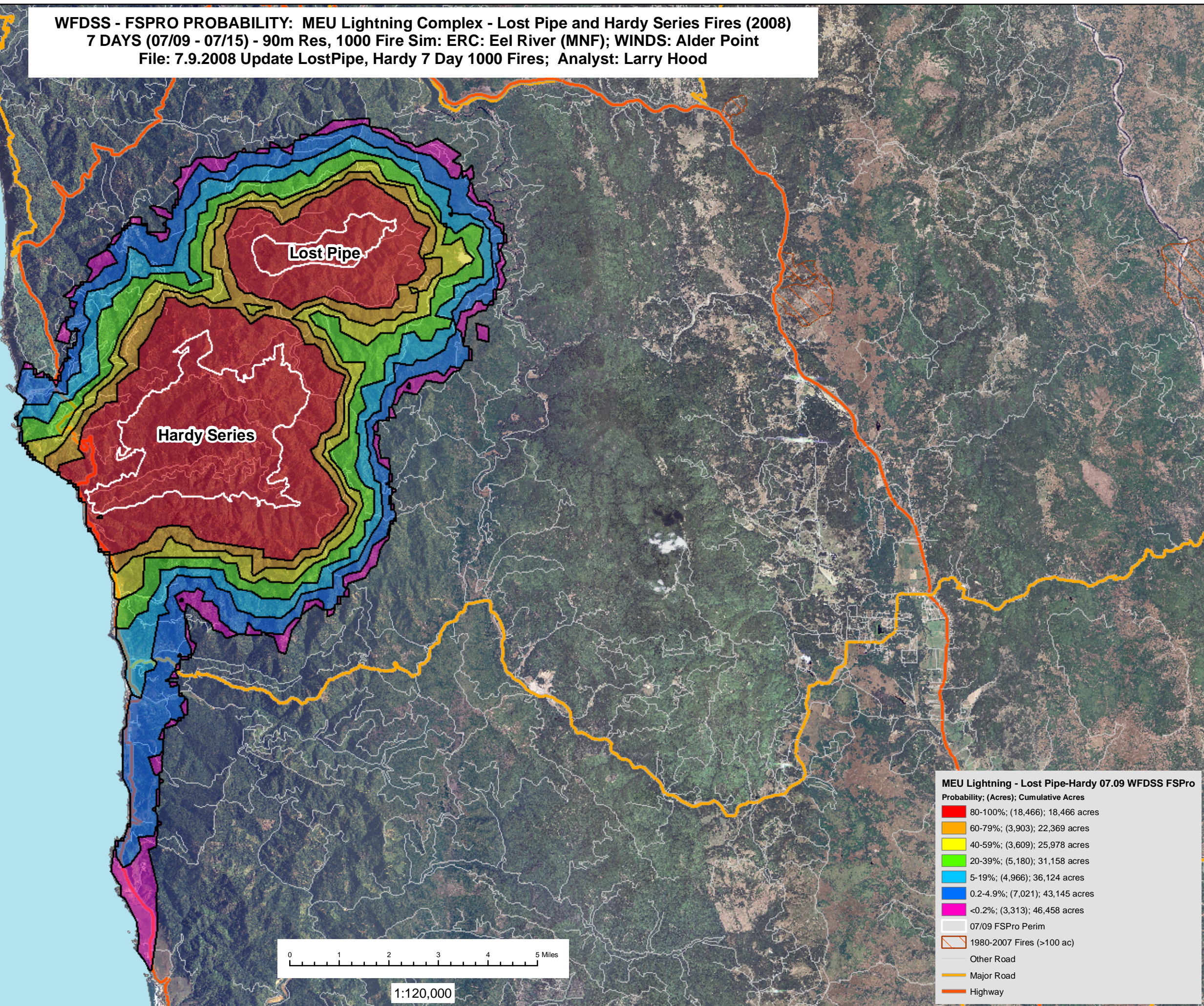


WFDSS - FSPRO PROBABILITY: MEU Lightning Complex - Lost Pipe and Hardy Series Fires (2008)  
7 DAYS (07/09 - 07/15) - 90m Res, 1000 Fire Sim: ERC: Eel River (MNF); WINDS: Alder Point  
File: 7.9.2008 Update LostPipe, Hardy 7 Day 1000 Fires; Analyst: Larry Hood



**MEU Lightning - Lost Pipe-Hardy 07.09 WFDSS FSPro**

Probability; (Acres); Cumulative Acres

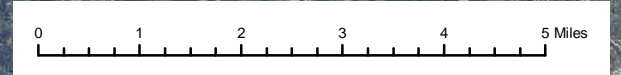
80-100%	(18,466)	18,466 acres
60-79%	(3,903)	22,369 acres
40-59%	(3,609)	25,978 acres
20-39%	(5,180)	31,158 acres
5-19%	(4,966)	36,124 acres
0.2-4.9%	(7,021)	43,145 acres
<0.2%	(3,313)	46,458 acres

- 07/09 FSPro Perim
- 1980-2007 Fires (>100 ac)
- Other Road
- Major Road
- Highway

R5 FAM  
Fire Behavior Branch, Predictive Services  
McClellan, CA

with support from:  
WFDSS  
Wildland Fire  
Decision Support System

RMRS  
Rocky Mtn. Research Station  
Note: Projection based on preliminary data



1:120,000