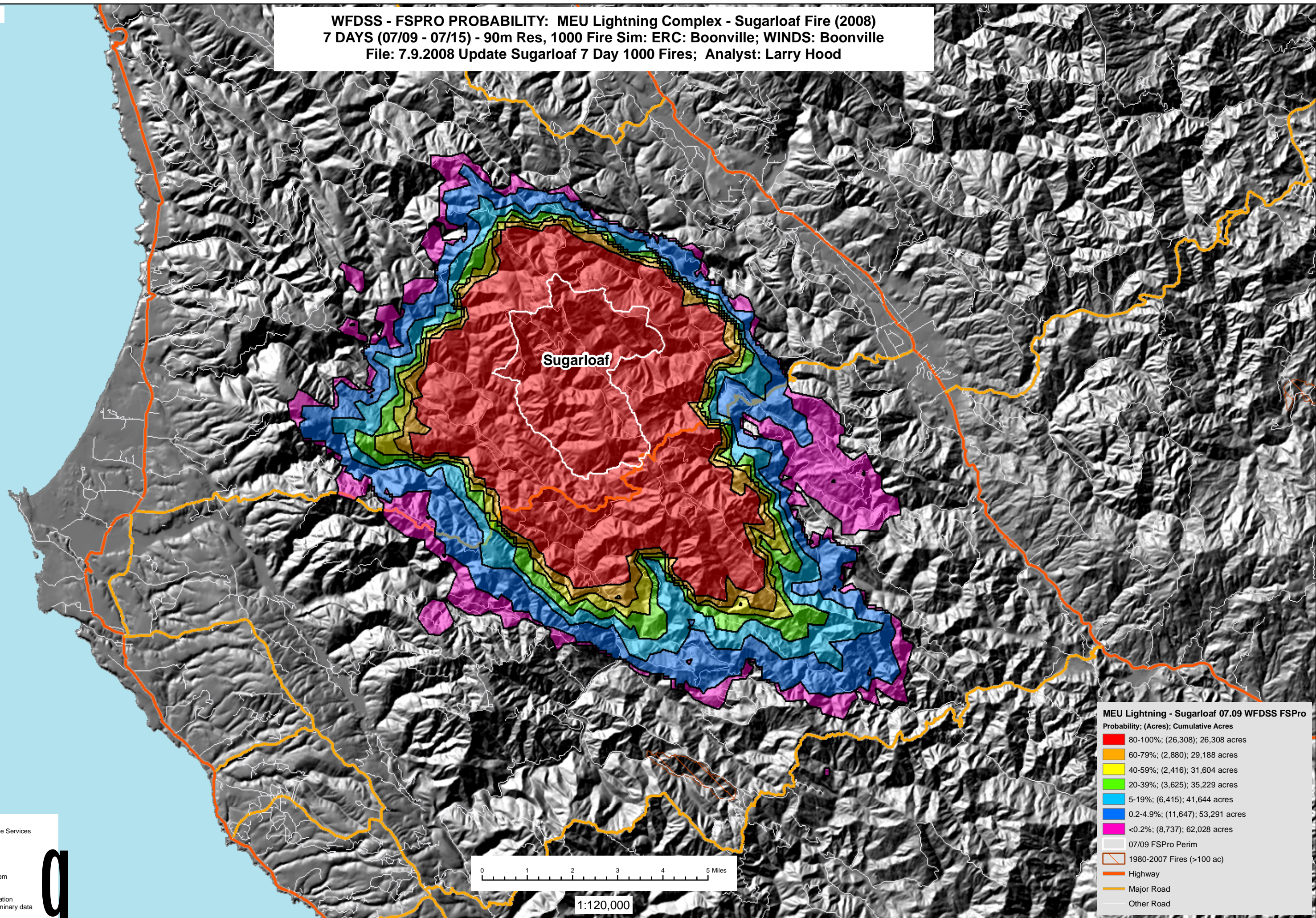


WFDSS - FSPRO PROBABILITY: MEU Lightning Complex - Sugarloaf Fire (2008)
7 DAYS (07/09 - 07/15) - 90m Res, 1000 Fire Sim: ERC: Boonville; WINDS: Boonville
File: 7.9.2008 Update Sugarloaf 7 Day 1000 Fires; Analyst: Larry Hood

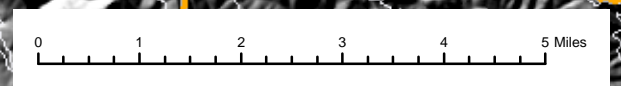


Sugarloaf

MEU Lightning - Sugarloaf 07.09 WFDSS FSPro
Probability; (Acres); Cumulative Acres

80-100%	(26,308); 26,308 acres
60-79%	(2,880); 29,188 acres
40-59%	(2,416); 31,604 acres
20-39%	(3,625); 35,229 acres
5-19%	(6,415); 41,644 acres
0.2-4.9%	(11,647); 53,291 acres
<0.2%	(8,737); 62,028 acres

- 07/09 FSPro Perim
- 1980-2007 Fires (>100 ac)
- Highway
- Major Road
- Other Road



1:120,000

R5 FAM
Fire Behavior Branch, Predictive Services
McClellan, CA

with support from:
WFDSS
Wildland Fire
Decision Support System

RMRS
Rocky Mtn. Research Station
Note: Projection based on preliminary data

