

# HUMBOLDT FIRE

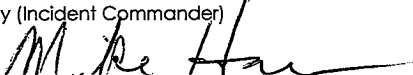
**CA-BTU-7089**



## **Incident Action Plan**

**6-14-2008**

**0700-0700**


<b>INCIDENT OBJECTIVES</b>	1. Incident Name <b>HUMBOLDT</b>	2. Date June 13, 2008	3. Time 2000 Hours
4. Operational Period			
<b>0700 to 0700</b>	<b>June 14, 2008</b>	<b>CABTU007089</b>	
5. General Control Objectives for the Incident (include alternatives)			
<b>Control Objectives -</b> <ul style="list-style-type: none"> <li>• <b>Keep fire West of Pentz Magalia Rd.</b></li> <li>• <b>Keep fire East of Highway 99</b></li> <li>• <b>Keep fire South of Highway 32, Crown Point Road/Village Drive to De Sabla Reservoir</b></li> <li>• <b>Keep fire North of Durham Pentz Rd.</b></li> </ul> <b>Management Objectives -</b> <ul style="list-style-type: none"> <li>• <b>Provide for Firefighter and public safety.</b></li> <li>• <b>Keep public informed.</b></li> <li>• <b>Address needs and help facilitate homeowners returning to the area impacted by the fire.</b></li> <li>• <b>Keep costs commensurate with risk.</b></li> </ul>			
6. Weather Forecast for Period			
<b>Sunny skies with areas of smoke... Hot.</b> <b>Maximum Temperatures: Increasing to 92 - 96</b> <b>Minimum Humidity's: 13 to 17 %</b> <b>East-Southeast 2 to 5 mph in the morning, becoming Southwest 3 to 6 mph by 1600-hours</b>			
7. General Safety Message			
<b>1. Be aware of fire weather changes.</b> <b>2. Review and follow LCES, 18-situations that shout watch out, and 10-fire orders.</b> <b>3. Conduct tailgate safety meetings with assigned personnel.</b> <b>4. Watch for power-line hazards and traffic on narrow roads.</b> <b>5. Protect against heat injuries.</b>			
8. Attachments (mark if attached)			
<input checked="" type="checkbox"/> Organization List - ICS 203	<input checked="" type="checkbox"/> Incident Maps (separate)	<input type="checkbox"/>	
<input checked="" type="checkbox"/> Fire Weather	<input checked="" type="checkbox"/> Travel Plan	<input type="checkbox"/>	
<input checked="" type="checkbox"/> Fire Behavior Forecast	<input checked="" type="checkbox"/> Training Specialist	<input type="checkbox"/>	
<input checked="" type="checkbox"/> Safety Message	<input checked="" type="checkbox"/> 214 Unit Log	<input type="checkbox"/>	
<input checked="" type="checkbox"/> Div. Assignment Lists - ICS 204	<input checked="" type="checkbox"/> <i>215B SAFETY ANALYSIS</i>	<input type="checkbox"/>	
<input checked="" type="checkbox"/> Comm. Plan - ICS 205	<input type="checkbox"/>	<input type="checkbox"/>	
<input checked="" type="checkbox"/> Medical Plan - ICS 206	<input type="checkbox"/>	<input type="checkbox"/>	
<input checked="" type="checkbox"/> Air Operations-ICS 220	<input type="checkbox"/>	<input type="checkbox"/>	
9. Prepared by (Planning Section Chief) Terrie Ridenhour (PSC-T)		10. Approved by (Incident Commander) Mike Howe 	

## ORGANIZATION ASSIGNMENT LIST

1. Incident Name	
<b>HUMBOLDT</b>	
2. Date	3. Time
<b>6-14-2008</b>	<b>2400-Hours</b>
4. Operational Period	
<b>0700-0700</b>	
Position	Name
5. Incident Commander and Staff	
Incident Commander	<b>Bob Wallen/Mike Howe (T)/Ron Myers (T)</b>
Deputy	<b>Mark Reina</b>
Safety Officer	<b>Scott Upton / Dave Munch</b>
Information Officer	<b>Kevin Colburn / Janet Upton</b>
Liaison Officer	<b>Jeff Turpstra</b>
6. Agency Representative	
Agency	Name
Butte Co. OES	<b>Steve Weston</b>
Butte Co SO	<b>Sgt. Al Smith</b>
CHP	<b>Scott Gillingwater</b>
Cal OES	<b>Dan Tinnel</b>
PG&E	<b>Brad Boyes</b>
Butte Co DPW	<b>Mike Crump</b>
7. Planning Section	
Chief	<b>Scott Jalbert</b>
Deputy	<b>Dan Hall / Terrie Ridenhour(T)</b>
Resources Unit	<b>Jeff Schimke / Linda Green</b>
Situation Unit	<b>Helge Eng / Paul Medeiros</b>
Documentation Unit	
Demobilization Unit	<b>Karie Tidwell</b>
Technical Specialists	
Human Resources	
Training	<b>Tom Reaves</b>
Fban	<b>Andy Reiling</b>
GIS Tech	<b>Monty Messenger</b>
Hired Equip	<b>Jason Morris</b>
meteorologist	<b>Chris Jordan</b>
8. Logistics Section	
Chief	<b>Kim Price / Dawn Pedersen (T)</b>
Deputy	
Supply Unit	<b>Scott Ernest</b>
Facilities Unit	<b>Remy Hancock</b>
Ground Support Unit	<b>Danny Sykes</b>
Communications Unit	<b>Brian Kornegay</b>
Medical Unit	<b>Grayson Magana</b>
Motel	<b>Jeffrey Burrows</b>
Ordering	<b>Adam Mattos</b>

9. Operations Section		
Chief	<b>Day Ops Jim Sweet / Night Ops Steve Emerick</b>	
Deputy	<b>Jerry Burke</b>	
a. Branch I - Division/Groups		
Branch Director	<b>Darrell Wolf</b>	
Deputy		
Division/Group	<b>A</b>	<b>Richard Case</b>
Division/Group	<b>B</b>	<b>Steven Hollett</b>
b. Branch II - Division/Groups		
Branch Director	<b>Jack Lefort</b>	
Deputy		
Division/Group	<b>D</b>	<b>Albert Savage</b>
Division/Group	<b>J</b>	<b>Mike Shorrock</b>
c. Branch III - Division/Groups		
Branch Director		
Deputy		
Division/Group	<b>X/Y/Z</b>	<b>Chris Post / Krishan Timberlake (T)</b>
Division/Group		
d. Branch IV - Division/Groups		
Branch Director	<b>William Roberts</b>	
Division	<b>K</b>	<b>Lynn Duncan</b>
Division	<b>L/M</b>	<b>Blankenheim</b>
Division	<b>N/O/T</b>	<b>Scott Wood</b>
e. Paradise Structure Branch		
Branch Director	<b>Rob Cone</b>	
Neal Str. Group	<b>Tony Brownell</b>	
Round Vly Str. Group	<b>David Petroninovich</b>	
Wayland Str. Group	<b>Chris Haile</b>	
Wilder Str. Group	<b>John Arrigoni</b>	
Centerville Str. Group	<b>TJ Welch</b>	
Silver Staging	<b>Bowersox</b>	
College Staging	<b>Tuan Flower</b>	
Paradise Staging	<b>Nick Boutista</b>	
Fireline Sup Repair	<b>Ruth Norman</b>	
f. Air Operations Branch		
Air Operations Branch Director	<b>David Junette</b>	
Air Attack Supervisor		
Air Support Supervisor	<b>Randy Rapp</b>	
Helicopter Coordinator		
Air Tanker Coordinator		
10. Finance Section		
Chief	<b>Vance Moulton</b>	
Deputy		
Time Unit	<b>Denise Ehnat</b>	
Procurement Unit	<b>Michael Borelli</b>	
Compensation/Claims Unit	<b>John Owens</b>	
Cost Unit	<b>Phil Anso</b>	
Prepared by (Resource Unit Leader) <b>Terrie Ridenhour (PSC-T)</b>		
<i>Terrie Ridenhour</i>		

# FIRE WEATHER FORECAST

FORECAST NO: 02 NAME OF FIRE: Humboldt  
PREDICTION FOR: Day and Night Shift UNIT: All Units  
SHIFT DATE: 14 June Saturday SIGNED: Chris Jordan  
Incident Meteorologist  
DATE AND TIME  
FORECAST ISSUED: 13 June 2008 2000 PDT  


**WEATHER DISCUSSION:** Upper level high pressure continues over California bringing hot and dry conditions. A diurnal wind pattern will bring light downslope winds in the morning with southwest winds through the afternoon and evening. Wind speeds will remain rather light and steady however they will be gusty and erratic where drainages align with the wind direction. Winds tonight become downslope from the East. Tonight will be slightly cooler with better humidity recovery than the last few nights. Southwest flow aloft will continue through the weekend bringing above normal temperatures and southwest afternoon winds.

## **WEATHER FORECAST for Today:**

**WEATHER:** Sunny skies with areas of smoke. Hot.  
**TEMPERATURES:** Above 80 degrees by 1000 with maximums 92 near Paradise to 96 near highway 99...little change.  
**HUMIDITY:** Below 20% by 1000 with minimums 13% to 17%...little change.  
**20-FOOT WINDS:**  
**RIDGES/EXPOSED CANYONS -** East-southeast 2 to 5 mph until 0900, then becoming south-southwest 5 to 9 mph. Gusts up to 18 mph after 1300.  
**CANYONS/VALLEYS -** Downslope 2 to 4 mph becoming southwest 3 to 6 mph by 1300.  
**INVERSION:** Light-moderate smoke in drainages should lift by 0900.

---

## **WEATHER FORECAST for Tonight:**

**WEATHER:** Clear skies with areas of smoke.  
**TEMPERATURES:** Minimums 58 in lower drainages to 66 on ridges...little change.  
**HUMIDITY:** Poor to moderate humidity recoveries with maximum humidity 38% on ridges to 48% in lower drainages...5-10% wetter.  
**20-FOOT WINDS:**  
**RIDGES/EXPOSED CANYONS-** South-southwest 5 to 9 mph becoming southeast 3 to 5 mph by 2200.  
**CANYONS/VALLEYS-** Southwest 3 to 6 mph becoming downslope less than 5 mph by 2100.  
**INVERSION:** Light smoke will settle into drainages after 2200.

---

**OUTLOOK FOR SUNDAY:** Sunny with areas of smoke. Ridgetop winds South 6 to 12 mph with gusts up to 18 mph. Canyon/Valley winds: South 4 to 8 mph. Maximum temperatures 90-94. Minimum humidity 13-18%. Light-moderate smoke in drainages in the morning.

---

## **OBSERVATIONS FROM YESTERDAY:**

Chico RAWS at 230 ft.:  
0700: Temperature 62 degrees. Humidity 31%. Winds Northeast 2 mph with maximum gust 5 mph.  
1500: Temperature 96 degrees. Humidity 15%. Winds South 8 mph with maximum gust 12 mph.

---

# FIRE BEHAVIOR FORECAST

FORECAST NUMBER: 03

TYPE OF FIRE: Wild land

FIRE NAME: Humboldt

OPERATIONAL PERIOD: 6-14-08 0700-0700

DATE ISSUED: 6-13-08

TIME ISSUED: 1800

UNIT: Butte

SIGNED: 

Typed/printed: Andy Reiling FBAN (T)

## INPUTS

### WEATHER SUMMARY:

**Today:** Clear sunny skies, Maximum temperature 92-96° Minimum Relative Humidity 13-17%  
20' winds Ridges East/Southeast 2-5 mph in the morning, becoming Southwest 5-9mph Gust to 18mph  
Canyons and Valley Northwest 2-4 mph becoming southwest 3-6 mph after 1300 hours  
**Tonight:** Clear skies areas of smoke in the drainages, Minimum temperature 58-66° Maximum  
Relative Humidity 38-48%  
20' Winds: Ridges South-Southwest 5-9 mph becoming southeast 3-5 mph by 2200  
Canyon and Valley Southwest 3-6 mph becoming down slope less than 5mph by 2100.

## OUTPUTS

### FIRE BEHAVIOR

**GENERAL:** The fire is burning in several major drainages. Terrain is flat to vertical escarpments. The fire is burning in grass oak land with gray pine and heavy brush pockets. Fine dead fuels are at 4%. Dead and down fuels are at, or close to, record lows for this time of year. The brush is making sustained runs when there is a dead fuel loading combined with wind and/or slope. Probability of Ignition 87. Primary spread of the fire has been by torching and then spotting ahead of the main fire.

### Specific:

**West & South:** Is favorable for mop-up and holding. Interior islands may continue to burn out. Still have smokes near residences that could present a potential threat to the residence.

**Eastern Flank & Branch II:** The line held yesterday. The Southwest wind will blow smokes over the line in the afternoon. Be especially vigilant between 1600-1800 hours when conditions have reached there peak. Areas around residences and brush thickets will have the most potential to flare-up.

**Northern Flank & Branch I:** Interior islands will continue to burn out. Potential for flare-ups and hidden spots exist. Any developed smoke column has the potential to spot.

Optimal Forward Rates of Spread in the **oak wood and grass** will be 40-60 chains an hour with 7-9' flame lengths. Flanking fire Rate of Spread will be 4-5 chains per hour with flame lengths of 1-3'. Backing Rates of Spread will be 1-3 with 1-2' flame lengths. Spotting distances up to 1/3 of a mile.

Optimal forward rate of spread in **brush** will be 60-100 chains an hour with 20-25' flame lengths. Flanking fire spread will be 7-9 chains an hour with flame lengths of 6-8'. Backing fire rate of spread will be 2-4' chains per hour, with flame lengths of 3-5' spotting increases to 1/2 mile.

When the **grass is exposed** to the wind, forward rates of spread will be 80-140 chains an hour.

### AIR OPERATIONS:

Smoke will hang in the drainages as the winds decrease around sunrise. As winds pick-up, the smoke will clear and turbulence will increase. The southwestern end of the fire will have poor visibility until 0900. Power lines are in the fire area.

## SAFETY

**With the spotting potential , Know were the fire is at all times**

**Post looks outs, when you cannot see the fire.**

**Ensure everybody is aware of the location of the safety zone(s) and the escape routes.**

**Have more than one plan and have more than one escape route.**

# SAFETY MESSAGE

INCIDENT NAME  
**HUMBOLDT**  
CA BTU-7089

DATE PREPARED  
06-13-2008

TIME PREPARED  
2200

OPERATIONAL PERIOD June 14, 2008 0700 - 0700

**WHEN IT COMES TO SAFETY: THE ONLY THING WORSE  
THAN BEING OBLIVIOUS TO THE UNKNOWN IS IGNORING  
THE OBVIOUS...**

## L C E S

### *Be prepared for the wind shift today* **Fatigue is becoming a Hazard**

Power lines: Treat all power lines as if they were hot. Assume all conductors are energized. Although PG and E may have de-energized the electrical current, the line could be energized by an improperly installed generator or solar system.

If you encounter potentially unsafe situations contact your Division Supervisor who will make contact with PG and E. They will respond to assess the situation and make it safe.

Traffic: The potential for evacuations of the public and the traffic issues we will face can become a serious safety hazard for both us and the citizens we protect.

Extreme fire weather equals the potential for extreme fire behavior. Be prepared for flare ups and new starts.

Fatigue can become a safety issue for all of us. Be sure to utilize good work-rest cycles.

Use extreme caution near steep terrain and natural chimneys.

#### **JOIN THE HYDRATION NATION!!!! Have a drink on us...**

- **Brief your crews on all components of the IAP**
- **Continually monitor your crews for sign & symptoms of heat illness**
- **Insure your crews are well hydrated and are provide rest breaks**
- **Personal Monitoring:**
  - **Keep track of your urine output**
  - **Monitor your core temperature and pulse rate**
  - **Drink 8 ounces of water every 15 minutes**

Prepared By:

Approved By (Safety Officer, ICT #2)  
Incident Safety Officer, Scott Upton

INCIDENT ACTION PLAN SAFETY ANALYSIS										1. Incident Name		2. Date & Time Prepared		3. Operational Period			
										HUMBOLDT		6/13/08 1800		6/14/08 0700-0700			
LCES: Analysis of Tactical Applications Lookouts, Communications, Escape routes, Safety Zones										Other Risk Analysis							
Division/Group	Downhill Fireline	Underslung Fireline	Indirect Fireline	Mid-slope Fireline	Frontal Assault	Anchor Points	Extreme conditions Spotting, wind-driven	Unburned Area	Snags	500 KV Lines	LCES Mitigations	Hazard Materials	Transportation Thr+	Communications	Structure Protection	Multi-Aircraft	Other Risk Mitigations
A	X	X	X				X	X	X		Provide LCES; Use Fallers; Post Lookouts; PPE			X	X	X	Stay in communication with adjoining forces.
D				X			X	X	X		Provide LCES; Use Fallers; Post Lookouts; PPE			X	X	X	Stay in communication with adjoining forces.
J		X		X			X	X	X		Provide LCES; Use Fallers; Post Lookouts; PPE			X	X	X	Stay in communication with adjoining forces.
K		X		X			X	X	X		Provide LCES; Use Fallers; Post Lookouts; PPE			X	X	X	Stay in communication with adjoining forces.
L		X		X			X	X	X		Provide LCES; Use Fallers; Post Lookouts; PPE			X	X	X	Stay in communication with adjoining forces.
M								X	X	X	Provide LCES; Use Fallers; Post Lookouts; PPE			X			Stay in communication with adjoining forces.
N									X	X	Provide LCES; Use Fallers; Post Lookouts; PPE			X			Stay in communication with adjoining forces.
O							X	X	X	X	Provide LCES; Use Fallers; Post Lookouts; PPE			X	X	X	Stay in communication with adjoining forces.
T	X	X		X				X	X	X	Provide LCES; Use Fallers; Post Lookouts; PPE			X	X	X	Stay in communication with adjoining forces.
X	X	X		X				X	X	X	Provide LCES; Use Fallers; Post Lookouts; PPE			X			Stay in communication with adjoining forces.
Y																	
B	X	X	X	X	X		X	X	X	X	Provide LCES; Use Fallers; Post Lookouts; PPE			X	X	X	Stay in communication with adjoining forces.
Z	X	X		X				X	X	X	Provide LCES; Use Fallers; Post Lookouts; PPE						Stay in communication with adjoining forces.

Prepared by (Name and Position)

<b>DIVISION ASSIGNMENT LIST</b>			1. Branch <b>I</b>		2. Division/Group <b>A</b>		
3. Incident Name <b>HUMBOLDT</b>			4. Operational Period Date: <b>June 14, 2008</b> Time: <b>0700-0700</b>				
5. Operations Personnel							
Operations Chief		Jim Sweet/Jerry Burke (Day) Steve Emerick (Night)		Division/Group Supervisor		Richard Case	
Branch Director		Darrell Wolf		Air Attack Supervisor No.		Dave Junette/Randy Rapp	
6. Resources Assigned this Period							
Strike Team/Task Force/ Resource Designator		Leader		Number Persons	Trans. Needed	Drop Off PT./Time	Pick Up PT./Time
ST 2600-C		Jones		22		DP 18/0700	DP 18/0700
ST 3300-C		Hart		16		DP 18/0700	DP 18/0700
ST 4226-C				16		DP 18/0700	DP 18/0700
ST 9250-C						DP 18/0700	DP 18/0700
CRW Warm Springs		Holiday		20		DP 18/0700	DP 18/0700
CRW Lone Peak IH		Armantrout		18		DP 18/0700	DP 18/0700
CRW Plumas HS		Sevelson		36		DP 18/0700	DP 18/0700
CRW Zig Zag HS						DP 18/0700	DP 18/0700
ST 9128-L		McKay		5		DP 18/0700	DP 18/0700
ST 9225-L		Lee		6		DP 18/0700	DP 18/0700
ST 9338-L		Will		7		DP 18/0700	DP 18/0700
DOZ 2140				2		DP 18/0700	DP 18/0700
DOZ 2142				2		DP 18/0700	DP 18/0700
WT E-50						DP 18/0700	DP 18/0700
WT E-51						DP 18/0700	DP 18/0700
WT 61						DP 18/0700	DP 18/0700
WT 24						DP 18/0700	DP 18/0700
DOZB						DP 18/0700	DP 18/0700
FOBS						DP 18/0700	DP 18/0700
7. Control Operations Improve and hold line. Mop up and patrol.							
8. Special Instructions BRANCH I SOFR: Matt Streck							
9. Division/Group Communication Summary							
Function	Frequency	System	Channel	Function	Frequency	System	Channel
Command	RX 151.460 TX 159.390	King NIFC	CDF CMD 7 CHANNEL 2	Logistics	RX 154.220 TX 159.195	King NIFC	OES 2B CHANNEL 3
Tactical Div/Group	RX/TX 154.265	King NIFC	WHITE 2 CHANNEL 5	Air to Ground	RX/TX 151.2200	King NIFC	CDF A/G CHANNEL 13
Prepared by (Resource Unit Ldr.) LINDA GREEN/JEFF SCHIMKE			Approved by (Planning Sect. Ch.) SCOTT JALBERT			Date June 14, 2008	Time 0100



<b>DIVISION ASSIGNMENT LIST</b>			1. Branch <b>I</b>		2. Division/Group <b>B</b>		
3. Incident Name <b>HUMBOLDT</b>			4. Operational Period Date: <b>June 14, 2008</b> Time: <b>0700-0700</b>				
5. Operations Personnel							
Operations Chief		Jim Sweet/Jerry Burke (Day) Steve Emerick (Night)		Division/Group Supervisor		Steven Hollett	
Branch Director		Darrell Wolf		Air Attack Supervisor No.		Dave Junette/Randy Rapp	
6. Resources Assigned this Period							
Strike Team/Task Force/ Resource Designator		Leader		Number Persons	Trans. Needed	Drop Off PT./Time	Pick Up PT./Time
ST 4601-C				15		DP 16/0700	DP 16/0700
ST 9220-C		Higgins		16		DP 16/0700	DP 16/0700
ST 9260-C		Burns		16		<b>DP 17/0700</b>	<b>DP 17/0700</b>
CRW La Grande		Bush		20		<b>DP 17/0700</b>	<b>DP 17/0700</b>
CRW Black Mountain		James		21		<b>DP 17/0700</b>	<b>DP 17/0700</b>
CRW Idaho City		Cardoza		20		DP 16/0700	DP 16/0700
CRW Sawtooth		Cota		20		DP 16/0700	DP 16/0700
ST 9318-L		White		5		<b>DP 17/0700</b>	<b>DP 17/0700</b>
DOZ 2241		Bungarz		2		DP 16/0700	DP 16/0700
DOZ 2544		Vandergoot		2		DP 16/0700	DP 16/0700
WT E-212				2		<b>DP 17/0700</b>	<b>DP 17/0700</b>
WT E-214						<b>DP 17/0700</b>	<b>DP 17/0700</b>
WT Lenahans E-217		Hughes		2		DP 16/0700	DP 16/0700
WT Water Dog E-236		Epperson		2		DP 16/0700	DP 16/0700
SOFR		McNamara		1		DP 16/0700	DP 16/0700
FOBS						DP 16/0700	DP 16/0700
FALC		Vaughn				DP 16/0700	DP 16/0700
7. Control Operations Complete and hold line. Mop up and patrol.							
8. Special Instructions							
9. Division/Group Communication Summary							
Function	Frequency	System	Channel	Function	Frequency	System	Channel
Command	RX 151.460 TX 159.390	King NIFC	CDF CMD 7 CHANNEL 2	Logistics	RX 154.220 TX 159.195	King NIFC	OES 2B CHANNEL 3
Tactical Div/Group	RX/TX 151.385	King NIFC	CDF TAC 9 CHANNEL 4	Air to Ground	RX/TX 151.2200	King NIFC	CDF A/G CHANNEL 13
Prepared by (Resource Unit Ldr.) LINDA GREEN/JEFF SCHIMKE			Approved by (Planning Sect. Ch.) SCOTT JALBERT			Date June 14, 2008	Time 0100

<b>DIVISION ASSIGNMENT LIST</b>			1. Branch <b>I</b>		2. Division/Group <b>D</b>			
3. Incident Name <b>HUMBOLDT</b>			4. Operational Period Date: <b>June 14, 2008</b> Time: <b>0700-0700</b>					
5. Operations Personnel								
Operations Chief		Jim Sweet/Jerry Burke (Day) Steve Emerick (Night)		Division/Group Supervisor		Albert Savage		
Branch Director		Darrell Wolf		Air Attack Supervisor No.		Dave Junette/Randy Rapp		
6. Resources Assigned this Period								
Strike Team/Task Force/ Resource Designator		Leader		Number Persons	Trans. Needed	Drop Off PT./Time	Pick Up PT./Time	
ST 2800-A		Yates		20		DP 6/0700	DP 6/0700	
ST 3625-C						DP 6/0700	DP 6/0700	
ST 3675-C		McBath		16		DP 6/0700	DP 6/0700	
FOBS						DP 6/0700	DP 6/0700	
						DP 6/0700	DP 6/0700	
7. Control Operations Mop up around structures. Mop up and patrol the perimeter.								
8. Special Instructions								
9. Division/Group Communication Summary								
Function	Frequency	System	Channel	Function	Frequency	System	Channel	
Command	RX 151.460 TX 159.390	King NIFC	CDF CMD 7 CHANNEL 2	Logistics	RX 154.220 TX 159.195	King NIFC	OES 2B CHANNEL 3	
Tactical Div/Group	RX/TX 168.0500	King NIFC	NIFC TAC 1 CHANNEL 7	Air to Ground	RX/TX 151.2200	King NIFC	CDF A/G CHANNEL 13	
Prepared by (Resource Unit Ldr.) LINDA GREEN/JEFF SCHIMKE			Approved by (Planning Sect. Ch.) SCOTT JALBERT			Date June 14, 2008		Time 0100

<b>DIVISION ASSIGNMENT LIST</b>			1. Branch <b>II</b>		2. Division/Group <b>J</b>		
3. Incident Name <b>HUMBOLDT</b>			4. Operational Period Date: <b>June 14, 2008</b> Time: <b>0700-0700</b>				
5. Operations Personnel							
Operations Chief		Jim Sweet/Jerry Burke (Day) Steve Emerick (Night)		Division/Group Supervisor		Mike Shorrock	
Branch Director		Jack Lefort		Air Attack Supervisor No.		Dave Junette/Randy Rapp	
6. Resources Assigned this Period							
Strike Team/Task Force/ Resource Designator		Leader		Number Persons	Trans. Needed	Drop Off PT./Time	Pick Up PT./Time
ST 4225-C				16		DP 4/0700	DP 4/0700
ST 4276-C		Medich		16		DP 4/0700	DP 4/0700
ST 9110-C				16		<b>DP 14/0700</b>	<b>DP 14/0700</b>
ST 9221-G		Williams		35		DP 4/0700	DP 4/0700
ST 9243-G				32		DP 4/0700	DP 4/0700
ST 9261-G		Byers		32		<b>DP 14/0700</b>	<b>DP 14/0700</b>
ST 9472-G		Billing		34		<b>DP 14/0700</b>	<b>DP 14/0700</b>
ST 9260-L		Rush		4		<b>DP 14/0700</b>	<b>DP 14/0700</b>
WT Hill Constr. E-43		Fields		2		DP 4/0700	DP 4/0700
WT McCurdy E-46						DP 4/0700	DP 4/0700
WT R&R E-52		Hodgeson		2		<b>DP 14/0700</b>	<b>DP 14/0700</b>
WT E-220				2		<b>DP 14/0700</b>	<b>DP 14/0700</b>
SOFR						DP 4/0700	DP 4/0700
FOBS						DP 4/0700	DP 4/0700
						DP 4/0700	DP 4/0700
7. Control Operations Construct and improve line. Mop up around structures. Mop up and patrol.							
8. Special Instructions							
9. Division/Group Communication Summary							
Function		Frequency		System		Channel	
Command		RX 151.460 TX 159.390		King NIFC		CDF CMD 7 CHANNEL 2	
Tactical Div/Group		RX/TX 168.6000		King NIFC		NIFC TAC 3 CHANNEL 8	
						Logistics	
						RX 154.220 TX 159.195	
						King NIFC	
						OES 2B CHANNEL 3	
						Air to Ground	
						RX/TX 151.2200	
						King NIFC	
						CDF A/G CHANNEL 13	
Prepared by (Resource Unit Ldr.) LINDA GREEN/JEFF SCHIMKE				Approved by (Planning Sect. Ch.) SCOTT JALBERT			
				Date June 14, 2008		Time 0100	

<b>DIVISION ASSIGNMENT LIST</b>			1. Branch <b>III</b>		2. Division/Group <b>X/Y/Z</b>			
3. Incident Name <b>HUMBOLDT</b>			4. Operational Period Date: <b>June 14, 2008</b> Time: <b>0700-0700</b>					
5. Operations Personnel								
Operations Chief		Jim Sweet/Jerry Burke (Day) Steve Emerick (Night)		Division/Group Supervisor		Christopher Post/Krishan Timberlake (T)		
Branch Director				Air Attack Supervisor No.		Dave Junette/Randy Rapp		
6. Resources Assigned this Period								
Strike Team/Task Force/ Resource Designator	Leader		Number Persons	Trans. Needed	Drop Off PT./Time		Pick Up PT./Time	
ST 4015-C					DP 8/0700		DP 8/0700	
ST 4106-C					<b>DP 11/0700</b>		<b>DP 11/0700</b>	
ST 9227-G	Pindel		27		DP 8/0700		DP 8/0700	
ST 9242-G	Lange		31		<b>DP 11/0700</b>		<b>DP 11/0700</b>	
FOBS	Johnson		1		DP 8/0700		DP 8/0700	
7. Control Operations Build and hold line. Mop up and patrol.								
8. Special Instructions								
9. Division/Group Communication Summary								
Function	Frequency	System	Channel	Function	Frequency	System	Channel	
Command	RX 151.460 TX 159.390	King NIFC	CDF CMD 7 CHANNEL 2	Logistics	RX 154.220 TX 159.195	King NIFC	OES 2B CHANNEL 3	
Tactical Div/Group	RX/TX 166.7250	King NIFC	NIFC TAC 5 CHANNEL 10	Air to Ground	RX/TX 151.2200	King NIFC	CDF A/G CHANNEL 13	
Prepared by (Resource Unit Ldr.) LINDA GREEN/JEFF SCHIMKE			Approved by (Planning Sect. Ch.) SCOTT JALBERT			Date June 14, 2008		Time 0100

<b>DIVISION ASSIGNMENT LIST</b>			1. Branch <b>IV</b>		2. Division/Group <b>K</b>		
3. Incident Name <b>HUMBOLDT</b>			4. Operational Period Date: <b>June 14, 2008</b> Time: <b>0700-0700</b>				
5. Operations Personnel							
Operations Chief		Jim Sweet/Jerry Burke (Day) Steve Emerick (Night)		Division/Group Supervisor		Lynn Duncan	
Branch Director		Bill Roberts		Air Attack Supervisor No.		Dave Junette/Randy Rapp	
6. Resources Assigned this Period							
Strike Team/Task Force/ Resource Designator	Leader	Number Persons	Trans. Needed	Drop Off PT./Time	Pick Up PT./Time		
ST 3660-C	Simmon	26		DP 12/0700	DP 12/0700		
ST 4075-C	Planje	16		DP 12/0700	DP 12/0700		
CRW NDF Wells 1	Harding	30		DP 12/0700	DP 12/0700		
CRW NDF Carlin 1	Harding	33		DP 12/0700	DP 12/0700		
ST 9250-L	Smith	5		DP 12/0700	DP 12/0700		
BTU WT-27		2		DP 12/0700	DP 12/0700		
WT Jackson E-212	Jackson	1		DP 12/0700	DP 12/0700		
WT McGarr E-241	McGarr	2		DP 12/0700	DP 12/0700		
FOBS	Rodriguez	1		DP 12/0700	DP 12/0700		
7. Control Operations Wildland Urban Interface firefighting operations. Build and hold line.							
8. Special Instructions							
9. Division/Group Communication Summary							
Function	Frequency	System	Channel	Function	Frequency	System	Channel
Command	RX 151.460 TX 159.390	King NIFC	CDF CMD 7 CHANNEL 2	Logistics	RX 154.220 TX 159.195	King NIFC	OES 2B CHANNEL 3
Tactical Div/Group	RX/TX 164.1375	King NIFC	NIFC TAC 4 CHANNEL 9	Air to Ground	RX/TX 151.2200	King NIFC	CDF A/G CHANNEL 13
Prepared by (Resource Unit Ldr.) LINDA GREEN/JEFF SCHIMKE		Approved by (Planning Sect. Ch.) SCOTT JALBERT		Date June 14, 2008		Time 0100	

<b>DIVISION ASSIGNMENT LIST</b>			1. Branch <b>IV</b>		2. Division/Group <b>L/M</b>		
3. Incident Name <b>HUMBOLDT</b>			4. Operational Period Date: <b>June 14, 2008</b> Time: <b>0700-0700</b>				
5. Operations Personnel							
Operations Chief		Jim Sweet/Jerry Burke (Day) Steve Emerick (Night)		Division/Group Supervisor		Blankenheim	
Branch Director		Bill Roberts		Air Attack Supervisor No.		Dave Junette/Randy Rapp	
6. Resources Assigned this Period							
Strike Team/Task Force/ Resource Designator	Leader		Number Persons	Trans. Needed	Drop Off PT./Time		Pick Up PT./Time
ST 3025-C	Winters		16		DP 1/0700		DP 1/0700
ST 9210-C	DeLong		21		DP 1/0700		DP 1/0700
ST 9230-C	Hernandez		15		<b>DP 19/0700</b>		<b>DP 19/0700</b>
ST 9260-C	Burns		16		<b>DP 19/0700</b>		<b>DP 19/0700</b>
ST 9222-G	Walker		33		DP 1/0700		DP 1/0700
ST 9274-G	Neal		37		<b>DP 19/0700</b>		<b>DP 19/0700</b>
WT Outback E-44			2		DP 1/0700		DP 1/0700
WT Mehringer E-48	Mehringer		2		<b>DP 19/0700</b>		<b>DP 19/0700</b>
WT Turner E-240	Turner		1		<b>DP 19/0700</b>		<b>DP 19/0700</b>
FOBS	Brock		1		<b>DP 19/0700</b>		<b>DP 19/0700</b>
7. Control Operations Wildland Urban Interface firefighting operations. Build and hold line.							
8. Special Instructions							
9. Division/Group Communication Summary							
Function	Frequency	System	Channel	Function	Frequency	System	Channel
Command	RX 151.460 TX 159.390	King NIFC	CDF CMD 7 CHANNEL 2	Logistics	RX 154.220 TX 159.195	King NIFC	OES 2B CHANNEL 3
Tactical Div/Group	RX/TX 164.1375	King NIFC	NIFC TAC 4 CHANNEL 9	Air to Ground	RX/TX 151.2200	King NIFC	CDF A/G CHANNEL 13
Prepared by (Resource Unit Ldr.) LINDA GREEN/JEFF SCHIMKE			Approved by (Planning Sect. Ch.) SCOTT JALBERT		Date June 14, 2008		Time 0100

<b>DIVISION ASSIGNMENT LIST</b>			1. Branch <b>IV</b>		2. Division/Group <b>N/O/T</b>		
3. Incident Name <b>HUMBOLDT</b>			4. Operational Period Date: <b>June 14, 2008</b> Time: <b>0700-0700</b>				
5. Operations Personnel							
Operations Chief		Jim Sweet/Jerry Burke (Day) Steve Emerick (Night)		Division/Group Supervisor		Scott Wood	
Branch Director		Jack Lefort		Air Attack Supervisor No.		Dave Junette/Randy Rapp	
6. Resources Assigned this Period							
Strike Team/Task Force/ Resource Designator		Leader		Number Persons	Trans. Needed	Drop Off PT./Time	Pick Up PT./Time
ST 3801-A		Bauer		21		DP 5/0700	DP 5/0700
ST 5002-B		Despain		18		DP 5/0700	DP 5/0700
ST 5003-B				20		<b>DP 2/0700</b>	<b>DP 2/0700</b>
ST 4026-C		Brizzi		16		DP 5/0700	DP 5/0700
ST 9111-G		Orme		34		DP 5/0700	DP 5/0700
ST 9223-G		Smith		35		<b>DP 2/0700</b>	<b>DP 2/0700</b>
WT Leach E-50		Leach		2		DP 5/0700	DP 5/0700
WT Johnson E-232		Westman		2		<b>DP 2/0700</b>	<b>DP 2/0700</b>
FOBS		Witt		1		DP 5/0700	DP 5/0700
7. Control Operations Mop up around structures. Improve and hold line.							
8. Special Instructions							
9. Division/Group Communication Summary							
Function	Frequency	System	Channel	Function	Frequency	System	Channel
Command	RX 151.460 TX 159.390	King NIFC	CDF CMD 7 CHANNEL 2	Logistics	RX 154.220 TX 159.195	King NIFC	OES 2B CHANNEL 3
Tactical Div/Group	RX/TX 154.295	King NIFC	WHITE 3 CHANNEL 6	Air to Ground	RX/TX 151.2200	King NIFC	CDF A/G CHANNEL 13
Prepared by (Resource Unit Ldr.) LINDA GREEN/JEFF SCHIMKE			Approved by (Planning Sect. Ch.) SCOTT JALBERT			Date June 14, 2008	Time 0100

<b>DIVISION ASSIGNMENT LIST</b>			1. Structure Branch <b>PARADISE</b>		2. Group <b>NEAL</b>		
3. Incident Name <b>HUMBOLDT</b>			4. Operational Period Date: <b>June 14, 2008</b> Time: <b>0700-0700</b>				
5. Operations Personnel							
Operations Chief		Jim Sweet/Jerry Burke (Day) Steve Emerick (Night)		Division/Group Supervisor		Tony Brownell	
Branch Director		Rob Cone		Air Attack Supervisor No.		Dave Junette/Randy Rapp	
6. Resources Assigned this Period							
Strike Team/Task Force/ Resource Designator		Leader		Number Persons	Trans. Needed	Drop Off PT./Time	Pick Up PT./Time
ST 3800-A		Bachmeyer		21			
ST 3150-B		Nichols		16			
ST 3250-B							
FOBS							
7. Control Operations Mop up and patrol around structures. Prepare and protect structures as needed.							
8. Special Instructions							
9. Division/Group Communication Summary							
Function	Frequency	System	Channel	Function	Frequency	System	Channel
Command	RX 151.460 TX 159.390	King NIFC	CDF CMD 7 CHANNEL 2	Logistics	RX 154.220 TX 159.195	King NIFC	OES 2B CHANNEL 3
Tactical Div/Group	RX/TX 166.7750	King NIFC	NIFC TAC 6 CHANNEL 12	Air to Ground	RX/TX 151.2200	King NIFC	CDF A/G CHANNEL 13
Prepared by (Resource Unit Ldr.) LINDA GREEN/JEFF SCHIMKE			Approved by (Planning Sect. Ch.) SCOTT JALBERT			Date June 14, 2008	Time 0100



<b>DIVISION ASSIGNMENT LIST</b>		1. Structure Branch <b>PARADISE</b>		2. Group <b>ROUND VALLEY</b>			
3. Incident Name <b>HUMBOLDT</b>		4. Operational Period Date: <b>June 14, 2008</b> Time: <b>0700-0700</b>					
5. Operations Personnel							
Operations Chief		Jim Sweet/Jerry Burke (Day) Steve Emerick (Night)		Division/Group Supervisor David Petrinovich			
Branch Director		Rob Cone		Air Attack Supervisor No. Dave Junette/Randy Rapp			
6. Resources Assigned this Period							
Strike Team/Task Force/ Resource Designator	Leader	Number Persons	Trans. Needed	Drop Off PT./Time	Pick Up PT./Time		
ST 2025-A	Parrott	22					
ST 2801-A	Piccinini	22					
ST 3201-B	Austin	16					
WT E-213							
FOBS							
7. Control Operations Mop and patrol around structures. Prepare and protect structures as needed.							
8. Special Instructions Bowling Alley located on Clark Road							
9. Division/Group Communication Summary							
Function	Frequency	System	Channel	Function	Frequency	System	Channel
Command	RX 151.460 TX 159.390	King NIFC	CDF CMD 7 CHANNEL 2	Logistics	RX 154.220 TX 159.195	King NIFC	OES 2B CHANNEL 3
Tactical Div/Group	RX/TX 166.7750	King NIFC	NIFC TAC 6 CHANNEL 12	Air to Ground	RX/TX 151.2200	King NIFC	CDF A/G CHANNEL 13
Prepared by (Resource Unit Ldr.) LINDA GREEN/JEFF SCHIMKE		Approved by (Planning Sect. Ch.) SCOTT JALBERT		Date June 14, 2008		Time 0100	

<b>DIVISION ASSIGNMENT LIST</b>			1. Structure Branch <b>PARADISE</b>		2. Group <b>WAYLAND</b>			
3. Incident Name <b>HUMBOLDT</b>			4. Operational Period Date: <b>June 14, 2008</b> Time: <b>0700-0700</b>					
5. Operations Personnel								
Operations Chief		Jim Sweet/Jerry Burke (Day) Steve Emerick (Night)		Division/Group Supervisor		Chris Haile		
Branch Director		Rob Cone		Air Attack Supervisor No.		Dave Junette/Randy Rapp		
6. Resources Assigned this Period								
Strike Team/Task Force/ Resource Designator		Leader		Number Persons	Trans. Needed	Drop Off PT./Time	Pick Up PT./Time	
ST 2002-A		Silva		21				
ST 4227-A								
ST 6821-A		Heller		21				
BTU WT 42				2				
BTU WT 45		Holman		2				
FOBS								
7. Control Operations Mop and patrol around structures. Protect and prepare as needed.								
8. Special Instructions								
9. Division/Group Communication Summary								
Function	Frequency	System	Channel	Function	Frequency	System	Channel	
Command	RX 151.460 TX 159.390	King NIFC	CDF CMD 7 CHANNEL 2	Logistics	RX 154.220 TX 159.195	King NIFC	OES 2B CHANNEL 3	
Tactical Div/Group	RX/TX 166.7750	King NIFC	NIFC TAC 6 CHANNEL 12	Air to Ground	RX/TX 151.2200	King NIFC	CDF A/G CHANNEL 13	
Prepared by (Resource Unit Ldr.) LINDA GREEN/JEFF SCHIMKE			Approved by (Planning Sect. Ch.) SCOTT JALBERT			Date June 14, 2008		Time 0100

<b>DIVISION ASSIGNMENT LIST</b>			1. Structure Branch <b>PARADISE</b>		2. Group <b>WILDER</b>			
3. Incident Name <b>HUMBOLDT</b>			4. Operational Period Date: <b>June 14, 2008</b> Time: <b>0700-0700</b>					
5. Operations Personnel								
Operations Chief		Jim Sweet/Jerry Burke (Day) Steve Emerick (Night)		Division/Group Supervisor		John Arrigoni		
Branch Director		Rob Cone		Air Attack Supervisor No.		Dave Junette/Randy Rapp		
6. Resources Assigned this Period								
Strike Team/Task Force/ Resource Designator		Leader		Number Persons	Trans. Needed	Drop Off PT./Time	Pick Up PT./Time	
ST 2201-A		Sorensen		19				
WT Barstow E-229		Braun		2				
FOBS								
7. Control Operations Mop and patrol around structures. Protect and prepare as needed.								
8. Special Instructions								
9. Division/Group Communication Summary								
Function	Frequency	System	Channel	Function	Frequency	System	Channel	
Command	RX 151.460 TX 159.390	King NIFC	CDF CMD 7 CHANNEL 2	Logistics	RX 154.220 TX 159.195	King NIFC	OES 2B CHANNEL 3	
Tactical Div/Group	RX/TX 166.7750	King NIFC	NIFC TAC 6 CHANNEL 12	Air to Ground	RX/TX 151.2200	King NIFC	CDF A/G CHANNEL 13	
Prepared by (Resource Unit Ldr.) LINDA GREEN/JEFF SCHIMKE			Approved by (Planning Sect. Ch.) SCOTT JALBERT			Date June 14, 2008		Time 0100

<b>DIVISION ASSIGNMENT LIST</b>			1. Structure Branch <b>PARADISE</b>		2. Group <b>CENTERVILLE</b>			
3. Incident Name <b>HUMBOLDT</b>			4. Operational Period Date: <b>June 14, 2008</b> Time: <b>0700-0700</b>					
5. Operations Personnel								
Operations Chief		Jim Sweet/Jerry Burke (Day) Steve Emerick (Night)		Division/Group Supervisor		TJ Welch		
Branch Director		Rob Cone		Air Attack Supervisor No.		Dave Junette/Randy Rapp		
6. Resources Assigned this Period								
Strike Team/Task Force/ Resource Designator		Leader		Number Persons	Trans. Needed	Drop Off PT./Time	Pick Up PT./Time	
ST 4152-A		Wiedenhoeft		22				
ST 4800-A		Michelini		20				
ST 5125-A		Akers		17				
ST 5177-A		Binaski		14				
ST 6110-A		Hall		21				
WT Norcal E-218		Strieff		2				
WT Mason E-251		Mason		2				
WT Womack E-239		Raye		3				
FOBS								
7. Control Operations Mop and patrol around structures. Protect and prepare as needed.								
8. Special Instructions								
9. Division/Group Communication Summary								
Function	Frequency	System	Channel	Function	Frequency	System	Channel	
Command	RX 151.460 TX 159.390	King NIFC	CDF CMD 7 CHANNEL 2	Logistics	RX 154.220 TX 159.195	King NIFC	OES 2B CHANNEL 3	
Tactical Div/Group	RX/TX 166.7750	King NIFC	NIFC TAC 6 CHANNEL 12	Air to Ground	RX/TX 151.2200	King NIFC	CDF A/G CHANNEL 13	
Prepared by (Resource Unit Ldr.) LINDA GREEN/JEFF SCHIMKE			Approved by (Planning Sect. Ch.) SCOTT JALBERT			Date June 14, 2008		Time 0100

<b>DIVISION ASSIGNMENT LIST</b>			1. Branch		2. Division/Group <b>SILVER STAGING</b>		
3. Incident Name <b>HUMBOLDT</b>			4. Operational Period Date: <b>June 14, 2008</b> Time: <b>0700-0700</b>				
5. Operations Personnel							
Operations Chief		Jim Sweet/Jerry Burke (Day) Steve Emerick (Night)		Staging Area Manager		Travis Bowersox	
Branch Director				Air Attack Supervisor No.		Dave Junette/Randy Rapp	
6. Resources Assigned this Period							
Strike Team/Task Force/ Resource Designator	Leader	Number Persons	Trans. Needed	Drop Off PT./Time	Pick Up PT./Time		
ST 6226-C	Roddy	20		Silver Dollar FG	Silver Dollar FG		
DOZ Jones E-196	Jones	1		Silver Dollar FG	Silver Dollar FG		
DOZ Sherrick E-198	Sherrick	1		Silver Dollar FG	Silver Dollar FG		
WT Verle E-223	Verle	2		Silver Dollar FG	Silver Dollar FG		
7. Control Operations Maintain 3 minute availability. Monitor Command Frequency.							
8. Special Instructions							
9. Division/Group Communication Summary							
Function	Frequency	System	Channel	Function	Frequency	System	Channel
Command	RX 151.460 TX 159.390	King NIFC	CDF CMD 7 CHANNEL 2	Logistics	RX 154.220 TX 159.195	King NIFC	OES 2B CHANNEL 3
Tactical Div/Group		King NIFC		Air to Ground	RX/TX 151.2200	King NIFC	CDF A/G CHANNEL 13
Prepared by (Resource Unit Ldr.) LINDA GREEN/JEFF SCHIMKE		Approved by (Planning Sect. Ch.) SCOTT JALBERT		Date June 14, 2008		Time 0100	

<b>DIVISION ASSIGNMENT LIST</b>			1. Branch		2. Division/Group <b>COLLEGE STAGING</b>		
3. Incident Name <b>HUMBOLDT</b>			4. Operational Period Date: <b>June 14, 2008</b> Time: <b>0700-0700</b>				
5. Operations Personnel							
Operations Chief		Jim Sweet/Jerry Burke (Day) Steve Emerick (Night)		Staging Area Manager		Tuan Flower	
Branch Director				Air Attack Supervisor No.		Dave Junette/Randy Rapp	
6. Resources Assigned this Period							
Strike Team/Task Force/ Resource Designator	Leader		Number Persons	Trans. Needed	Drop Off PT./Time		Pick Up PT./Time
ST 2801-A					Butte College		Butte College
DOZ Caldwell E-206	Spoon		2		Butte College		Butte College
DOZ Holt E-308	Holt		2		Butte College		Butte College
WT Johnson E-230	Hoskins		2		Butte College		Butte College
7. Control Operations Maintain 3 minute availability. Monitor Command Frequency.							
8. Special Instructions							
9. Division/Group Communication Summary							
Function	Frequency	System	Channel	Function	Frequency	System	Channel
Command	RX 151.460 TX 159.390	King NIFC	CDF CMD 7 CHANNEL 2	Logistics	RX 154.220 TX 159.195	King NIFC	OES 2B CHANNEL 3
Tactical Div/Group		King NIFC		Air to Ground	RX/TX 151.2200	King NIFC	CDF A/G CHANNEL 13
Prepared by (Resource Unit Ldr.) LINDA GREEN/JEFF SCHIMKE			Approved by (Planning Sect. Ch.) SCOTT JALBERT		Date June 14, 2008		Time 0100

<b>DIVISION ASSIGNMENT LIST</b>			1. Branch		2. Division/Group <b>PARADISE STAGING</b>		
3. Incident Name <b>HUMBOLDT</b>			4. Operational Period Date: <b>June 14, 2008</b> Time: <b>0700-0700</b>				
5. Operations Personnel							
Operations Chief		Jim Sweet/Jerry Burke (Day) Steve Emerick (Night)		Staging Area Manager		Nick Bautista	
Branch Director				Air Attack Supervisor No.		Dave Junette/Randy Rapp	
6. Resources Assigned this Period							
Strike Team/Task Force/ Resource Designator	Leader		Number Persons	Trans. Needed	Drop Off PT./Time		Pick Up PT./Time
ST 4802-A	Wycoff		21		Paradise HS		Paradise HS
DOZ NEU245 E-202	Ward		1		Paradise HS		Paradise HS
DOZ Camilinci E-209	Roberts		2		Paradise HS		Paradise HS
WT Rochlitz E-49					Paradise HS		Paradise HS
7. Control Operations Maintain 3 minute availability. Monitor Command Frequency.							
8. Special Instructions							
9. Division/Group Communication Summary							
Function	Frequency	System	Channel	Function	Frequency	System	Channel
Command	RX 151.460 TX 159.390	King NIFC	CDF CMD 7 CHANNEL 2	Logistics	RX 154.220 TX 159.195	King NIFC	OES 2B CHANNEL 3
Tactical Div/Group		King NIFC		Air to Ground	RX/TX 151.2200	King NIFC	CDF A/G CHANNEL 13
Prepared by (Resource Unit Ldr.) LINDA GREEN/JEFF SCHIMKE		Approved by (Planning Sect. Ch.) SCOTT JALBERT		Date June 14, 2008		Time 0100	

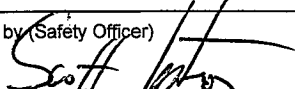
<b>DIVISION ASSIGNMENT LIST</b>			1. Branch		2. Division/Group <b>FIRELINE SUPPRESSION REPAIR</b>		
3. Incident Name <b>HUMBOLDT</b>			4. Operational Period Date: <b>June 14, 2008</b> Time: <b>0700-0700</b>				
5. Operations Personnel							
Operations Chief		Jim Sweet/Jerry Burke (Day) Steve Emerick (Night)		Division/Group Supervisor		Ruth Norman	
Branch Director				Air Attack Supervisor No.		Dave Junette/Randy Rapp	
6. Resources Assigned this Period							
Strike Team/Task Force/ Resource Designator	Leader		Number Persons	Trans. Needed	Drop Off PT./Time		Pick Up PT./Time
DOZ Green Valley E-307	Morgan		2		ICP/0800		ICP/0800
DOZ Wet Pup E-323	Hodgetts		1		ICP/0800		ICP/0800
WT Alans E-215	Wharff		2		ICP/0800		ICP/0800
WT Allens E-216	Palacios		1		ICP/0800		ICP/0800
DOZB	Grimm				ICP/8000		ICP/0800
7. Control Operations Maintain 3 minute availability. Monitor Command Frequency.							
8. Special Instructions Check in and out with the Division Group Supervisor as you move through the divisions. Use the Tactical Frequency of the division you are working in.							
9. Division/Group Communication Summary							
Function	Frequency	System	Channel	Function	Frequency	System	Channel
Command	RX 151.460 TX 159.390	King NIFC	CDF CMD 7 CHANNEL 2	Logistics	RX 154.220 TX 159.195	King NIFC	OES 2B CHANNEL 3
Tactical Div/Group		King NIFC		Air to Ground	RX/TX 151.2200	King NIFC	CDF A/G CHANNEL 13
Prepared by (Resource Unit Ldr.) LINDA GREEN/JEFF SCHIMKE		Approved by (Planning Sect. Ch.) SCOTT JALBERT			Date June 14, 2008		Time 0100



INCIDENT RADIO COMMUNICATIONS PLAN		Incident Name HUMBOLDT		Date/Time Prepared 6/13 2100		Operational Period Date/Time 6/14/08 0700 to 0700					
Ch #	Function	Channel Name/Trunked Radio System Talkgroup	Assignment	RX Freq	N or W	RX Tone/NAC	TX Freq	N or W	Tx Tone/NAC	Mode A, D or M	Remarks
1		CDF C1		151.355		W	159.300	3	3	A	Emergency Backup Only
2	Command	CDF C7	All Divisions	151.460		W	159.390	2	2	A	
3	Command	OES 2B	Incident Base	154.220		W	159.195	3	3	A	Tone 3 - Incident Support
4	Tactical	CDF T9	Div B	151.385		W	151.385			A	
5	Tactical	White 2	Div A	154.265		W	154.265			A	
6	Tactical	White 3	Div. O, N, & T	154.295		W	154.295			A	
7	Tactical	NIFC Tac 1	Div. D	168.0500		N	168.0500			A	
8	Tactical	NIFC Tac 3	Div. J	168.6000		N	168.6000			A	
9	Tactical	NIFC Tac 4	Div. K, L, & M	164.1375		N	164.1375			A	
10	Tactical	NIFC Tac 5	Div. X, Y & Z	166.7250		N	166.7250			A	
11	Calcord	Calcord	All Divisions	156.075		W	156.075			A	Medical
12	Tactical	NIFC Tac 6	Paradise	166.7750		N	166.7750			A	Paradise Structure Branch
13	CDF A/G	CDF A/G	All Divisions	151.2200	N	N	151.2200	N		A	Aircraft Hailing
14	Air Guard	Air Guard	All Divisions	168.6250	N	N	168.6250	N	110.9	A	Aircraft Emergency Hailing
15	CalCord	Medical Tactical	All Divisions	156.075		W	156.075			A	All Medical Traffic
16	Air Guard	Air Guard	All Divisions	168.6250	N	N	168.6250	N	110.9	A	Aircraft Emergency Hailing

Prepared by (Communications Unit)  
 Brian D. Kornegay, COM1  
 Incident Location Chico, CA  
 County BTU State CA Latitude Longitude N Longitude W

The convention calls for frequency lists to show four digits after the decimal place, followed by either an "N" or a "W", depending on whether the frequency is narrow or wide band. Mode refers to either "A" or "D" indicating analog or digital (e.g. Project 25) or "M" indicating mixed mode. All channels are shown as if programmed in a control station, mobile or portable radio. Repeater and base stations must be programmed with the Rx and Tx reversed.

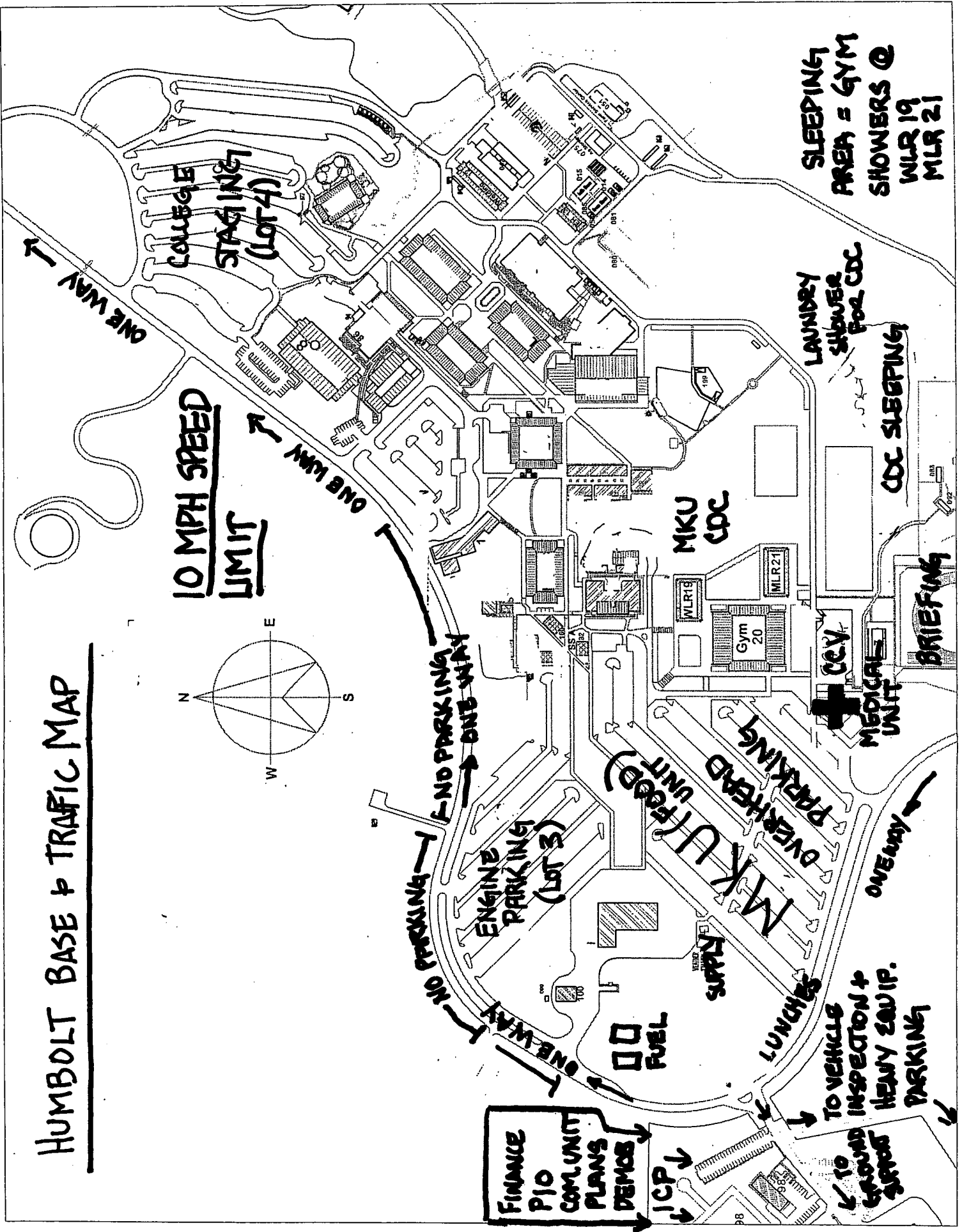
<b>MEDICAL PLAN</b>	1. Incident Name	2. Date Prepared	3. Time Prepared	4. Operational Period			
	Humboldt	6/13/08	1500	6/14/08 0700-0700 Hrs.			
<b>5. Incident Medical Aid Station</b>							
Medical Aid Stations		Location			Paramedics		
MERT CCC		Butte College Inc. Base Phone # (530) 310-1457			Yes	No	
						X	
<b>6. Transportation</b>							
<b>A. Ambulance Services</b>							
Name		Address		Phone		Paramedics	
First Responder Medics		333 Huss Rd. #100, Chico		911/ BTU ECC		Yes	No
Enloe Medics		1531 Esplanade, Chico		911/ BTU ECC		X	
<b>B. Incident Ambulances</b>							
Name		Location			Paramedics		
Enloe Flight Care		1531 Esplanade, Chico			Yes	No	
First Responder Medics		Butte College Inc. Base			X		
<b>7. Hospitals</b>							
Name	Address	Travel Time		Phone	Helipad		Burn Center
		Air	Ground		Yes	No	
Enloe Hospital	1531 Esplanade, Chico	5	15	911/ BTU ECC	X		X
Oroville Medical Center	2767 Olive Highway, Oroville	5	15	911/ BTU ECC	X		X
Feather River Hospital	5974 Pentz Rd. Paradise	5	15	911/ BTU ECC	X		X
UC Davis Hospital	2315 Stockton Blvd. Sacramento	30		(916) 734-3636			X
<b>8. Medical Emergency Procedures</b>							
<ul style="list-style-type: none"> <li>- Report all serious injuries to your division supervisor on command net.</li> <li>- Request Air or Ground transportation</li> <li>- Give location (address, GPS), type of injury, and resource needs.</li> <li>- The Safety Officer will be notified</li> <li>- Significant events (i.e. major injury, death, missing person) requires immediate notification to the IC and PIO.</li> </ul>							
Prepared by (Medical Unit Leader)				10. Reviewed by (Safety Officer)			
Grayson Magana							

# AIR OPERATIONS SUMMARY

**ICS 220**

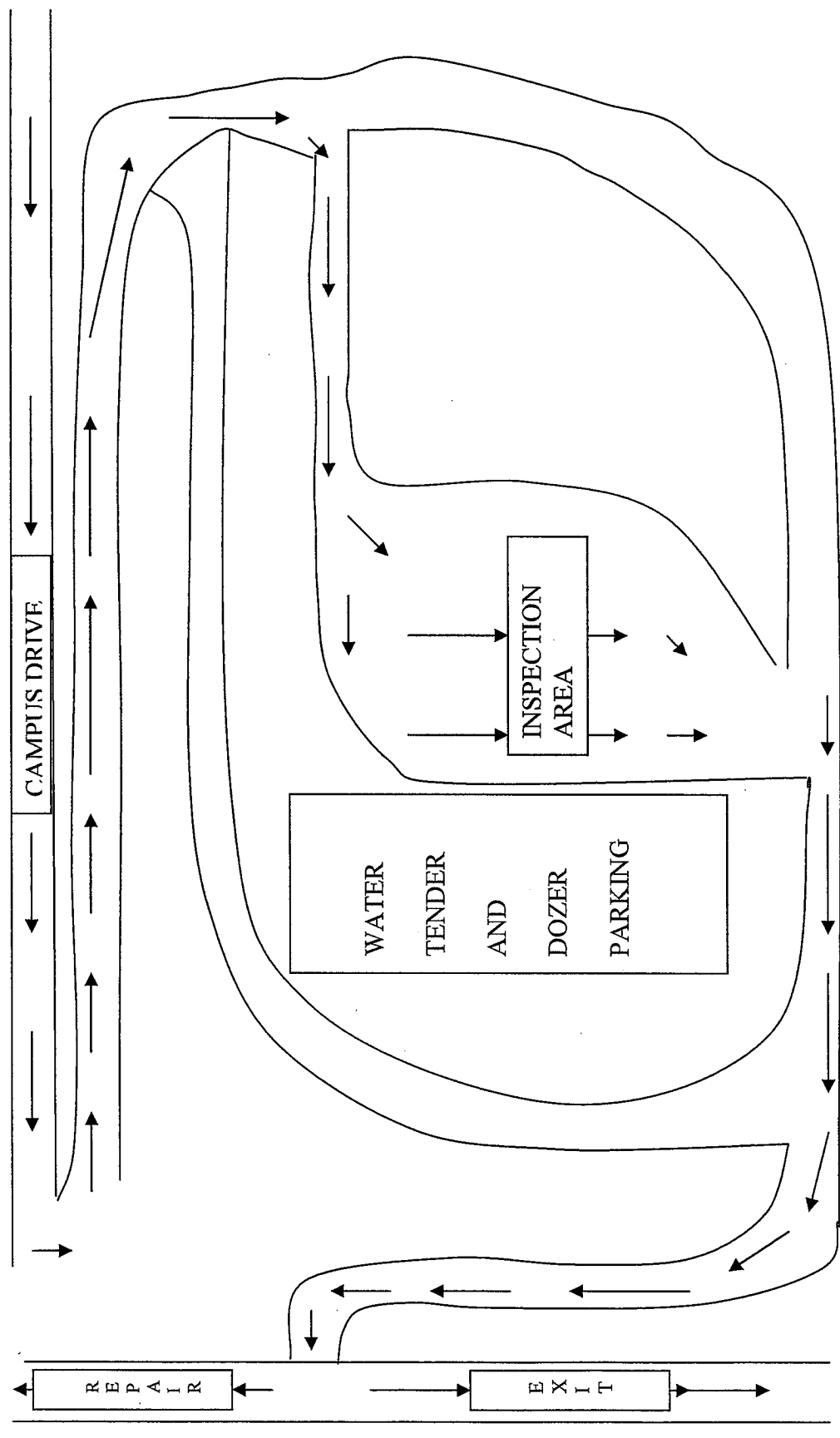
1. INCIDENT NAME: HUMBOLDT		2. OPERATIONAL PERIOD									
DATE: 6/14/08		TIME: 0700-2100	SUNRISE:	SUNSET:							
PERSONNEL & COMMUNICATIONS	NAME	AIR/AIR FREQUENCY	AIR/GROUND FREQUENCY	COMMAND HELIBASE DECK	5. REMARKS (Specific Instructions, Safety Notes, Hazards, Priorities)						
AIR OPERATIONS DIRECTOR	Dave Junette	151.2875	151.220		<ul style="list-style-type: none"> <li>• Powerlines in the Area!</li> <li>• Request Aircraft through Branch.</li> <li>• Contact Aircraft on A/G then switch</li> <li>• TFR 7 miles 7,000 feet                             <ul style="list-style-type: none"> <li>39°43.66</li> <li>121°41.94</li> </ul> </li> <li>• TOLC: 122.975</li> <li>• Deck: 163.100</li> </ul>						
ASGS	Randy Rapp										
HEBM:											
AIR TANKER COORDINATOR		FW 123.025									
AIR ATTACK SUPERVISOR											
HELICOPTER COORDINATOR	Sjolund	RW 129.775									
7. LOCATION/ FUNCTION		8. FIXED WING		9. ROTOR WING		10. TIME		AIRCRAFT ASSIGNED		OPERATING BASE	
		NO.	TYPE	NO.	TYPE	AVAILABLE	COMMENCE				
										82NW 216PJ	Chico
Medivac/Shorthaul				2	I	0800					
Helco / Recon				3	II	0800					
National Guard				3	III	0800					
				1	I	0930					
				1	I	0900					
				2	II	0900					
				1	I	1000					
				3	II	0830					
				2	I	0900					
Air Tactical		1									
Lead Plane		1									
13. TOTALS		10		10							
14. AIR OPERATIONS SUPPORT EQUIPMENT:										DATE: 06/13/2008	TIME: 2100
15. PREPARED BY: Dave Junette											

# HUMBOLT BASE & TRAFFIC MAP



TO  
EQUIPMENT  
REPAIR

VEHICLE INSPECTION TRAVEL ROUTE



EXIT TO  
WILLIAMS  
ROAD



# ***TRAINING SPECIALIST MESSAGE***

**A Training Specialist is on the incident.  
All federal, state, and local government agency  
trainees working on position task books will need to  
register with the Incident Training Specialist in order  
to receive proper credit for your assignment.  
The TNSP desk is in the ICP - and is located adjacent  
to Check-In.**

***Please see the Training Specialist as soon as possible!!***

***THANK YOU***

***Tom Reaves***

***Training Specialist***

Information Center Cal-Fire Butte	538-7826	
Logistics: Dawn Pederson	707-599-6554	
Facility: Remy Hancock	530-524-6129	
Situation Unit	530-899-2867	
	530-899-2996	
Plans	530-345-5294/CHECK-IN	
Helge Eng	916-616-0192	SITL
Ordering	530-343-2156	
Check-In	415-250-1327	
Training Spec	530-894-2461	
Motel	530-524-4909	
PIO	530-342-3089	
	530-342-5168	
Liaison	530-342-3168	
Time Unit	530-342-3258	
	530-342-5320	
Ground Support	530-894-8209	
Danny Sykes Cell	530-949-7084	
Butte S.O.	530-518-6030	
Humboldt Comm	530-342-5648	
	530-343-1557	
	530-343-3963	
Comm Unit Leader Cell	707-489-3233	
(Brian Kornegay)		
Comp/Claims	650-740-6450	
(John Owens)		
MERT	530-310-1457	
Supply (Mike)	530-342-3175	or 650-245-0170 CELL
F-Ban (Andy Reiling)	530-949-7719	
Law	530-342-4970	or 343-4491



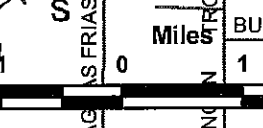
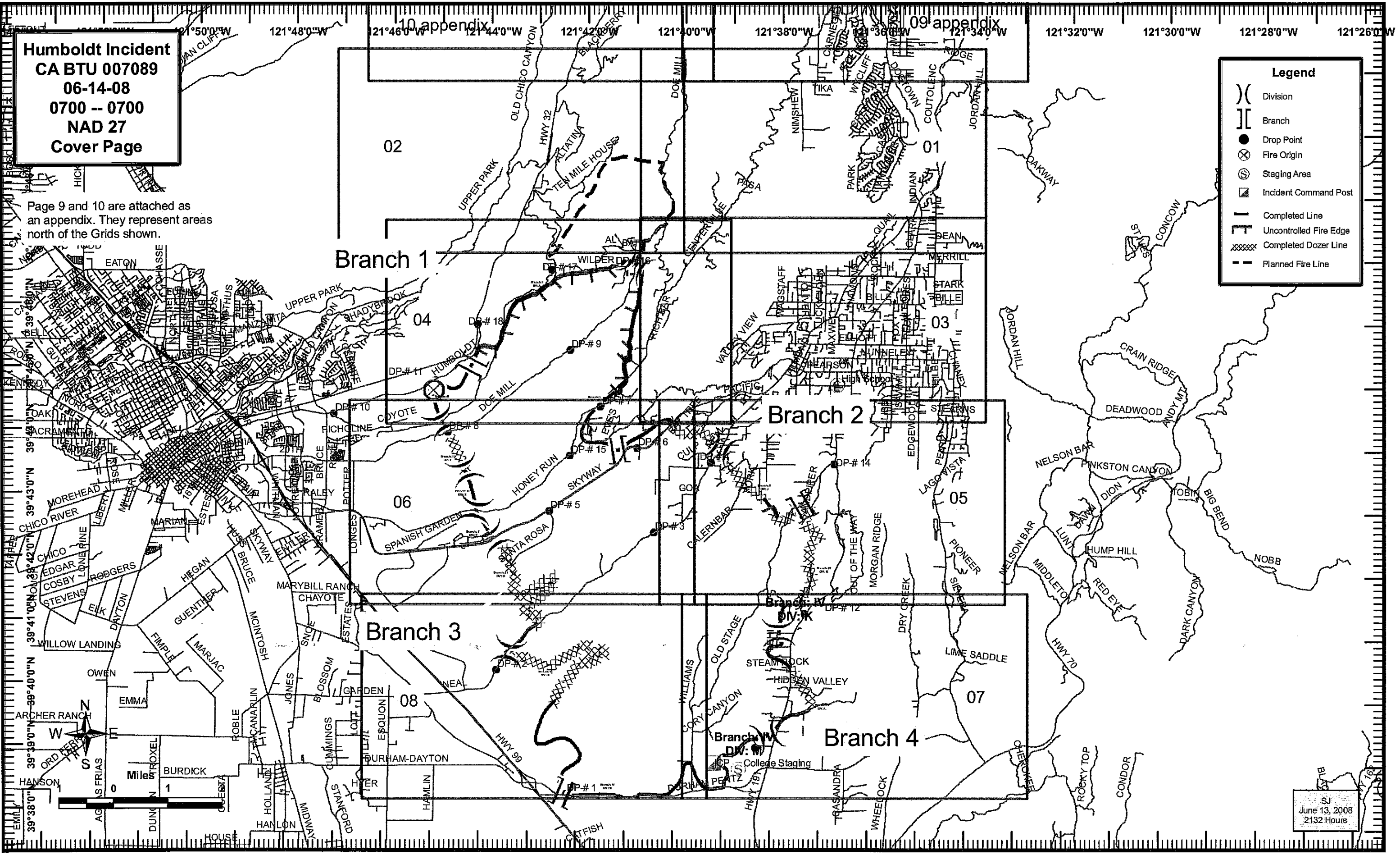


**Humboldt Incident**  
**CA BTU 007089**  
**06-14-08**  
**0700 -- 0700**  
**NAD 27**  
**Cover Page**

Page 9 and 10 are attached as an appendix. They represent areas north of the Grids shown.

**Legend**

- ( ) Division
- [ ] Branch
- Drop Point
- ⊗ Fire Origin
- ⊙ Staging Area
- Incident Command Post
- Completed Line
- Uncontrolled Fire Edge
- XXXXX Completed Dozer Line
- - - Planned Fire Line



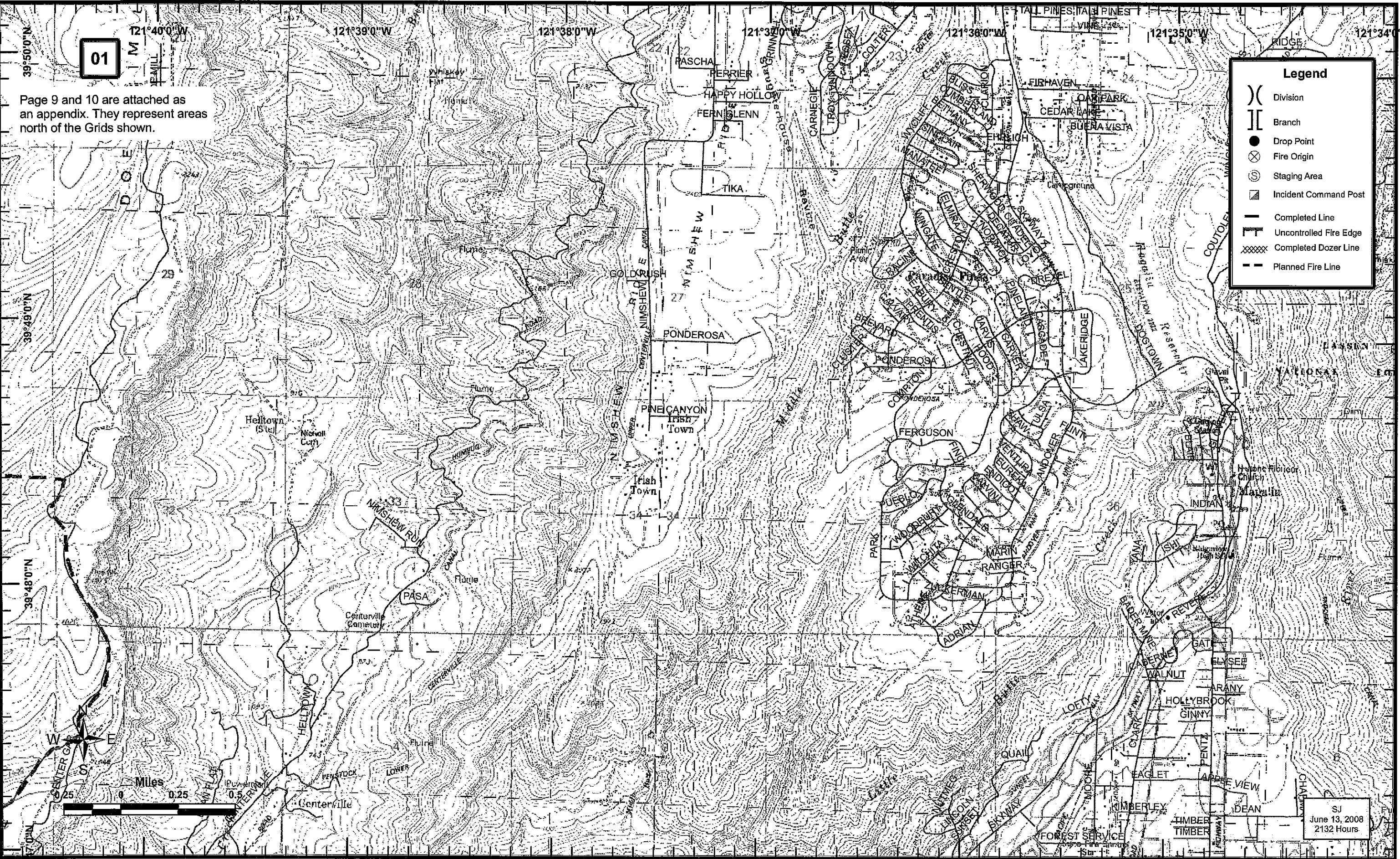
SJ  
 June 13, 2008  
 2132 Hours

01

Page 9 and 10 are attached as an appendix. They represent areas north of the Grids shown.

**Legend**

- ( ) Division
- || Branch
- Drop Point
- ⊗ Fire Origin
- ⊙ Staging Area
- ▣ Incident Command Post
- Completed Line
- Uncontrolled Fire Edge
- XXXXX Completed Dozer Line
- - - Planned Fire Line



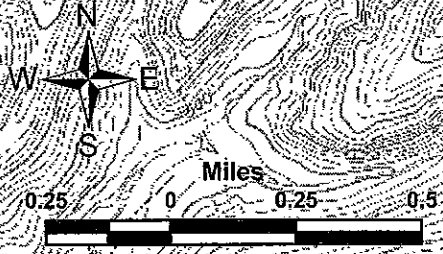
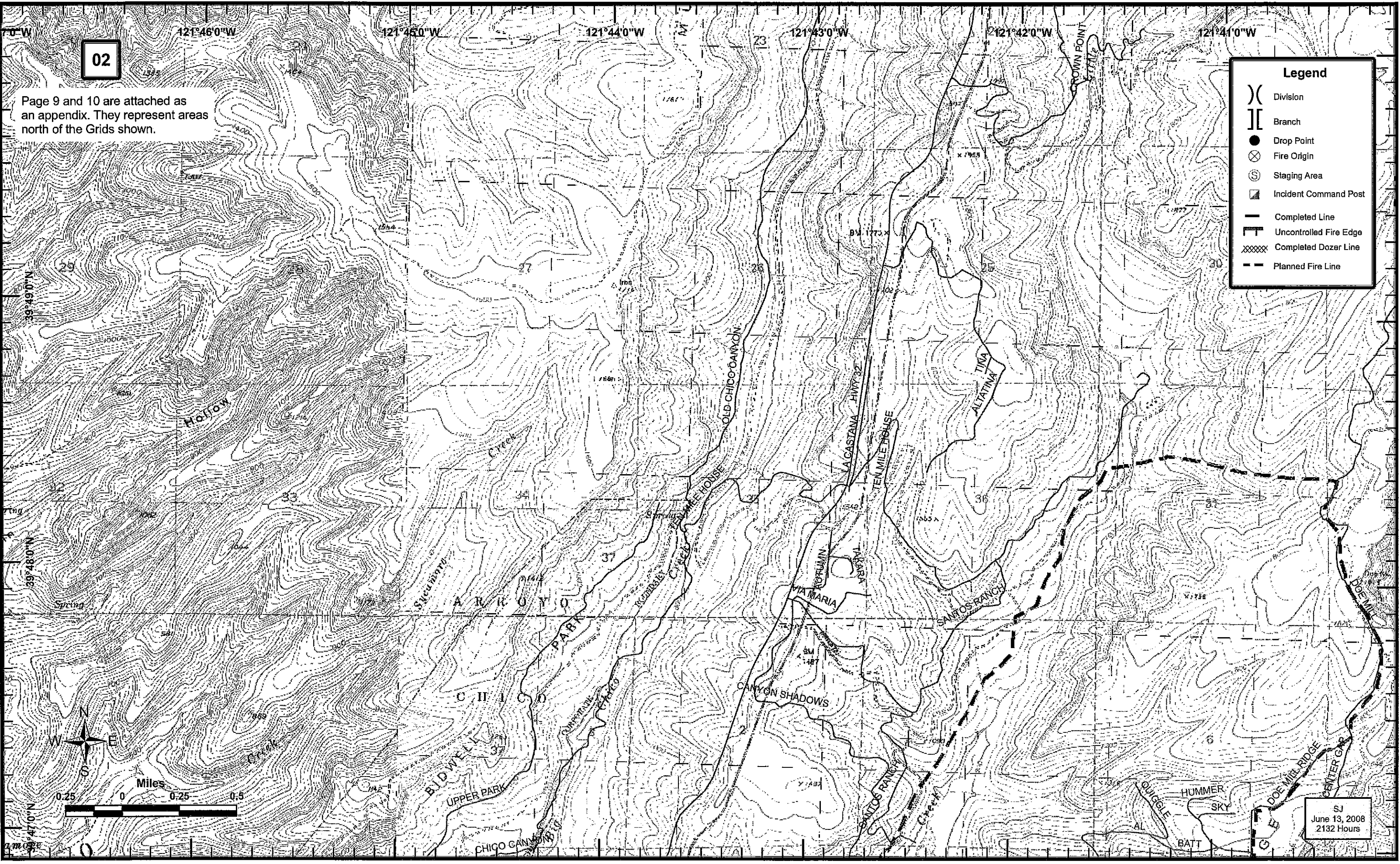
SJ  
June 13, 2008  
2132 Hours



Page 9 and 10 are attached as an appendix. They represent areas north of the Grids shown.

**Legend**

- ( ) Division
- [ ] Branch
- Drop Point
- ⊗ Fire Origin
- ⊙ Staging Area
- ▣ Incident Command Post
- Completed Line
- ┌┐ Uncontrolled Fire Edge
- XXXXX Completed Dozer Line
- - - Planned Fire Line



SJ  
June 13, 2008  
2132 Hours

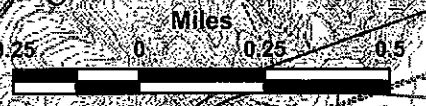
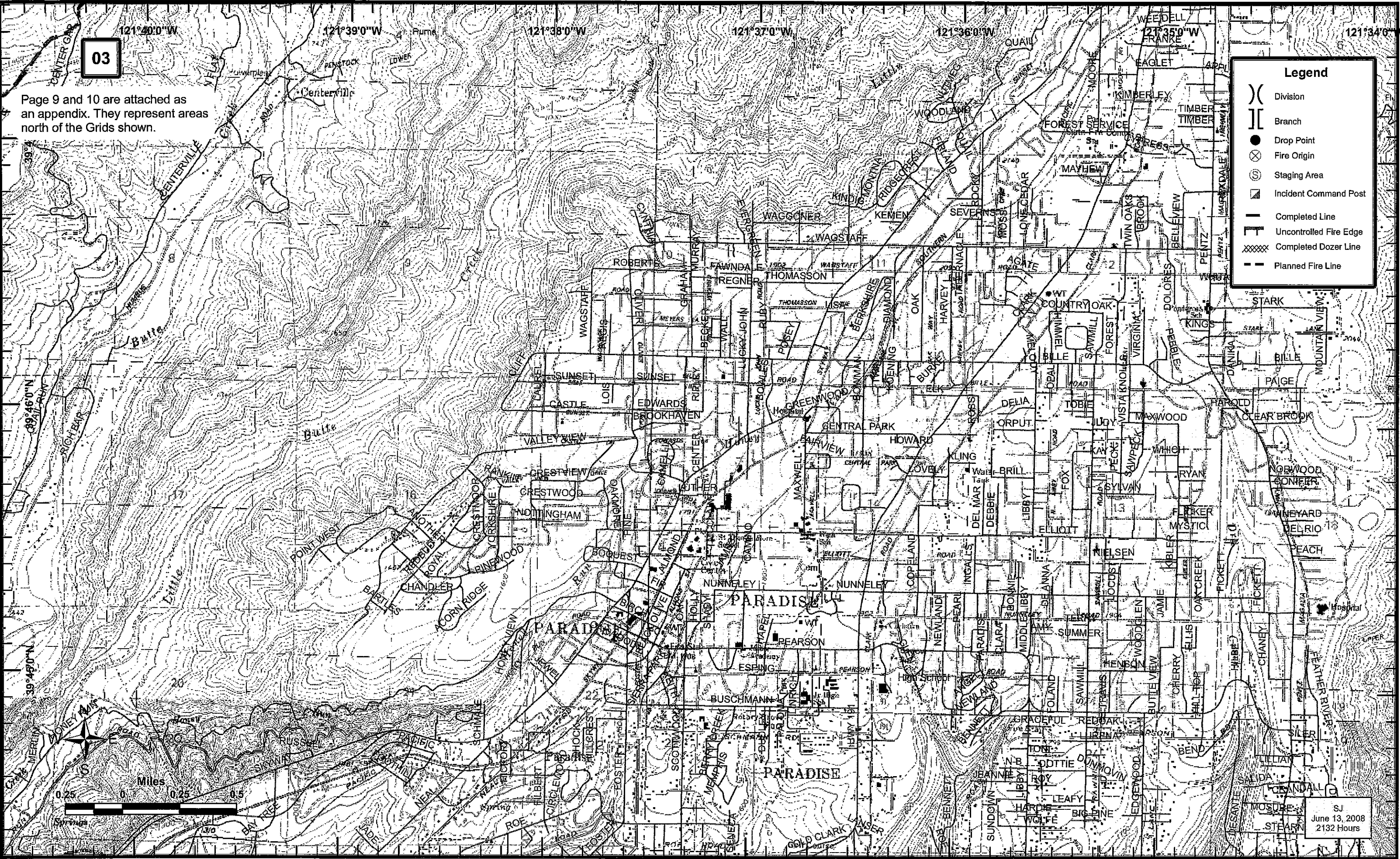


03

Page 9 and 10 are attached as an appendix. They represent areas north of the Grids shown.

**Legend**

- (X) Division
- (||) Branch
- Drop Point
- ⊗ Fire Origin
- ⊙ Staging Area
- ▣ Incident Command Post
- Completed Line
- - - Uncontrolled Fire Edge
- XXXXX Completed Dozer Line
- - - Planned Fire Line



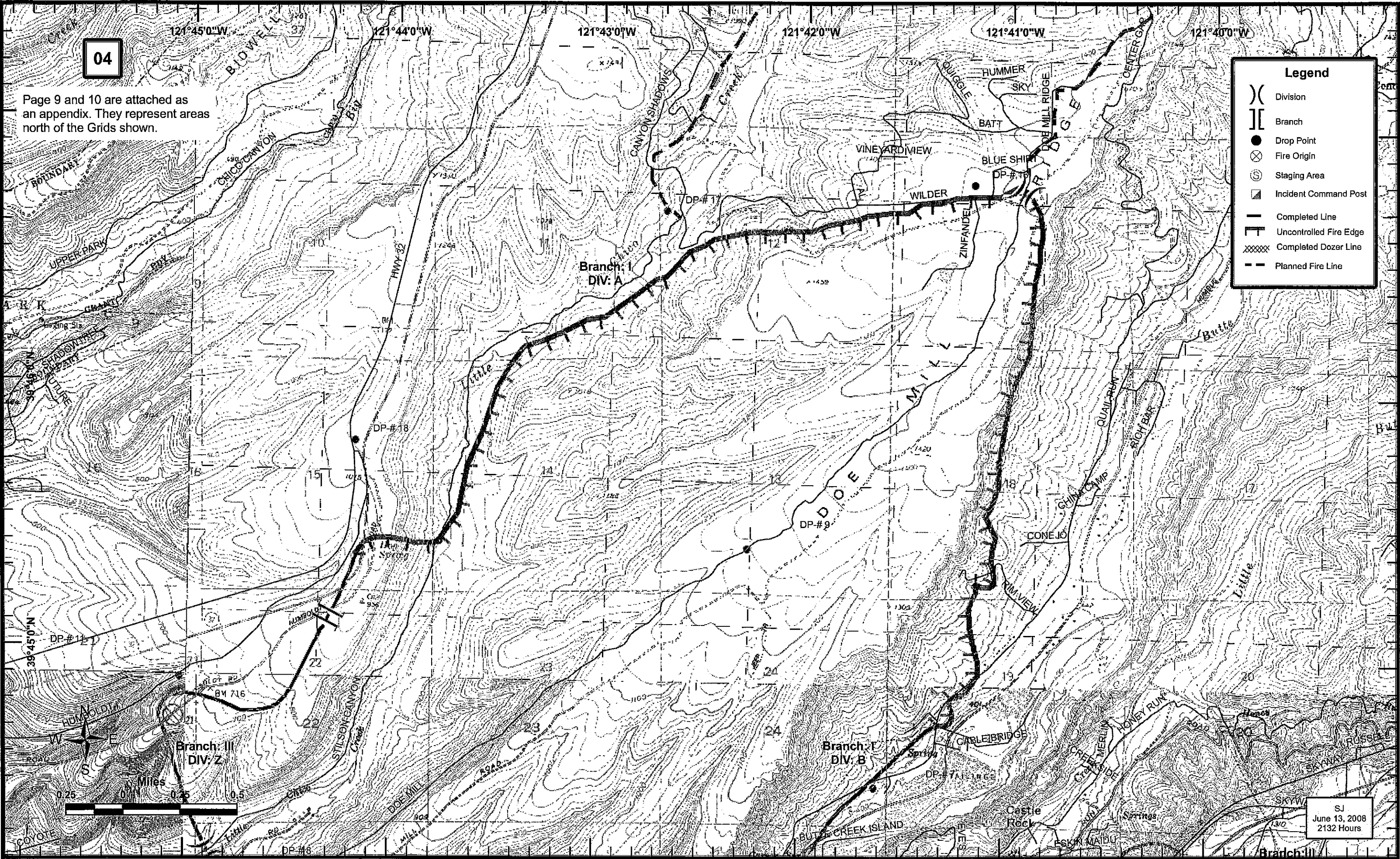
SJ  
June 13, 2008  
2132 Hours



Page 9 and 10 are attached as an appendix. They represent areas north of the Grids shown.

**Legend**

- (X) Division
- [ ] Branch
- Drop Point
- ⊗ Fire Origin
- ⊙ Staging Area
- ⊠ Incident Command Post
- Completed Line
- ⊣ Uncontrolled Fire Edge
- ⊞ Completed Dozer Line
- - - Planned Fire Line



SJ  
 June 13, 2008  
 2132 Hours



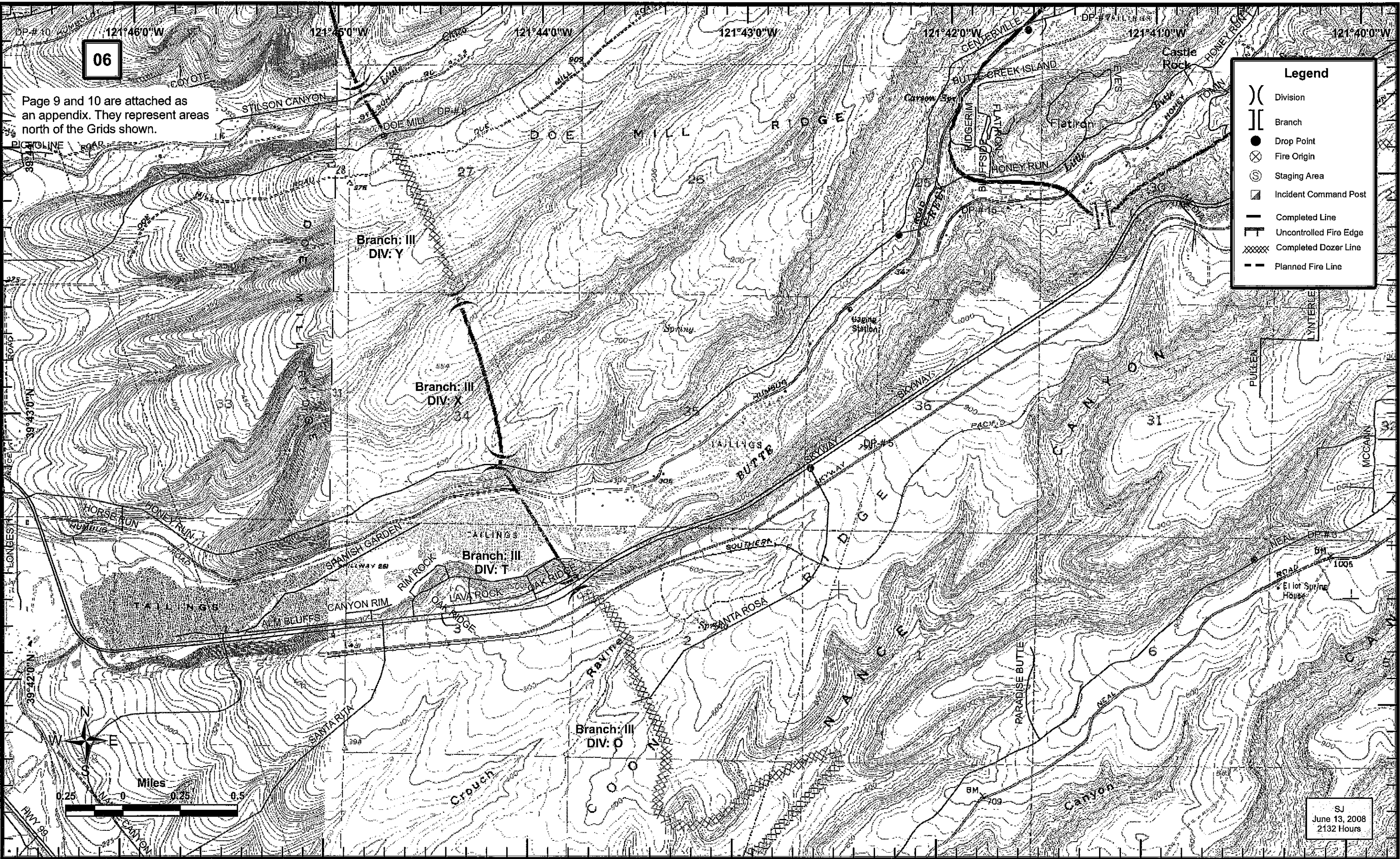




Page 9 and 10 are attached as an appendix. They represent areas north of the Grids shown.

**Legend**

- ( ) Division
- || Branch
- Drop Point
- ⊗ Fire Origin
- ⊙ Staging Area
- ⊠ Incident Command Post
- Completed Line
- ⊣ Uncontrolled Fire Edge
- ⊗ Completed Dozer Line
- - - Planned Fire Line

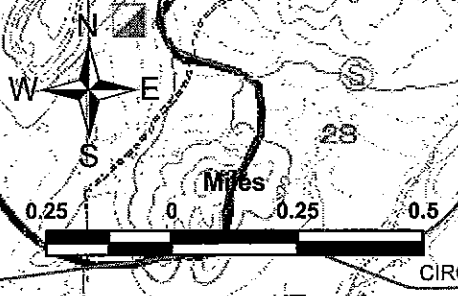
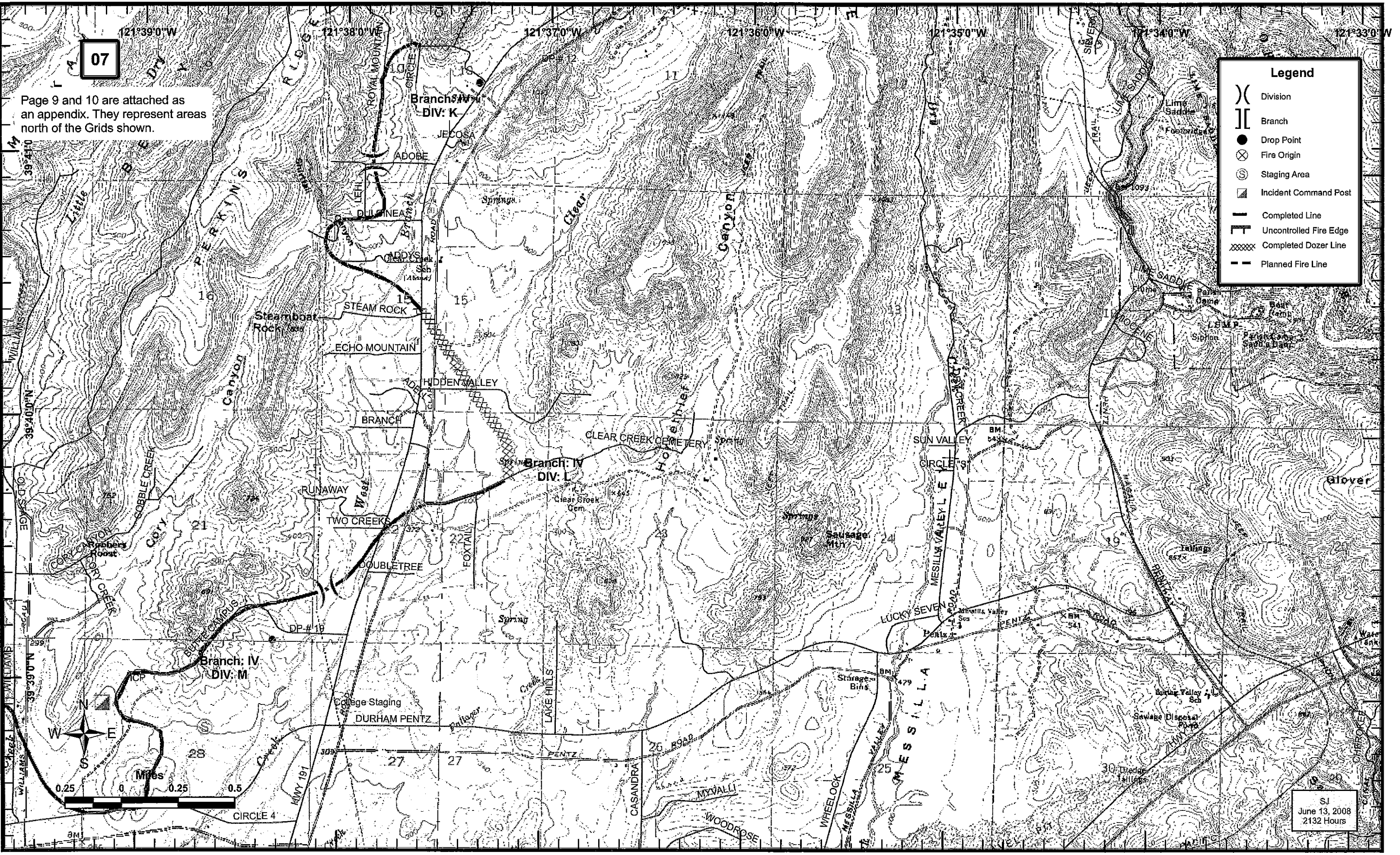




Page 9 and 10 are attached as an appendix. They represent areas north of the Grids shown.

**Legend**

- (X) Division
- || Branch
- Drop Point
- ⊗ Fire Origin
- ⊙ Staging Area
- ⊠ Incident Command Post
- Completed Line
- ⊣ Uncontrolled Fire Edge
- ⊞ Completed Dozer Line
- - - Planned Fire Line



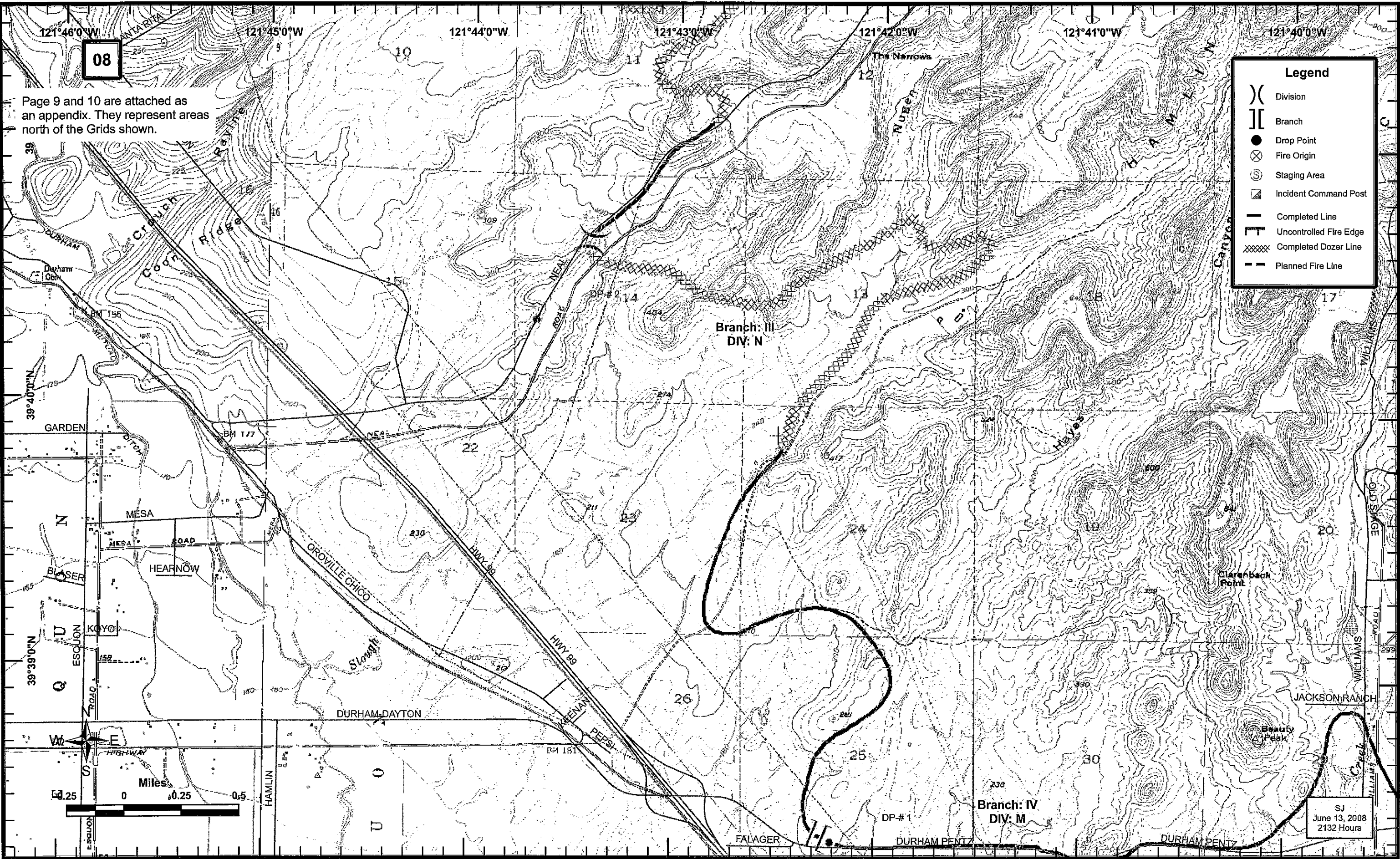


08

Page 9 and 10 are attached as an appendix. They represent areas north of the Grids shown.

**Legend**

- (X) Division
- [ ] Branch
- Drop Point
- ⊗ Fire Origin
- Ⓢ Staging Area
- ⊠ Incident Command Post
- Completed Line
- ⊣ Uncontrolled Fire Edge
- ⊞ Completed Dozer Line
- - - Planned Fire Line



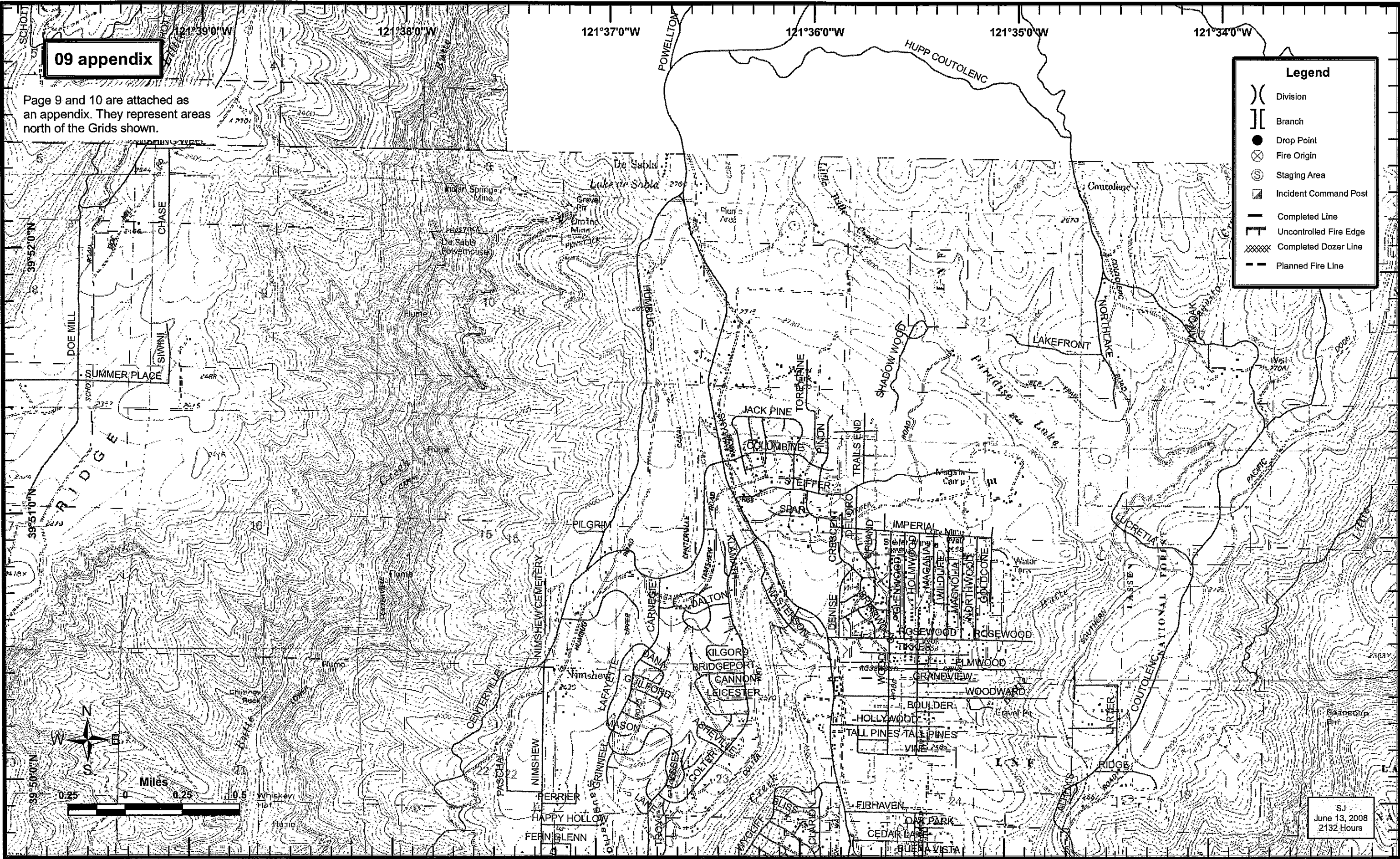
SJ  
June 13, 2008  
2132 Hours

**09 appendix**

Page 9 and 10 are attached as an appendix. They represent areas north of the Grids shown.

**Legend**

- ( ) Division
- | | Branch
- Drop Point
- ⊗ Fire Origin
- ⊙ Staging Area
- ▣ Incident Command Post
- Completed Line
- ┌ Uncontrolled Fire Edge
- ▨ Completed Dozer Line
- - - Planned Fire Line



SJ  
June 13, 2008  
2132 Hours



