

HUMBOLDT FIRE

CA-BTU-7089



Incident Action Plan

6-15-2008

0700-0700

ORGANIZATION ASSIGNMENT LIST

1. Incident Name	
HUMBOLDT	
2. Date	3. Time
6-14-2008	1900-Hours
4. Operational Period	
0700-0700	
Position	Name
5. Incident Commander and Staff	
Incident Commander	Bob Wallen/Mike Howe (T)/Ron Myers (T)
Deputy	Mark Reina
Safety Officer	Scott Upton / Dave Munch
Information Officer	Kevin Colburn / Janet Upton
Liaison Officer	Jeff Terpstra
6. Agency Representative	
Agency	Name
Butte Co. OES	Steve Weston
Butte Co SO	Sgt. Al Smith
CHP	Scott Gillingwater
Cal OES	Dan Tinnel
PG&E	Brad Boyes
Butte Co DPW	Mike Crump
7. Planning Section	
Chief	Scott Jalbert
Deputy	Dan Hall / Terrie Ridenhour(T)
Resources Unit	Jeff Schimke / Linda Green
Situation Unit	Helge Eng / Paul Medeiros
Documentation Unit	
Demobilization Unit	Karie Tidwell
Technical Specialists	
Human Resources	
Training	Tom Reaves
Fban	Andy Reiling
GIS Tech	Monty Messenger
Hired Equip	Jason Morris
meteorologist	Chris Jordan
8. Logistics Section	
Chief	Kim Price / Dawn Pedersen (T)
Deputy	
Supply Unit	Scott Ernest
Facilities Unit	Remy Hancock
Ground Support Unit	Danny Sykes
Communications Unit	Brian Konegay
Medical Unit	Grayson Magana
Motel	Jeffrey Burrows
Ordering	Adam Matos

9. Operations Section	
Chief	Day Ops Jim Sweet / Night Ops Steve Emerick
Deputy	Jerry Burke
a. Branch I- Division/Groups	
Branch Director	Pat Bally
Deputy	
Division/Group	A John Messina
Division/Group	B Brian Alderman
b. Branch II - Division/Groups	
Branch Director	Mike Brown
Deputy	
Division/Group	D / J Chad Porter
Division/Group	
c. Branch III - Division/Groups	
Branch Director	
Deputy	
Division/Group	N/O/T Sean Norman
Division/Group	X/Y/Z Matt Damon
d. Branch IV - Division/Groups	
Branch Director	Jeff Harter
Division	K Tim Henry
Division	L/M Troy Adamson
Division	
e. Branch V-Division/Groups	
Branch Director	
College Staging	Travis Bowersox
Fireline Sup Repair	Ken Kendrick
f. Air Operations Branch	
Air Operations Branch Director	David Junnette
Air Attack Supervisor	
Air Support Supervisor	Randy Rapp
Helicopter Coordinator	
Air Tanker Coordinator	
10. Finance Section	
Chief	Vance Moulton
Deputy	
Time Unit	Denise Ehnat
Procurement Unit	Michael Borelli
Compensation/Claims Unit	John Owens
Cost Unit	Phil Anso
Prepared by (Resource Unit Leader)	
Terrie Ridenhour (PSC-T) <i>Terrie Ridenhour</i>	

FIRE BEHAVIOR FORECAST

FORECAST NUMBER: 04

TYPE OF FIRE: Wild land

FIRE NAME: Humboldt

OPERATIONAL PERIOD: 6-15-08 0700-0700

DATE ISSUED: 6-14-08

TIME ISSUED: 1800

UNIT: Butte

SIGNED: 

Typed/printed: Andy Reiling FBAN (T)

INPUTS

WEATHER SUMMARY:

Today: Clear sunny skies, Maximum temperature 90-94° Minimum Relative Humidity 16-21%

20' winds Ridges East/Southeast 2-5 mph in the morning, becoming Southwest 6-9 mph gust to 16mph

Canyons and Valley Down slope 2-4 mph becoming southwest 3-6 mph after 1200 hours

Tonight: Clear skies, Minimum temperature 64-72° Maximum Relative Humidity 35-50%

20' Winds: Ridges South 5-9 mph becoming southeast 3-5 mph by 2200

Canyon and Valley Southwest 3-6 mph becoming down slope less than 5mph by 2100.

OUTPUTS

FIRE BEHAVIOR

GENERAL: Terrain is flat to vertical escarpments. The fire is shifting into mop-up. The fire has burned in grass oak woodland with gray pines and heavy brush pockets. Fine dead fuels are at 4%. Dead and down fuels are at, or close to, record lows for this time of year. The brush made sustained runs when there was a dead fuel loading combined with wind and/or slope. Probability of Ignition 77. Primary spread of the fire was by torching and then spotting ahead of the main fire.

Specific:

West & South: Is favorable for mop-up and holding. Still have smokes near residences that could present a potential threat to the residence.

Eastern Flank & Branch II: The line is in the second day of mop-up. Smokes around structures and places where the burn did not consume fuels completely will have the most potential to flare-up.

Northern Flank & Branch I: Interior islands will continue to burn out. The line held yesterday. Potential for flare-ups and hidden spots exist. Any developed smoke column has the potential to spot.

Optimal Forward Rates of Spread in the **oak woodland and grass** will be 21-40 chains an hour with 5-8' flame lengths. Flanking fire Rate of Spread will be 4-5 chains per hour with flame lengths of 1-3'. Backing Rates of Spread will be 1-3 with 1-2' flame lengths. Spotting distances up to 1/3 of a mile.

Optimal forward rate of spread in **brush** will be 45-80 chains an hour with 16-24' flame lengths. Flanking fire spread will be 7-9 chains an hour with flame lengths of 6-8'. Backing fire rate of spread will be 2-4' chains per hour, with flame lengths of 3-5' spotting increases to 1/2 mile.

AIR OPERATIONS:

Smoke will hang in the drainages as the winds decrease around sunrise. As winds pick-up, the smoke will clear and turbulence will increase. Morning visibility will be hazy clearing out by 0900. Power lines and radio towers are in the fire area.

SAFETY

The fire is winding down; make sure you have a plan if the fire starts to move. When working around the escarpment ensure lookouts can see what is below the crews. Travel is slow and difficult in these areas. Ensure travel time for escape routes account for he longer travel times.

SAFETY MESSAGE

INCIDENT NAME
HUMBOLDT
CA BTU-7089

DATE PREPARED
06-14-2008

TIME PREPARED
2200

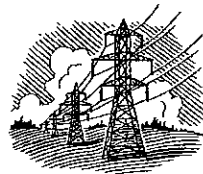
OPERATIONAL PERIOD June 15, 2008 0700 - 0700

**WHEN IT COMES TO SAFETY: THE ONLY THING WORSE
THAN BEING OBLIVIOUS TO THE UNKNOWN IS
IGNORING THE OBVIOUS...**

Use of PPEs at all times, even during mop up.



Don't let Complacency become a Hazard.



Power lines: Treat all power lines as if they were hot.

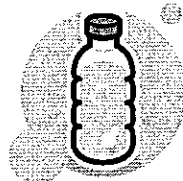
Traffic: Traffic is a serious safety hazard for both us and the citizens we protect.

Fire Weather: Extreme fire weather equals the potential for extreme fire behavior. Be prepared for flare ups and new starts.

Work-Rest: Fatigue can become a safety issue for all of us. Be sure to utilize good work-rest cycles.

Terrain: Use extreme caution near steep terrain and natural chimneys.

JOIN THE HYDRATION NATION!!!! Have a drink on us...



- **Brief your crews on all components of the IAP**
- **Continually monitor your crews for sign & symptoms of heat illness**
- **Insure your crews are well hydrated and are provide rest breaks**
- **Personal Monitoring:**
 - **Keep track of your urine output**
 - **Monitor your core temperature and pulse rate**

HEAT RELATED ILLNESS IS PREVENTABLE

Prepared By:

Approved By (Safety Officer, ICT #2)
Incident Safety Officer, Scott Upton

DIVISION ASSIGNMENT LIST		1. Branch		2. Division/Group			
3. Incident Name HUMBOLDT		4. Operational Period					
		Date: June 15, 2008				Time: 0700-0700	
5. Operations Personnel							
Operations Chief		Jim Sweet/Jerry Burke (Day) Steve Emerick (Night)		Division/Group Supervisor		John Messina	
Branch Director		Pat Bailey		Air Attack Supervisor No.		Dave Junette/Randy Rapp	
6. Resources Assigned this Period							
Strike Team/Task Force/ Resource Designator	Leader	Number Persons	Trans. Needed	Drop Off PT./Time	Pick Up PT./Time		
ST 9120-C	Barnett	16		DP 18/0830	DP 18/0830		
ST 9150-C	Brown	18		DP 18/0830	DP 18/0830		
ST 9240-C	Letson	21		DP 18/0830	DP 18/0830		
ST 9440-C	O'Meara	21		DP 18/0830	DP 18/0830		
ST 9275-G	Boston	32		DP 18/0830	DP 18/0830		
ST 9254-G	Ruggle	32		DP 18/0830	DP 18/0830		
ST 9222-G	Walker	33		DP 18/0830	DP 18/0830		
CRW Salt Creek #4	Knutsen	16		DP 18/0830	DP 18/0830		
CRW Salt Creek #5	Cobb	16		DP 18/0830	DP 18/0830		
ST 9225-L	Lee	6		DP 18/0830	DP 18/0830		
DOZ RBL E-201	Rogers	2		DP 18/0830	DP 18/0830		
WT Alans E-215	Wharff	2		DP 18/0830	DP 18/0830		
WT Floodgate E-221	Paula	2		DP 18/0830	DP 18/0830		
WT Gary Ford E-222	Barlow	2		DP 18/0830	DP 18/0830		
WT El Dorado E-227	Heness	2		DP 18/0830	DP 18/0830		
DOZB	Adams/Casci (T)	2		DP 18/0830	DP 18/0830		
FALC Morgan E-126	Morgan	2		DP 18/0830	DP 18/0830		
CRW ST/LDR Salt Creek	Wallen	1					
7. Control Operations							
Improve and hold line. Patrol and mop up 150 feet in.							
8. Special Instructions							
Safety Officers Silverman and McNamara are assigned to the entire fire.							
9. Division/Group Communication Summary							
Function	Frequency	System	Channel	Function	Frequency	System	Channel
Command	RX 151.355 TX 159.300	King NIFC	CDF CMD 1 CHANNEL 1	Logistics	RX 154.220 TX 159.195	King NIFC	OES 2B CHANNEL 3
Tactical Div/Group	RX/TX 154.265	King NIFC	WHITE 2 CHANNEL 5	Air to Ground	RX/TX 151.2200	King NIFC	CDF A/G CHANNEL 13
Prepared by (Resource Unit Ldr.)		Approved by (Planning Sect. Ch.)			Date		Time
LINDA GREEN/JEFF SCHIMKE		SCOTT JALBERT			June 15, 2008		0100

DIVISION ASSIGNMENT LIST		1. Branch I		2. Division/Group B			
3. Incident Name HUMBOLDT		4. Operational Period Date: June 15, 2008 Time: 0700-0700					
5. Operations Personnel							
Operations Chief		Jim Sweef/Jerry Burke (Day) Steve Emerick (Night)		Division/Group Supervisor Brian Alderman			
Branch Director		Pat Bailey		Air Attack Supervisor No. Dave Junette/Randy Rapp			
6. Resources Assigned this Period							
Strike Team/Task Force/ Resource Designator	Leader	Number Persons	Trans. Needed	Drop Off PT./Time	Pick Up PT./Time		
ST 2150-C	Greibel	17		DP 16/0830	DP 16/0830		
ST 9410-C	Peretto	22		DP 16/0830	DP 16/0830		
ST 9140-G	Robbins	29		DP 16/0830	DP 16/0830		
ST 9241-G	Chartier	33		DP 16/0830	DP 16/0830		
ST 9274-G	Neal	37		DP 16/0830	DP 16/0830		
ST 9250-L	Smith	5		DP 16/0830	DP 16/0830		
WT Lenahans E-217	Hughes	2		DP 16/0830	DP 16/0830		
WT NorCal E-218	Strieff	2		DP 16/0830	DP 16/0830		
WT Wallace E-223	Verte	2		DP 16/0830	DP 16/0830		
WT 49er E-224	Shesher	2		DP 16/0830	DP 16/0830		
7. Control Operations Improve and hold line. Patrol and mop up 150 feet in.							
8. Special Instructions Safety Officers Silverman and McNamara are assigned to the entire fire.							
9. Division/Group Communication Summary							
Function	Frequency	System	Channel	Function	Frequency	System	Channel
Command	RX 151.355 TX 159.300	King NIFC	CDF CMD 1 CHANNEL 1	Logistics	RX 154.220 TX 159.195	King NIFC	OES 2B CHANNEL 3
Tactical Div/Group	RX/TX 151.385	King NIFC	CDF TAC 9 CHANNEL 4	Air to Ground	RX/TX 151.2200	King NIFC	CDF A/G CHANNEL 13
Prepared by (Resource Unit Ldr.) LINDA GREEN/JEFF SCHIMKE		Approved by (Planning Sect. Ch.) SCOTT JALBERT		Date June 15, 2008		Time 0100	

DIVISION ASSIGNMENT LIST		1. Branch II		2. Division/Group D/J			
3. Incident Name HUMBOLDT		4. Operational Period Date: June 15, 2008 Time: 0700-0700					
5. Operations Personnel							
Operations Chief		Jim Sweet/Jerry Burke (Day) Steve Emerick (Night)		Division/Group Supervisor		Chad Porter	
Branch Director		Mike Brown		Air Attack Supervisor No.		Dave Junette/Randy Rapp	
6. Resources Assigned this Period							
Strike Team/Task Force/ Resource Designator		Leader		Number Persons	Trans. Needed	Drop Off PT./Time	Pick Up PT./Time
ST 4801-A		Lindsey		22		DP 6/0830	DP 6/0830
ST 2378-C		Gedecarli		21		DP 6/0830	DP 6/0830
ST 6808-C		Whisenand		21		DP 6/0830	DP 6/0830
ST 9110-G				32		DP 6/0830	DP 6/0830
ST 9258-G		Gowan		33		DP 6/0830	DP 6/0830
WT All Terrain E-219		Arata		2		DP 6/0830	DP 6/0830
WT Pargett E-226		Graul		2		DP 6/0830	DP 6/0830
7. Control Operations Improve and hold line. Patrol and mop up 200 feet in.							
8. Special Instructions Safety Officers Silverman and McNamara are assigned to the entire fire.							
9. Division/Group Communication Summary							
Function	Frequency	System	Channel	Function	Frequency	System	Channel
Command	RX 151.355 TX 159.300	King NIFC	CDF CMD 1 CHANNEL 1	Logistics	RX 154.220 TX 159.195	King NIFC	OES 2B CHANNEL 3
Tactical Div/Group	RX/TX 168.6000	King NIFC	NIFC TAC 3 CHANNEL 8	Air to Ground	RX/TX 151.2200	King NIFC	CDF A/G CHANNEL 13
Prepared by (Resource Unit Ldr.) LINDA GREEN/JEFF SCHIMKE		Approved by (Planning Sect. Ch.) SCOTT JALBERT			Date June 15, 2008		Time 0100

DIVISION ASSIGNMENT LIST		1. Branch III		2. Division/Group N/O/T			
3. Incident Name HUMBOLDT		4. Operational Period Date: June 15, 2008 Time: 0700-0700					
5. Operations Personnel							
Operations Chief		Jim Sweet/Jerry Burke (Day) Steve Emerick (Night)		Division/Group Supervisor		Sean Norman	
Branch Director				Air Attack Supervisor No.		Dave Junette/Randy Rapp	
6. Resources Assigned this Period							
Strike Team/Task Force/ Resource Designator		Leader		Number Persons	Trans. Needed	Drop Off PT./Time	Pick Up PT./Time
ST 4051-C				19		DP 2/0830	DP 2/0830
ST 9320-C		Brady		18		DP 2/0830	DP 2/0830
ST 9122-G		Furia		29		DP 2/0830	DP 2/0830
WT Johnson E-232		Westman		2		DP 2/0830	DP 2/0830
7. Control Operations Improve and hold line. Mop up and patrol.							
8. Special Instructions Safety Officers Silverman and McNamara are assigned to the entire fire.							
9. Division/Group Communication Summary							
Function	Frequency	System	Channel	Function	Frequency	System	Channel
Command	RX 151.355 TX 159.300	King NIFC	CDF CMD 1 CHANNEL 1	Logistics	RX 154.220 TX 159.195	King NIFC	OES 2B CHANNEL 3
Tactical Div/Group	RX/TX 154.295	King NIFC	WHITE 3 CHANNEL 6	Air to Ground	RX/TX 151.2200	King NIFC	CDF A/G CHANNEL 13
Prepared by (Resource Unit Ldr.) LINDA GREEN/JEFF SCHIMKE		Approved by (Planning Sect. Ch.) SCOTT JALBERT			Date June 15, 2008		Time 0100

DIVISION ASSIGNMENT LIST			1. Branch		2. Division/Group COLLEGE STAGING		
3. Incident Name HUMBOLDT			4. Operational Period Date: June 15, 2008 Time: 0700-0700				
5. Operations Personnel							
Operations Chief		Jim Sweet/Jerry Burke (Day) Steve Emerick (Night)		Staging Area Manager		Travis Bowersox	
Branch Director				Air Attack Supervisor No.		Dave Junette/Randy Rapp	
6. Resources Assigned this Period							
Strike Team/Task Force/ Resource Designator		Leader		Number Persons	Trans. Needed	Drop Off PT./Time	Pick Up PT./Time
ST 9473-G		Martinez		33		Butte College	Butte College
WT Glakeler E-212		Jackson		1		Butte College	Butte College
WT Glakeler E-214		Wernhoff		1		Butte College	Butte College
WT Waterdogg E-236		Epperson		2		Butte College	Butte College
7. Control Operations Maintain 3 minute availability. Monitor Command Frequency.							
8. Special Instructions Safety Officers Silverman and McNamara are assigned to the entire fire.							
9. Division/Group Communication Summary							
Function	Frequency	System	Channel	Function	Frequency	System	Channel
Command	RX 151.355 TX 159.300	King NIFC	CDF CMD 1 CHANNEL 1	Logistics	RX 154.220 TX 159.195	King NIFC	OES 2B CHANNEL 3
Tactical Div/Group		King NIFC		Air to Ground	RX/TX 151.2200	King NIFC	CDF A/G CHANNEL 13
Prepared by (Resource Unit Ldr.) LINDA GREEN/JEFF SCHIMKE		Approved by (Planning Sect. Ch.) SCOTT JALBERT			Date June 15, 2008		Time 0100

DIVISION ASSIGNMENT LIST		1. Branch		2. Division/Group FIRELINE SUPPRESSION REPAIR			
3. Incident Name HUMBOLDT		4. Operational Period Date: June 15, 2008 Time: 0700-0700					
5. Operations Personnel							
Operations Chief		Jim Sweet/Jerry Burke (Day) Steve Emerick (Night)		Division/Group Supervisor		Ken Kendrick	
Branch Director				Air Attack Supervisor No.		Dave Junette/Randy Rapp	
6. Resources Assigned this Period							
Strike Team/Task Force/ Resource Designator		Leader		Number Persons	Trans. Needed	Drop Off PT./Time	Pick Up PT./Time
CRW Salt Creek #1				17		TBA/0800	TBA/0800
ST 9260-L		Rush		4		TBA/0800	TBA/0800
WT Allens E-216		Palacios		1		TBA/0800	TBA/0800
WT All Terrain E-220				1		TBA/0800	TBA/0800
DOZB		Grimm		1		TBA/0800	TBA/0800
7. Control Operations Maintain 3 minute availability. Monitor Command Frequency.							
8. Special Instructions Check in and out with the Division Group Supervisor as you move through the divisions. Use the Tactical Frequency of the division you are working in. Safety Officers Silverman and McNamara are assigned to the entire fire.							
9. Division/Group Communication Summary							
Function	Frequency	System	Channel	Function	Frequency	System	Channel
Command	RX 151.355 TX 159.300	King NIFC	CDF CMD 1 CHANNEL 1	Logistics	RX 154.220 TX 159.195	King NIFC	OES 2B CHANNEL 3
Tactical Div/Group		King NIFC		Air to Ground	RX/TX 151.2200	King NIFC	CDF A/G CHANNEL 13
Prepared by (Resource Unit Ldr.) LINDA GREEN/JEFF SCHIMKE		Approved by (Planning Sect. Ch.) SCOTT JALBERT		Date June 15, 2008		Time 0100	

INCIDENT RADIO COMMUNICATIONS PLAN		Incident Name HUMBOLDT		Date/Time Prepared 6/14 2100		Operational Period Date/Time 6/15/08 0700 to 0700					
Ch #	Function	Channel Name/Trunked Radio System Talkgroup	Assignment	RX Freq	N or W	RX Tone/NAC	TX Freq	N or W	TX Tone/NAC	Mode A, D or M	Remarks
1	Command	CDF C1	All Divisions	151.355		W	159.300		3	A	
2		CDF C7		151.460		W	159.390		2	A	
3	Command	OES 2B	Incident Base	154.220		W	159.195		3	A	Tone 3 - Incident Support
4	Tactical	CDF T9	Div B	151.385		W	151.385			A	
5	Tactical	White 2	Div A	154.265		W	154.265			A	
6	Tactical	White 3	Div. O, N, & T	154.295		W	154.295			A	
7	Tactical	NIFC Tac 1		168.0500		N	168.0500			A	
8	Tactical	NIFC Tac 3	Div. D & J	168.6000		N	168.6000			A	
9	Tactical	NIFC Tac 4	Div. K, L, & M	164.1375		N	164.1375			A	
10	Tactical	NIFC Tac 5	Div. X, Y & Z	166.7250		N	166.7250			A	
11	Calcord	Calcord	All Divisions	156.075		W	156.075			A	Medical
12	Tactical	NIFC Tac 6	Repair	166.7750		N	166.7750			A	Suppression Repair
13	CDF A/G	CDF A/G	All Divisions	151.2200	N	N	151.2200	N		A	Aircraft Hailing
14	Air Guard	Air Guard	All Divisions	168.6250	N	N	168.6250	N	110.9	A	Aircraft Emergency Hailing
15	CalCord	Medical Tactical	All Divisions	156.075		W	156.075			A	All Medical Traffic
16	Air Guard	Air Guard	All Divisions	168.6250	N	N	168.6250	N	110.9	A	Aircraft Emergency Hailing

Prepared by (Communications Unit)
 Brian D. Kornegay, COM1

Incident Location Chico, CA
 County BTU State CA Latitude N Longitude W

The convention calls for frequency lists to show four digits after the decimal place, followed by either an "N" or a "W", depending on whether the frequency is narrow or wide band. Mode refers to either "A" or "D" indicating analog or digital (e.g. Project 25) or "M" indicating mixed mode. All channels are shown as if programmed in a control station, mobile or portable radio. Repeater and base stations must be programmed with the Rx and Tx reversed.

MEDICAL PLAN	1. Incident Name Humboldt	2. Date Prepared 6/14/08	3. Time Prepared 1400	4. Operational Period 6/15/08 0700-0700 Hrs.				
	5. Incident Medical Aid Station							
Medical Aid Stations		Location			Paramedics Yes No			
MERT CCC		Butte College Inc. Base Phone # (530) 310-1457				X		
DMAT		Butte College Inc. Base Phone # (916) 216-4904			PA			
6. Transportation								
A. Ambulance Services								
Name		Address		Phone		Paramedics Yes No		
First Responder Medics		333 Huss Rd. #100, Chico		911/ BTU ECC		X		
Enloe Medics		1531 Esplanade, Chico		911/ BTU ECC		X		
B. Incident Ambulances								
Name		Location			Paramedics Yes No			
Enloe Flight Care		1531 Esplanade, Chico			X			
First Responder Medics		Butte College Inc. Base			X			
7. Hospitals								
Name	Address	Travel Time		Phone	Helipad		Burn Center	
		Air	Ground		Yes	No	Yes	No
Enloe Hospital	1531 Esplanade, Chico	5	15	911/ BTU ECC	X			X
Oroville Medical Center	2767 Olive Highway, Oroville	5	15	911/ BTU ECC	X			X
Feather River Hospital	5974 Pentz Rd. Paradise	5	15	911/ BTU ECC	X			X
UC Davis Hospital	2315 Stockton Blvd. Sacramento	30		(916) 734-3636			X	
8. Medical Emergency Procedures								
<ul style="list-style-type: none"> - Report all serious injuries to your division supervisor on command net. - Request Air or Ground transportation - Give location (address, GPS), type of injury, and resource needs. - Notify Safety Officer for all significant injuries. - More significant events (i.e. major injury, death, missing person) requires immediate notification to the IC & PIO 								
Prepared by (Medical Unit Leader) Grayson Magana					10. Reviewed by (Safety Officer)			

INCIDENT ACTION PLAN SAFETY ANALYSIS

1. Incident Name

HUMBOLDT

2. Date & Time Prepared

6/14/08 1800

3. Operational Period

6/15/08 0700-0700

LCES* Analysis of Tactical Applications
 Lookouts Communications Escape routes Safety zones

Other Risk Analysis

Division/Group	Downhill Fireline	Underslung Fireline	Indirect Fireline	Mid-slope Fireline	Frontal Assault	Anchor Points	Extreme conditions Spottling, wind-driven	Unburned Area	Snags	500 KV Lines	LCES Mitigations	Hazard Materials	Transportation Thr+	Communications	Structure Protection	Multi-Aircraft	Other Risk Mitigations
A	X	X	X				X	X	X		Provide LCES; Use Fallers; Post Lookouts; PPE			X	X		Stay in communication with adjoining forces. Hydration.
B	X	X	X	X	X		X	X	X	X	Provide LCES; Use Fallers; Post Lookouts; PPE			X	X		Stay in communication with adjoining forces. Hydration.
D/J	X	X						X	X		Provide LCES; Use Fallers; Post Lookouts; PPE			X			Stay in communication with adjoining forces. Hydration.
K	X	X		X				X	X		Provide LCES; Use Fallers; Post Lookouts; PPE			X			Stay in communication with adjoining forces. Hydration.
L/M	X	X		X				X	X	X	Provide LCES; Use Fallers; Post Lookouts; PPE			X			Stay in communication with adjoining forces. Hydration.
N/O/T	X	X		X				X	X	X	Provide LCES; Post Lookouts; PPE			X			Stay in communication with adjoining forces. Hydration.
X/Y/Z	X	X		X				X	X	X	Provide LCES; Post Lookouts; PPE			X			Stay in communication with adjoining forces. Hydration.

Prepared by (Name and Position)

DEMOB INSTRUCTIONS

1. CHECK DEMOB SIGNS FOR RELEASE TIMES.
2. Report to Demob trailer at scheduled time for Demob instructions.
3. Pick up ICS 221 form and report to Ground support for inspections.
4. Get signed off with Supply, Communication, Facilities, Documentation, and Time.
5. Report back to Demob to for final sign off.
6. Provide accurate ETA's and ETD's to home unit or next assignment.

TRAINING SPECIALIST MESSAGE

BEAT THE RUSH!!

Trainer / Evaluators:

If as much work as possible has been
Completed in the position task book,
You are strongly encouraged to take
Advantage of your down time in Camp and conduct
The training close-out with the
Training Specialist....

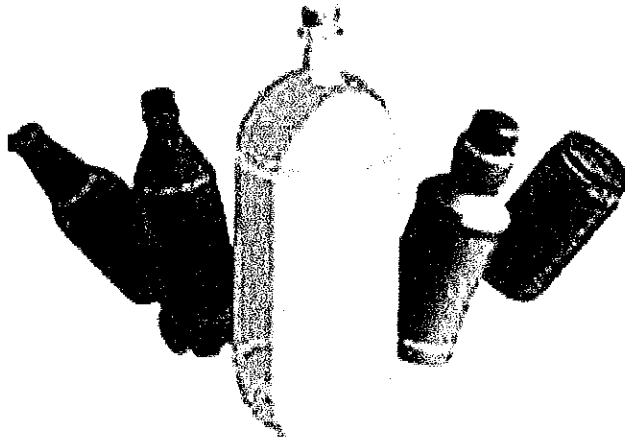
In order to receive documented credit for your
Training assignment – you must
Close out with the Training Specialist
Prior to Demob....

Bring the following documents with you:
A completed and signed ICS 225 Performance Evaluation
You're Position Task Book

Thank you!

Tom Reaves



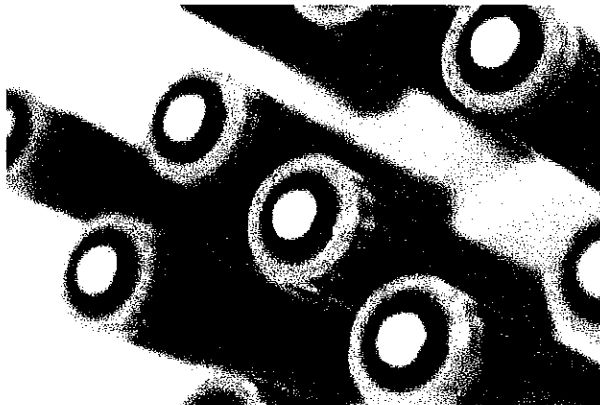


We are recycling on the Humboldt fire. Please use the separate bins for bottles and cans.

On the fire line, please take out black and clear bags. Use the black bags for trash and the clear bags for bottles and cans.

There is an additional trash dumpster and recycling dumpster being placed in Lot 3 for the engines to remove trash and recycling from the engines once back at base camp.

Please remember that we are recycling batteries on this fire. Bring them in from the fire line and put them in the battery boxes at Communications or the Supply area. Do not throw them away.



● FROM THE DESK OF DOCUMENTATION

6/15/08 0700-0700

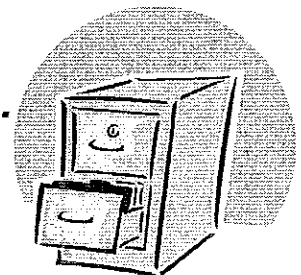
Who needs to turn in what?

Unit Logs (ICS 214's) are required by Strike Team Leaders and above. However, Crews, Engines and possibly other contractors working on the line or in camp, may be asked to fill them out, especially if there has been a significant event that may need to be documented, or if requested by your Supervisor.

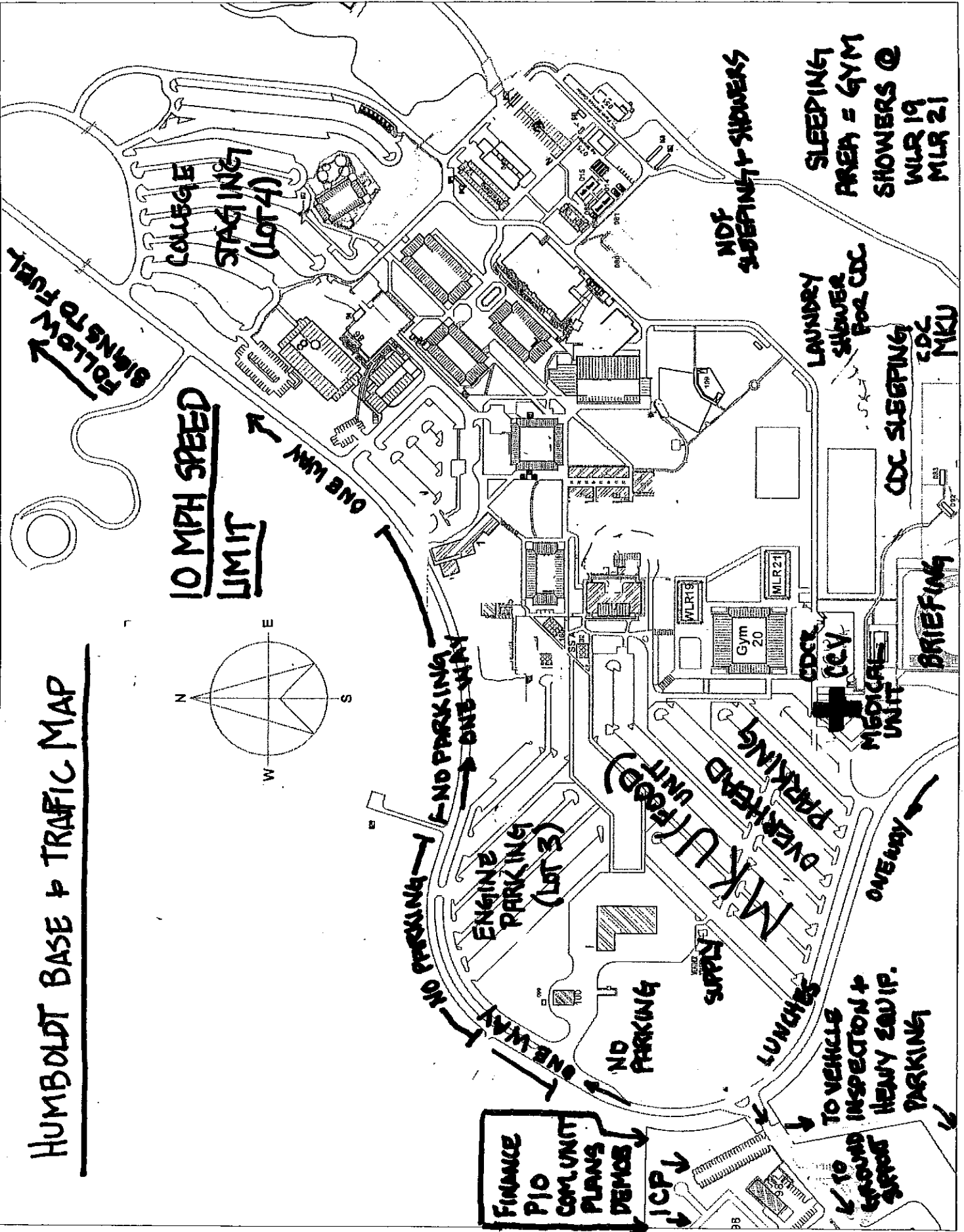
Copies of the Crew (ICS 224's) and Personnel (ICS 225's) Evaluations are sent to your home unit or business office. Therefore, it is imperative to provide the home unit or business name and address on the evaluation form.

Thanks for your help and cooperation.

Kim Moore~Documentation Unit



HUMBOLDT BASE + TRAFFIC MAP



Humboldt Communication PUBLIC Phone List

Incident Name: Humboldt

Incident Commander and Staff

IC
IC(t)
Deputy
Safety Officer
Information 530-342-3089,5168
Information Center (CAL FIRE) 530-538-7826
Liaison 530-342-3168

Agency Representative

Butte County OES
Butte County Sheriff 530-518-6030/530-342-4970
CHP
California OES
PG&E
Butte County DPW

Planning Section 530-345-5294

Chief
Deputy
Resource Unit
Situation Unit 530-899-2867
Documentation Unit
Demobilization/Check-In Unit 415-250-1327
Technical Specialists
Human Resources
Training 530-894-2461
Fire Behavior Analyst 530-949-7719
GIS Tech
Hired Equipment
Meterologist

Logistics Section

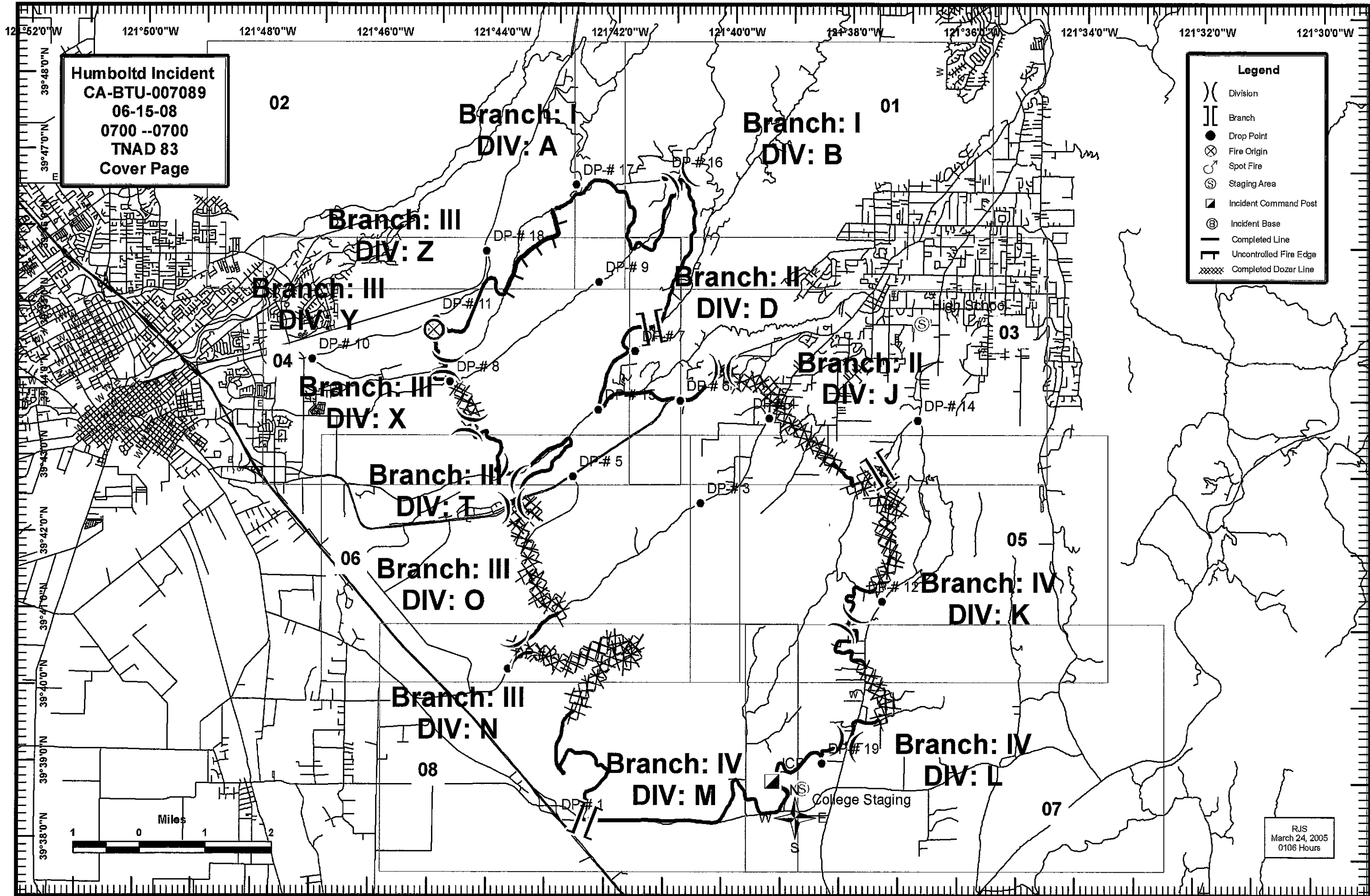
Chief Dawn Peterson(t) 707-599-6554
Deputy
Supply Unit 530-342-3175/650-245-0170
Facilities Unit
Ground Support Section 530-894-8209
Communications Unit 530-342-5648/530-343-1557
Comm Unit Leader 707-489-3233
Medical Unit Leader (magana) 530-518-9688
Medical Unit 530-310-1457
Motel 530-524-4909
Ordering 530-343-2156
Food 530-514-3662 (days)
530-941-9317 (nights)

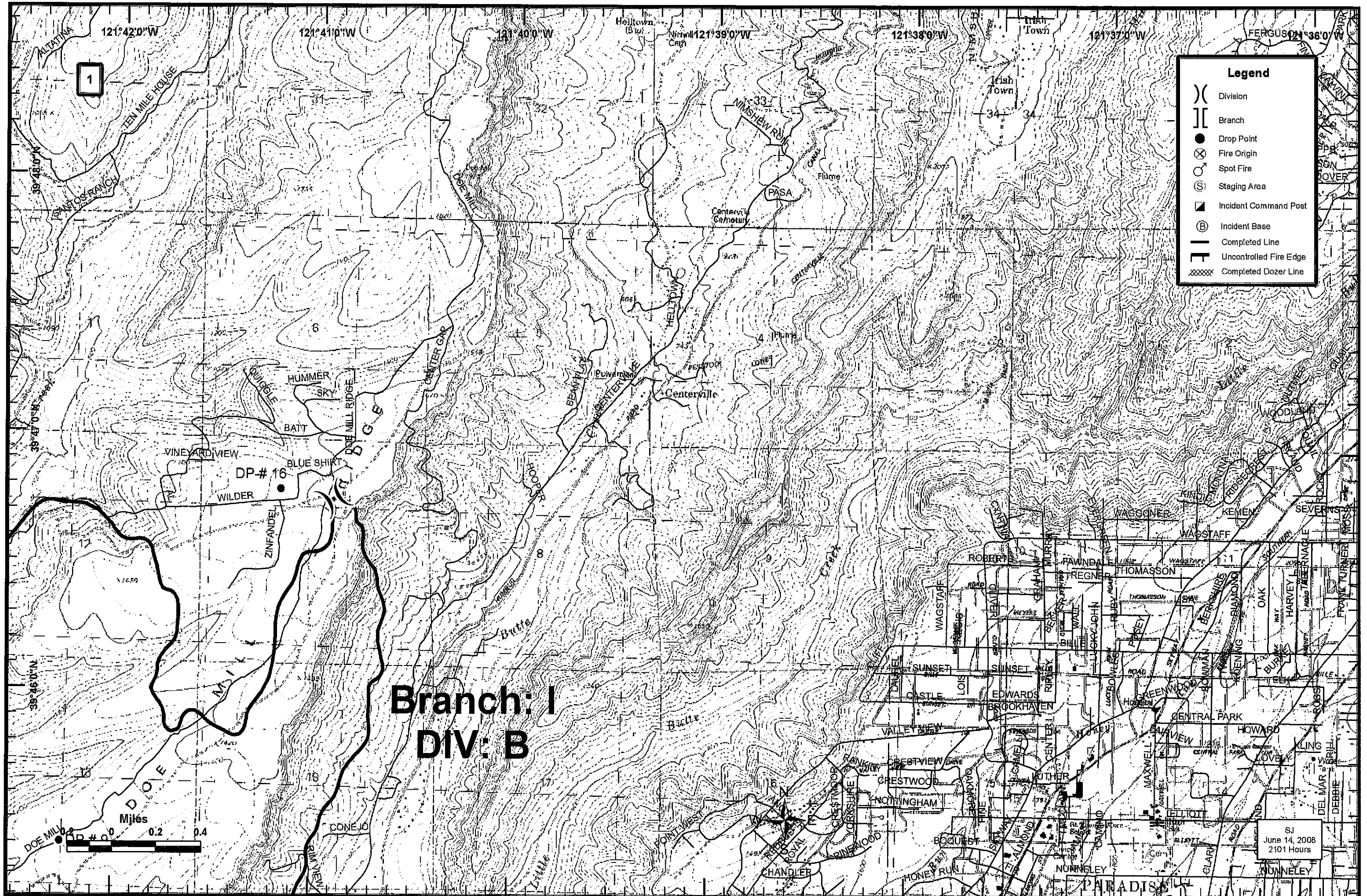
Operations Section

Finance Section

Chief
Time Unit 530-342-3258
Procurement Unit
Compensation/Claims Unit 650-740-6450

Cost Unit





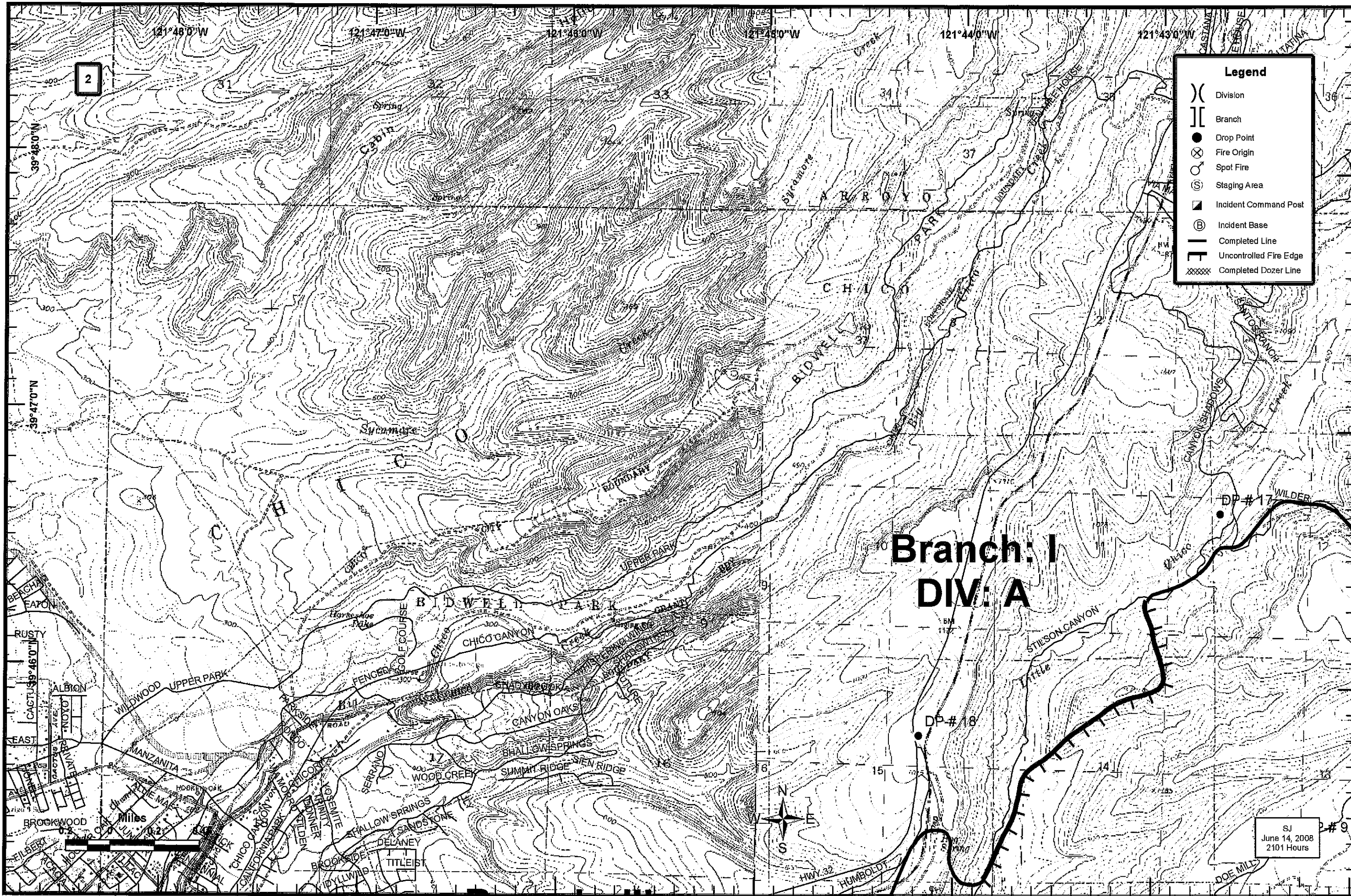
Legend

- (X) Division
- || Branch
- Drop Point
- ⊗ Fire Origin
- ⊙ Spot Fire
- Ⓢ Staging Area
- ▲ Incident Command Post
- Ⓟ Incident Base
- Completed Line
- Uncontrolled Fire Edge
- XXXXX Completed Dozer Line

Branch: I
DIV: B

SJ
June 14, 2008
2101 Hours





Legend

- (X) Division
- (||) Branch
- (●) Drop Point
- (⊗) Fire Origin
- (○) Spot Fire
- (S) Staging Area
- (■) Incident Command Post
- (B) Incident Base
- (—) Completed Line
- (- - -) Uncontrolled Fire Edge
- (XXXXX) Completed Dozer Line

Branch: I
DIV: A

SJ #9
June 14, 2008
2101 Hours

2



Branch: I
DIV: B

Branch: II
DIV: D

Branch: II
DIV: J

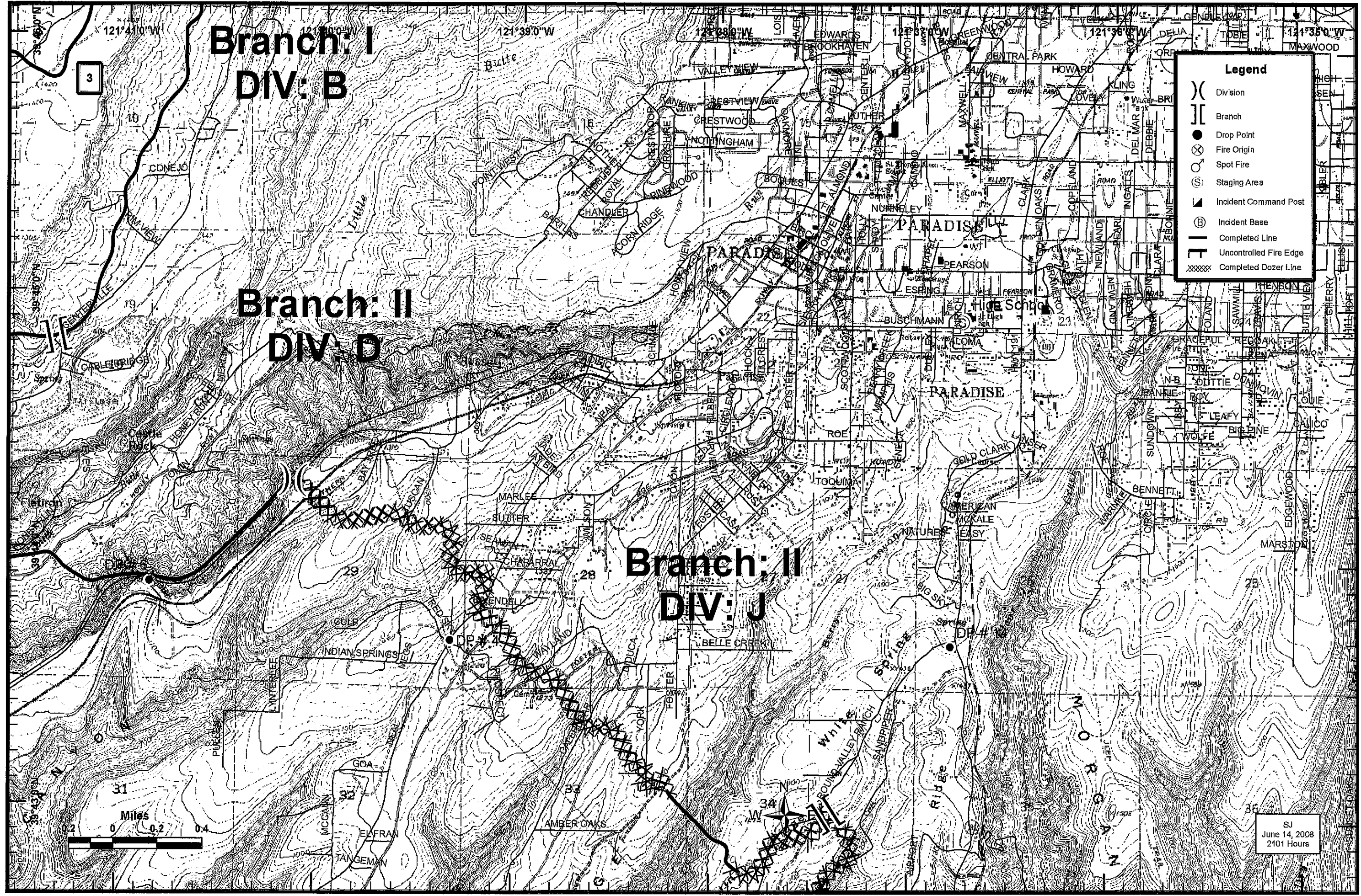
Legend

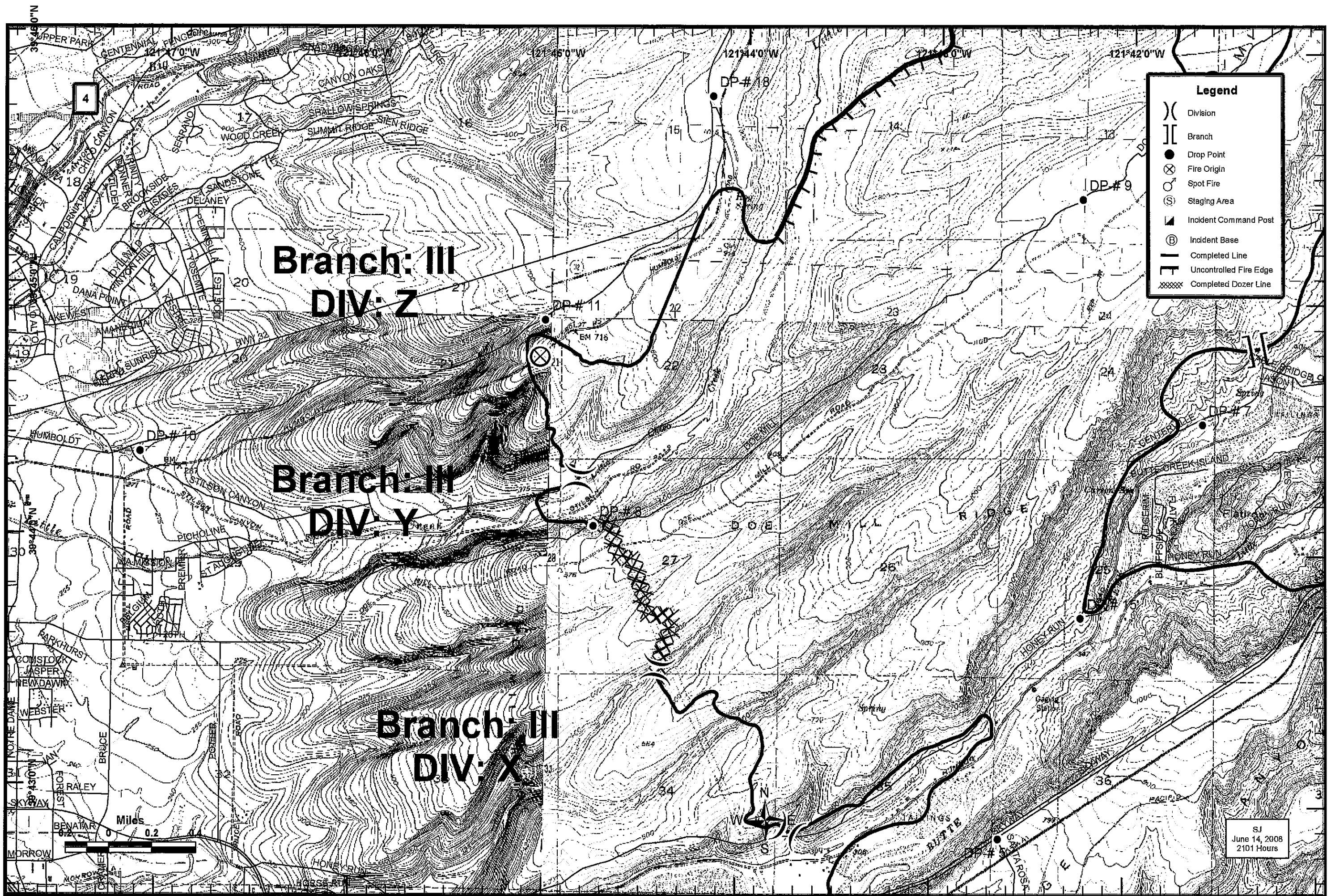
- () Division
- [] Branch
- Drop Point
- ⊗ Fire Origin
- Spot Fire
- ⊙ Staging Area
- ▲ Incident Command Post
- ⊕ Incident Base
- Completed Line
- - - Uncontrolled Fire Edge
- XXXXX Completed Dozer Line

3



SJ
June 14, 2008
2101 Hours





**Branch: III
DIV: Z**

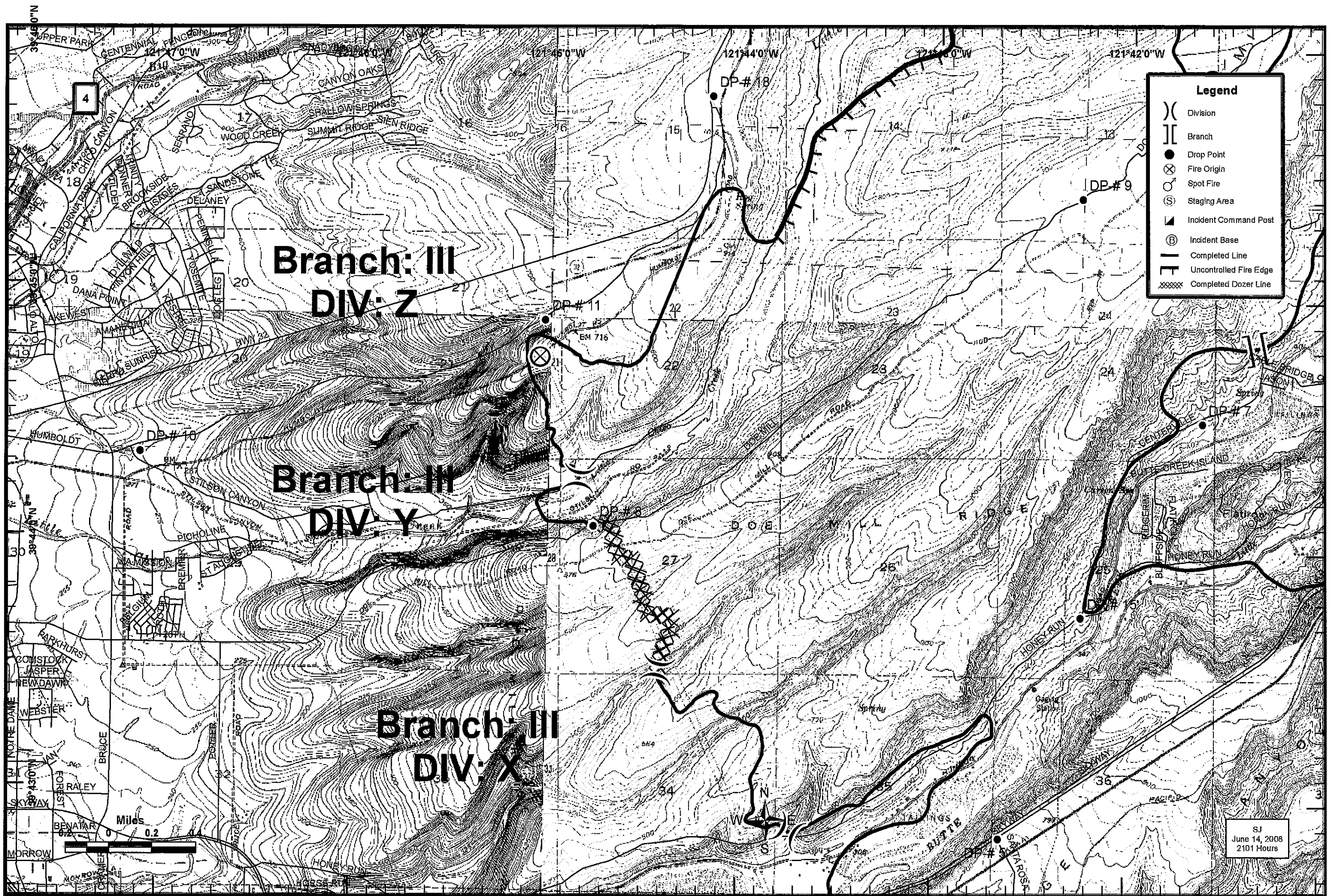
**Branch: III
DIV: Y**

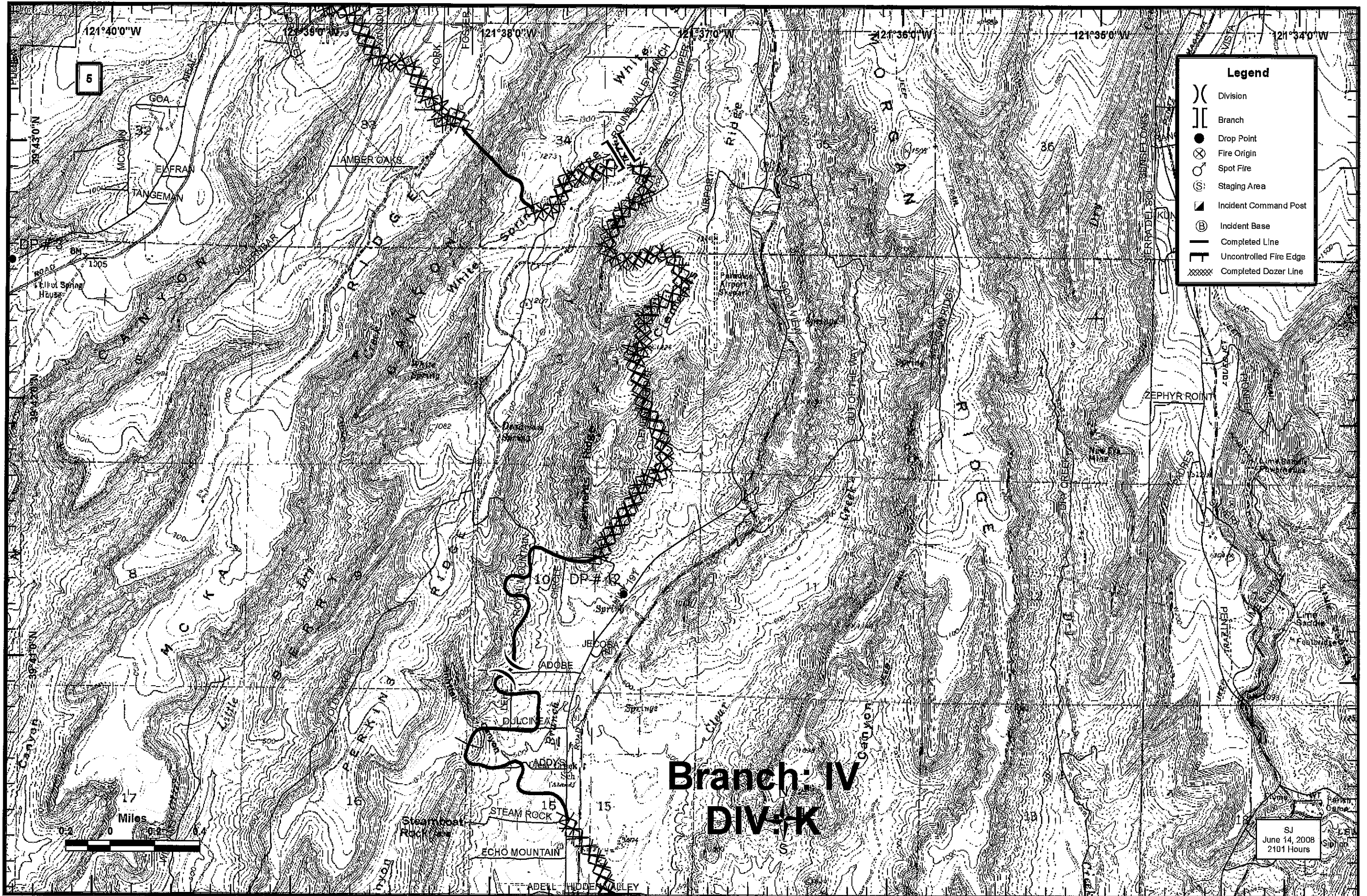
**Branch: III
DIV: X**

Legend

- () Division
- [] Branch
- Drop Point
- ⊗ Fire Origin
- ⊙ Spot Fire
- Ⓢ Staging Area
- ▲ Incident Command Post
- Ⓟ Incident Base
- Completed Line
- Uncontrolled Fire Edge
- XXXXX Completed Dozer Line

SJ
June 14, 2008
2101 Hours



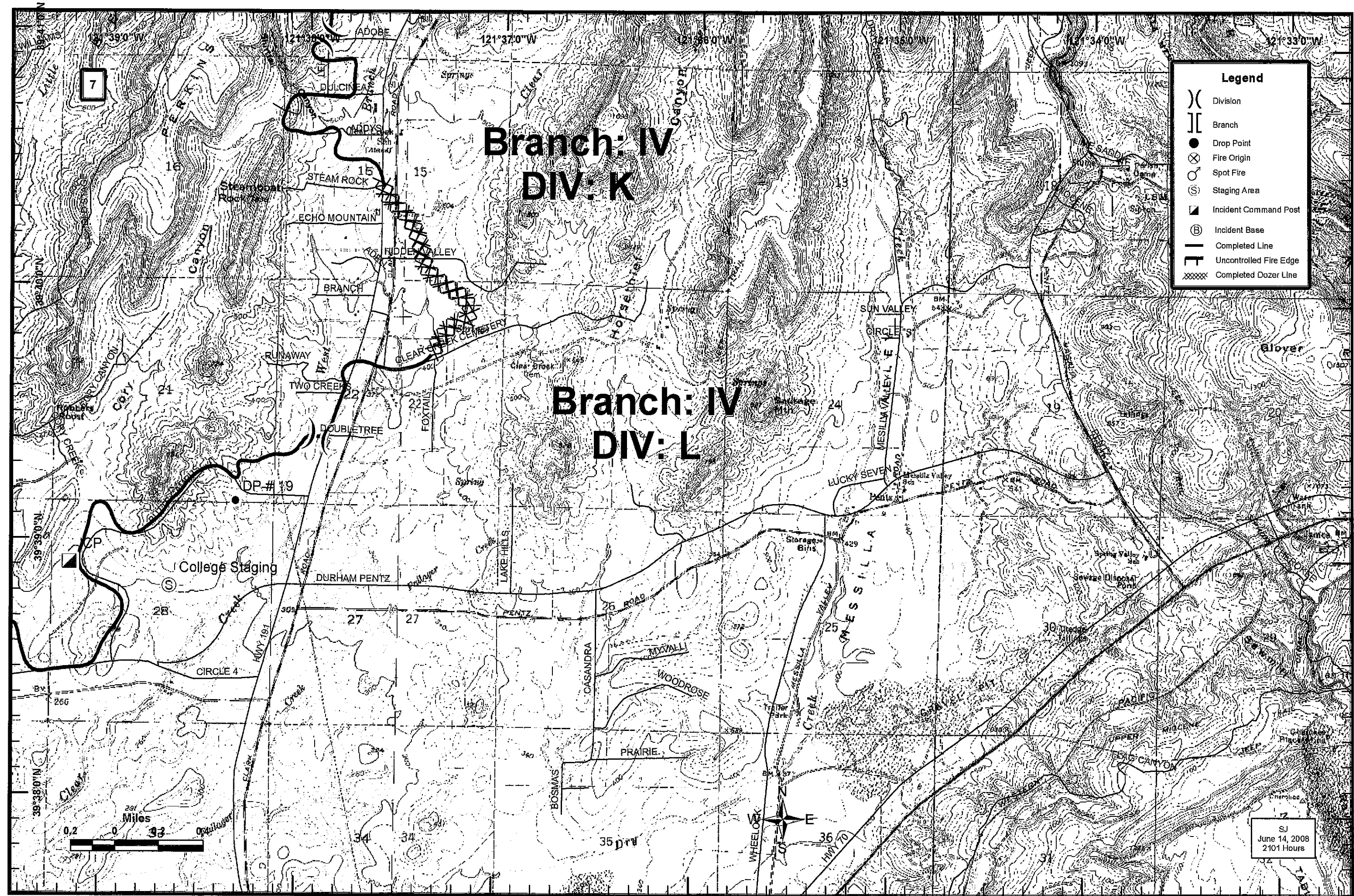


Legend

- (X) Division
- || Branch
- Drop Point
- ⊗ Fire Origin
- ⊙ Spot Fire
- Ⓢ Staging Area
- ▲ Incident Command Post
- Ⓟ Incident Base
- Completed Line
- - - Uncontrolled Fire Edge
- XXXXX Completed Dozer Line

Branch: IV
DIV: K

SJ
June 14, 2008
2101 Hours



**Branch: IV
DIV: K**

**Branch: IV
DIV: L**

Legend

- (X) Division
- (||) Branch
- (●) Drop Point
- (⊗) Fire Origin
- (⊙) Spot Fire
- (S) Staging Area
- (▲) Incident Command Post
- (⊕) Incident Base
- (—) Completed Line
- (- - -) Uncontrolled Fire Edge
- (XXXXX) Completed Dozer Line

SJ
June 14, 2008
2101 Hours



