

HUMBOLDT FIRE

CA-BTU-7089



Incident Action Plan

6-17-2008

0700-0700

ORGANIZATION ASSIGNMENT LIST	
1. Incident Name HUMBOLDT	
2. Date 6-14-2008	3. Time 1500-Hours
4. Operational Period 6-17-2008 0700-0700	
Position	Name
5. Incident Commander and Staff	
Incident Commander	Bob Wallen/Mike Howe (T)/Ron Myers (T)
Deputy	Mark Reina
Safety Officer	Scott Upton / Dave Munch
Information Officer	Kevin Colburn / Janet Upton
Liaison Officer	Jeff Terpstra
6. Agency Representative	
Agency	Name
Cal OES	Dan Tinnel /Ish Messer
Butte Co SO	Sgt. Al Smith
CHP	Scott Gillingwater
7. Planning Section	
Chief	Scott Jalbert
Deputy	Dan Hall / Terrie Ridenhour(T)
Resources Unit	Jeff Schimke / Linda Green
Situation Unit	Helge Eng / Paul Medeiros
Documentation Unit	
Demobilization Unit	Karie Tidwell
Technical Specialists	
Human Resources	
Training	Tom Reaves
Fban	Andy Reiling
GIS Tech	Monty Messenger
Hired Equip	Jason Morris
meteorologist	Chris Jordan
8. Logistics Section	
Chief	Kim Price / Dawn Pedersen (T)
Deputy	
Supply Unit	Scott Ernest
Facilities Unit	Remy Hancock
Ground Support Unit	Danny Sykes
Communications Unit	Brian Kornegay
Medical Unit	Grayson Magana
Motel	Jeffrey Burrows
Ordering	Adam Mattos

9. Operations Section	
Chief	Day Ops Jim Sweet / Night Ops Steve Emerick
Deputy	Jerry Burke
a. Branch I- Division/Groups	
Branch Director	Darrel Wolf
Deputy	
Division/Group	A John Messina
Division/Group	B Brian Alderman
b. Branch II - Division/Groups	
Branch Director	Mike Brown
Deputy	
Division/Group	D / J Steven Hollett
Division/Group	
c. Branch III - Division/Groups	
Branch Director	
Deputy	
Division/Group	N/O/T Mark Higgins
Division/Group	X/Y/Z Dale Barnett
d. Branch IV - Division/Groups	
Branch Director	Bill Roberts
Division	K Sean Norman
Division	L/M (same as Div-K)
Division	
e. Branch V-Division/Groups	
Branch Director	
Fireline Sup Repair	Ken Kendrick
f. Air Operations Branch	
Air Operations Branch Director	David Junnette
Air Attack Supervisor	
Air Support Supervisor	Randy Rapp
Helicopter Coordinator	
Air Tanker Coordinator	
10. Finance Section	
Chief	Vance Moulton
Deputy	
Time Unit	Denise Ehnat
Procurement Unit	Michael Borelli
Compensation/Claims Unit	John Owens
Cost Unit	Phil Anso
Prepared by (Resource Unit Leader) Terrie Ridenhour (PSC-T) <i>Terrie Ridenhour</i>	

FNUS56 KSTO 162205
FWFSTO

FIRE WEATHER PLANNING FORECAST FOR INTERIOR NORTHERN CALIFORNIA
NATIONAL WEATHER SERVICE SACRAMENTO
300 PM PDT MON JUN 16 2008

.DISCUSSION...

NORTHWESTERLY FLOW ACROSS FAR NORTHERN CALIFORNIA COUPLED WITH
DOWNSLOPE WINDS WILL PRODUCE SLIGHTLY WARMER AND DRIER CONDITIONS
THROUGH MIDWEEK. AREAS MOST AFFECTED BY THIS TREND INCLUDE FAR
NORTHERN INTERIOR...COASTAL DISTRICTS...AND WEST SLOPES OF THE
SIERRA NEVADA. A TROUGH MOVING INTO THE WEST COAST WILL BEGIN
AFFECTING CALIFORNIA ON THURSDAY. OVERNIGHT RECOVERIES WILL IMPROVE
AS TEMPERATURES TREND DOWNWARD WITH ENHANCED ONSHORE FLOW. MORE
PRONOUNCED COOLING AND MOISTENING WILL OCCUR ON FRIDAY.

CAZ266-172045-

NORTHERN SIERRA FOOTHILLS FROM 1000 TO 3000 FT. INCLUDES PORTIONS
OF SHASTA-TRINITY AND BUTTE UNITS-
300 PM PDT MON JUN 16 2008

.TONIGHT...

SKY/WEATHER.....CLEAR.
MIN TEMPERATURE.....59-68.
24 HR TREND.....LITTLE CHANGE.
MAX HUMIDITY.....35-55 PERCENT.
24 HR TREND.....LITTLE CHANGE.
20-FOOT WINDS.....
VALLEYS/LWR SLOPES...SOUTH WINDS 8 TO 13 MPH SHIFTING TO THE
EAST AFTER MIDNIGHT.
RIDGES/UPR SLOPES....SOUTH WINDS 8 TO 13 MPH IN THE EVENING
BECOMING VARIABLE 4 TO 8 MPH.
LAL.....1.
CHC OF WETTING RAIN.0 PERCENT.

.TUESDAY...

SKY/WEATHER.....SUNNY.
MAX TEMPERATURE.....86-96.
24 HR TREND.....2 DEGREES WARMER.
MIN HUMIDITY.....10-25 PERCENT.
24 HR TREND.....LITTLE CHANGE.
20-FOOT WINDS.....
VALLEYS/LWR SLOPES...UPSLOPE/UPVALLEY 3 TO 7 MPH BECOMING SOUTH
8 TO 12 MPH IN THE AFTERNOON.
RIDGES/UPR SLOPES....VARIABLE 4 TO 9 MPH BECOMING SOUTH 10 TO
15 MPH IN THE AFTERNOON.
LAL.....1.
CHC OF WETTING RAIN.0 PERCENT.

.TUESDAY NIGHT...

SKY/WEATHER.....CLEAR.
MIN TEMPERATURE.....58-69.
MAX HUMIDITY.....35-55 PERCENT.
20-FOOT WINDS.....
VALLEYS/LWR SLOPES...SOUTH WINDS 9 TO 14 MPH SHIFTING TO THE
NORTHEAST 7 TO 10 MPH AFTER MIDNIGHT.
RIDGES/UPR SLOPES....SOUTH WINDS 9 TO 14 MPH WITH LOCAL GUSTS
15 TO 25 MPH SHIFTING TO THE NORTHEAST 7
TO 10 MPH AFTER MIDNIGHT.
LAL.....1.
CHC OF WETTING RAIN.0 PERCENT.

SAFETY MESSAGE

INCIDENT NAME

DATE
PREPARED
6/16/08

TIME
PREPARED
1400 hours

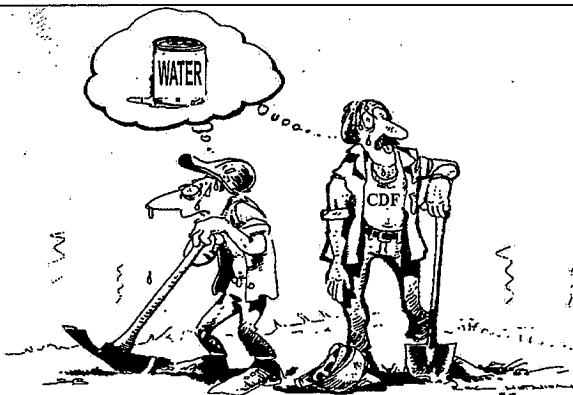
Humboldt

OPERATIONAL PERIOD (DATE / TIME) 6/17/2008 0700-0700

Remember – Everyone is a considered a Safety Officer.

1. **Complacency:** It's up to each of us to control and eliminate complacency. Challenge yourself to focus on the task at hand. Maintain a positive attitude, and continue to work towards the #1 Management Objective in your I.A.P.
2. **Traffic:** Report vehicle damage or accidents to the safety officers so they can assist you with the documentation. Drive defensively with your lights on and slow down. Clean your windshields and use your chock blocks.
3. **Dehydration:** Drink a lot of water. Drink 3 Waters to every 1 Gatorade. Avoid beverages with caffeine. If you are thirsty, you are already dehydrated. Remember P.N.3. (Urinate every three hours or you are Dehydrated).
4. **Communicable Diseases:** Wash Often! Wash hands before eating or handling food. Wash your hands after using the bathroom. Coughing and sneezing next to each other (airborne droplets) spreads colds and "Camp Crud" quicker than anything else. Practice good hygiene.
5. **Footing:** Continue to be cautious with your footing in steep terrain. Also use caution in areas of known mine shafts. Take proper care of your feet to help prevent unnecessary injuries.

***Remember if you don't want to suffer with poison oak stop by the Med Unit and pick up some pre treatment.**



LOOKOUT
COMMUNICATION
ESCAPE ROUTES
SAFETY ZONES

Prepared by:

Josh Pero, SOFR (t)

Approved By (Safety Officer)

Scott Upton

INCIDENT ACTION PLAN SAFETY ANALYSIS

1. Incident Name

HUMBOLDT

2. Date & Time Prepared

6/16/08 1800

3. Operational Period

6/17/08 0700-0700

LCES* Analysis of Tactical Applications
Lookouts; Communications; Escape routes; Safety zones

Other Risk Analysis

Division/Group	Downhill Fireline	Underslung Fireline	Indirect Fireline	Mid-slope Fireline	Frontal Assault	Anchor Points	Extreme conditions Spotting, wind-driven	Unburned Area	Snags	500 KV Lines	LCES Mitigations	Hazard Materials	Transportation Thr+	Communications	Structure Protection	Mine Shafts	Other Risk Mitigations
A	X	X				X	X	X	X		Provide LCES; Use Fallers; Post Lookouts; PPE			X	X		Stay in communication with adjoining forces. Hydration.
B	X	X		X		X	X	X	X	X	Provide LCES; Use Fallers; Post Lookouts; PPE			X	X		Stay in communication with adjoining forces. Hydration.
D/J		X				X	X	X	X		Provide LCES; Use Fallers; Post Lookouts; PPE			X	X		Stay in communication with adjoining forces. Hydration.
K		X		X		X	X	X	X		Provide LCES; Use Fallers; Post Lookouts; PPE			X	X		Stay in communication with adjoining forces. Hydration.
L/M		X		X		X	X	X	X	X	Provide LCES; Use Fallers; Post Lookouts; PPE			X	X		Stay in communication with adjoining forces. Hydration.
N/O/T	X	X		X		X	X	X	X	X	Provide LCES; Post Lookouts; PPE			X	X		Stay in communication with adjoining forces. Hydration.
X/Y/Z	X	X		X		X	X	X	X	X	Provide LCES; Post Lookouts; PPE			X	X		Stay in communication with adjoining forces. Hydration.

Prepared by (Name and Position)

Josh Pero SOFR (t)



DIVISION ASSIGNMENT LIST			1. Branch I		2. Division/Group A		
3. Incident Name HUMBOLDT			4. Operational Period Date: June 17, 2008 Time: 0700-0700				
5. Operations Personnel							
Operations Chief		Jim Sweet/Jerry Burke (Day) Steve Emerick (Night)		Division/Group Supervisor		John Messina	
Branch Director		Darrell Wolf		Air Attack Supervisor No.		Dave Junette/Randy Rapp	
6. Resources Assigned this Period							
Strike Team/Task Force/ Resource Designator	Leader		Number Persons	Trans. Needed	Drop Off PT./Time		Pick Up PT./Time
ST 9240-C	Letson		21		DP 17/0830		DP 17/0830
ST 9440-C	O'Meara		21		DP 17/0830		DP 17/0830
ST 9254-G	Ruggle		32		DP 17/0830		DP 17/0830
ST 9257-G	Boston		32		DP 17/0830		DP 17/0830
ST LDR (for Salt Creek)	Wallen		1		DP 17/0830		DP 17/0830
CRW Salt Creek #4	Knutsen		16		DP 17/0830		DP 17/0830
CRW Salt Creek #5	Cobb		16		DP 17/0830		DP 17/0830
WT Alans E-215	Wharff		1		DP 17/0830		DP 17/0830
WT Floodgate E-221	Paula		1		DP 17/0830		DP 17/0830
WT Gary Ford E-222	Barlow		1		DP 17/0830		DP 17/0830
WT 49er E-224	Shesher		1		DP 17/0830		DP 17/0830
WT El Dorado E-227	Heness		1		DP 17/0830		DP 17/0830
7. Control Operations Patrol and mop up 300 feet in. Pull any hose. Backhaul trash to DP.							
8. Special Instructions All Hired Equipment is on a 12-hour shift. Safety Officers Warren and Goodwin are assigned to the entire fire.							
9. Division/Group Communication Summary							
Function	Frequency	System	Channel	Function	Frequency	System	Channel
Command	RX 151.355 TX 159.300	King NIFC	CDF CMD 1 CHANNEL 1	Logistics	RX 154.220 TX 159.195	King NIFC	OES 2B CHANNEL 3
Tactical Div/Group	RX/TX 154.265	King NIFC	WHITE 2 CHANNEL 5	Air to Ground	RX/TX 151.2200	King NIFC	CDF A/G CHANNEL 13
Prepared by (Resource Unit Ldr.) LINDA GREEN/JEFF SCHIMKE			Approved by (Planning Sect. Ch.) SCOTT JALBERT		Date June 16, 2008		Time 2200

DIVISION ASSIGNMENT LIST		1. Branch II		2. Division/Group D/J			
3. Incident Name HUMBOLDT		4. Operational Period Date: June 17, 2008 Time: 0700-0700					
5. Operations Personnel							
Operations Chief		Jim Sweet/Jerry Burke (Day) Steve Emerick (Night)		Division/Group Supervisor Steven Hollett			
Branch Director		Mike Brown		Air Attack Supervisor No. Dave Junette/Randy Rapp			
6. Resources Assigned this Period							
Strike Team/Task Force/ Resource Designator	Leader	Number Persons	Trans. Needed	Drop Off PT./Time	Pick Up PT./Time		
ST 9310-C	McGough	22		DP 4/0830	DP 4/0830		
ST 9258-G	Gowan	33		DP 4/0830	DP 4/0830		
7. Control Operations Mop up around structures. Backhaul trash to DP. Patrol.							
8. Special Instructions All Hired Equipment is on a 12-hour shift. Safety Officers Warren and Goodwin are assigned to the entire fire.							
9. Division/Group Communication Summary							
Function	Frequency	System	Channel	Function	Frequency	System	Channel
Command	RX 151.355 TX 159.300	King NIFC	CDF CMD 1 CHANNEL 1	Logistics	RX 154.220 TX 159.195	King NIFC	OES 2B CHANNEL 3
Tactical Div/Group	RX/TX 168.6000	King NIFC	NIFC TAC 3 CHANNEL 8	Air to Ground	RX/TX 151.2200	King NIFC	CDF A/G CHANNEL 13
Prepared by (Resource Unit Ldr.) LINDA GREEN/JEFF SCHIMKE		Approved by (Planning Sect. Ch.) SCOTT JALBERT		Date June 16, 2008		Time 2200	

DIVISION ASSIGNMENT LIST			1. Branch IV		2. Division/Group K		
3. Incident Name HUMBOLDT			4. Operational Period Date: June 17, 2008 Time: 0700-0700				
5. Operations Personnel							
Operations Chief		Jim Sweet/Jerry Burke (Day) Steve Emerick (Night)		Division/Group Supervisor		Sean Norman	
Branch Director		Bill Roberts		Air Attack Supervisor No.		Dave Junette/Randy Rapp	
6. Resources Assigned this Period							
Strike Team/Task Force/ Resource Designator	Leader		Number Persons	Trans. Needed	Drop Off PT./Time		Pick Up PT./Time
ST 9150-C	Brown		18		DP 14/0830		DP 14/0830
ST 9210-C	DeLong		21		DP 14/0830		DP 14/0830
ST 9122-G	Furia		29		DP 14/0830		DP 14/0830
ST 9222-G	Walker		33		DP 14/0830		DP 14/0830
WT 49er E-225	Shesher		1		DP 14/0830		DP 14/0830
WT Pargett E-226	Graul		1		DP 14/0830		DP 14/0830
7. Control Operations Patrol and mop up. Pull hose from division. Backhaul trash to DP.							
8. Special Instructions All Hired Equipment is on a 12-hour shift. Safety Officers Warren and Goodwin are assigned to the entire fire.							
9. Division/Group Communication Summary							
Function	Frequency	System	Channel	Function	Frequency	System	Channel
Command	RX 151.355 TX 159.300	King NIFC	CDF CMD 1 CHANNEL 1	Logistics	RX 154.220 TX 159.195	King NIFC	OES 2B CHANNEL 3
Tactical Div/Group	RX/TX 164.1375	King NIFC	NIFC TAC 4 CHANNEL 9	Air to Ground	RX/TX 151.2200	King NIFC	CDF A/G CHANNEL 13
Prepared by (Resource Unit Ldr.) LINDA GREEN/JEFF SCHIMKE			Approved by (Planning Sect. Ch.) SCOTT JALBERT		Date June 16, 2008		Time 2200

DIVISION ASSIGNMENT LIST		1. Branch		2. Division/Group			
3. Incident Name HUMBOLDT		4. Operational Period Date: June 17, 2008 Time: 0700-0700					
5. Operations Personnel							
Operations Chief		Jim Sweet/Jerry Burke (Day) Steve Emerick (Night)		Division/Group Supervisor Ken Kendrick			
Branch Director				Air Attack Supervisor No. Dave Junette/Randy Rapp			
6. Resources Assigned this Period							
Strike Team/Task Force/ Resource Designator	Leader	Number Persons	Trans. Needed	Drop Off PT./Time	Pick Up PT./Time		
CRW Salt Creek #1	Romine	16		TBA/0800	TBA/0800		
ST 9225-L	Lee	6		TBA/0800	TBA/0800		
ST 9260-L	Rush	4		TBA/0800	TBA/0800		
DOZ Diamond Ring E-309	Britton	1		TBA/0800	TBA/0800		
WT Allens E-216	Palacios	1		TBA/0800	TBA/0800		
WT All Terrain E-220		1		TBA/0800	TBA/0800		
Excavator E-414	Anchordogui	1		TBA/0800	TBA/0800		
DOZB	Grimm	1		TBA/0800	TBA/0800		
FOBS	Rodriguez	1		TBA/0800	TBA/0800		
7. Control Operations Maintain 3 minute availability. Monitor Command Frequency.							
8. Special Instructions Check in and out with the Division Group Supervisor as you move through the divisions. Use the Tactical Frequency of the division you are working in. All Hired Equipment is on a 12-hour shift. Safety Officers Warren and Goodwin are assigned to the entire fire.							
9. Division/Group Communication Summary							
Function	Frequency	System	Channel	Function	Frequency	System	Channel
Command	RX 151.355 TX 159.300	King NIFC	CDF CMD 1 CHANNEL 1	Logistics	RX 154.220 TX 159.195	King NIFC	OES 2B CHANNEL 3
Tactical Div/Group		King NIFC		Air to Ground	RX/TX 151.2200	King NIFC	CDF A/G CHANNEL 13
Prepared by (Resource Unit Ldr.) LINDA GREEN/JEFF SCHIMKE		Approved by (Planning Sect. Ch.) SCOTT JALBERT		Date June 16, 2008		Time 2000	

INCIDENT RADIO COMMUNICATIONS PLAN				Incident Name HUMBOLDT		Date/Time Prepared 6/16 2100		Operational Period Date/Time 6/17/08 0700 to 0700			
Ch #	Function	Channel Name/Trunked Radio System Talkgroup	Assignment	RX Freq	N or W	RX Tone/NAC	TX Freq	N or W	Tx Tone/NAC	Mode A, D or M	Remarks
1	Command	CDF C1	All Divisions	151.355		W	159.300	3	A		
2		CDF C7		151.460		W	159.390	2	A		
3	Command	OES 2B	Incident Base	154.220		W	159.195	3	A		Tone 3 - Incident Support
4	Tactical	CDF T9	Div B	151.385		W	151.385		A		
5	Tactical	White 2	Div A	154.265		W	154.265		A		
6	Tactical	White 3	Div. O, N, & T	154.295		W	154.295		A		
7	Tactical	NIFC Tac 1		168.0500		N	168.0500		A		
8	Tactical	NIFC Tac 3	Div. D & J	168.6000		N	168.6000		A		
9	Tactical	NIFC Tac 4	Div. K, L, & M	164.1375		N	164.1375		A		
10	Tactical	NIFC Tac 5	Div. X, Y & Z	166.7250		N	166.7250		A		
11	Calcord	Calcord	All Divisions	156.075		W	156.075		A		Medical
12	Tactical	NIFC Tac 6	Repair	166.7750		N	166.7750		A		Suppression Repair
13	CDF A/G	CDF A/G	All Divisions	151.2200	N	N	151.2200	N	A		Aircraft Hailing
14	Air Guard	Air Guard	All Divisions	168.6250	N	N	168.6250	N	A	110.9	Aircraft Emergency Hailing
15	CalCord	Medical Tactical	All Divisions	156.075		W	156.075		A		All Medical Traffic
16	Air Guard	Air Guard	All Divisions	168.6250	N	N	168.6250	N	A	110.9	Aircraft Emergency Hailing

Prepared by (Communications Unit)
Brian D. Kornegay, COM1

Incident Location Chico, CA
County BTU State CA Latitude Longitude W

The convention calls for frequency lists to show four digits after the decimal place, followed by either an "N" or a "W", depending on whether the frequency is narrow or wide band. Mode refers to either "A" or "D" indicating analog or digital (e.g. Project 25) or "M" indicating mixed mode. All channels are shown as if programmed in a control station, mobile or portable radio. Repeater and base stations must be programmed with the Rx and Tx reversed.

AIR OPERATIONS SUMMARY

1. INCIDENT NAME: HUMBOLDT		2. OPERATIONAL PERIOD							
DATE: 6/17/08	TIME: 0700-2100	SUNRISE:	SUNSET:						
PERSONNEL & COMMUNICATIONS	NAME	AIR/AIR FREQUENCY	AIR/GROUND FREQUENCY						
AIR OPERATIONS DIRECTOR	Dave Junette	151.2875	151.220						
ASGS	Randy Rapp								
HEBWI:									
AIR TANKER COORDINATOR									
AIR ATTACK SUPERVISOR									
HELICOPTER COORDINATOR		RW 129.775							
6. LOCATION/ FUNCTION	7. ASSIGNMENT	8. FIXED WING		9. ROTOR WING		10. TIME		AIRCRAFT ASSIGNED	OPERATING BASE
		NO.	TYPE	NO.	TYPE	AVAILABLE	COMMENT		
	Water Drop			1	II		0830	198HM	Chico
	Helco / Recon			1	III		0830	988B	Chico
		13. TOTALS							
				2					

5. REMARKS (Specific Instructions, Safety Notes, Hazards, Priorities)

- Powerlines in the Area!
- Request Aircraft through Branch.
- Contact Aircraft on A/G then switch

14. AIR OPERATIONS SUPPORT EQUIPMENT: 

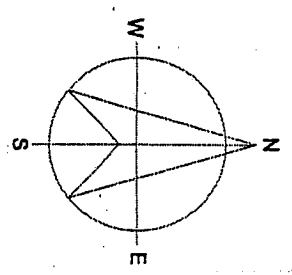
15. PREPARED BY: Dave Junette DATE: 06/16/2008 TIME: 2100

MEDICAL PLAN	1. Incident Name	2. Date Prepared	3. Time Prepared	4. Operational Period				
	Humboldt	6/16/08	1800	6/17/08 0700-0700 Hrs.				
5. Incident Medical Aid Station								
Medical Aid Stations		Location			Paramedics			
					Yes	No		
MERT CCC		Butte College Inc. Base Phone # (530) 310-1457				X		
DMAT / De Mob at 1200hrs		Butte College Inc. Base Phone # (916) 216-4904			PA			
6. Transportation								
A. Ambulance Services								
Name		Address		Phone		Paramedics		
						Yes	No	
First Responder Medics		333 Huss Rd. #100, Chico		911/ BTU ECC		X		
Enloe Medics		1531 Esplanade, Chico		911/ BTU ECC		X		
B. Incident Ambulances								
Name		Location			Paramedics			
					Yes	No		
Enloe Flight Care		1531 Esplanade, Chico			X			
7. Hospitals								
Name	Address	Travel Time		Phone	Helipad		Burn Center	
		Air	Ground		Yes	No	Yes	No
Enloe Hospital	1531 Esplanade, Chico	5	15	911/ BTU ECC	X			X
Oroville Medical Center	2767 Olive Highway, Oroville	5	15	911/ BTU ECC	X			X
Feather River Hospital	5974 Pentz Rd. Paradise	5	15	911/ BTU ECC	X			X
UC Davis Hospital	2315 Stockton Blvd. Sacramento	30		(916) 734-3636			X	
8. Medical Emergency Procedures								
<ul style="list-style-type: none"> - Report all serious injuries to your division supervisor on command net. - Request Air or Ground transportation - Give location (address, GPS), type of injury, and resource needs. - Notify Safety Officer for all significant injuries. - More significant events (i.e. major injury, death, missing person) requires immediate notification to the IC & PIO 								
Prepared by (Medical Unit Leader)					10. Reviewed by (Safety Officer)			
Grayson Magana								

6/16/08 Update

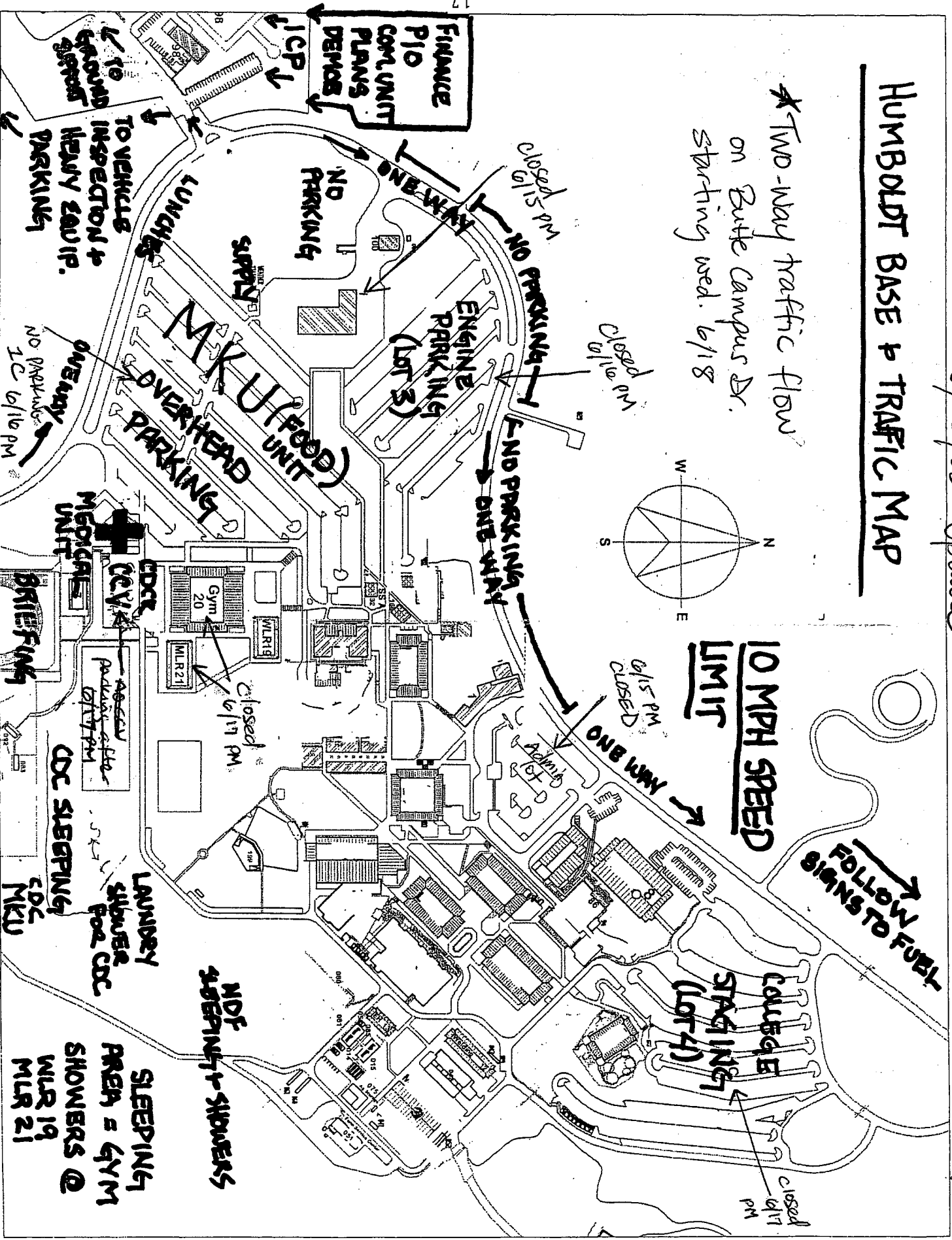
HUMBOLDT BASE & TRAFFIC MAP

* Two-way traffic flow on Butte Campus Dr. starting wed. 6/18



10 MPH SPEED LIMIT

FOLLOW SIGNS TO FUEL



FINANCE P/O COM. UNIT PLANS DEMOS

TO VEHICLES INSPECTOR & HEAVY EQUIP. PARKING

MKU (FOOD) UNIT OVERHEAD PARKING

ENGINE PARKING (LOT 3)

Gym 20 MLR 21

MEDICALS UNIT

CDCR

LAUNDRY SLEEPING SLEEPERS POOL CDC

SLEEPING SLEEPERS SLEEPERS @ MLR 19 MLR 21

COLLEGE STAGING (LOT 4)

closed 6/17 PM

closed 6/15 PM

closed 6/16 PM

6/15 PM closed

closed 6/17 PM

NDF SLEEPING & SLEEPERS

Humboldt Communication PUBLIC Phone List

Incident Commander and Staff

IC
 IC(t)
 Deputy
 Safety Officer
 Information 530-342-3089,5168
 Information Center (CAL FIRE) 530-538-7826
 Liaison 530-342-3168

Operations Section

Agency Representatives

Butte County OES
 Butte County Sheriff 530-518-6030/530-342-4970/530-538-7321
 CHP 530-879-1995
 California OES 530-345-9764
 PG&E / Angie Gibson 800-543-7000 / 707-272-3169
 Butte County DPW
 Paradise Police 530-872-6241
 North Valley Animal Disaster Group 530-895-0000
 Oroville Animal Control 530-538-7409
 Paradise Animal Shelter 530-872-6275

Planning Section 530-345-5294

Chief
 Deputy
 Resource Unit
 Situation Unit 530-899-2867
 Documentation Unit
 Demobilization/Check-In Unit 415-250-1327
 Technical Specialists
 Human Resources
 Training 530-894-2461
 Fire Behavior Analyst 530-949-7719
 GIS Tech
 Hired Equipment
 Meteorologist

Finance Section

Chief
 Time Unit 530-342-3258
 Procurement Unit
 Compensation/Claims Unit 650-740-6450
 Cost Unit

Logistics Section

<p>Chief Kim Price 707-499-9356 Deputy Dawn Pedersen(t) 707-599-6554 Supply Unit 530-342-3175/650-245-0170 Facilities Unit Ground Support Section 530-894-8209 Communications Unit 530-342-5648/530-343-1557 Comm Unit Leader 707-489-3233</p>	<p>Motel 530-524-4909 Ordering 530-343-2156 Food 530-514-3662 (days) Food 530-941-9317(nights) Medical Unit Leader (r 530-518-9688 Medical Unit 530-310-1457</p>
--	---

TRAINING SPECIALIST MESSAGE

Beat the Rush!!

Trainer / Evaluators: If as much work as possible has been completed in the position task book, you are *strongly* encouraged to take advantage of your time in camp and conduct the training close-out with the TNSP.

In order to receive documented credit for your training assignment – you must close out with the Training Specialist prior to Demob!!

Bring the following to the “close-out interview”

- **A completed and signed ICS 225 Performance Evaluation**
 - **A properly documented taskbook**

ICS 225 Forms are available at the TNSP Desk

Tom Reaves
TNSP

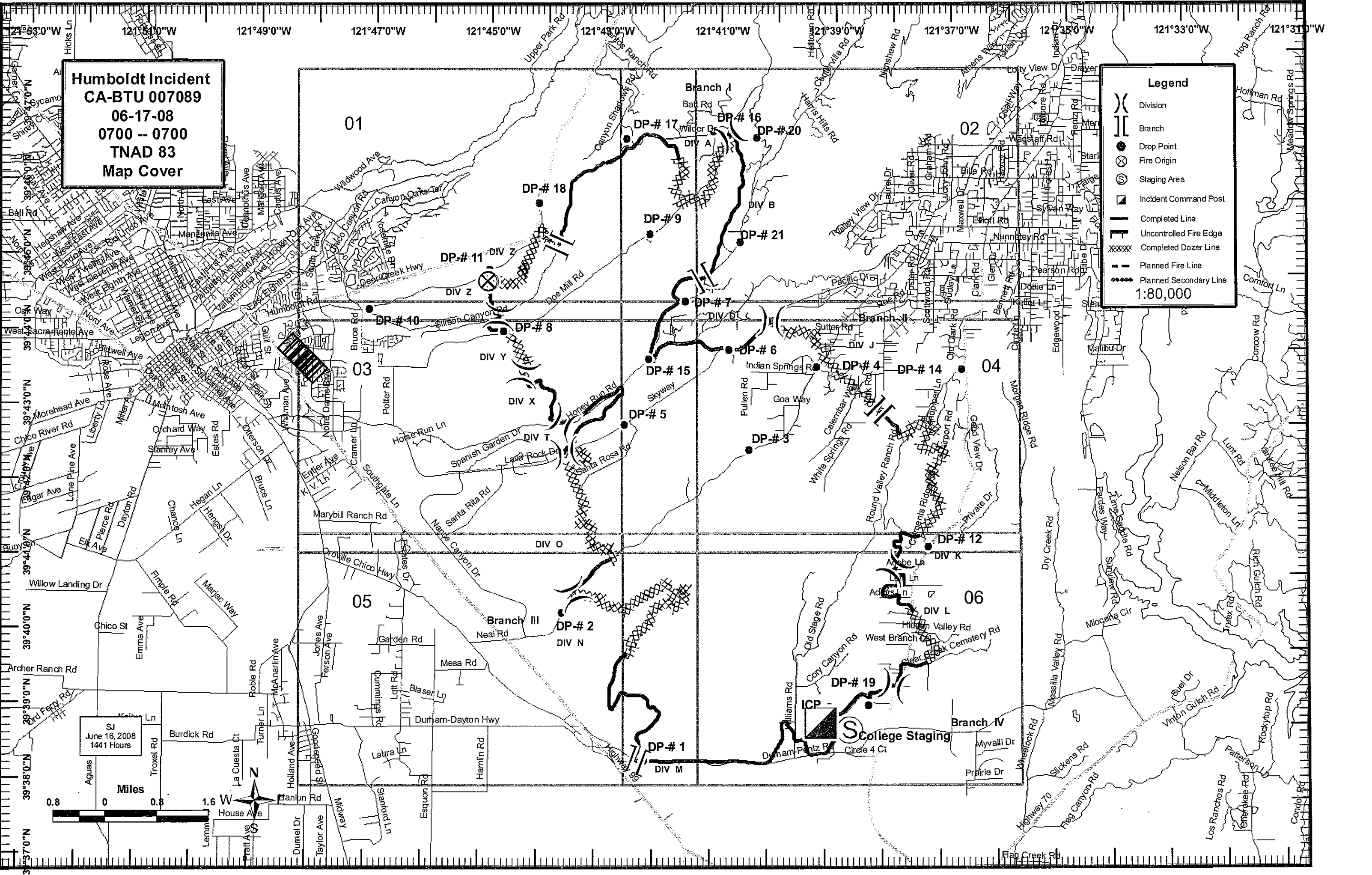
6/17/08

Humboldt Incident
CA-BTU 007089
06-17-08
0700 -- 0700
TNAD 83
Map Cover

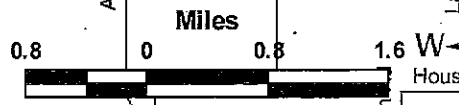
Legend

- (X) Division
- [] Branch
- Drop Point
- ⊗ Fire Origin
- ⊙ Staging Area
- ▣ Incident Command Post
- Completed Line
- Uncontrolled Fire Edge
- XXXXX Completed Dozer Line
- - - Planned Fire Line
- Planned Secondary Line

1:80,000



SJ
 June 16, 2008
 1441 Hours

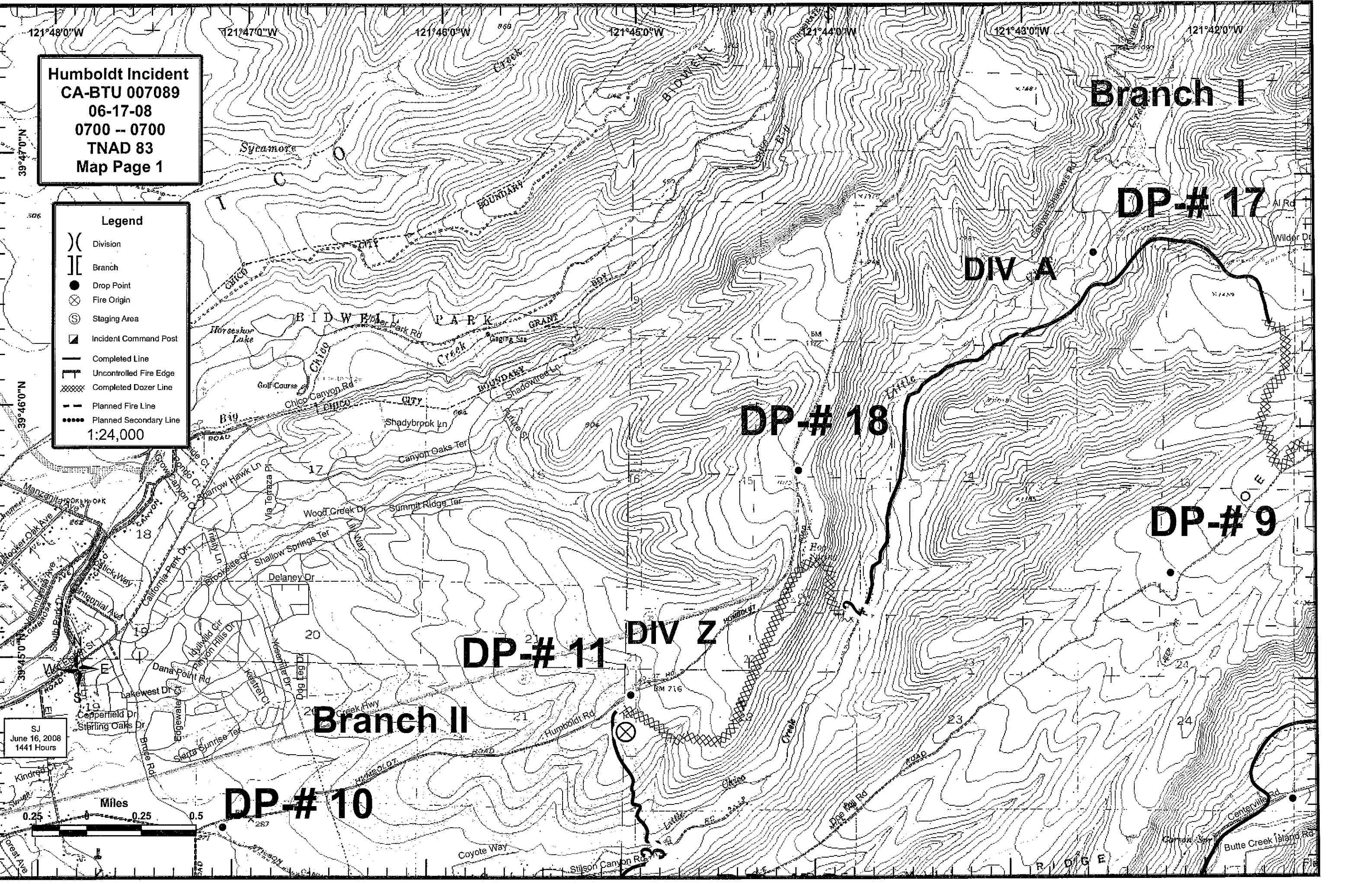


Humboldt Incident
CA-BTU 007089
06-17-08
0700 -- 0700
TNAD 83
Map Page 1

Legend

- () Division
- [] Branch
- Drop Point
- ⊗ Fire Origin
- ⊙ Staging Area
- ▣ Incident Command Post
- Completed Line
- Uncontrolled Fire Edge
- XXXXX Completed Dozer Line
- - - Planned Fire Line
- Planned Secondary Line

1:24,000



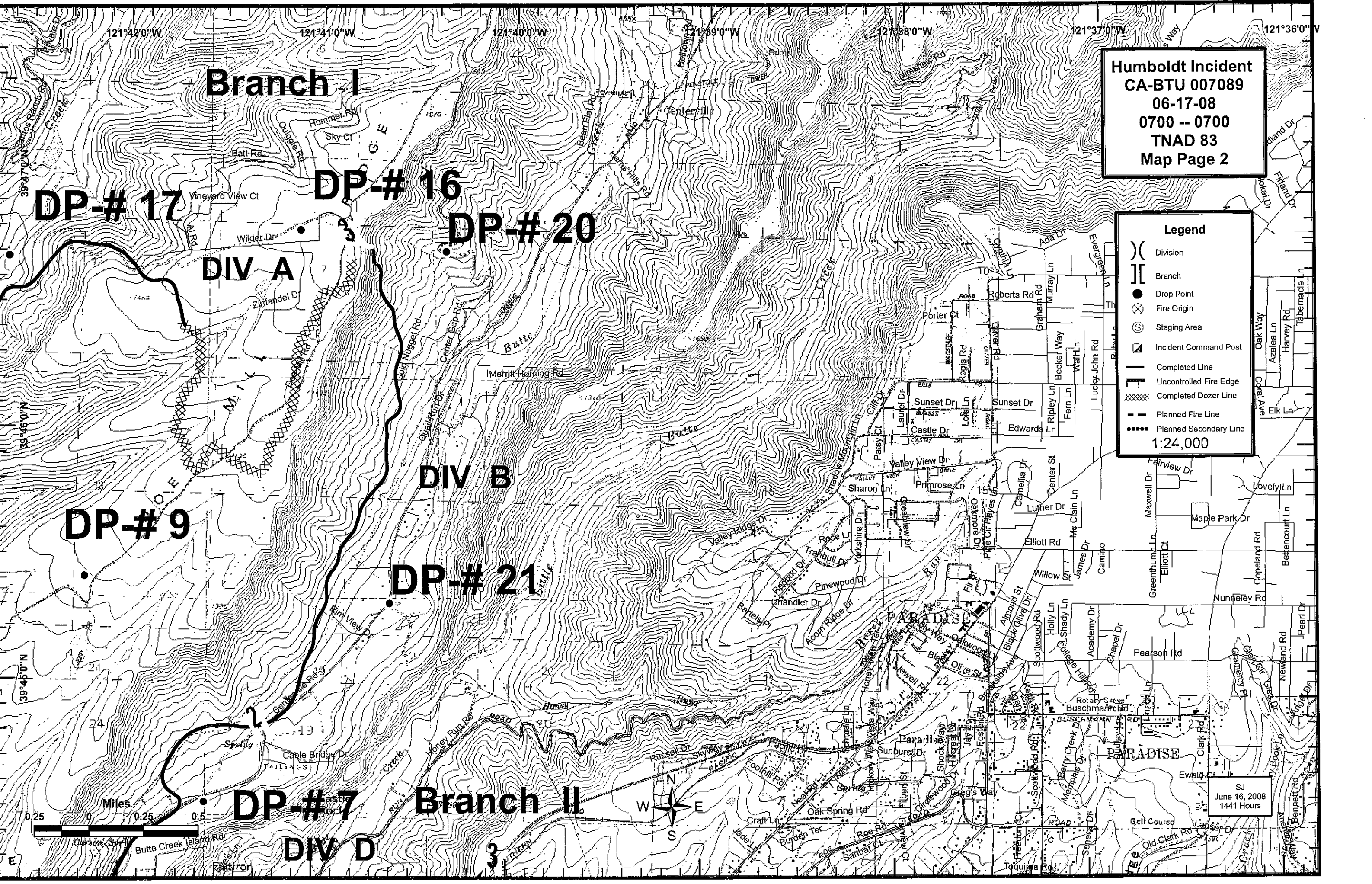
SJ
 June 16, 2008
 1441 Hours

Humboldt Incident
CA-BTU 007089
06-17-08
0700 -- 0700
TNAD 83
Map Page 2

Legend

- Division
- Branch
- Drop Point
- Fire Origin
- Staging Area
- Incident Command Post
- Completed Line
- Uncontrolled Fire Edge
- Completed Dozer Line
- Planned Fire Line
- Planned Secondary Line

1:24,000



SJ
 June 16, 2008
 1441 Hours

Humboldt Incident
CA-BTU 007089
06-17-08
0700 -- 0700
TNAD 83
Map Page 3

Legend

- () Division
- [] Branch
- Drop Point
- ⊗ Fire Origin
- ⊙ Staging Area
- ▣ Incident Command Post
- Completed Line
- ⊥ Uncontrolled Fire Edge
- ⊗ Completed Dozer Line
- - - Planned Fire Line
- ⋯ Planned Secondary Line

1:24,000

DP-# 10

DP-# 8

DP-# 15

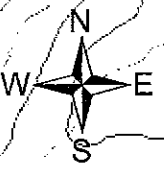
DP-# 5

DIV Y

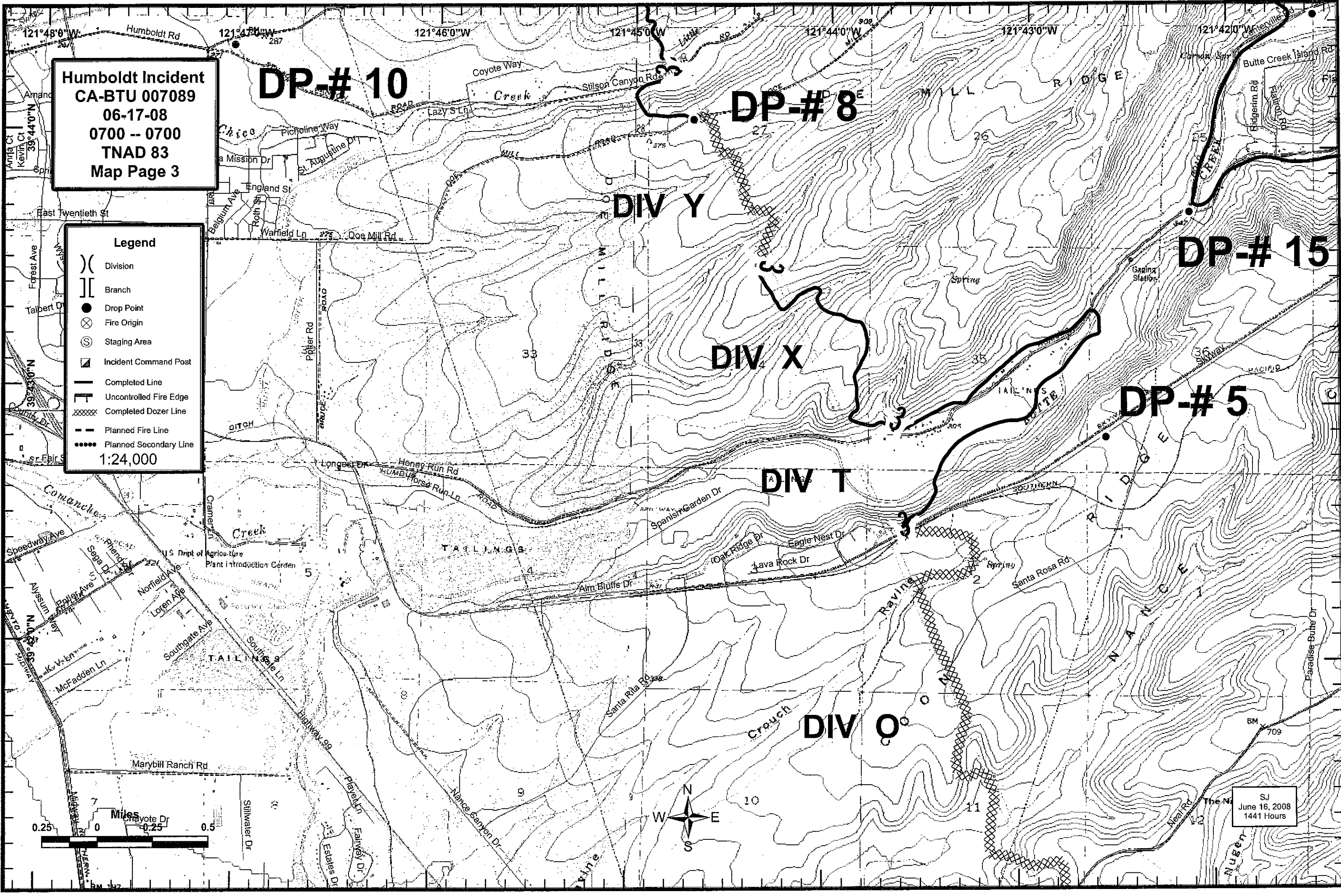
DIV X

DIV T

DIV O



SJ
 June 16, 2008
 1441 Hours

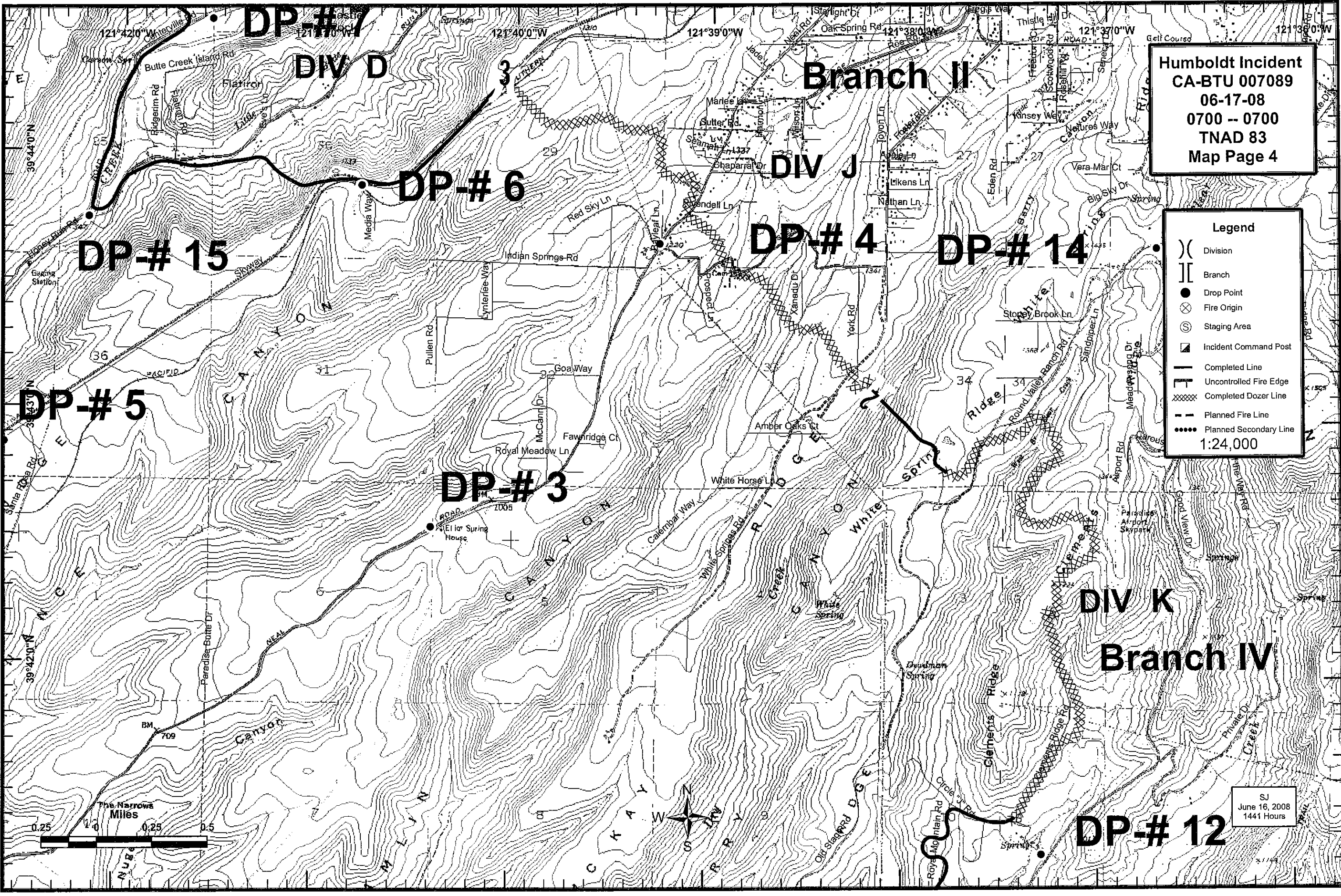


Humboldt Incident
 CA-BTU 007089
 06-17-08
 0700 -- 0700
 TNAD 83
 Map Page 4

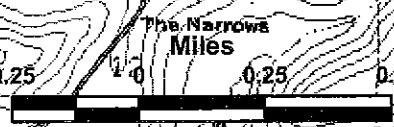
Legend

- () Division
- || Branch
- Drop Point
- ⊗ Fire Origin
- ⊙ Staging Area
- ▣ Incident Command Post
- Completed Line
- Uncontrolled Fire Edge
- XXXXX Completed Dozer Line
- - - Planned Fire Line
- Planned Secondary Line

1:24,000



SJ
 June 16, 2008
 1441 Hours



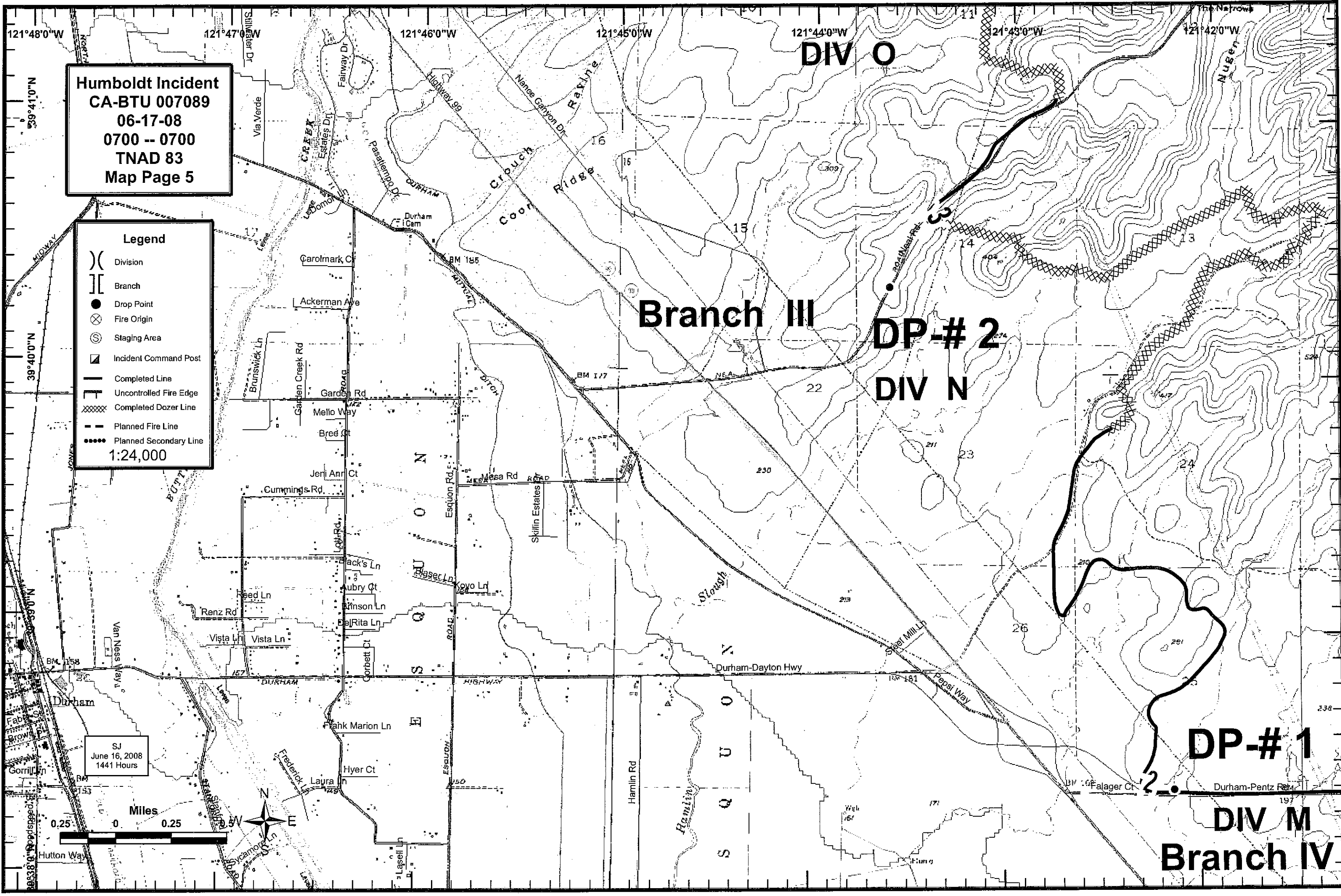
Humboldt Incident
CA-BTU 007089
06-17-08
0700 -- 0700
TNAD 83
Map Page 5

Legend

- () Division
- [] Branch
- Drop Point
- ⊗ Fire Origin
- ⊙ Staging Area
- ▣ Incident Command Post
- Completed Line
- - - Uncontrolled Fire Edge
- XXXXX Completed Dozer Line
- - - Planned Fire Line
- Planned Secondary Line

1:24,000

SJ
 June 16, 2008
 1441 Hours



Branch III

DP-# 2

DIV N

DP-# 1

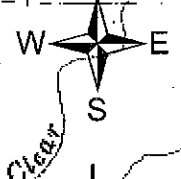
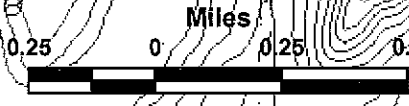
DIV M
Branch IV

Humboldt Incident
CA-BTU 007089
06-17-08
0700 -- 0700
TNAD 83
Map Page 6

Legend

- () Division
- [] Branch
- Drop Point
- ⊗ Fire Origin
- ⊙ Staging Area
- ▣ Incident Command Post
- Completed Line
- ┌ Uncontrolled Fire Edge
- XXXXX Completed Dozer Line
- - - Planned Fire Line
- Planned Secondary Line

1:24,000



DP-# 12
DIV K

DIV L

DP-# 19

ICP

College Staging

Branch IV

DP-# 1

DIV M

SJ
June 16, 2008
1441 Hours

