




HUMBOLDT

INCIDENT ACTION PLAN

BTU007089

June 12, 2008

0700 - 0700

INCIDENT OBJECTIVES	1. Incident Name HUMBOLDT	2. Date June 12, 2008	3. Time 1630 Hours																								
4. Operational Period 0700 to 0700 BTU-7089																											
5. General Control Objectives for the Incident (include alternatives) Control Objectives - <ul style="list-style-type: none"> • Keep fire West of Highway 191 / Clark Road • Keep fire East of Highway 99 • Keep fire South of Highway 32 • Keep fire North of Durham Pentz Management Objectives - <ul style="list-style-type: none"> • Provide for Firefighter and public safety. • Keep public informed. • Assist impacted residents if feasible. • Keep costs commensurate with risk. 																											
6. Weather Forecast for Period **RED FLAG WARNING IN EFFECT TILL THURSDAY AT 5:00 p.m. FOR GUSTY WINDS AND LOW HUMIDITIES* Sunny Maximum Temperatures: Increasing to 88-91 Minimum Humidity's: 8-12% Northwest gusts 12 mph with local gusts to 25 mph by late morning shifting to Northeast																											
7. General Safety Message 1. Be aware of fire weather changes. 2. Review and follow LCES, 18-situations that shout watch out, and 10-fire orders. 3. Conduct tailgate safety meetings with assigned personnel. 4. Watch for power-line hazards and traffic on narrow roads. 5. Protect against heat injuries.																											
8. Attachments (mark if attached) <table border="0" style="width: 100%;"> <tr> <td><input checked="" type="checkbox"/> Organization List - ICS 203</td> <td><input checked="" type="checkbox"/> Incident Maps (separate)</td> <td><input type="checkbox"/></td> </tr> <tr> <td><input checked="" type="checkbox"/> Fire Weather</td> <td><input checked="" type="checkbox"/> Travel Plan</td> <td><input type="checkbox"/></td> </tr> <tr> <td><input checked="" type="checkbox"/> Fire Behavior Forecast</td> <td><input checked="" type="checkbox"/> Training Specialist</td> <td><input type="checkbox"/></td> </tr> <tr> <td><input checked="" type="checkbox"/> Safety Message</td> <td><input checked="" type="checkbox"/> 214 Unit Log</td> <td><input type="checkbox"/></td> </tr> <tr> <td><input checked="" type="checkbox"/> Div. Assignment Lists - ICS 204</td> <td><input type="checkbox"/></td> <td><input type="checkbox"/></td> </tr> <tr> <td><input checked="" type="checkbox"/> Comm. Plan - ICS 205</td> <td><input type="checkbox"/></td> <td><input type="checkbox"/></td> </tr> <tr> <td><input checked="" type="checkbox"/> Medical Plan - ICS 206</td> <td><input type="checkbox"/></td> <td><input type="checkbox"/></td> </tr> <tr> <td><input checked="" type="checkbox"/> Air Operations-ICS 220</td> <td><input type="checkbox"/></td> <td><input type="checkbox"/></td> </tr> </table>				<input checked="" type="checkbox"/> Organization List - ICS 203	<input checked="" type="checkbox"/> Incident Maps (separate)	<input type="checkbox"/>	<input checked="" type="checkbox"/> Fire Weather	<input checked="" type="checkbox"/> Travel Plan	<input type="checkbox"/>	<input checked="" type="checkbox"/> Fire Behavior Forecast	<input checked="" type="checkbox"/> Training Specialist	<input type="checkbox"/>	<input checked="" type="checkbox"/> Safety Message	<input checked="" type="checkbox"/> 214 Unit Log	<input type="checkbox"/>	<input checked="" type="checkbox"/> Div. Assignment Lists - ICS 204	<input type="checkbox"/>	<input type="checkbox"/>	<input checked="" type="checkbox"/> Comm. Plan - ICS 205	<input type="checkbox"/>	<input type="checkbox"/>	<input checked="" type="checkbox"/> Medical Plan - ICS 206	<input type="checkbox"/>	<input type="checkbox"/>	<input checked="" type="checkbox"/> Air Operations-ICS 220	<input type="checkbox"/>	<input type="checkbox"/>
<input checked="" type="checkbox"/> Organization List - ICS 203	<input checked="" type="checkbox"/> Incident Maps (separate)	<input type="checkbox"/>																									
<input checked="" type="checkbox"/> Fire Weather	<input checked="" type="checkbox"/> Travel Plan	<input type="checkbox"/>																									
<input checked="" type="checkbox"/> Fire Behavior Forecast	<input checked="" type="checkbox"/> Training Specialist	<input type="checkbox"/>																									
<input checked="" type="checkbox"/> Safety Message	<input checked="" type="checkbox"/> 214 Unit Log	<input type="checkbox"/>																									
<input checked="" type="checkbox"/> Div. Assignment Lists - ICS 204	<input type="checkbox"/>	<input type="checkbox"/>																									
<input checked="" type="checkbox"/> Comm. Plan - ICS 205	<input type="checkbox"/>	<input type="checkbox"/>																									
<input checked="" type="checkbox"/> Medical Plan - ICS 206	<input type="checkbox"/>	<input type="checkbox"/>																									
<input checked="" type="checkbox"/> Air Operations-ICS 220	<input type="checkbox"/>	<input type="checkbox"/>																									
9. Prepared by (Planning Section Chief) Terrie Ridenhour (PSC-Trainee)		10. Approved by (Incident Commander) Mike Howe 																									

ORGANIZATION ASSIGNMENT LIST	
1. Incident Name	
HUMBOLDT	
2. Date	3. Time
6-12-2008	1630-Hours
4. Operational Period	
0700-0700	
Position	Name
5. Incident Commander and Staff	
Incident Commander	Bob Wallen/Mike Howe (T)/Ron Myers (T)
Deputy	Mark Reina
Safety Officer	Scott Upton / Dave Munch
Information Officer	Kevin Colburn / Janet Upton
Liaison Officer	Jeff Turpstra
6. Agency Representative	
Agency	Name
Butte Co. OES	Steve Weston
Butte Co Sheriff Office	Sgt. Al Smith
CHP	Scott Gillingwater
Cal OES	Dan Tinner
PG&E	Brad Boyes
Butte Co DPW	Mike Crump
7. Planning Section	
Chief	Scott Jalbert
Deputy	Dan Hall / Terrie Ridenhour(T)
Resources Unit	Jeff Schimke / Mike Santuccio (T)/Linda Green
Situation Unit	Helge Eng / Paul Medeiros
Documentation Unit	
Demobilization Unit	Karie Tidwell
Technical Specialists	
Human Resources	
Training	Tom Reaves
Fban	Andy Reiling
GIS Tech	Monty Messenger
Hired Equip	Jason Morris
8. Logistics Section	
Chief	Kim Price / Dawn Pedersen (T)
Deputy	
Supply Unit	Scott Ernest
Facilities Unit	Remy Hancock
Ground Support Unit	Danny Sykes
Communications Unit	Brian Kornegay
Medical Unit	
Motel	Jeffrey Burrows
Ordering	Adam Matfos

9. Operations Section	
Chief	Day Ops Jim Sweet / Jerry Burke
Deputy	Night Ops Steve Emerick
a. Branch I- Division/Groups	
Branch Director	Darrel Wolf
Deputy	
Division/Group	A TBA
Division/Group	B TBA
Division/Group	C Charles Blankenheim
Division/Group	D Albert Savage
Division/Group	
b. Branch II - Division/Groups	
Branch Director	Jack Lefort
Deputy	
Division/Group	J Mike Shorrock
Division/Group	T Scott Wood
Division/Group	
Division/Group	
Division/Group	
c. Branch III - Division/Groups	
Branch Director	Dave Roberts
Deputy	
Division/Group	X Christopher Post / Krishan Timberlake(T)
Division/Group	Y TBA
Division/Group	Z TBA
Division/Group	
Silver Stagng	TBA
d. Air Operations Branch	
Air Operations Branch Director	David Junette
Air Attack Supervisor	
Air Support Supervisor	Randy Rapp
Helicopter Coordinator	
Air Tanker Coordinator	
10. Finance Section	
Chief	Vance Moulton
Deputy	
Time Unit	Denise Ehnaf
Procurement Unit	Michael Borelli
Compensation/Claims Unit	John Owens
Cost Unit	Phil Anso
Prepared by (Resource Unit Leader)	
Terrie Ridenhour (PSC-T) For Jeff Schimke	

FORECAST IS BASED ON REQUEST TIME OF 1632 PDT ON JUNE 11.

IF CONDITIONS BECOME UNREPRESENTATIVE...CONTACT THE NATIONAL WEATHER SERVICE.

...RED FLAG WARNING IN EFFECT UNTIL 5 PM PDT THURSDAY...

.DISCUSSION

STRONG SUSTAINED NORTHWEST WINDS WILL CONTINUE THIS EVENING WITH A GRADUAL DECREASE JUST AFTER SUNSET. THEN WINDS WILL SHIFT FROM NORTHEAST TONIGHT AND GRADUALLY INCREASE OVERNIGHT. THE SLOWEST WINDS WILL BE NEAR AND JUST AFTER SUNRISE BEFORE DIURNAL WINDS TAKE OVER THURSDAY. LOW HUMIDITY LEVELS WILL PERSIST THROUGH THURSDAY NIGHT.

.THURSDAY

MIN HUMIDITY.....10-15 PERCENT.

WIND (20 FT).....

SLOPE/VALLEY....NORTHEAST WINDS 6 TO 10 MPH WITH GUSTS TO 15 MPH
NEAR SUNRISE BECOMING VARIABLE 2 TO 5 MPH
THROUGH 800 AM THEN SHIFTING NORTHWEST 5 TO 9 MPH.

SKY/WEATHER.....SUNNY.


MAX TEMPERATURE.....90-95.

MIXING HEIGHT.....LESS THAN 500 FT AGL INCREASING TO 9000-10000 FT
AGL.

MIXING WINDS.....NORTH 6 TO 10 MPH.

FORECASTER...JCLAPP

FIRE BEHAVIOR FORECAST

FORECAST NUMBER: 01	TYPE OF FIRE: Wild land
FIRE NAME: Humboldt	OPERATIONAL PERIOD: 6-12-08 0700-0700
DATE ISSUED: 6-11-08	TIME ISSUED: 1800
UNIT: Butte	SIGNED:  Typed/printed: Andy Reiling FBAN (T)

INPUTS

WEATHER SUMMARY: RED FLAG WARNING UNTIL 5:00pm Thursday
FOR GUSTY WINDS AND LOW HUMIDITIES

Today: Clear sunny skies, Maximum temperature 90-95° Minimum Relative Humidity 10-15%
Slope and Valley eye level Winds Northwest 5 to 9 mph.
Low level humidity's will persist through Thursday night.

Tonight: Clear skies, Minimum temperature 55-65° Maximum Relative Humidity 27-45%
Winds Valley and Slope NE eyelevel wind 4-6mph gust to 10mph and Canyon winds 5-7mph
gust to 12 mph

OUTPUTS

FIRE BEHAVIOR

GENERAL: The fire is burning in several major drainages. Terrain is flat to vertical escarpments. The fire is burning in grass oak land with gray pine and heavy brush pockets. The area has been under a red flag warning for the last 48+hours. Fine dead fuels are at 3% with dead a down fuel at or close to record lows for this time of year. The brush is making sustained runs when there is a dead fuel loading combined with wind and/or slope. Probability of Ignition 88.

Specific:

Optimal Forward Rates of Spread in the **oak wood and grass** will be 40-60 chains an hour with 7-9' flame lengths. Flanking fire Rate of Spread will be 4-5 chains per hour with flame lengths of 1-3'. Backing Rates of Spread will be 1-3 with 1-2' flame lengths. Spotting distances up to 1/3 of a mile.

Optimal forward rate of spread in **brush** will be 80-120 chains an hour with 20-25 flame lengths. Flanking fire spread will be 7-8 chains an hour with flame lengths of 6-7'. Backing fire rate of spread will be 2-4 with flame lengths of 3-5' spotting increases to 1/2 mile.

AIR OPERATIONS:

Smoky conditions in the drainages early in the morning as the winds subside and become variable. As winds pick-up, turbulence will increase. Power lines are in the immediate area.

SAFETY

Trees are stressed by the fire, wind and drought. Survey your surroundings as you enter. Watch your footing near the escarpments. Communicate with crews working below you.

SAFETY MESSAGE

INCIDENT NAME
HUMBOLDT
CA BTU-7089

DATE PREPARED
06-12-2008

TIME PREPARED
2300

OPERATIONAL PERIOD June 12, 2008 0700 - 0700

**WHEN IT COMES TO SAFETY: THE ONLY THING WORSE
THAN BEING OBLIVIOUS TO THE UNKNOWN IS IGNORING
THE OBVIOUS...**

Time and time again, the failures to adhere to the fundamentals of firefighter safety are resulting in the direct contribution of serious injuries or the needless loss of a firefighter! We train for the real thing; We plan for the real thing. But do we understand how to provide for safety first, before we aggressively fight the real thing?

Hazards

Power lines: Be aware of the potential for re-energized power lines in your immediate work area.

Traffic: Citizens maybe in the fire area and may pose additional traffic issues.

Extreme fire weather equals the potential for extreme fire behavior. Be prepared for flare ups and new starts.

Fatigue can become a safety issue for all of us. Be sure to utilize good work-rest cycles.

Use extreme caution near steep terrain and natural chimneys.

JOIN THE HYDRATION NATION!!!! Have a drink on us...

- **Brief your crews on all components of the IAP**
- **Continually monitor your crews for sign & symptoms of heat illness**
- **Insure your crews are well hydrated and are provide rest breaks**
- **Personal Monitoring:**
 - **Keep track of your urine output**
 - **Monitor your core temperature and pulse rate**
 - **Drink 8 ounces of water every 15 minutes**

Prepared By:

By Mark Han
SOF 1

Approved By (Safety Officer, ICT #2)

Incident Safety Officer, Scott Upton

DIVISION ASSIGNMENT LIST		1. Branch I		2. Division/Group A			
3. Incident Name HUMBOLDT		4. Operational Period Date: June 12, 2008 Time: 0700-0700					
5. Operations Personnel							
Operations Chief		Jim Sweet/Jerry Burke (Day) Steve Emerick (Night)		Division/Group Supervisor		TBA	
Branch Director		Darrell Wolf		Air Attack Supervisor No.		Dave Junette/Randy Rapp	
6. Resources Assigned this Period							
Strike Team/Task Force/ Resource Designator		Leader		Number Persons	Trans. Needed	Drop Off PT./Time	Pick Up PT./Time
ST C						DP 11/0700	DP 11/0700
ST G						DP 11/0700	DP 11/0700
SR WT						DP 11/0700	DP 11/0700
SR WT						DP 11/0700	DP 11/0700
7. Control Operations Build and hold line. Mop up and patrol.							
8. Special Instructions							
9. Division/Group Communication Summary							
Function	Frequency	System	Channel	Function	Frequency	System	Channel
Command	RX 151.355 TX 159.300	King NIFC	CDF CMD 1 CHANNEL 1	Logistics	RX 154.220 TX 159.195	King NIFC	OES 2B CHANNEL 3
Tactical Div/Group	RX/TX 151.385	King NIFC	CDF TAC 9 CHANNEL 4	Air to Ground	RX/TX 151.2200	King NIFC	CDF A/G CHANNEL 13
Prepared by (Resource Unit Ldr.) LINDA GREEN/MIKE SANTUCCIO			Approved by (Planning Sect. Ch.) SCOTTY JALBERT			Date June 11, 2008	Time 2400

DIVISION ASSIGNMENT LIST		1. Branch I		2. Division/Group B			
3. Incident Name HUMBOLDT		4. Operational Period Date: June 12, 2008 Time: 0700-0700					
5. Operations Personnel							
Operations Chief	Jim Sweet/Jerry Burke (Day) Steve Emerick (Night)		Division/Group Supervisor	TBA			
Branch Director	Darrell Wolf		Air Attack Supervisor No.	Dave Junette/Randy Rapp			
6. Resources Assigned this Period							
Strike Team/Task Force/ Resource Designator	Leader	Number Persons	Trans. Needed	Drop Off PT./Time	Pick Up PT./Time		
SR ENG				DP 9/0700	DP 9/0700		
SR ENG				DP 9/0700	DP 9/0700		
SR ENG				DP 9/0700	DP 9/0700		
ST G				DP 9/0700	DP 9/0700		
ST G				DP 9/0700	DP 9/0700		
ST G				DP 9/0700	DP 9/0700		
ST G				DP 9/0700	DP 9/0700		
DOZ 2544				DP 9/0700	DP 9/0700		
7. Control Operations Build and hold line. Mop up and patrol.							
8. Special Instructions							
9. Division/Group Communication Summary							
Function	Frequency	System	Channel	Function	Frequency	System	Channel
Command	RX 151.355 TX 159.300	King NIFC	CDF CMD 1 CHANNEL 1	Logistics	RX 154.220 TX 159.195	King NIFC	OES 2B CHANNEL 3
Tactical Div/Group	RX/TX 151.385	King NIFC	CDF TAC 9 CHANNEL 4	Air to Ground	RX/TX 151.2200	King NIFC	CDF A/G CHANNEL 13
Prepared by (Resource Unit Ldr.) LINDA GREEN/MIKE SANTUCCIO		Approved by (Planning Sect. Ch.) SCOTTY JALBERT		Date June 11, 2008		Time 2400	

DIVISION ASSIGNMENT LIST		1. Branch I		2. Division/Group C			
3. Incident Name HUMBOLDT		4. Operational Period Date: June 12, 2008 Time: 0700-0700					
5. Operations Personnel							
Operations Chief	Jim Sweet/Jerry Burke (Day) Steve Emerick (Night)		Division/Group Supervisor	Charles Blankenheim			
Branch Director	Darrell Wolf		Air Attack Supervisor No.	Dave Junette/Randy Rapp			
6. Resources Assigned this Period							
Strike Team/Task Force/ Resource Designator	Leader	Number Persons	Trans. Needed	Drop Off PT./Time	Pick Up PT./Time		
ST 3025-C				DP 9/0700	DP 9/0700		
ST G				DP 9/0700	DP 9/0700		
ST G				DP 9/0700	DP 9/0700		
7. Control Operations Build and hold line. Mop up and patrol.							
8. Special Instructions							
9. Division/Group Communication Summary							
Function	Frequency	System	Channel	Function	Frequency	System	Channel
Command	RX 151.355 TX 159.300	King NIFC	CDF CMD 1 CHANNEL 1	Logistics	RX 154.220 TX 159.195	King NIFC	OES 2B CHANNEL 3
Tactical Div/Group	RX/TX 154.295	King NIFC	WHITE 3 CHANNEL 6	Air to Ground	RX/TX 151.2200	King NIFC	CDF A/G CHANNEL 13
Prepared by (Resource Unit Ldr.) LINDA GREEN/MIKE SANTUCCIO		Approved by (Planning Sect. Ch.) SCOTTY JALBERT		Date June 11, 2008		Time 2400	

DIVISION ASSIGNMENT LIST		1. Branch I		2. Division/Group D			
3. Incident Name HUMBOLDT		4. Operational Period Date: June 12, 2008 Time: 0700-0700					
5. Operations Personnel							
Operations Chief	Jim Sweet/Jerry Burke (Day) Steve Emerick (Night)		Division/Group Supervisor	Albert Savage			
Branch Director	Darrell Wolf		Air Attack Supervisor No.	Dave Junette/Randy Rapp			
6. Resources Assigned this Period							
Strike Team/Task Force/ Resource Designator	Leader	Number Persons	Trans. Needed	Drop Off PT./Time	Pick Up PT./Time		
ST 2801-A				DP 7/0700	DP 7/0700		
ST 4276-C				DP 7/0700	DP 7/0700		
ST G				DP 7/0700	DP 7/0700		
ST G				DP 7/0700	DP 7/0700		
ST G				DP 7/0700	DP 7/0700		
PVT WT LEACH (E-50)				DP 7/0700	DP 7/0700		
SR WT				DP 7/0700	DP 7/0700		
FALC				DP 7/0700	DP 7/0700		
FALC				DP 7/0700	DP 7/0700		
7. Control Operations Build and hold line. Mop up and patrol.							
8. Special Instructions							
9. Division/Group Communication Summary							
Function	Frequency	System	Channel	Function	Frequency	System	Channel
Command	RX 151.355 TX 159.300	King NIFC	CDF CMD 1 CHANNEL 1	Logistics	RX 154.220 TX 159.195	King NIFC	OES 2B CHANNEL 3
Tactical Div/Group	RX/TX 168.0500	King NIFC	NIFC TAC 1 CHANNEL 7	Air to Ground	RX/TX 151.2200	King NIFC	CDF A/G CHANNEL 13
Prepared by (Resource Unit Ldr.) LINDA GREEN/MIKE SANTUCCIO		Approved by (Planning Sect. Ch.) SCOTTY JALBERT		Date June 11, 2008		Time 2400	

DIVISION ASSIGNMENT LIST		1. Branch II		2. Division/Group J (PAGE 1 OF 2)			
3. Incident Name HUMBOLDT		4. Operational Period Date: June 12, 2008 Time: 0700-0700					
5. Operations Personnel							
Operations Chief	Jim Sweet/Jerry Burke (Day) Steve Emerick (Night)		Division/Group Supervisor	Mike Shorrock			
Branch Director	Jack Lefort		Air Attack Supervisor No.	Dave Junette/Randy Rapp			
6. Resources Assigned this Period							
Strike Team/Task Force/ Resource Designator	Leader	Number Persons	Trans. Needed	Drop Off PT./Time	Pick Up PT./Time		
ST 3800-A				DP 3/0700	DP 3/0700		
ST 4225-C				DP 3/0700	DP 3/0700		
ST 9110-C				DP 3/0700	DP 3/0700		
ST G				DP 3/0700	DP 3/0700		
ST G				DP 3/0700	DP 3/0700		
ST G				DP 3/0700	DP 3/0700		
ST G				DP 3/0700	DP 3/0700		
ST G				DP 3/0700	DP 3/0700		
ST G				DP 3/0700	DP 3/0700		
ST G				DP 3/0700	DP 3/0700		
7. Control Operations Build and hold line. Mop up and patrol.							
8. Special Instructions							
9. Division/Group Communication Summary							
Function	Frequency	System	Channel	Function	Frequency	System	Channel
Command	RX 151.355 TX 159.300	King NIFC	CDF CMD 1 CHANNEL 1	Logistics	RX 154.220 TX 159.195	King NIFC	OES 2B CHANNEL 3
Tactical Div/Group	RX/TX 168.6000	King NIFC	NIFC TAC 3 CHANNEL 8	Air to Ground	RX/TX 151.2200	King NIFC	CDF A/G CHANNEL 13
Prepared by (Resource Unit Ldr.) LINDA GREEN/MIKE SANTUCCIO		Approved by (Planning Sect. Ch.) SCOTTY JALBERT		Date June 11, 2008		Time 2400	

DIVISION ASSIGNMENT LIST		1. Branch II		2. Division/Group J (PAGE 2 OF 2)			
3. Incident Name HUMBOLDT		4. Operational Period Date: June 12, 2008 Time: 0700-0700					
5. Operations Personnel							
Operations Chief	Jim Sweet/Jerry Burke (Day) Steve Emerick (Night)		Division/Group Supervisor	Mike Shorrock			
Branch Director	Jack Lefort		Air Attack Supervisor No.	Dave Junette/Randy Rapp			
6. Resources Assigned this Period							
Strike Team/Task Force/ Resource Designator	Leader	Number Persons	Trans. Needed	Drop Off PT./Time	Pick Up PT./Time		
ST 9260-L				DP 3/0700	DP 3/0700		
ST L				DP 3/0700	DP 3/0700		
ST L				DP 3/0700	DP 3/0700		
PVT WT O'COY (E-47)				DP 3/0700	DP 3/0700		
PVT WT ROCHLITZ (E-49)				DP 3/0700	DP 3/0700		
SR WT				DP 3/0700	DP 3/0700		
SR WT				DP 3/0700	DP 3/0700		
SR WT				DP 3/0700	DP 3/0700		
SR WT				DP 3/0700	DP 3/0700		
SR WT				DP 3/0700	DP 3/0700		
SR WT				DP 3/0700	DP 3/0700		
7. Control Operations Build and hold line. Mop up and patrol.							
8. Special Instructions							
9. Division/Group Communication Summary							
Function	Frequency	System	Channel	Function	Frequency	System	Channel
Command	RX 151.355 TX 159.300	King NIFC	CDF CMD 1 CHANNEL 1	Logistics	RX 154.220 TX 159.195	King NIFC	OES 2B CHANNEL 3
Tactical Div/Group	RX/TX 168.6000	King NIFC	NIFC TAC 3 CHANNEL 8	Air to Ground	RX/TX 151.2200	King NIFC	CDF A/G CHANNEL 13
Prepared by (Resource Unit Ldr.) LINDA GREEN/MIKE SANTUCCIO		Approved by (Planning Sect. Ch.) SCOTTY JALBERT		Date June 11, 2008		Time 2400	

DIVISION ASSIGNMENT LIST		1. Branch II		2. Division/Group T			
3. Incident Name HUMBOLDT		4. Operational Period Date: June 12, 2008 Time: 0700-0700					
5. Operations Personnel							
Operations Chief	Jim Sweet/Jerry Burke (Day) Steve Emerick (Night)		Division/Group Supervisor	Scott Wood			
Branch Director	Jack Lefort		Air Attack Supervisor No.	Dave Junette/Randy Rapp			
6. Resources Assigned this Period							
Strike Team/Task Force/ Resource Designator	Leader	Number Persons	Trans. Needed	Drop Off PT./Time	Pick Up PT./Time		
ST 3801-A				DP 5/0700	DP 5/0700		
ST 4026-C				DP 5/0700	DP 5/0700		
ST G				DP 5/0700	DP 5/0700		
ST G				DP 5/0700	DP 5/0700		
ST G				DP 5/0700	DP 5/0700		
ST G				DP 5/0700	DP 5/0700		
ST L				DP 5/0700	DP 5/0700		
ST L				DP 5/0700	DP 5/0700		
ST L				DP 5/0700	DP 5/0700		
PVT WT OILAR (E-51)				DP 5/0700	DP 5/0700		
SR WT				DP 5/0700	DP 5/0700		
SR WT				DP 5/0700	DP 5/0700		
7. Control Operations Build and hold line. Mop up and patrol.							
8. Special Instructions							
9. Division/Group Communication Summary							
Function	Frequency	System	Channel	Function	Frequency	System	Channel
Command	RX 151.355 TX 159.300	King NIFC	RX 151.355 TX 159.300	Logistics	RX 154.220 TX 159.195	King NIFC	OES 2B CHANNEL 3
Tactical Div/Group	RX/TX 164.1375	King NIFC	NIFC TAC 4 CHANNEL 9	Air to Ground	RX/TX 151.2200	King NIFC	CDF A/G CHANNEL 13
Prepared by (Resource Unit Ldr.) LINDA GREEN/MIKE SANTUCCIO		Approved by (Planning Sect. Ch.) SCOTTY JALBERT		Date June 11, 2008		Time 2400	

DIVISION ASSIGNMENT LIST		1. Branch III		2. Division/Group X			
3. Incident Name HUMBOLDT		4. Operational Period Date: June 12, 2008 Time: 0700-0700					
5. Operations Personnel							
Operations Chief	Jim Sweet/Jerry Burke (Day) Steve Emerick (Night)		Division/Group Supervisor	Christopher Post/Krishan Timberlake (T)			
Branch Director	Dave Roberts		Air Attack Supervisor No.	Dave Junette/Randy Rapp			
6. Resources Assigned this Period							
Strike Team/Task Force/ Resource Designator	Leader	Number Persons	Trans. Needed	Drop Off PT./Time	Pick Up PT./Time		
ST 3150-B				TBD/0700	TBD/0700		
ST 4015-C				TBD/0700	TBD/0700		
ST G				TBD/0700	TBD/0700		
ST G				TBD/0700	TBD/0700		
ST G				TBD/0700	TBD/0700		
ST 9128-L				TBD/0700	TBD/0700		
PVT WT (E-52)				TBD/0700	TBD/0700		
SR WT				TBD/0700	TBD/0700		
SOFR				TBD/0700	TBD/0700		
FOBS				TBD/0700	TBD/0700		
7. Control Operations Build and hold line. Mop up and patrol.							
8. Special Instructions							
9. Division/Group Communication Summary							
Function	Frequency	System	Channel	Function	Frequency	System	Channel
Command	RX 151.355 TX 159.300	King NIFC	CDF CMD 1 CHANNEL 1	Logistics	RX 154.220 TX 159.195	King NIFC	OES 2B CHANNEL 3
Tactical Div/Group	RX/TX 166.7250	King NIFC	NIFC TAC 5 CHANNEL 10	Air to Ground	RX/TX 151.2200	King NIFC	CDF A/G CHANNEL 13
Prepared by (Resource Unit Ldr.) LINDA GREEN/MIKE SANTUCCIO		Approved by (Planning Sect. Ch.) SCOTTY JALBERT		Date June 11, 2008		Time 2400	

DIVISION ASSIGNMENT LIST		1. Branch III		2. Division/Group Y			
3. Incident Name HUMBOLDT		4. Operational Period Date: June 12, 2008 Time: 0700-0700					
5. Operations Personnel							
Operations Chief	Jim Sweet/Jerry Burke (Day) Steve Emerick (Night)		Division/Group Supervisor	TBA			
Branch Director	Dave Roberts		Air Attack Supervisor No.	Dave Junette/Randy Rapp			
6. Resources Assigned this Period							
Strike Team/Task Force/ Resource Designator	Leader	Number Persons	Trans. Needed	Drop Off PT./Time	Pick Up PT./Time		
ST 4075-C				DP 8/0700	DP 8/0700		
ST 4226-C				DP 8/0700	DP 8/0700		
ST C				DP 8/0700	DP 8/0700		
ST C				DP 8/0700	DP 8/0700		
ST G				DP 8/0700	DP 8/0700		
ST G				DP 8/0700	DP 8/0700		
ST G				DP 8/0700	DP 8/0700		
ST G				DP 8/0700	DP 8/0700		
ST L				DP 8/0700	DP 8/0700		
SR WT				DP 8/0700	DP 8/0700		
SR WT				DP 8/0700	DP 8/0700		
SR WT				DP 8/0700	DP 8/0700		
SR WT				DP 8/0700	DP 8/0700		
SOFR				DP 8/0700	DP 8/0700		
FOBS				DP 8/0700	DP 8/0700		
7. Control Operations Build and hold line. Mop up and patrol.							
8. Special Instructions							
9. Division/Group Communication Summary							
Function	Frequency	System	Channel	Function	Frequency	System	Channel
Command	RX 151.355 TX 159.300	King NIFC	CDF CMD 1 CHANNEL 1	Logistics	RX 154.220 TX 159.195	King NIFC	OES 2B CHANNEL 3
Tactical Div/Group	RX/TX 154.265	King NIFC	WHITE 1 CHANNEL 5	Air to Ground	RX/TX 151.2200	King NIFC	CDF A/G CHANNEL 13
Prepared by (Resource Unit Ldr.) LINDA GREEN/MIKE SANTUCCIO		Approved by (Planning Sect. Ch.) SCOTT JALBERT		Date June 11, 2008		Time 2400	

DIVISION ASSIGNMENT LIST		1. Branch III		2. Division/Group Z			
3. Incident Name HUMBOLDT		4. Operational Period Date: June 12, 2008 Time: 0700-0700					
5. Operations Personnel							
Operations Chief	Jim Sweet/Jerry Burke (Day) Steve Emerick (Night)		Division/Group Supervisor	TBA			
Branch Director	Dave Roberts	Air Attack Supervisor No.	Dave Junette/Randy Rapp				
6. Resources Assigned this Period							
Strike Team/Task Force/ Resource Designator	Leader	Number Persons	Trans. Needed	Drop Off PT./Time	Pick Up PT./Time		
SR ENG				DP 11/0700	DP 11/0700		
SR ENG				DP 11/0700	DP 11/0700		
SR ENG				DP 11/0700	DP 11/0700		
ST G				DP 11/0700	DP 11/0700		
SR WT				DP 11/0700	DP 11/0700		
SR WT				DP 11/0700	DP 11/0700		
SR WT				DP 11/0700	DP 11/0700		
7. Control Operations Build and hold line. Mop up and patrol.							
8. Special Instructions							
9. Division/Group Communication Summary							
Function	Frequency	System	Channel	Function	Frequency	System	Channel
Command	RX 151.355 TX 159.300	King NIFC	CDF CMD 1 CHANNEL 1	Logistics	RX 154.220 TX 159.195	King NIFC	OES 2B CHANNEL 3
Tactical Div/Group	RX/TX 154.265	King NIFC	WHITE 1 CHANNEL 5	Air to Ground	RX/TX 151.2200	King NIFC	CDF A/G CHANNEL 13
Prepared by (Resource Unit Ldr.) LINDA GREEN/MIKE SANTUCCIO		Approved by (Planning Sect. Ch.) SCOTTY JALBERT		Date June 11, 2008		Time 2400	

DIVISION ASSIGNMENT LIST		1. Branch		2. Division/Group SILVER STAGING			
3. Incident Name HUMBOLDT		4. Operational Period Date: June 12, 2008 Time: 0700-0700					
5. Operations Personnel							
Operations Chief	Jim Sweet/Jerry Burke (Day) Steve Emerick (Night)		Staging Area Manager	Finkenkeller/Bowersox			
Branch Director			Air Attack Supervisor No.	Dave Junette/Randy Rapp			
6. Resources Assigned this Period							
Strike Team/Task Force/ Resource Designator	Leader	Number Persons	Trans. Needed	Drop Off PT./Time	Pick Up PT./Time		
ST 2800-A				Silver Dollar FG	Silver Dollar FG		
ST 3250-B				Silver Dollar FG	Silver Dollar FG		
ST 5002-B				Silver Dollar FG	Silver Dollar FG		
7. Control Operations Maintain 3 minute availability. Monitor Command Frequency.							
8. Special Instructions							
9. Division/Group Communication Summary							
Function	Frequency	System	Channel	Function	Frequency	System	Channel
Command	RX 151.355 TX 159.300	King NIFC	CDF CMD 1 CHANNEL 1	Logistics	RX 154.220 TX 159.195	King NIFC	OES 2B CHANNEL 3
Tactical Div/Group		King NIFC		Air to Ground	RX/TX 151.2200	King NIFC	CDF A/G CHANNEL 13
Prepared by (Resource Unit Ldr.) LINDA GREEN/MIKE SANTUCCIO		Approved by (Planning Sect. Ch.) SCOTTY JALBERT		Date June 11, 2008		Time 2400	

INCIDENT RADIO COMMUNICATIONS PLAN			Incident Name HUMBOLDT		Date/Time Prepared 6/11 2130	Operational Period Date/Time 6/12/08 0700 to 0700					
Ch #	Function	Channel Name/Trunked Radio System Talkgroup	Assignment	RX Freq	N or W	RX Tone/NAC	TX Freq	N or W	Tx Tone/NAC	Mode A, D or M	Remarks
1	Command	CDF C1	All Divisions	151.355		W	159.300		3	A	Tone 3
2	Command	CDF C7	IC Use	151.460		W	159.390		2	A	Tone 2 - Backup
3	Command	OES 2B	Incident Base	154.220		W	159.195		3	A	Tone 3 - Incident Support
4	Tactical	CDF T9	Div. A & B	151.385		W	151.385			A	
5	Tactical	White 1	Div Y & Z	154.265		W	154.265			A	
6	Tactical	White 3	Div. C	154.295		W	154.295			A	
7	Tactical	NIFC Tac 1	Div. D	168.0500		N	168.0500			A	
8	Tactical	NIFC Tac 3	Div. J	168.6000		N	168.6000			A	
9	Tactical	NIFC Tac 4	Div. T	164.1375		N	164.1375			A	
10	Tactical	NIFC Tac 5	Div. X	166.7250		N	166.7250			A	
11	Tactical	NIFC Tac 6		166.7750		N	166.7750			A	
12	Command	NIFC Command		TBA			TBA			A	Spare
13	CDF A/G	CDF A/G	All Divisions	151.2200	N	N	151.2200	N		A	Aircraft Hailing
14	Air Guard	Air Guard	All Divisions	168.6250	N	N	168.6250	N	110.9	A	Aircraft Emergency Hailing
15	CalCord	Medical Tactical	All Divisions	156.075		W	156.075			A	All Medical Traffic
16	Air Guard	Air Guard	All Divisions	168.6250	N	N	168.6250	N	110.9	A	Aircraft Emergency Hailing
Prepared by (Communications Unit) Brian D. Kornegay, COM1											
Incident Location Chico, CA											
			County	BTU	State	CA	Latitude		Longitude		W

The convention calls for frequency lists to show four digits after the decimal place, followed by either an "N" or a "W", depending on whether the frequency is narrow or wide band. Mode refers to either "A" or "D" indicating analog or digital (e.g. Project 25) or "M" indicating mixed mode. All channels are shown as if programmed in a control station, mobile or portable radio. Repeater and base stations must be programmed with the Rx and Tx reversed.

MEDICAL PLAN 206 ICS	1. INCIDENT NAME HUMBOLDT	2. DATE PREPARED 6/11/06	3. TIME PREPARED 1745 Hrs.	4. OPERATIONAL PERIOD 6/12/08 0700-0700 Hrs.
--------------------------------	-------------------------------------	-----------------------------	-------------------------------	--

5. INCIDENT MEDICAL AID STATIONS				
MEDICAL AID STATIONS	LOCATION		PARAMEDICS	
None	Utilize resources assigned to the incident for EMT needs		YES	NO
				X

6. TRANSPORTATION				
A. AMBULANCE SERVICES				
NAME	LOCATION	PHONE	PARAMEDICS	
			YES	NO
First Responder	333 Huss Road Suite 100, Chico	911/BTU-ECC	X	
Enlo Medics	1531 Esplanade, Chico	911/BTU-ECC	X	

B. INCIDENT AMBULANCES				
NAME	LOCATION	PARAMEDICS		
		YES	NO	
Air Medics	Enloe Hospital, 1531 Esplanade, Chico	X		

7. HOSPITALS								
NAME	ADDRESS	TRAVEL TIME		PHONE	HELIPAD		BURN CENTER	
		AIR	GRND		YES	NO	YES	NO
Oroville Hospital	2767 Olive Hwy, Oroville	X	X	911/BTU-ECC	X			X

8. MEDICAL EMERGENCY PROCEDURES	
<p>LINE EMERGENCY:</p> <ul style="list-style-type: none"> For serious injuries, make immediate notification to your division group supervisor on command net and BTU Local as a back-up only. Notification information must include type and number of injuries. Location and resource needs. Safety officer is to be notified and will assume responsibility for coordinating event. Significant events (i.e. major injury, death, missing person) requires immediate notification of the IC and PIO. 	<p style="text-align: center;"><u>INJURY REPORTING PROCEDURES</u></p> <p>NATURE OF INJURY _____</p> <p>LOCATION OF PATIENT _____</p> <p>TRANSPORTATION REQUESTED BY: AIR ___ GROUND ___</p> <p>POINT OF PICKUP _____</p> <p>LAT _____ LONG _____</p> <p>PATIENT UNIT ID _____</p> <p>IS A EMT WITH PATIENT: YES ___ NO ___</p> <p>AGE _____</p> <p>SEX: MALE ___ FEMALE ___</p> <p style="text-align: center;">ALL EMERGENCIES---Secure the area and identify witnesses for later investigation. Keep an accurate log of events.</p>

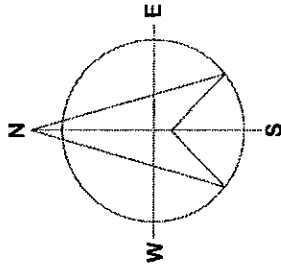
206 ICS FR	9. PREPARED BY: (Medical Unit Leader)	10. REVIEWED BY: (Safety Officer)
	Terrie Ridenhour (PSC-T)	<i>M. R. H.</i> 5081

AIR OPERATIONS SUMMARY		1. Incident Name Humboldt		Helibases Fixed Wing Bases		
4. Personnel and Communications	Name	Air/Air Frequency	Air/Ground Frequency	5. Remarks (Spec. Instructions, Safety Notes, Hazards, Priorities)		
Air Operations Director	TBA	151.3025	151.220	Powerlines in the Area!		
Air Attack Supervisor						
Helicopter Coordinator	Sjolund	RW 129.775		Request aircraft through Branch.		
Air Tanker Coordinator				Contact aircraft on A/G then switch		
Air Support Grp. Sup	Randy Rapp			TOLC: 122.975		
				Deck: 123.025		
6. Location/Function	7. Assignment	8. Fixed Wing No. Type	9. Helicopters No. Type	10. Available Time	11. Aircraft Assigned	12. Operating Base
	Medivac/Shorthaul	2 II	2 II	0800	902 516HT	Chico
			2 II	0900	206PJ 207PJ	Chico
	Heloc/Recon		1 III	0800	90301	Chico
		2 II		0800		
		2 II		0900		
	Air Tactical	1		0800	0800	
13. Totals		5	5			
14. Air Operations Support Equipment		15. Prepared by (include Date and Time) Randy Rapp 06/11/2008 2130				

CARE TO BE USED FOR WELLS & ELEC.

BUTTE COLLEGE - MAIN CAMPUS

REVISED ON 8/21/2007



NO EXFT
TO CLARK RD
AFTER 10:00.

ACCESS TO IN MATR 6
UNTIL 06-12
© 1600 HRS.

SHOWERS
TENTS w/AC
LIGHTING
PORT-A-POTTIES

HILL CAMPUS DRIVE
PORT-A-POTTIES

PORT-A-POTTIES

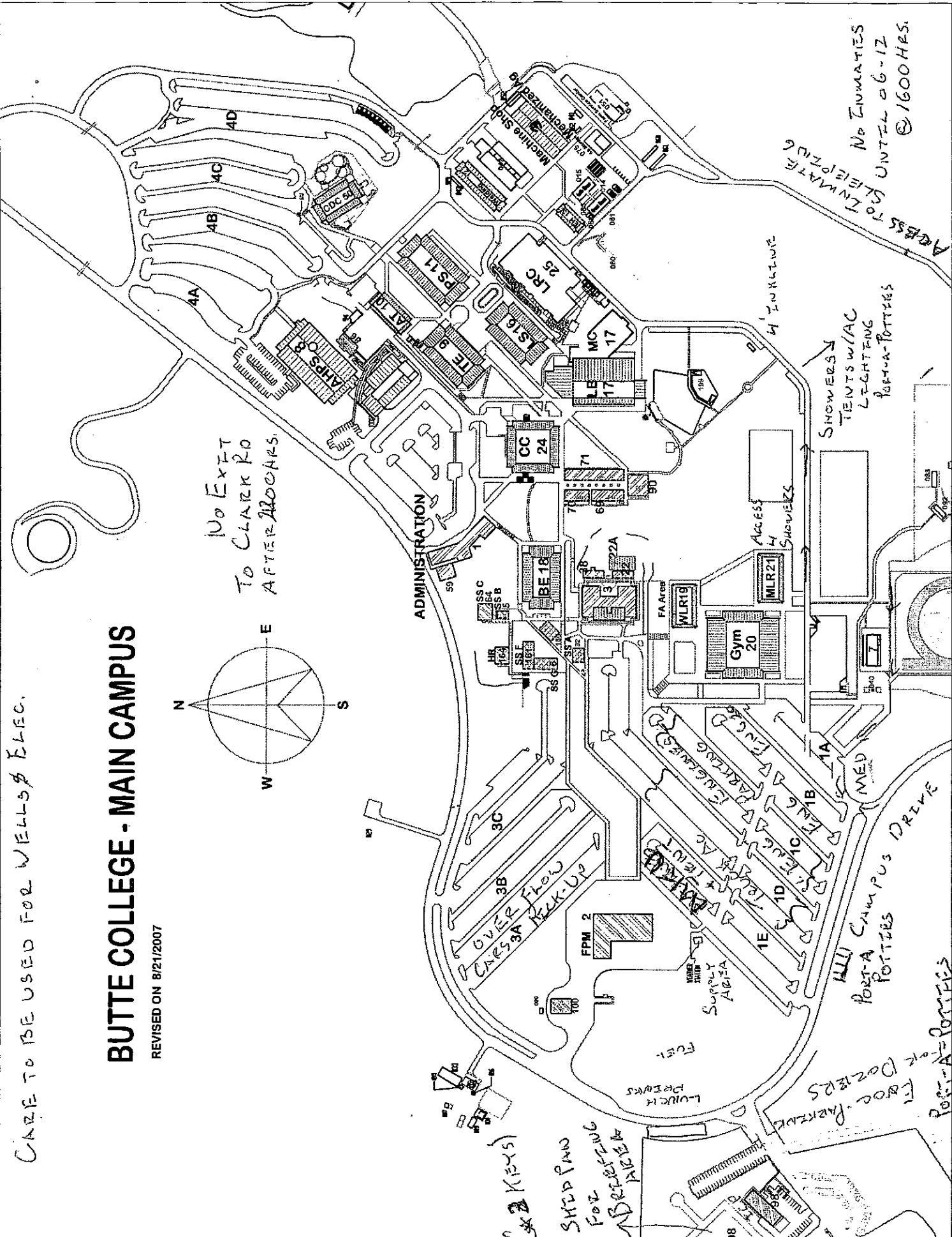
KEYS

SHED TWO FOR STORAGE

LUNCH PREMISES

SUPPLY AREA

FOR DOZERS



TRAINING SPECIALIST MESSAGE

If you would like to receive credit
As a Trainee on the

HUMBOLDT INCIDENT

Please stop by and see
the
Training Specialist
to
Initiate your
Documentation!

Thank you!

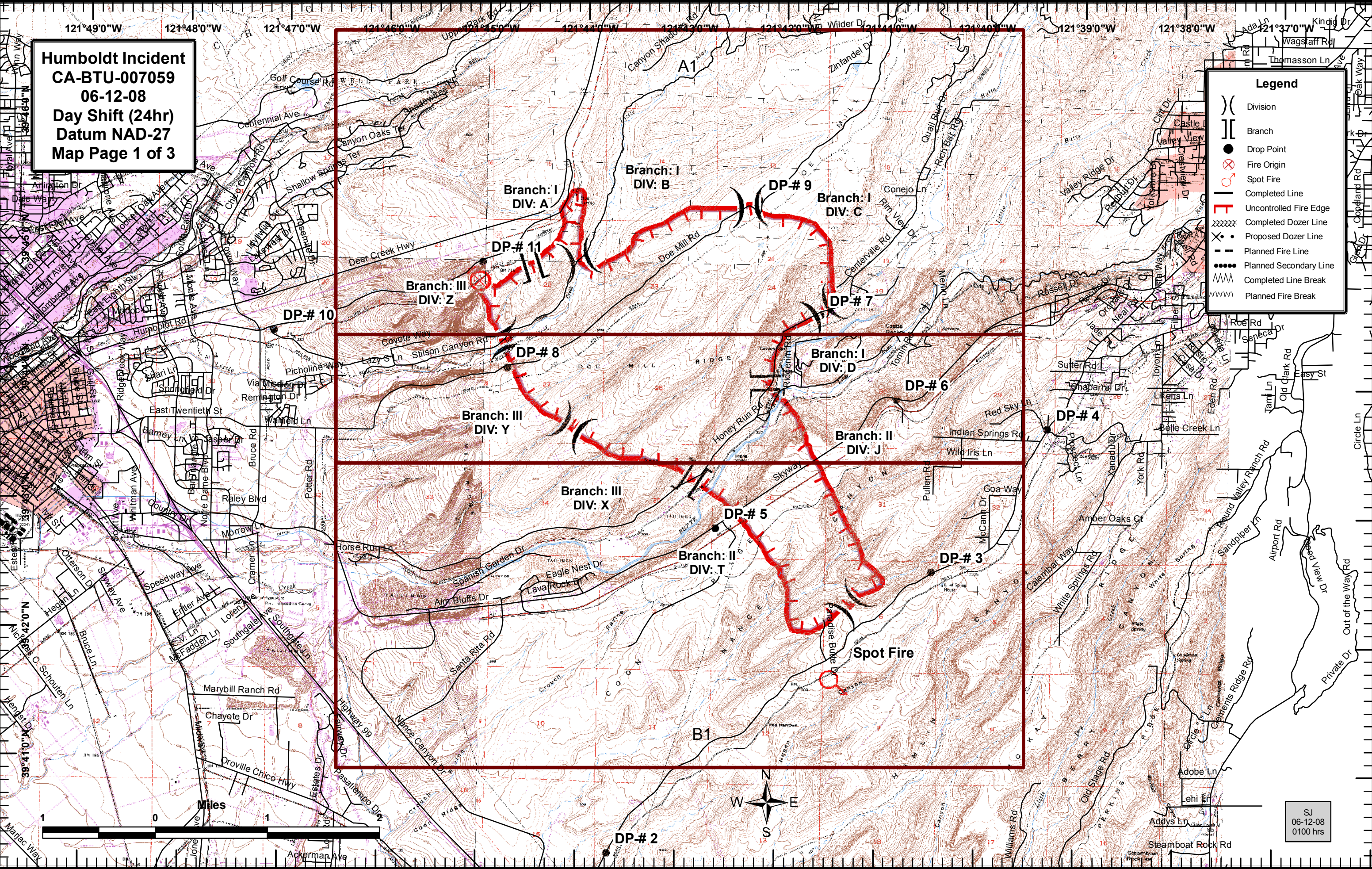
TOM REAVES

Training Specialist

Humboldt Incident
CA-BTU-007059
06-12-08
Day Shift (24hr)
Datum NAD-27
Map Page 1 of 3

Legend

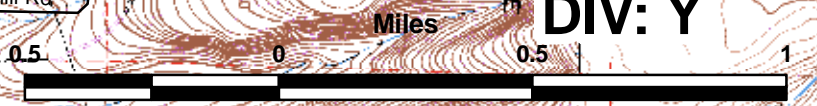
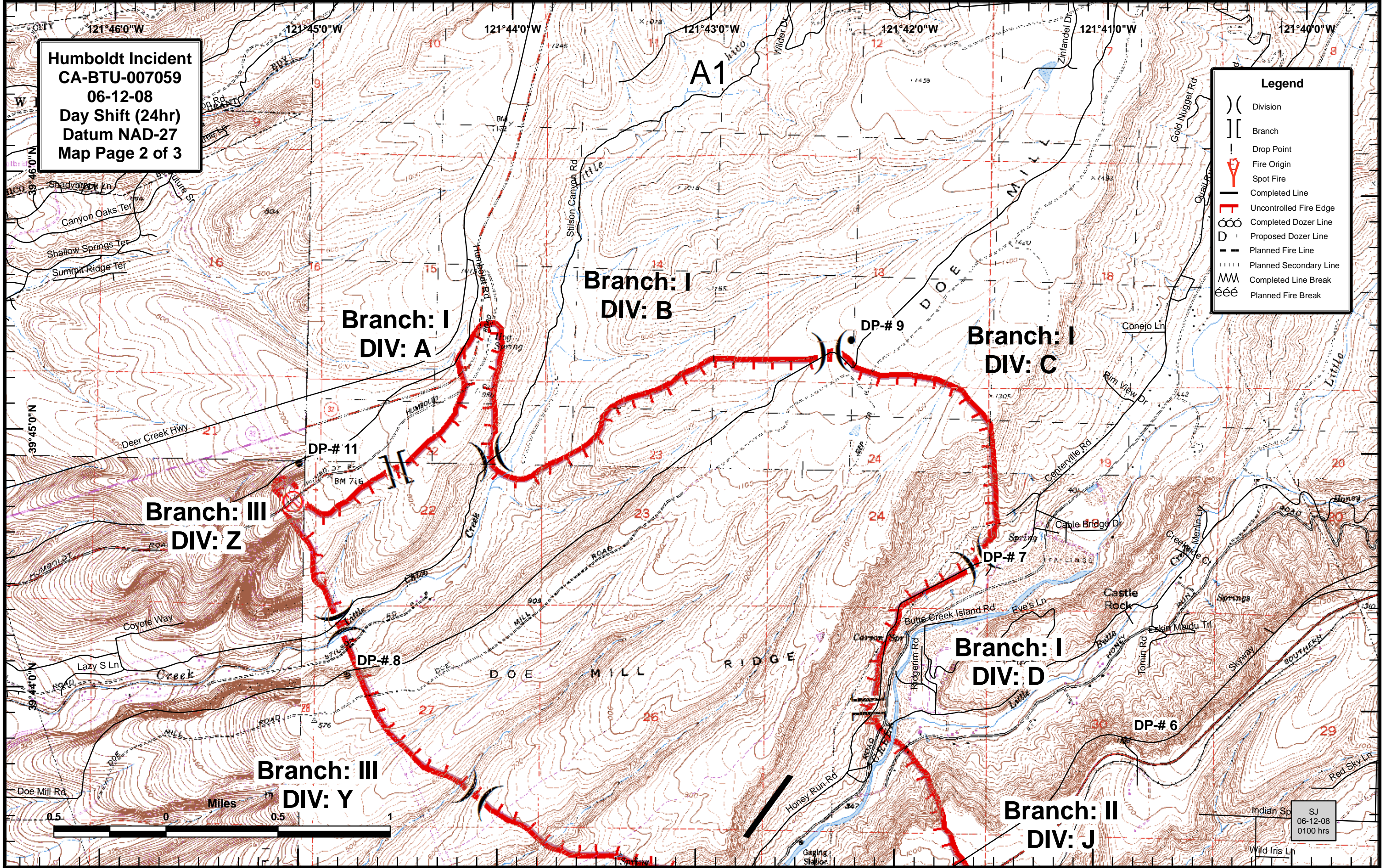
- () Division
- [] Branch
- Drop Point
- ⊗ Fire Origin
- Spot Fire
- Completed Line
- Uncontrolled Fire Edge
- XXXXX Completed Dozer Line
- ⊗ Proposed Dozer Line
- - - Planned Fire Line
- ⋯ Planned Secondary Line
- ~ Completed Line Break
- ~ Planned Fire Break



Humboldt Incident
CA-BTU-007059
06-12-08
Day Shift (24hr)
Datum NAD-27
Map Page 2 of 3

Legend

- () Division
- [] Branch
- ! Drop Point
- 🔥 Fire Origin
- 📍 Spot Fire
- Completed Line
- ┆ Uncontrolled Fire Edge
- Completed Dozer Line
- D Proposed Dozer Line
- - - Planned Fire Line
- ||||| Planned Secondary Line
- MM Completed Line Break
- ééé Planned Fire Break



SJ
06-12-08
0100 hrs

Humboldt Incident
CA-BTU-007059
06-12-08
Day Shift (24hr)
Datum NAD-27
Map Page 3 of 3

Legend	
()	Division
[]	Branch
!	Drop Point
	Fire Origin
	Spot Fire
—	Completed Line
	Uncontrolled Fire Edge
	Completed Dozer Line
	Proposed Dozer Line
- - -	Planned Fire Line
.....	Planned Secondary Line
	Completed Line Break
ééé	Planned Fire Break

Branch: III
DIV: Y

Branch: I
DIV: D

Branch: II
DIV: J

Branch: III
DIV: X

Branch: II
DIV: T

Spot Fire

B1

SJ
 06-12-08
 0100 hrs

