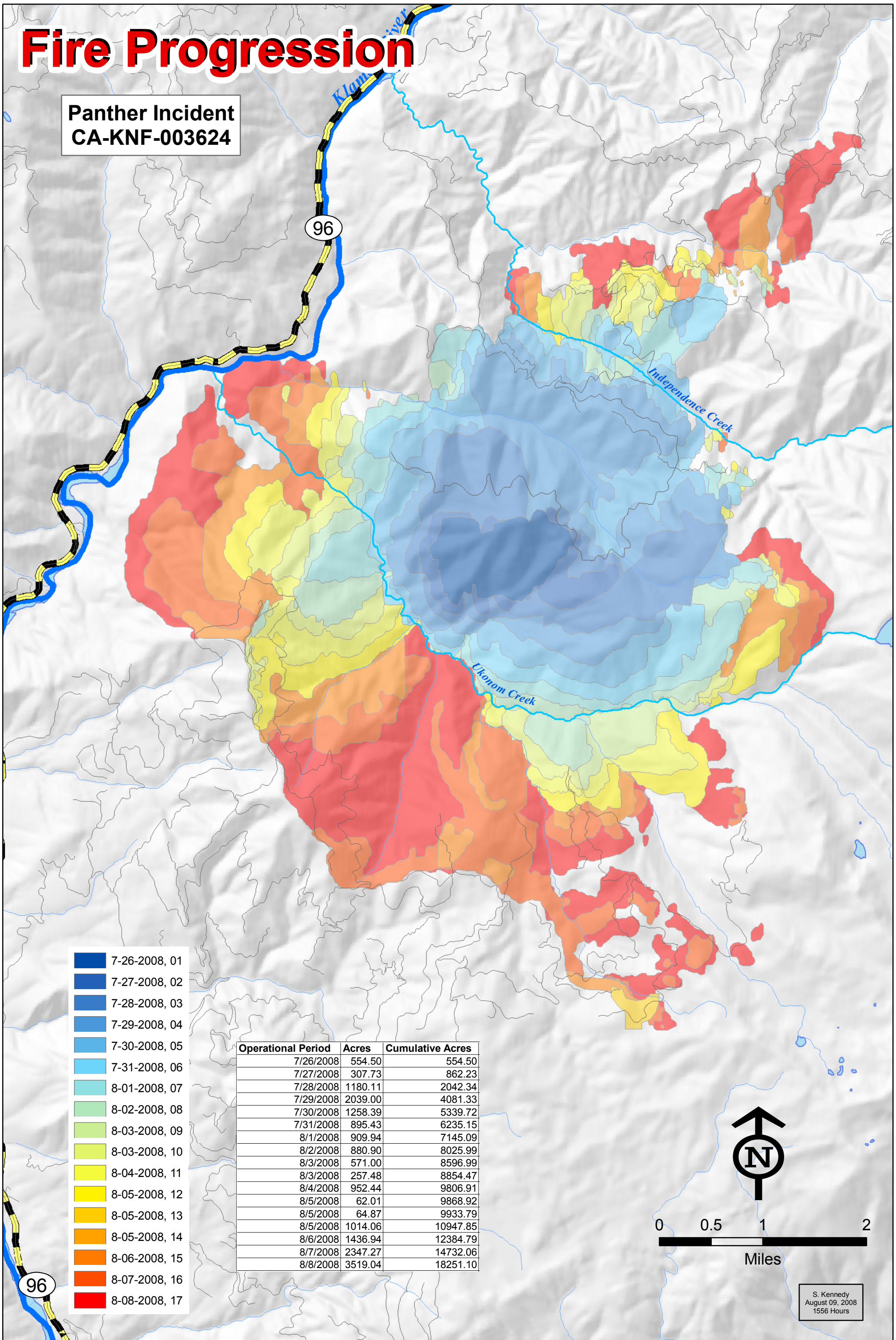


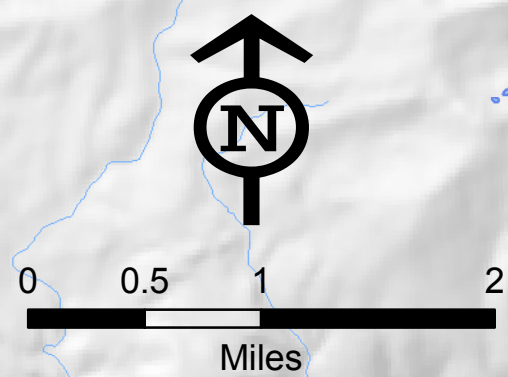
Fire Progression

**Panther Incident
CA-KNF-003624**



- 7-26-2008, 01
- 7-27-2008, 02
- 7-28-2008, 03
- 7-29-2008, 04
- 7-30-2008, 05
- 7-31-2008, 06
- 8-01-2008, 07
- 8-02-2008, 08
- 8-03-2008, 09
- 8-03-2008, 10
- 8-04-2008, 11
- 8-05-2008, 12
- 8-05-2008, 13
- 8-05-2008, 14
- 8-06-2008, 15
- 8-07-2008, 16
- 8-08-2008, 17

Operational Period	Acres	Cumulative Acres
7/26/2008	554.50	554.50
7/27/2008	307.73	862.23
7/28/2008	1180.11	2042.34
7/29/2008	2039.00	4081.33
7/30/2008	1258.39	5339.72
7/31/2008	895.43	6235.15
8/1/2008	909.94	7145.09
8/2/2008	880.90	8025.99
8/3/2008	571.00	8596.99
8/3/2008	257.48	8854.47
8/4/2008	952.44	9806.91
8/5/2008	62.01	9868.92
8/5/2008	64.87	9933.79
8/5/2008	1014.06	10947.85
8/6/2008	1436.94	12384.79
8/7/2008	2347.27	14732.06
8/8/2008	3519.04	18251.10



S. Kennedy
August 09, 2008
1556 Hours