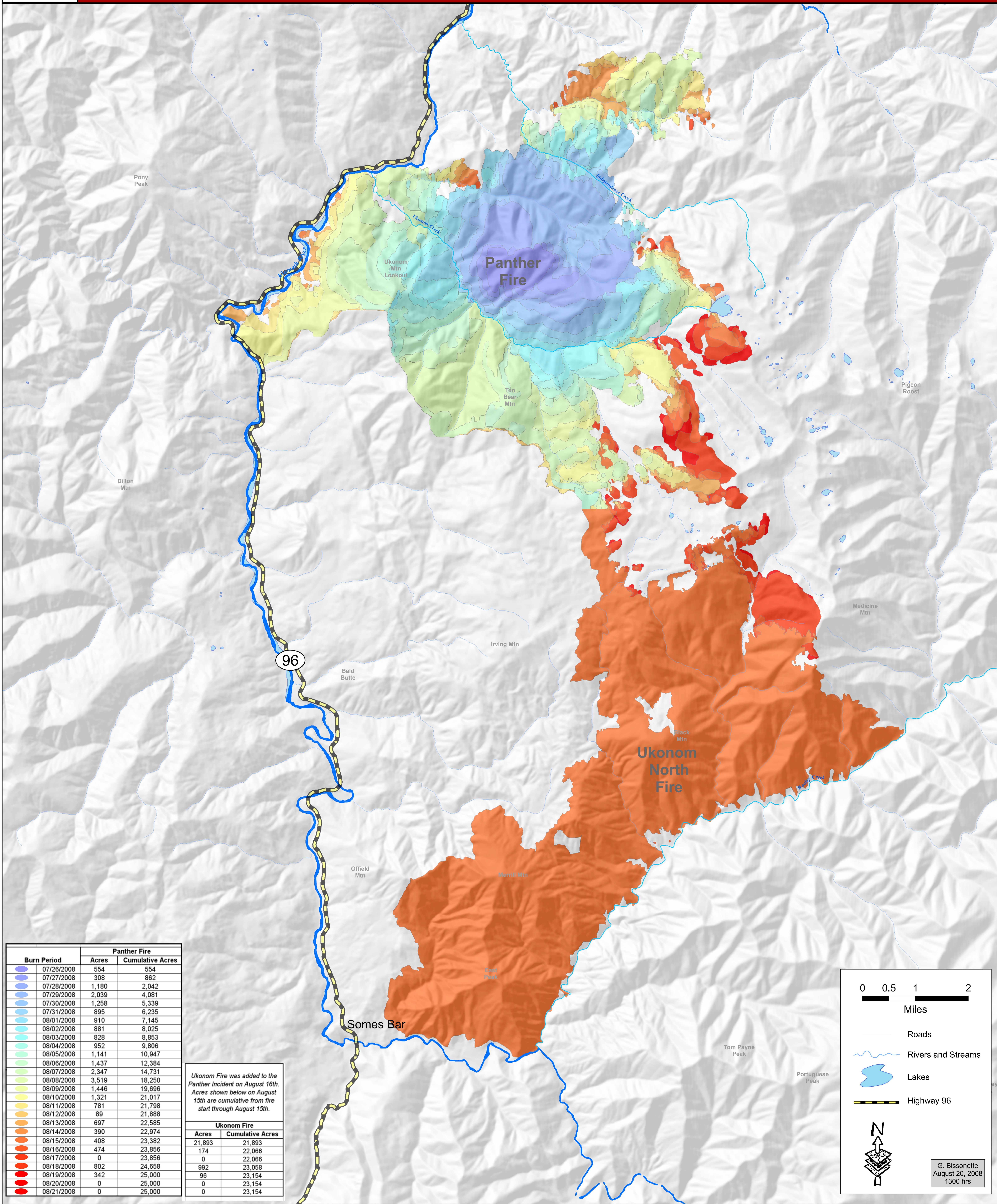




Panther Incident Progression Map

CA-KNF-003624

August 21, 2008



Panther Fire		
Burn Period	Acres	Cumulative Acres
07/26/2008	554	554
07/27/2008	308	862
07/28/2008	1,180	2,042
07/29/2008	2,039	4,081
07/30/2008	1,258	5,339
07/31/2008	895	6,235
08/01/2008	910	7,145
08/02/2008	881	8,025
08/03/2008	828	8,853
08/04/2008	952	9,806
08/05/2008	1,141	10,947
08/06/2008	1,437	12,384
08/07/2008	2,347	14,731
08/08/2008	3,519	18,250
08/09/2008	1,446	19,696
08/10/2008	1,321	21,017
08/11/2008	781	21,798
08/12/2008	89	21,888
08/13/2008	697	22,585
08/14/2008	390	22,974
08/15/2008	408	23,382
08/16/2008	474	23,856
08/17/2008	0	23,856
08/18/2008	802	24,658
08/19/2008	342	25,000
08/20/2008	0	25,000
08/21/2008	0	25,000

Ukonom Fire was added to the Panther Incident on August 16th. Acres shown below on August 15th are cumulative from fire start through August 15th.

Ukonom Fire	
Acres	Cumulative Acres
21,893	21,893
174	22,066
0	22,066
992	23,058
96	23,154
0	23,154
0	23,154

0 0.5 1 2
Miles

— Roads

— Rivers and Streams

— Lakes

— Highway 96

N

G. Bissonette
August 20, 2008
1300 hrs