



Operations Map

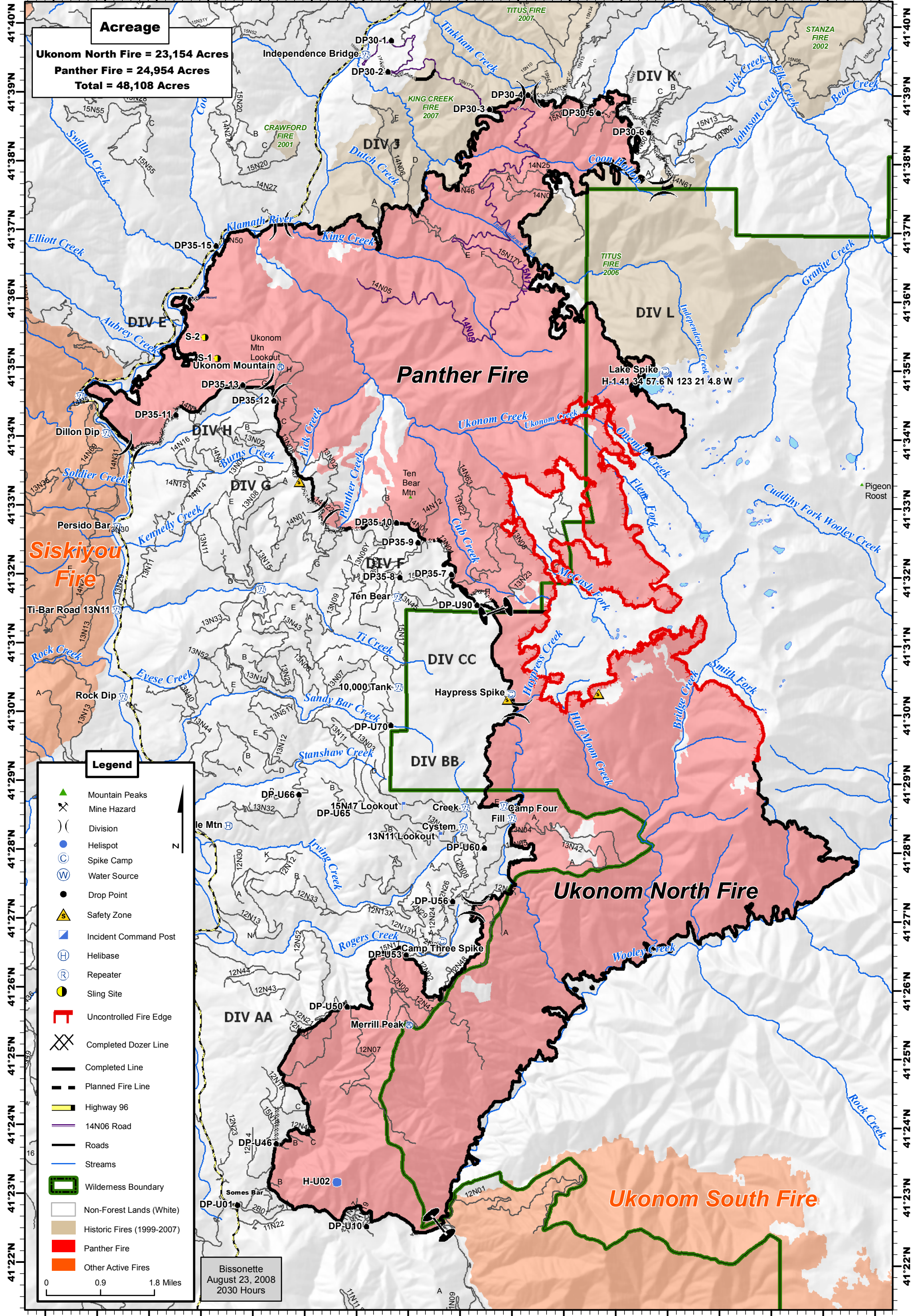
Panther Incident CA-KNF-003624

August 24-27, 2008

123°33'W 123°32'W 123°31'W 123°30'W 123°29'W 123°28'W 123°27'W 123°26'W 123°25'W 123°24'W 123°23'W 123°22'W 123°21'W 123°20'W 123°19'W 123°18'W 123°17'W

Acreage

Ukonom North Fire = 23,154 Acres
Panther Fire = 24,954 Acres
Total = 48,108 Acres



Legend

- Mountain Peaks
- Mine Hazard
- Division
- Helispot
- Spike Camp
- Water Source
- Drop Point
- Safety Zone
- Incident Command Post
- Helibase
- Repeater
- Sling Site
- Uncontrolled Fire Edge
- Completed Dozer Line
- Completed Line
- Planned Fire Line
- Highway 96
- 14N06 Road
- Roads
- Streams
- Wilderness Boundary
- Non-Forest Lands (White)
- Historic Fires (1999-2007)
- Panther Fire
- Other Active Fires

Bissonette
August 23, 2008
2030 Hours

0 0.9 1.8 Miles

123°33'W 123°32'W 123°31'W 123°30'W 123°29'W 123°28'W 123°27'W 123°26'W 123°25'W 123°24'W 123°23'W 123°22'W 123°21'W 123°20'W 123°19'W 123°18'W 123°17'W