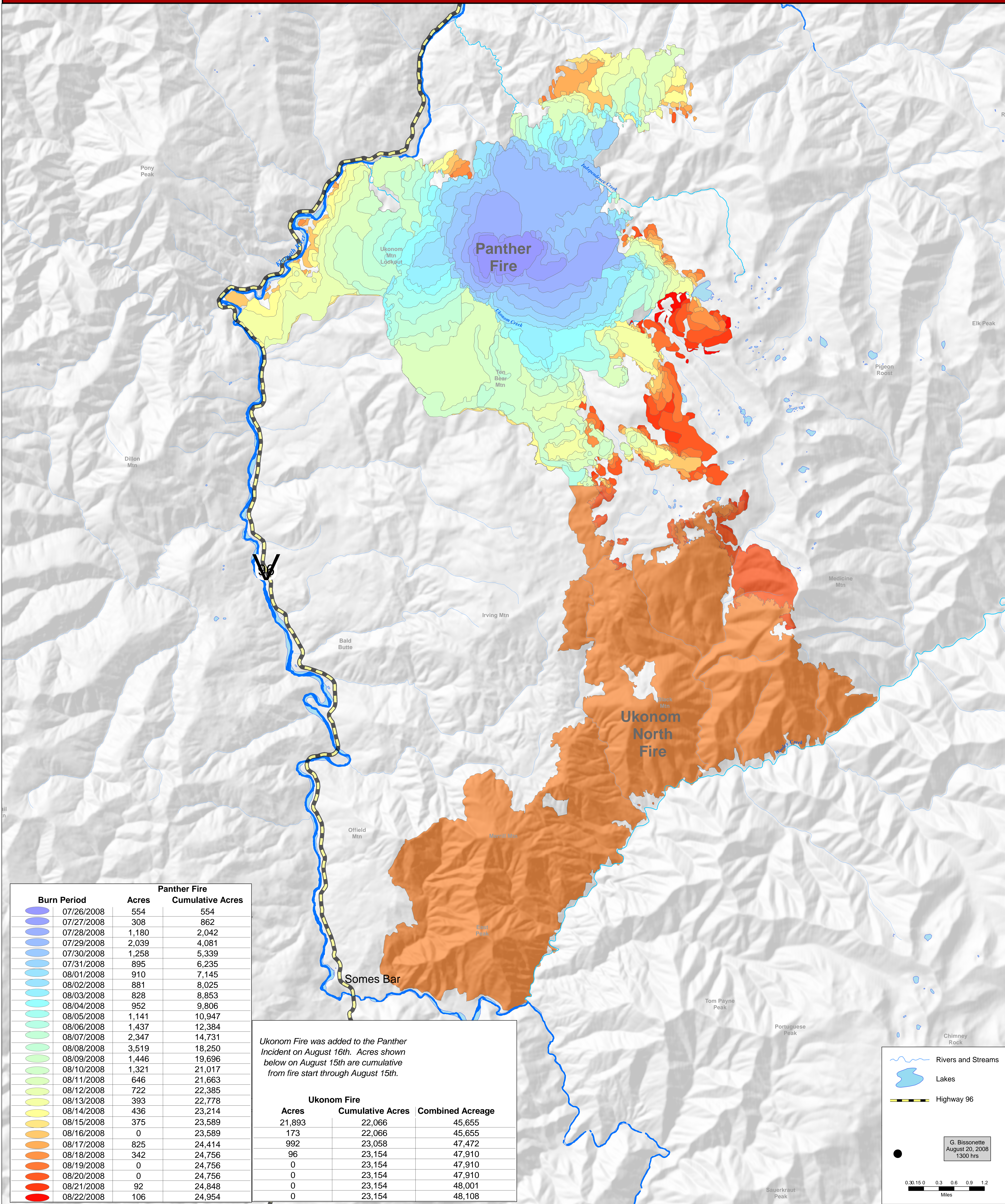




Panther Incident Progression Map

CA-KNF-003624

August 24, 2008



Panther Fire			
Burn Period	Acres	Cumulative Acres	
07/26/2008	554	554	
07/27/2008	308	862	
07/28/2008	1,180	2,042	
07/29/2008	2,039	4,081	
07/30/2008	1,258	5,339	
07/31/2008	895	6,235	
08/01/2008	910	7,145	
08/02/2008	881	8,025	
08/03/2008	828	8,853	
08/04/2008	952	9,806	
08/05/2008	1,141	10,947	
08/06/2008	1,437	12,384	
08/07/2008	2,347	14,731	
08/08/2008	3,519	18,250	
08/09/2008	1,446	19,696	
08/10/2008	1,321	21,017	
08/11/2008	646	21,663	
08/12/2008	722	22,385	
08/13/2008	393	22,778	
08/14/2008	436	23,214	
08/15/2008	375	23,589	
08/16/2008	0	23,589	
08/17/2008	825	24,414	
08/18/2008	342	24,756	
08/19/2008	0	24,756	
08/20/2008	0	24,756	
08/21/2008	92	24,848	
08/22/2008	106	24,954	

Ukonom Fire was added to the Panther Incident on August 16th. Acres shown below on August 15th are cumulative from fire start through August 15th.

Ukonom Fire		
Acres	Cumulative Acres	Combined Acreage
21,893	22,066	45,655
173	22,066	45,655
992	23,058	47,472
96	23,154	47,910
0	23,154	47,910
0	23,154	47,910
0	23,154	47,910
0	23,154	48,001
0	23,154	48,108

Rivers and Streams
Lakes
Highway 96

G. Bissonette
August 20, 2008
1300 hrs

0.3 0.6 0.9 1.2
Miles