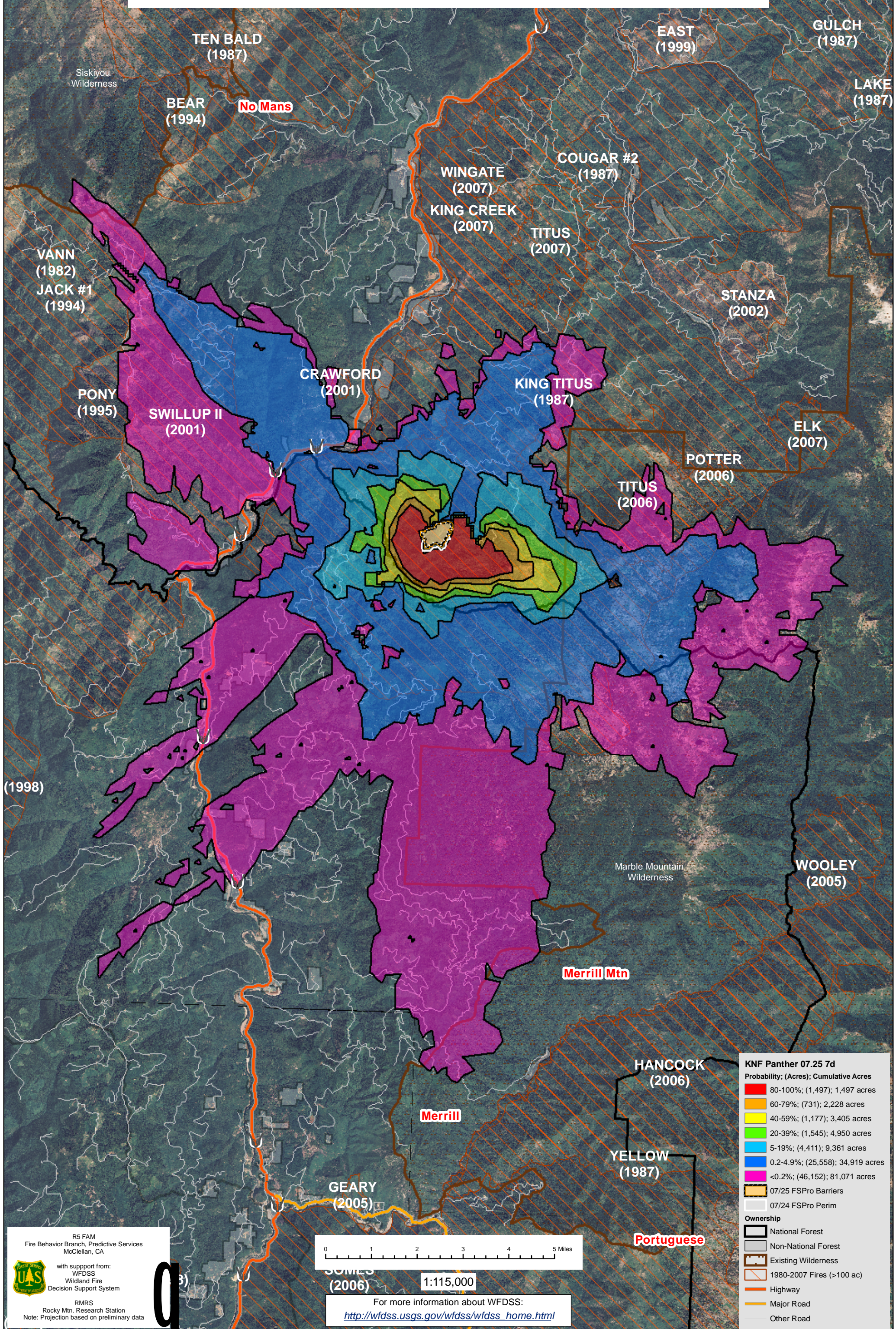


WFDSS - FSPRO PROBABILITY: KNF Panther Fire (2008)  
07/25 - 7 DAYS - 90m Res, 1000 Fire Sim: ERC: Somes Bar; WINDS: Ship Mtn LO  
File: Panther7.25\_2006-07firemask\_1000fire\_7day; Analyst: Clint Isbell



**KNF Panther 07.25 7d**

Probability	(Acres)	Cumulative Acres
80-100%	(1,497)	1,497 acres
60-79%	(731)	2,228 acres
40-59%	(1,177)	3,405 acres
20-39%	(1,545)	4,950 acres
5-19%	(4,411)	9,361 acres
0.2-4.9%	(25,558)	34,919 acres
<0.2%	(46,152)	81,071 acres

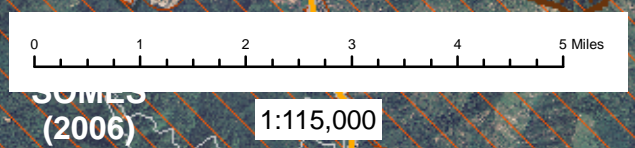
**Legend**

- 07/25 FSPRO Barriers
- 07/24 FSPRO Perim
- Ownership**
  - National Forest
  - Non-National Forest
  - Existing Wilderness
  - 1980-2007 Fires (>100 ac)
- Highway
- Major Road
- Other Road

R5 FAM  
Fire Behavior Branch, Predictive Services  
McClellan, CA

with support from:  
WFDSS  
Wildland Fire  
Decision Support System

RMRS  
Rocky Mtn. Research Station  
Note: Projection based on preliminary data



For more information about WFDSS:  
[http://wfdss.usgs.gov/wfdss/wfdss\\_home.html](http://wfdss.usgs.gov/wfdss/wfdss_home.html)