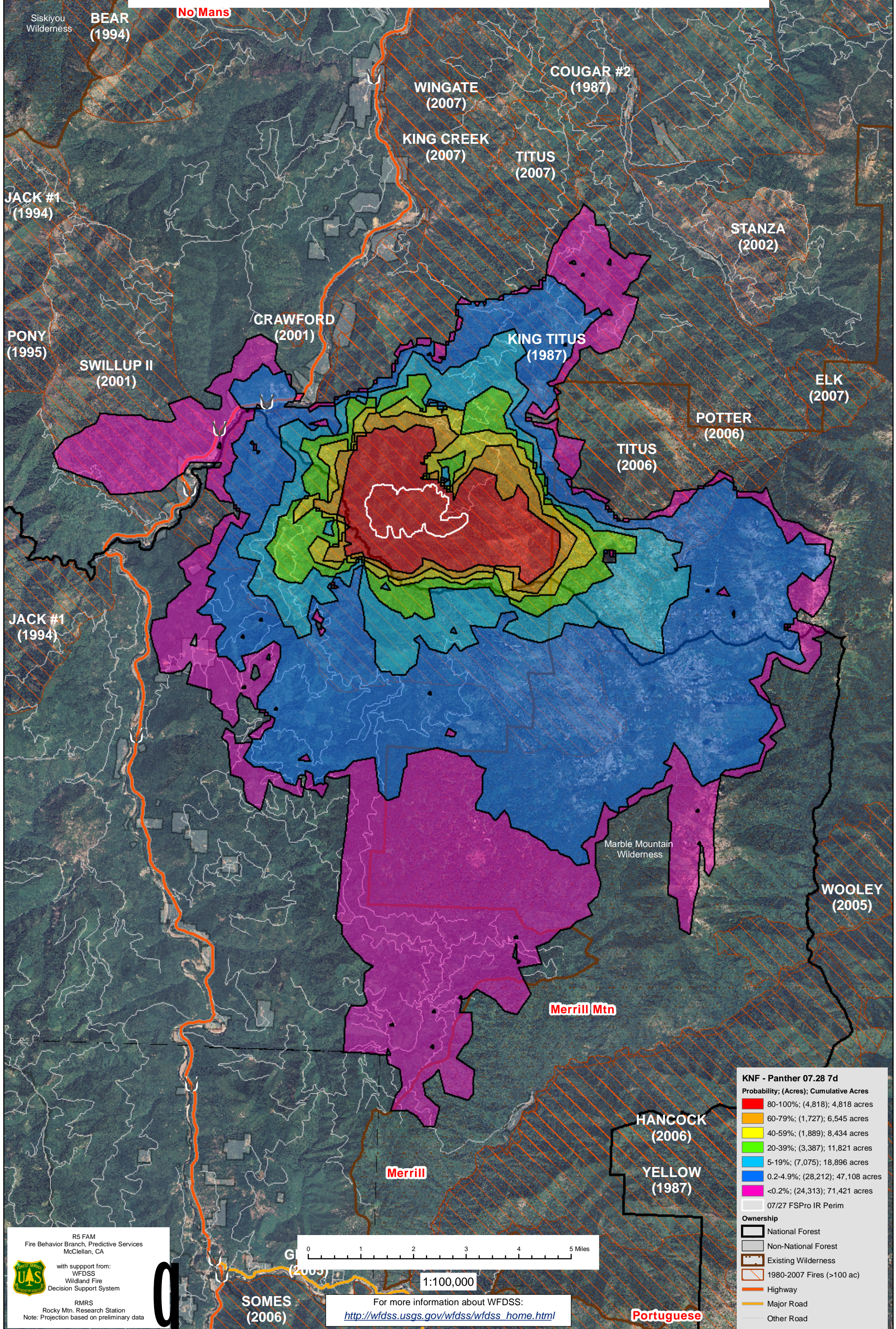


July 28, 2008

WFDSS - FSPRO PROBABILITY: KNF Panther Fire (2008)  
07/28 - 7 DAYS - 90m Res, 1000 Fire Sim: ERC: Somes Bar; WINDS: Slater Butte  
File: PANTHER 7.28.2008 7 Day 1000 Fires; Analyst: Larry Hood

GULCH (1987)



**KNF - Panther 07.28 7d**

Probability; (Acres); Cumulative Acres

80-100%	(4,818); 4,818 acres
60-79%	(1,727); 6,545 acres
40-59%	(1,889); 8,434 acres
20-39%	(3,387); 11,821 acres
5-19%	(7,075); 18,896 acres
0.2-4.9%	(28,212); 47,108 acres
<0.2%	(24,313); 71,421 acres
07/27 FSPRO IR Perim	

**Ownership**

- National Forest
- Non-National Forest
- Existing Wilderness
- 1980-2007 Fires (>100 ac)
- Highway
- Major Road
- Other Road

R5 FAM  
Fire Behavior Branch, Predictive Services  
McClellan, CA

with support from:  
WFDSS  
Wildland Fire  
Decision Support System

RMRS  
Rocky Mtn. Research Station  
Note: Projection based on preliminary data

For more information about WFDSS:  
[http://wfdss.usgs.gov/wfdss/wfdss\\_home.html](http://wfdss.usgs.gov/wfdss/wfdss_home.html)

Portuguese