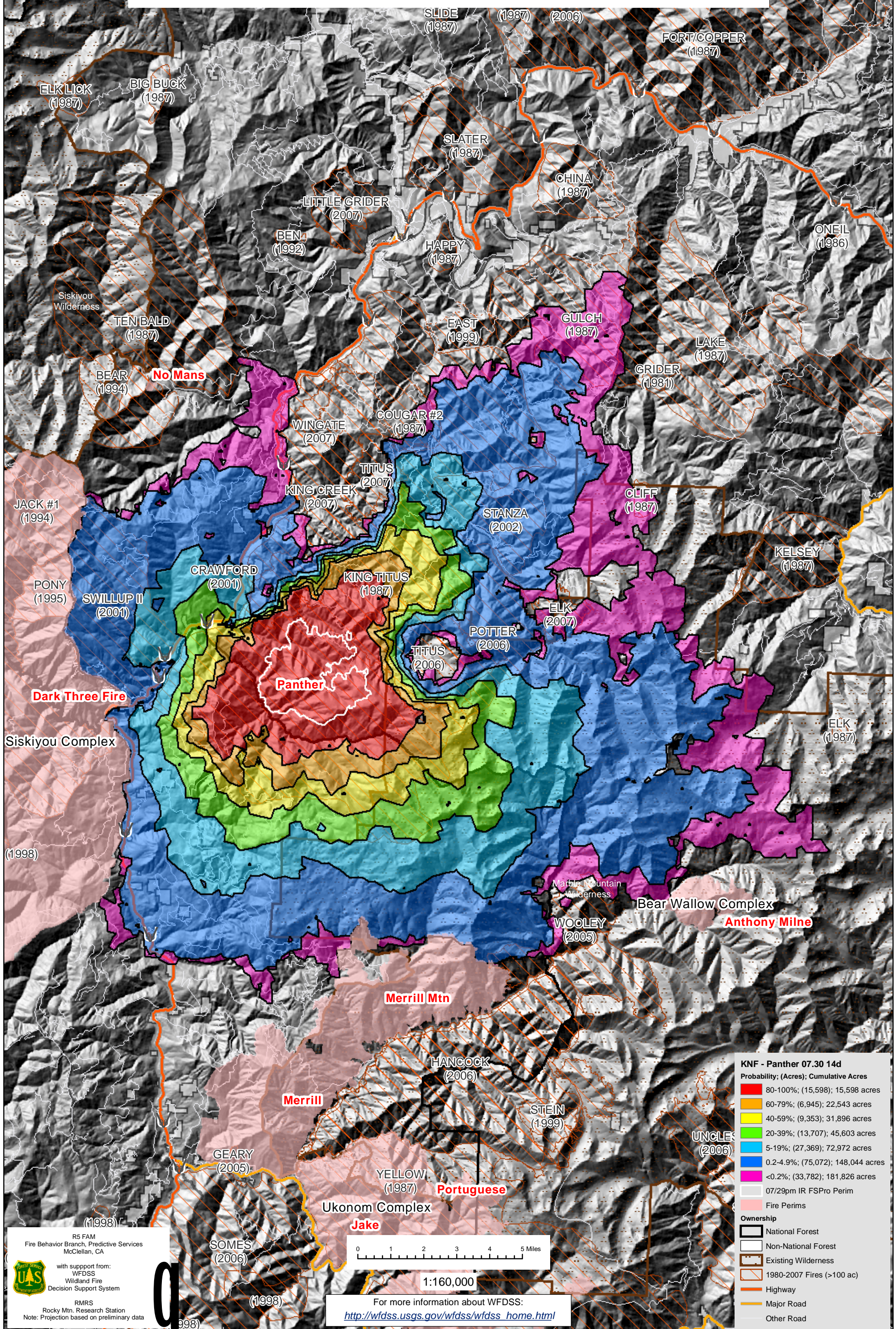


WFDSS - FSPRO PROBABILITY: KNF Panther Fire (2008)  
07/30 - 14 DAYS - 90m Res, 1000 Fire Sim: ERC: Somes Bar; WINDS: Slater Butte  
File: PANTHER 7.30.2008 14 Day 1000 Fires: RAVAR; Analyst: Larry Hood



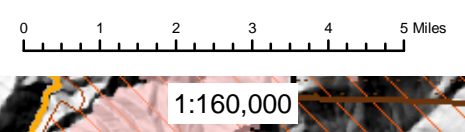
**KNF - Panther 07.30 14d**  
Probability; (Acres); Cumulative Acres

80-100%	(15,598)	15,598 acres
60-79%	(6,945)	22,543 acres
40-59%	(9,353)	31,896 acres
20-39%	(13,707)	45,603 acres
5-19%	(27,369)	72,972 acres
0.2-4.9%	(75,072)	148,044 acres
<0.2%	(33,782)	181,826 acres

07/29pm IR FSPRO Perim  
Fire Perims

**Ownership**

- National Forest
- Non-National Forest
- Existing Wilderness
- 1980-2007 Fires (>100 ac)
- Highway
- Major Road
- Other Road



R5 FAM  
Fire Behavior Branch, Predictive Services  
McClellan, CA

with support from:  
WFDSS  
Wildland Fire  
Decision Support System

RMRS  
Rocky Mtn. Research Station  
Note: Projection based on preliminary data

For more information about WFDSS:  
[http://wfdss.usgs.gov/wfdss/wfdss\\_home.html](http://wfdss.usgs.gov/wfdss/wfdss_home.html)