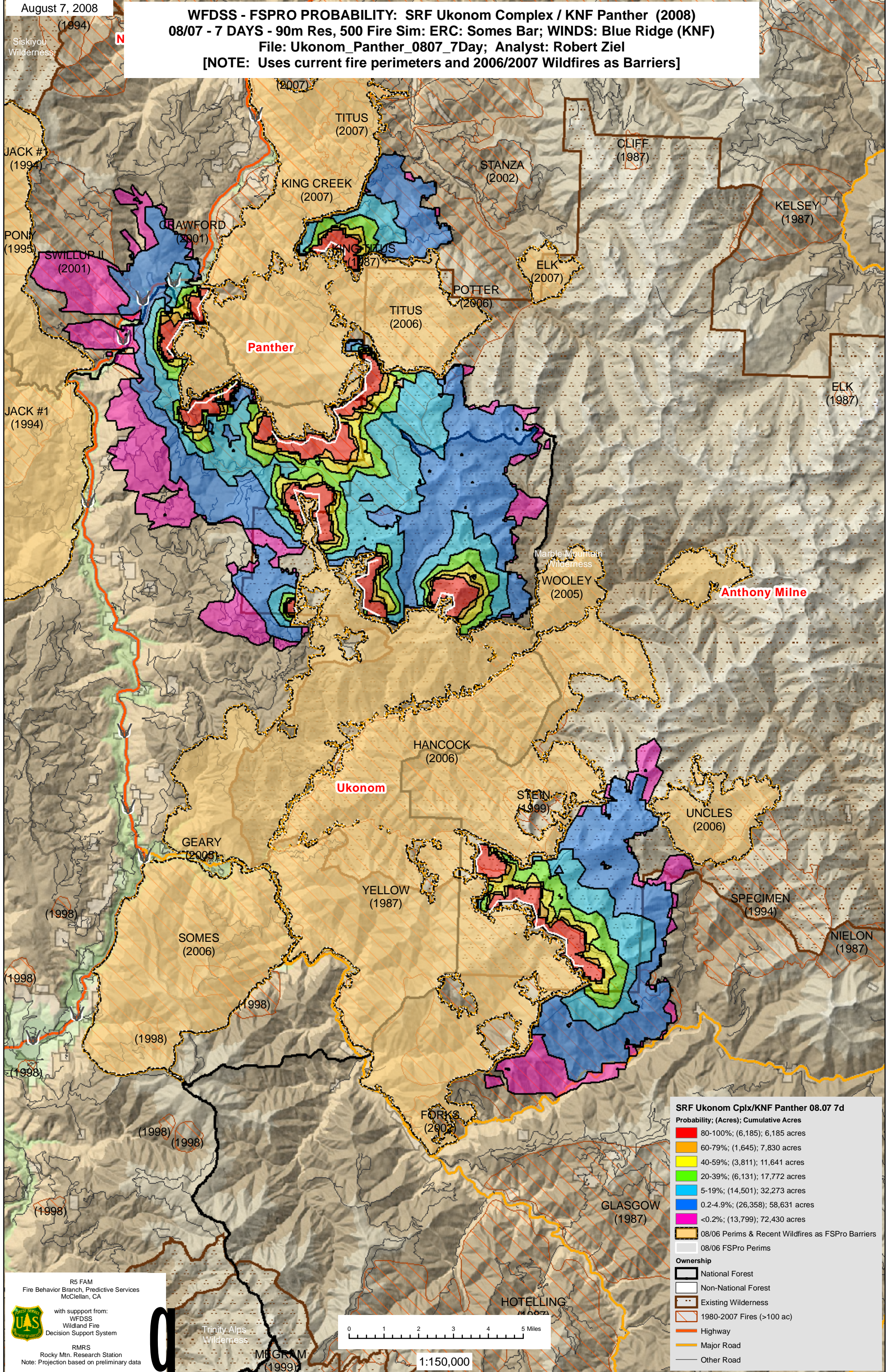


August 7, 2008

WFDSS - FSPRO PROBABILITY: SRF Ukonom Complex / KNF Panther (2008)
08/07 - 7 DAYS - 90m Res, 500 Fire Sim: ERC: Somes Bar; WINDS: Blue Ridge (KNF)
File: Ukonom_Panther_0807_7Day; Analyst: Robert Ziel
[NOTE: Uses current fire perimeters and 2006/2007 Wildfires as Barriers]



SRF Ukonom Cplx/KNF Panther 08.07 7d

Probability; (Acres); Cumulative Acres

80-100%	(6,185); 6,185 acres
60-79%	(1,645); 7,830 acres
40-59%	(3,811); 11,641 acres
20-39%	(6,131); 17,772 acres
5-19%	(14,501); 32,273 acres
0.2-4.9%	(26,358); 58,631 acres
<0.2%	(13,799); 72,430 acres

08/06 Perims & Recent Wildfires as FSPRO Barriers
08/06 FSPRO Perims

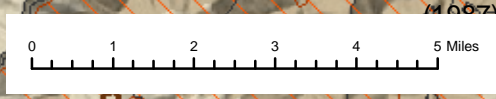
Ownership

- National Forest
- Non-National Forest
- Existing Wilderness
- 1980-2007 Fires (>100 ac)
- Highway
- Major Road
- Other Road

R5 FAM
Fire Behavior Branch, Predictive Services
McClellan, CA

with support from:
WFDSS
Wildland Fire
Decision Support System

RMRS
Rocky Mtn. Research Station
Note: Projection based on preliminary data



1:150,000