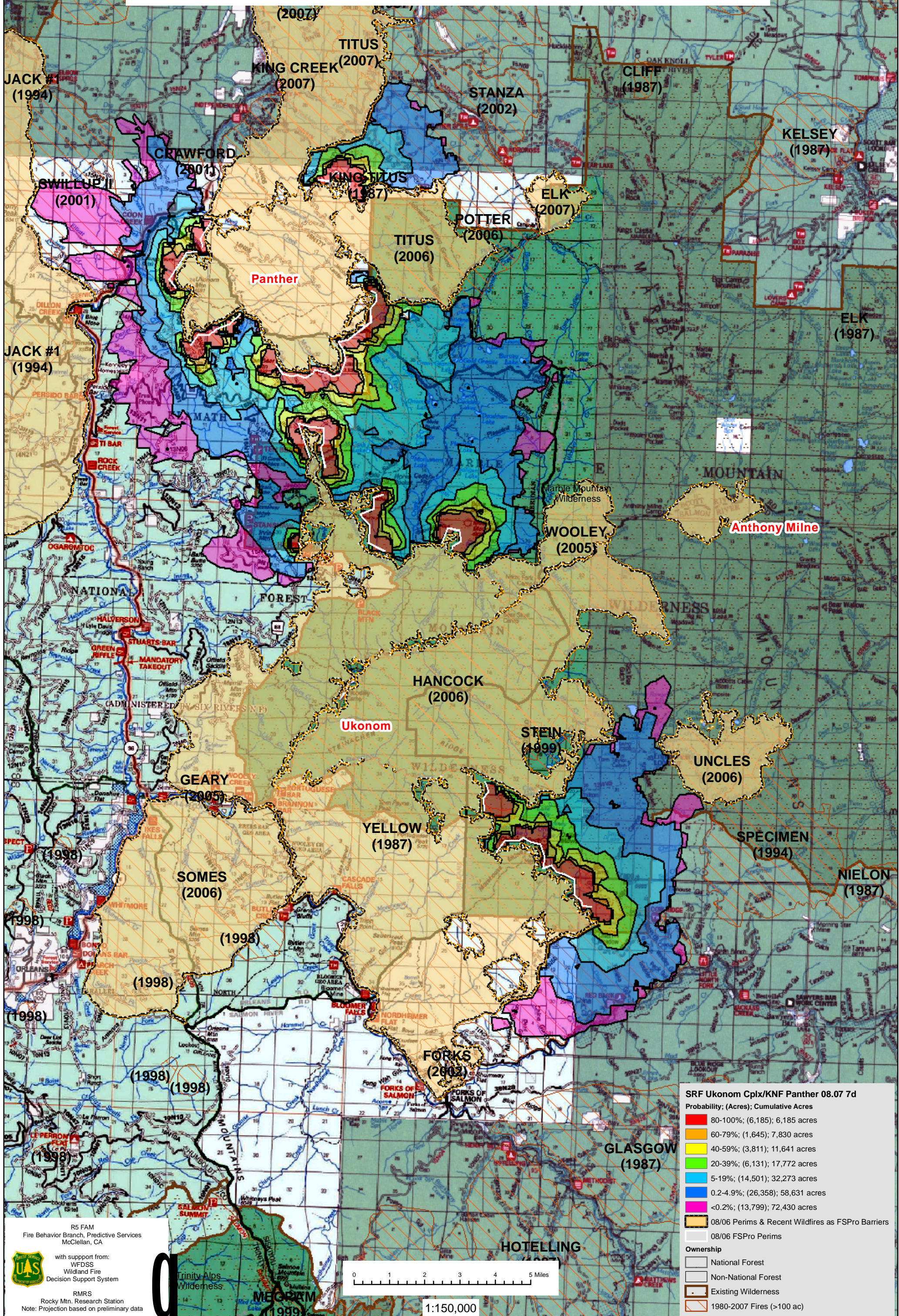


August 7, 2008

WFDSS - FSPRO PROBABILITY: SRF Ukonom Complex / KNF Panther (2008)  
08/07 - 7 DAYS - 90m Res, 500 Fire Sim: ERC: Somes Bar; WINDS: Blue Ridge (KNF)  
File: Ukonom\_Panther\_0807\_7Day; Analyst: Robert Ziel  
[NOTE: Uses current fire perimeters and 2006/2007 Wildfires as Barriers]



**SRF Ukonom Cplx/KNF Panther 08.07 7d**  
Probability; (Acres); Cumulative Acres

- 80-100%; (6,185); 6,185 acres
- 60-79%; (1,645); 7,830 acres
- 40-59%; (3,811); 11,641 acres
- 20-39%; (6,131); 17,772 acres
- 5-19%; (14,501); 32,273 acres
- 0.2-4.9%; (26,358); 58,631 acres
- <0.2%; (13,799); 72,430 acres

08/06 Perims & Recent Wildfires as FSPRO Barriers  
08/06 FSPRO Perims

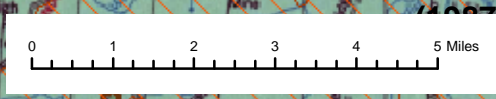
**Ownership**

- National Forest
- Non-National Forest
- Existing Wilderness
- 1980-2007 Fires (>100 ac)

R5 FAM  
Fire Behavior Branch, Predictive Services  
McClellan, CA

with support from:  
WFDSS  
Wildland Fire  
Decision Support System

RMRS  
Rocky Mtn. Research Station  
Note: Projection based on preliminary data



1:150,000