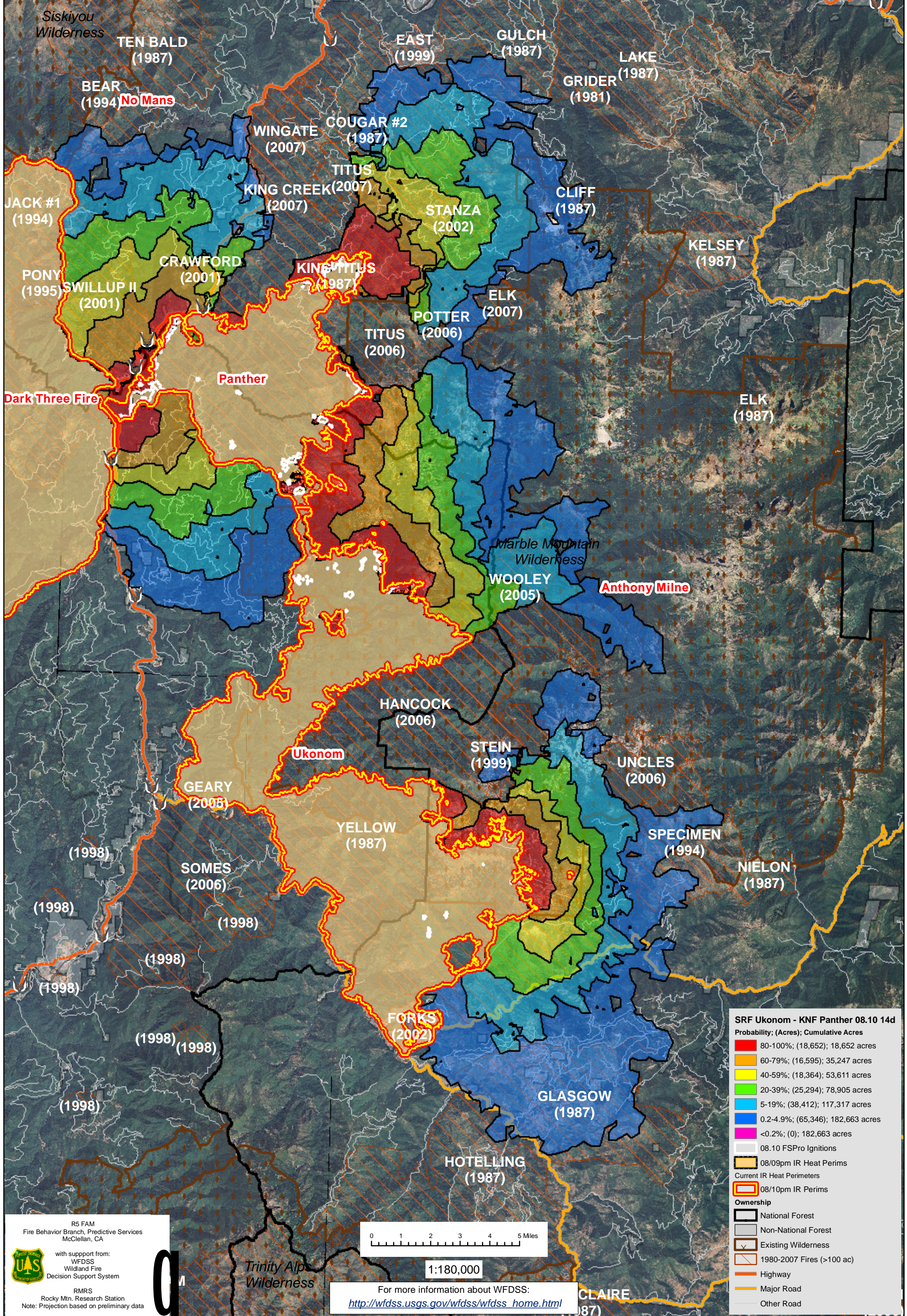


WFDSS - FSPRO PROBABILITY: SRF Ukonom Complex / KNF Panther (2008)  
08/10 - 14 Days - 90m Res; 128 Fire Sim; ERC: Collins Baldy LO; WINDS: Blue Ridge (KNF);  
File: Ukonom\_Panther\_0810\_14Day Analyst: Robert Ziel  
[NOTE: Uses current fire perimeters and 2006/2007 Wildfires as Barriers]



**SRF Ukonom - KNF Panther 08.10 14d**  
Probability; (Acres); Cumulative Acres

- 80-100%; (18,652); 18,652 acres
- 60-79%; (16,595); 35,247 acres
- 40-59%; (18,364); 53,611 acres
- 20-39%; (25,294); 78,905 acres
- 5-19%; (38,412); 117,317 acres
- 0.2-4.9%; (65,346); 182,663 acres
- <0.2%; (0); 182,663 acres

08.10 FSPRO Ignitions

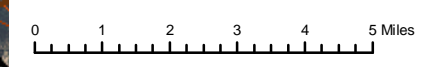
08/09pm IR Heat Perims

Current IR Heat Perimeters

08/10pm IR Perims

**Ownership**

- National Forest
- Non-National Forest
- Existing Wilderness
- 1980-2007 Fires (>100 ac)
- Highway
- Major Road
- Other Road



1:180,000

For more information about WFDSS:  
[http://wfdss.usgs.gov/wfdss/wfdss\\_home.html](http://wfdss.usgs.gov/wfdss/wfdss_home.html)

R5 FAM  
Fire Behavior Branch, Predictive Services  
McClellan, CA

with support from:  
WFDSS  
Wildland Fire  
Decision Support System

RMRS  
Rocky Mtn. Research Station  
Note: Projection based on preliminary data

Trinity Alps  
Wilderness

CLAIRE  
(1987)