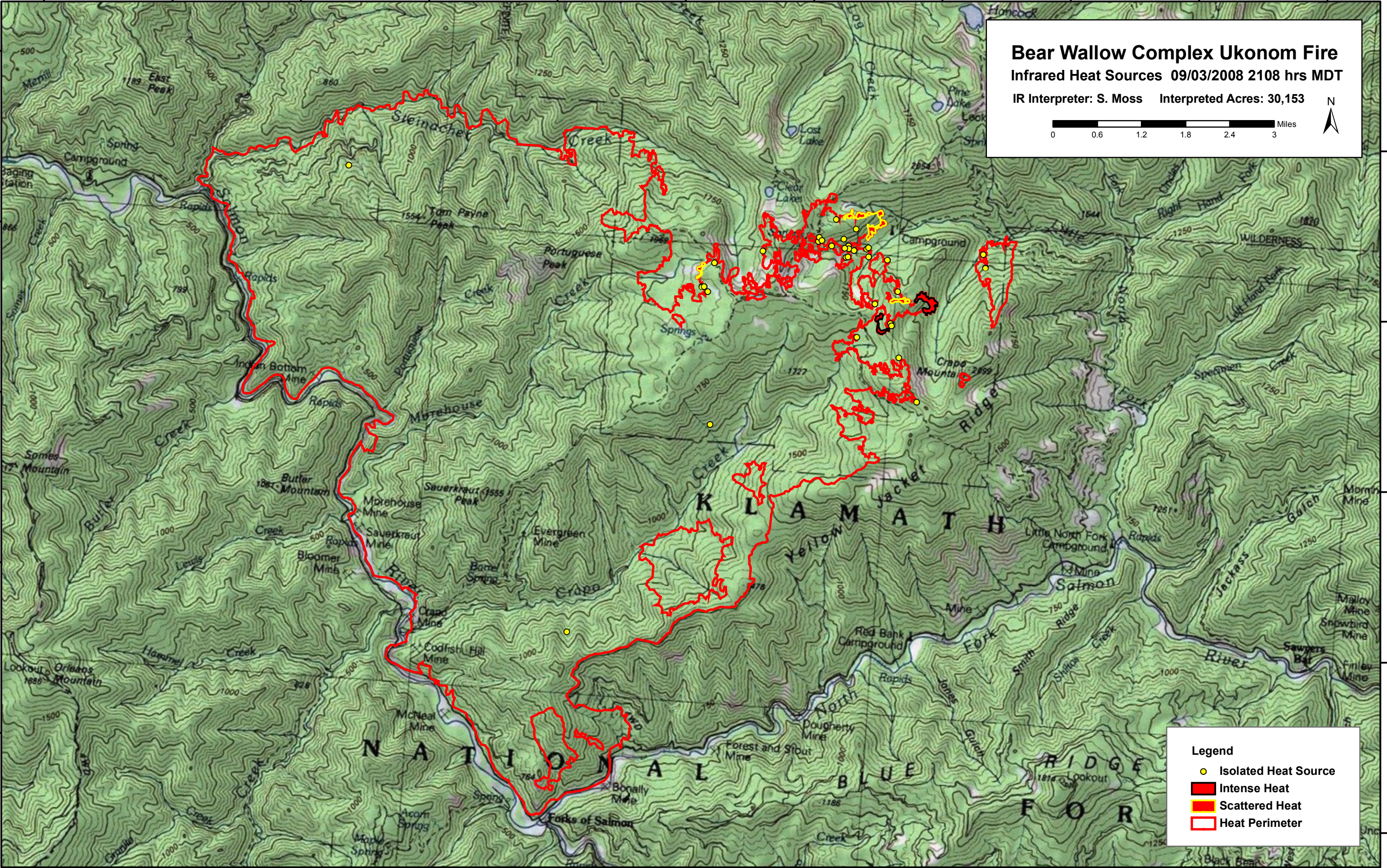


123°28'0"W 123°26'0"W 123°24'0"W 123°22'0"W 123°20'0"W 123°18'0"W 123°16'0"W 123°14'0"W 123°12'0"W 123°10'0"W 123°8'0"W

41°24'0"N
41°22'0"N
41°20'0"N
41°18'0"N
41°16'0"N



Bear Wallow Complex Ukonom Fire
Infrared Heat Sources 09/03/2008 2108 hrs MDT
 IR Interpreter: S. Moss Interpreted Acres: 30,153

0 0.6 1.2 1.8 2.4 3 Miles

N

Legend

- Isolated Heat Source
- Intense Heat
- Scattered Heat
- Heat Perimeter

123°26'0"W 123°24'0"W 123°22'0"W 123°20'0"W 123°18'0"W 123°16'0"W 123°14'0"W 123°12'0"W 123°10'0"W 123°8'0"W