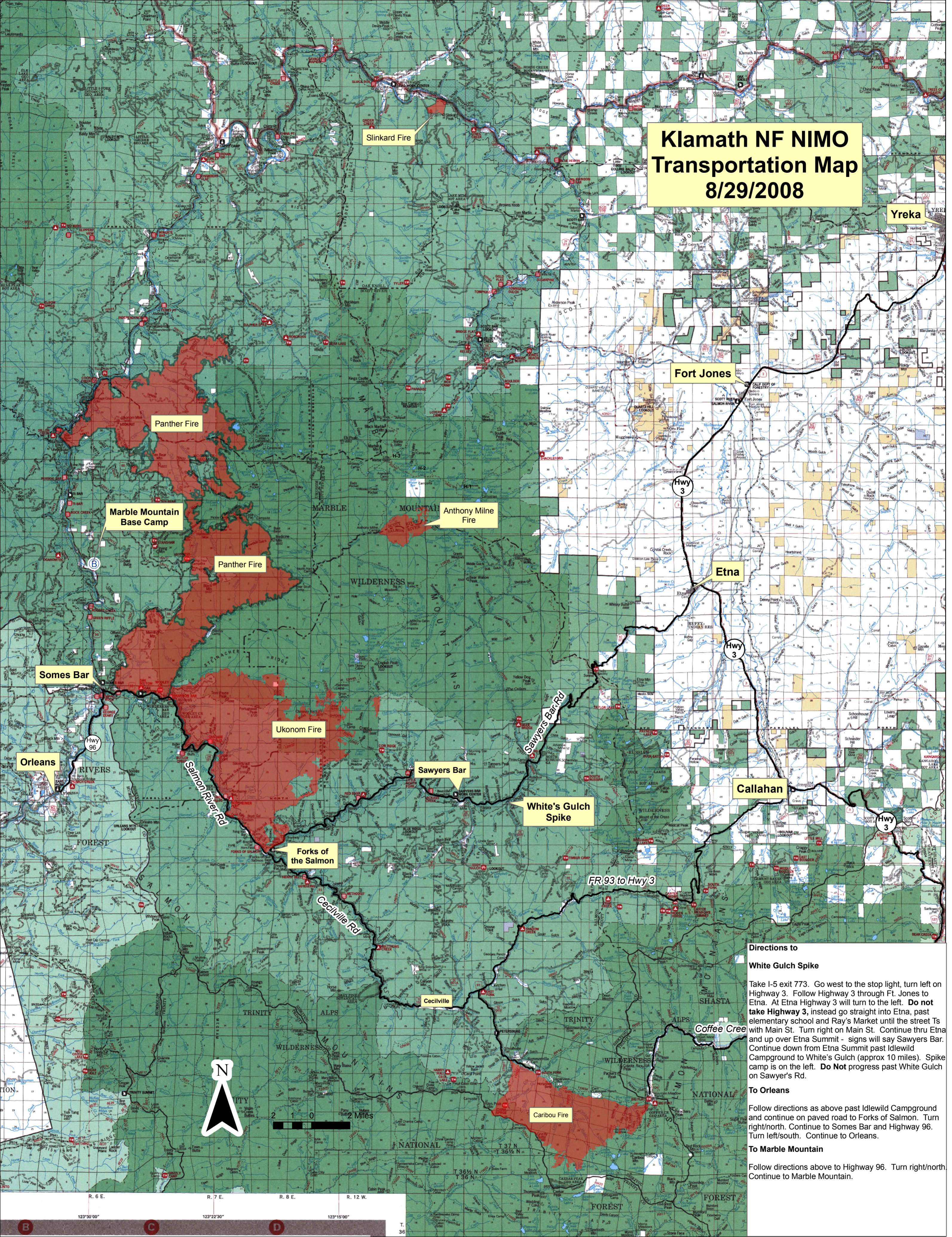


Klamath NF NIMO Transportation Map 8/29/2008



Slinkard Fire

Panther Fire

Marble Mountain
Base Camp

Panther Fire

Anthony Milne
Fire

Ukonom Fire

Sawyers Bar

White's Gulch
Spike

Forks of
the Salmon

Cecilville

Caribou Fire

Yreka

Fort Jones

Hwy 3

Etna

Hwy 3

Callahan

Hwy 3

FR 93 to Hwy 3

Coffee Cree



2 1 0
Miles

Directions to

White Gulch Spike

Take I-5 exit 773. Go west to the stop light, turn left on Highway 3. Follow Highway 3 through Ft. Jones to Etna. At Etna Highway 3 will turn to the left. **Do not take Highway 3**, instead go straight into Etna, past elementary school and Ray's Market until the street Ts with Main St. Turn right on Main St. Continue thru Etna and up over Etna Summit - signs will say Sawyers Bar. Continue down from Etna Summit past Idlewild Campground to White's Gulch (approx 10 miles). Spike camp is on the left. **Do Not** progress past White Gulch on Sawyer's Rd.

To Orleans

Follow directions as above past Idlewild Campground and continue on paved road to Forks of Salmon. Turn right/north. Continue to Somes Bar and Highway 96. Turn left/south. Continue to Orleans.

To Marble Mountain

Follow directions above to Highway 96. Turn right/north. Continue to Marble Mountain.

R. 6 E. R. 7 E. R. 8 E. R. 12 W.

123°30'00" 123°22'30" 123°15'00"