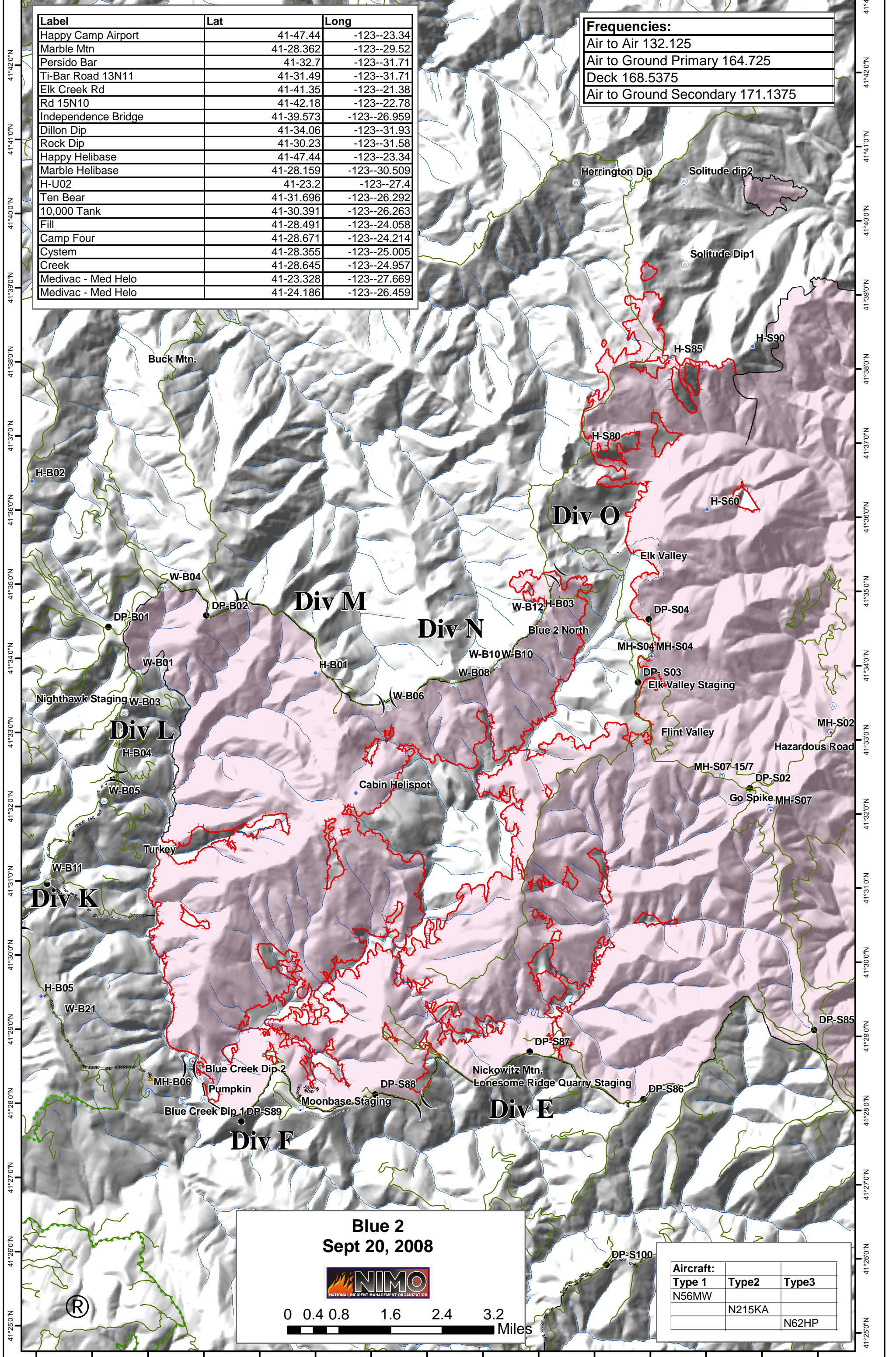


123°52'0"W 123°51'0"W 123°50'0"W 123°49'0"W 123°48'0"W 123°47'0"W 123°46'0"W 123°45'0"W 123°44'0"W 123°43'0"W 123°42'0"W 123°41'0"W 123°40'0"W 123°39'0"W 123°38'0"W

Label	Lat	Long
Happy Camp Airport	41-47.44	-123--23.34
Marble Mtn	41-28.362	-123--29.52
Persido Bar	41-32.7	-123--31.71
Ti-Bar Road 13N11	41-31.49	-123--31.71
Elk Creek Rd	41-41.35	-123--21.38
Rd 15N10	41-42.18	-123--22.78
Independence Bridge	41-39.573	-123--26.959
Dillon Dip	41-34.06	-123--31.93
Rock Dip	41-30.23	-123--31.58
Happy Helibase	41-47.44	-123--23.34
Marble Helibase	41-28.159	-123--30.509
H-U02	41-23.2	-123--27.4
Ten Bear	41-31.696	-123--26.292
10,000 Tank	41-30.391	-123--26.263
Fill	41-28.491	-123--24.058
Camp Four	41-28.671	-123--24.214
Cystem	41-28.355	-123--25.005
Creek	41-28.645	-123--24.957
Medivac - Med Helo	41-23.328	-123--27.669
Medivac - Med Helo	41-24.186	-123--26.459

Frequencies:		
Air to Air	132.125	
Air to Ground Primary	164.725	
Deck	168.5375	
Air to Ground Secondary	171.1375	



Blue 2
Sept 20, 2008

0 0.4 0.8 1.6 2.4 3.2 Miles

Aircraft:	Type 1	Type 2	Type 3
	N56MW		
		N215KA	
			N62HP

123°52'0"W 123°51'0"W 123°50'0"W 123°49'0"W 123°48'0"W 123°47'0"W 123°46'0"W 123°45'0"W 123°44'0"W 123°43'0"W 123°42'0"W 123°41'0"W 123°40'0"W 123°39'0"W 123°38'0"W