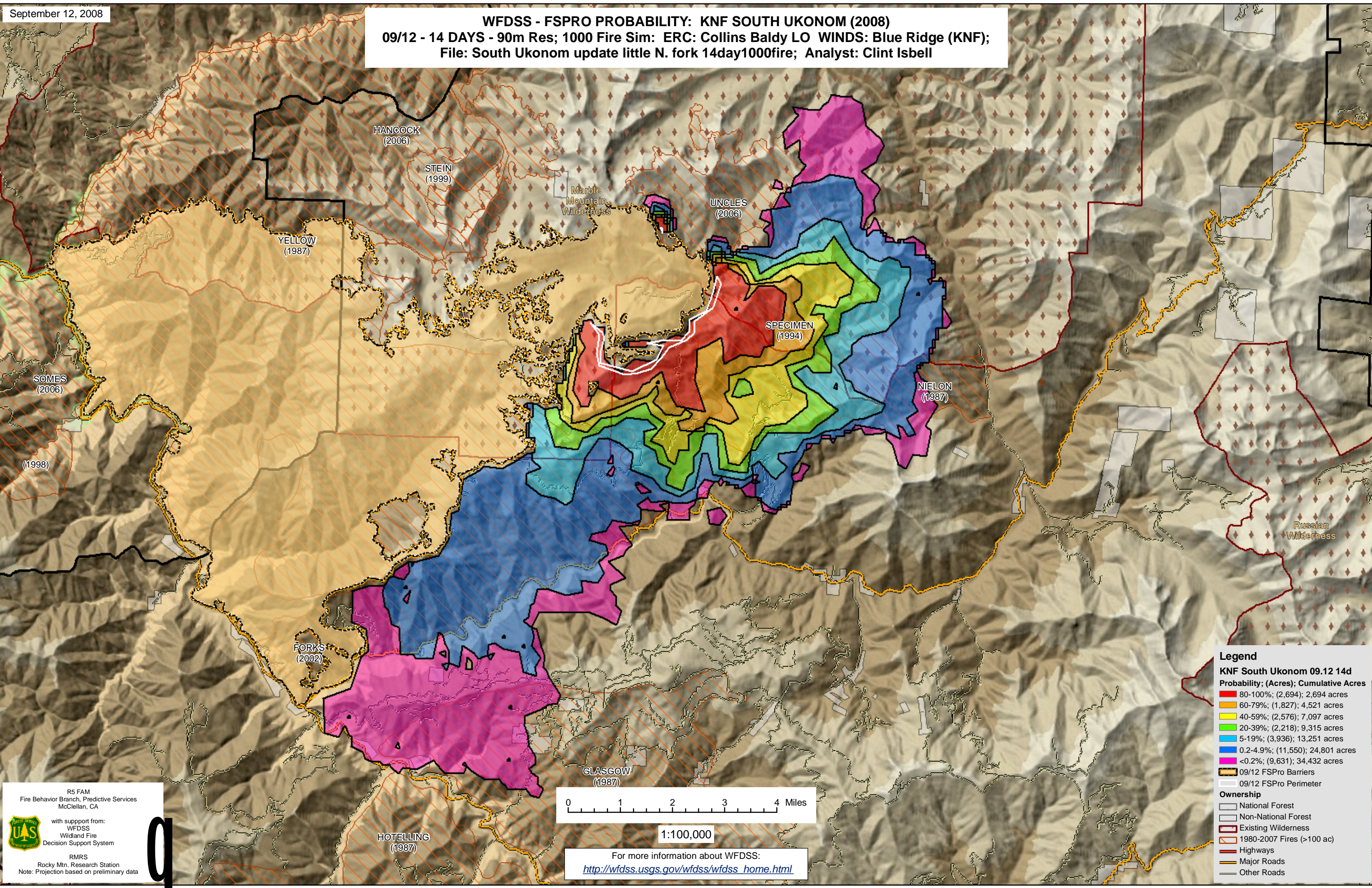


WFDSS - FSPRO PROBABILITY: KNF SOUTH UKONOM (2008)
09/12 - 14 DAYS - 90m Res; 1000 Fire Sim; ERC: Collins Baldy LO WINDS: Blue Ridge (KNF);
File: South Ukonom update little N. fork 14day1000fire; Analyst: Clint Isbell



Legend

KNF South Ukonom 09.12 14d Probability; (Acres); Cumulative Acres

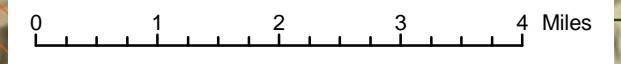
- 80-100%; (2,694); 2,694 acres
- 60-79%; (1,827); 4,521 acres
- 40-59%; (2,576); 7,097 acres
- 20-39%; (2,218); 9,315 acres
- 5-19%; (3,936); 13,251 acres
- 0.2-4.9%; (11,550); 24,801 acres
- <0.2%; (9,631); 34,432 acres

Ownership

- National Forest
- Non-National Forest
- Existing Wilderness
- 1980-2007 Fires (>100 ac)
- Highways
- Major Roads
- Other Roads

09/12 FSPRO Barriers

09/12 FSPRO Perimeter



1:100,000

For more information about WFDSS:
http://wfdss.usgs.gov/wfdss/wfdss_home.html

R5 FAM
Fire Behavior Branch, Predictive Services
McClellan, CA

with support from:
WFDSS
Wildland Fire
Decision Support System

RMRS
Rocky Mtn. Research Station
Note: Projection based on preliminary data

