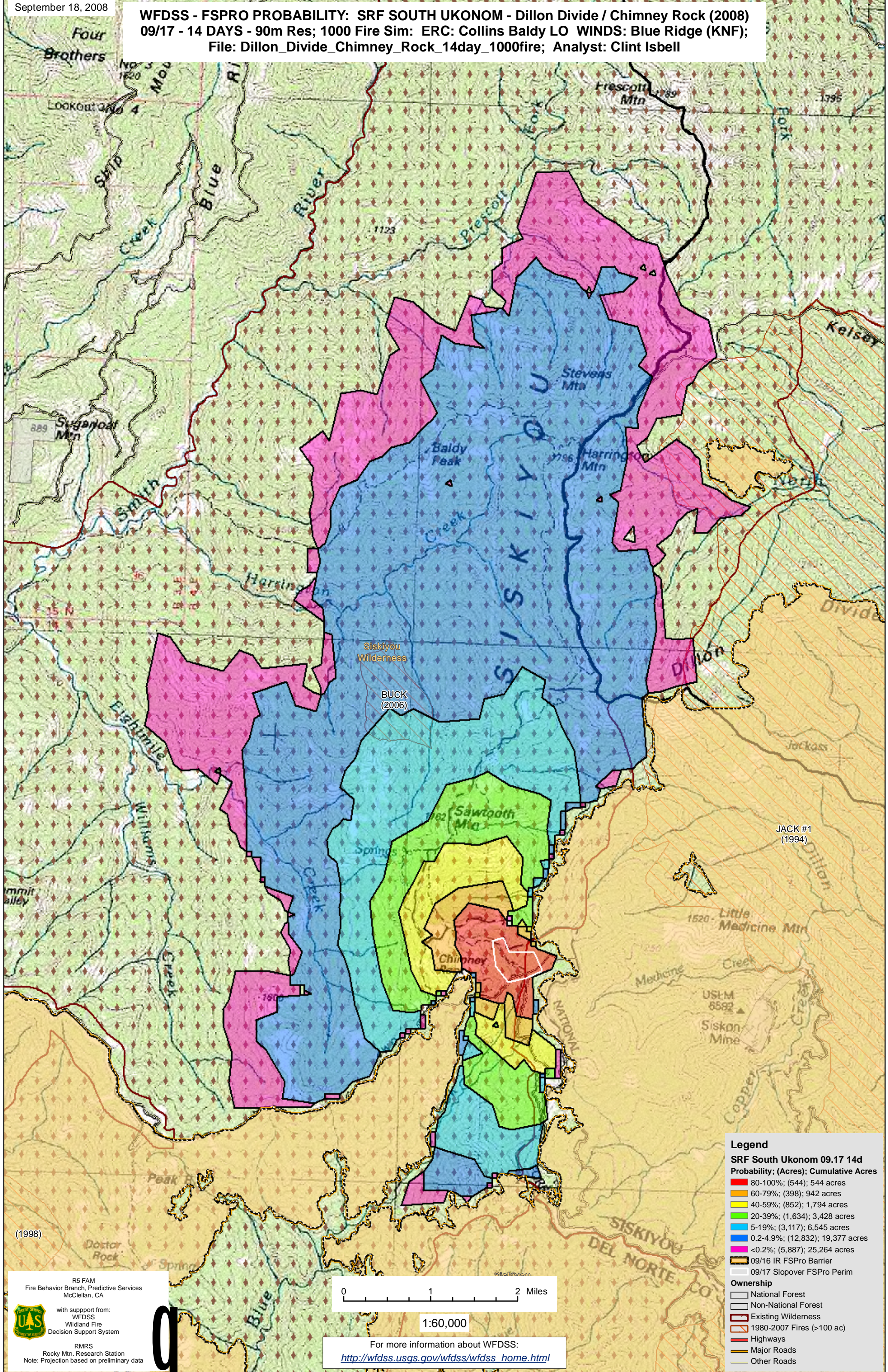


**WFDSS - FSPRO PROBABILITY: SRF SOUTH UKONOM - Dillon Divide / Chimney Rock (2008)**  
09/17 - 14 DAYS - 90m Res; 1000 Fire Sim; ERC: Collins Baldy LO WINDS: Blue Ridge (KNF);  
File: Dillon\_Divide\_Chimney\_Rock\_14day\_1000fire; Analyst: Clint Isbell



**Legend**

**SRF South Ukonom 09.17 14d Probability; (Acres); Cumulative Acres**

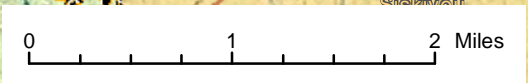
80-100%; (544); 544 acres
60-79%; (398); 942 acres
40-59%; (852); 1,794 acres
20-39%; (1,634); 3,428 acres
5-19%; (3,117); 6,545 acres
0.2-4.9%; (12,832); 19,377 acres
<0.2%; (5,887); 25,264 acres

**Ownership**

- National Forest
- Non-National Forest
- Existing Wilderness
- 1980-2007 Fires (>100 ac)
- Highways
- Major Roads
- Other Roads

**Other Symbols:**

- 09/16 IR FSPRO Barrier
- 09/17 Slopover FSPRO Perim



1:60,000

For more information about WFDSS:  
[http://wfdss.usgs.gov/wfdss/wfdss\\_home.html](http://wfdss.usgs.gov/wfdss/wfdss_home.html)

R5 FAM  
Fire Behavior Branch, Predictive Services  
McClellan, CA

with support from:  
WFDSS  
Wildland Fire  
Decision Support System

RMRS  
Rocky Mtn. Research Station  
Note: Projection based on preliminary data

(1998)

JACK #1 (1994)

BUCK (2006)