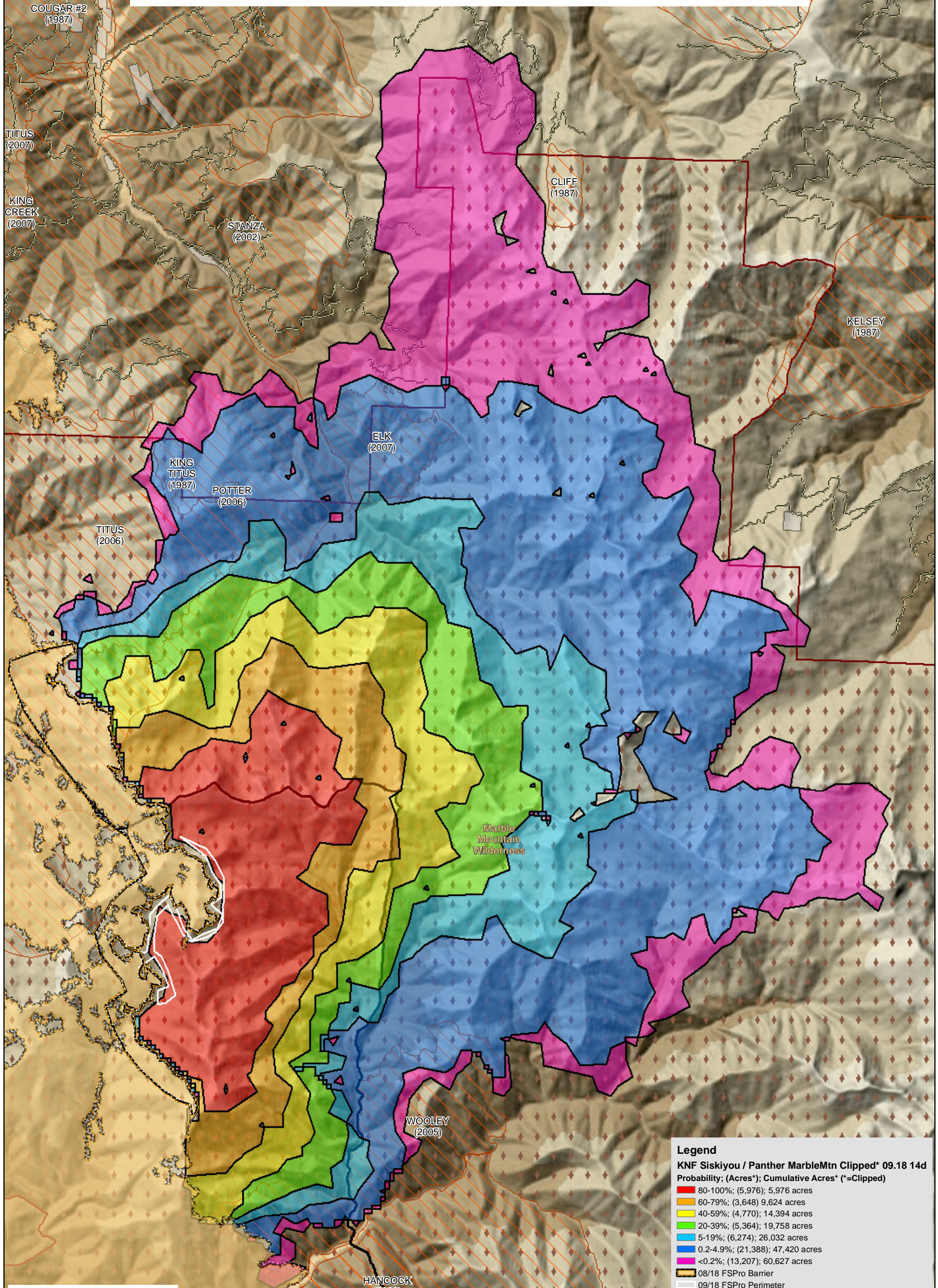


WFDSS - FSPRO PROBABILITY: KNF Siskiyou / Panther - Marble Mtn Branch (2008)
09/18 - 14 DAYS - 90m Res; 1000 Fire Sim; ERC: Collins Baldy LO WINDS: Blue Ridge (KNF);
File: Panther/Ukonom Marble Mtn Branch14 day 1000fire; Analyst: Clint Isbell



Legend

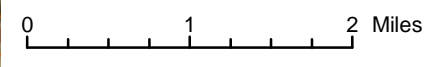
KNF Siskiyou / Panther MarbleMtn Clipped* 09.18 14d
Probability; (Acres*); Cumulative Acres* (*=Clipped)

- 80-100%; (5,976); 5,976 acres
- 60-79%; (3,648) 9,624 acres
- 40-59%; (4,770); 14,394 acres
- 20-39%; (5,364); 19,758 acres
- 5-19%; (6,274); 26,032 acres
- 0.2-4.9%; (21,388); 47,420 acres
- <0.2%; (13,207); 60,627 acres

- 08/18 FSPro Barrier
- 09/18 FSPro Perimeter

Ownership

- National Forest
- Non-National Forest
- Existing Wilderness
- 1980-2007 Fires (>100 ac)
- Highways
- Major Roads
- Other Roads



1:75,000

HANCOCK (2003)

YELLOW (1987)

R5 FAM
Fire Behavior Branch, Predictive Services
McClellan, CA



with support from:
WFDSS
Wildland Fire
Decision Support System

RMRS
Rocky Mtn. Research Station
Note: Projection based on preliminary data

For more information about WFDSS:

http://wfdss.usgs.gov/wfdss/wfdss_home.html