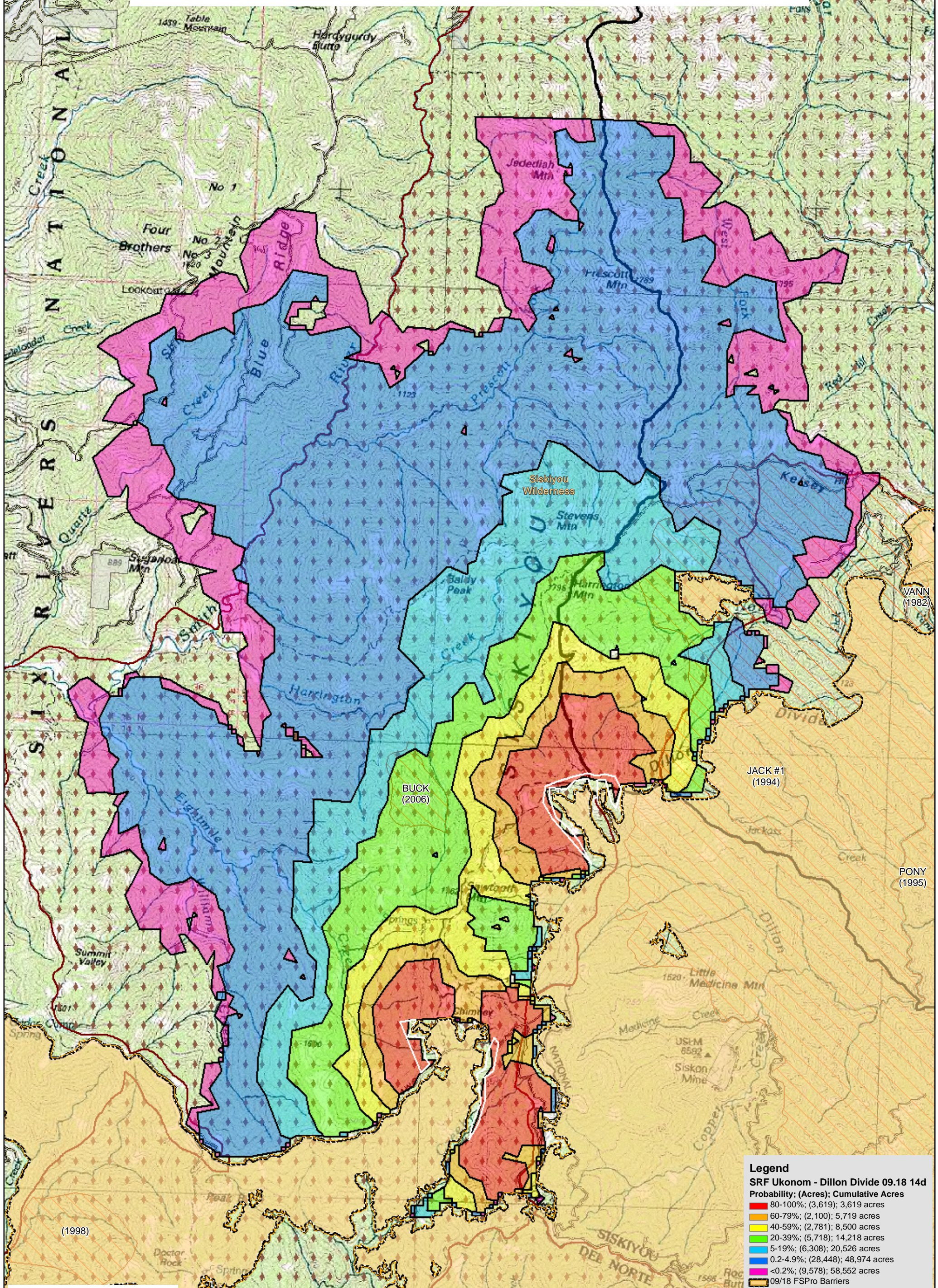


WFDSS - FSPRO PROBABILITY: SRF UKONOM - Dillon Divide / Chimney Rock (2008)
09/18 - 14 DAYS - 90m Res; 1000 Fire Sim; ERC: Collins Baldy LO WINDS: Blue Ridge (KNF);
File: Dilon_Divide_Chimney Rock Update 14 day; Analyst: Clint Isbell



Legend

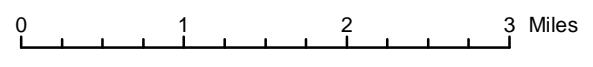
SRF Ukonom - Dillon Divide 09.18 14d
Probability; (Acres); Cumulative Acres

- 80-100%; (3,619); 3,619 acres
- 60-79%; (2,100); 5,719 acres
- 40-59%; (2,781); 8,500 acres
- 20-39%; (5,718); 14,218 acres
- 5-19%; (6,308); 20,526 acres
- 0.2-4.9%; (28,448); 48,974 acres
- <0.2%; (9,578); 58,552 acres

- 09/18 FSPRO Barriers
- 09/18 FSPRO Perim

Ownership

- National Forest
- Non-National Forest
- Existing Wilderness
- 1980-2007 Fires (>100 ac)
- Highways
- Major Roads
- Other Roads



1:75,000

For more information about WFDSS:
http://wfdss.usgs.gov/wfdss/wfdss_home.html

R5 FAM
Fire Behavior Branch, Predictive Services
McClellan, CA

with support from:
WFDSS
Wildland Fire
Decision Support System

RMRS
Rocky Mtn. Research Station
Note: Projection based on preliminary data

