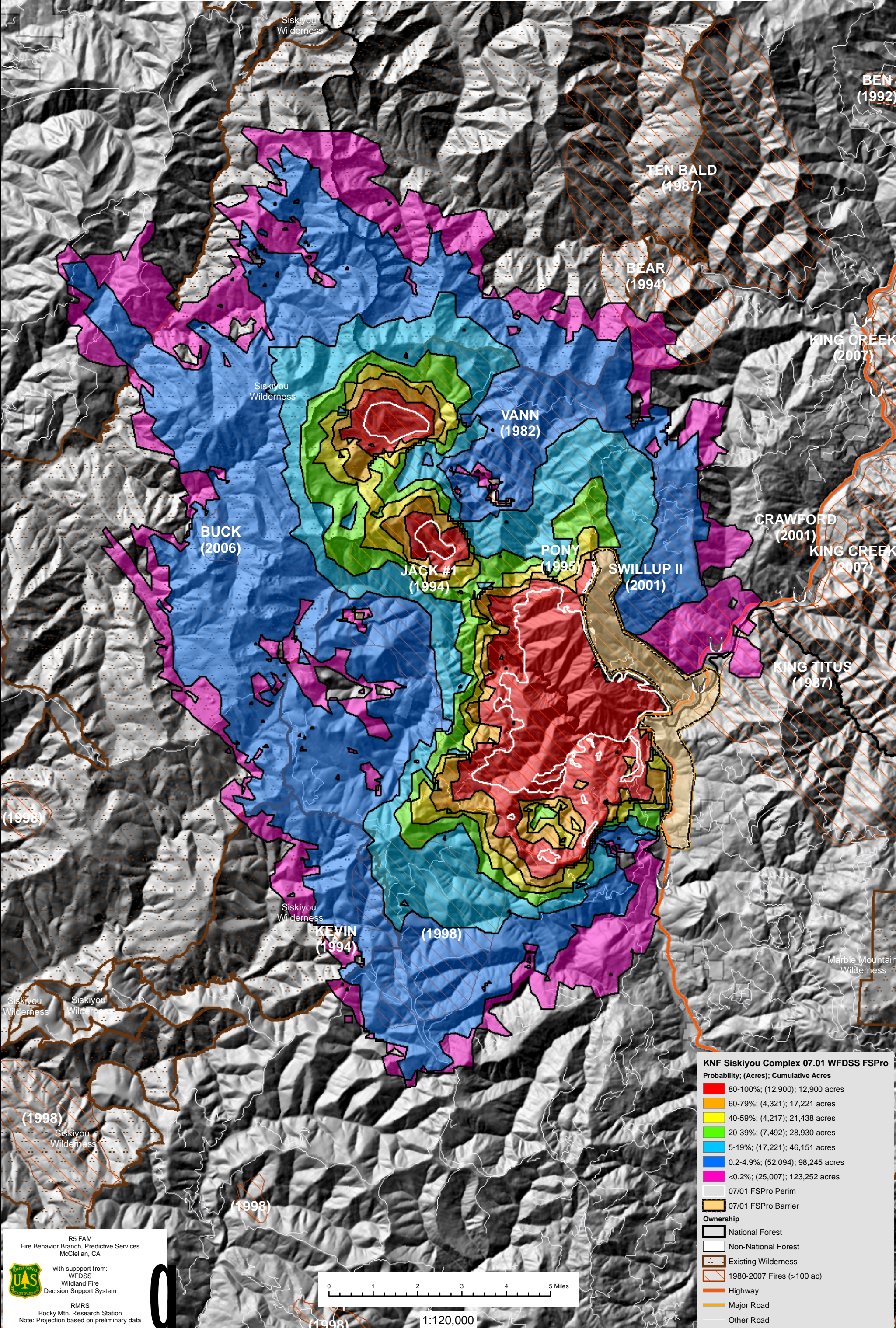


July 01, 2008

WFDSS - FSPRO PROBABILITY: KNF Siskiyou Complex (2008)
7 DAYS (07/01 - 07/07) - 90m Res, 1000 Fire Sim: ERC: Somes Bar; WINDS: Ship Mtn LO
File: 07.01.2008 Update 7 Day with Barrier 1000 Fires; Analyst: Larry Hood



KNF Siskiyou Complex 07.01 WFDSS FSPRO

Probability; (Acres); Cumulative Acres

- 80-100%; (12,900); 12,900 acres
- 60-79%; (4,321); 17,221 acres
- 40-59%; (4,217); 21,438 acres
- 20-39%; (7,492); 28,930 acres
- 5-19%; (17,221); 46,151 acres
- 0.2-4.9%; (52,094); 98,245 acres
- <0.2%; (25,007); 123,252 acres

07/01 FSPRO Perim

07/01 FSPRO Barrier

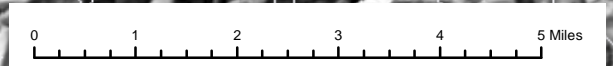
Ownership

- National Forest
- Non-National Forest
- Existing Wilderness
- 1980-2007 Fires (>100 ac)
- Highway
- Major Road
- Other Road

R5 FAM
Fire Behavior Branch, Predictive Services
McClellan, CA

with support from:
WFDSS
Wildland Fire
Decision Support System

RMRS
Rocky Mtn. Research Station
Note: Projection based on preliminary data



1:120,000