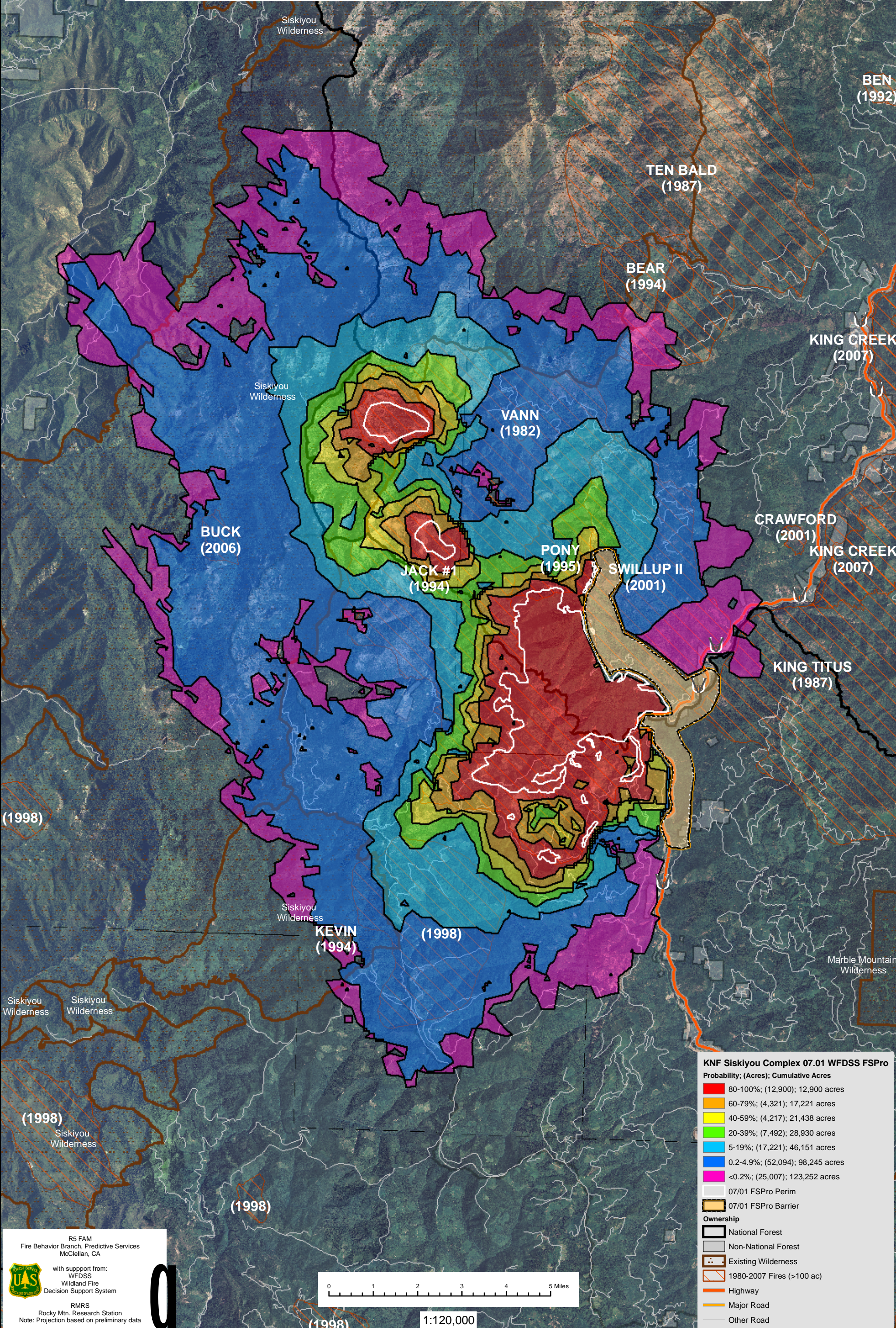


WFDSS - FSPRO PROBABILITY: KNF Siskiyou Complex (2008)  
7 DAYS (07/01 - 07/07) - 90m Res, 1000 Fire Sim: ERC: Somes Bar; WINDS: Ship Mtn LO  
File: 07.01.2008 Update 7 Day with Barrier 1000 Fires; Analyst: Larry Hood



**KNF Siskiyou Complex 07.01 WFDSS FSPRO**

Probability; (Acres); Cumulative Acres

80-100%	(12,900); 12,900 acres
60-79%	(4,321); 17,221 acres
40-59%	(4,217); 21,438 acres
20-39%	(7,492); 28,930 acres
5-19%	(17,221); 46,151 acres
0.2-4.9%	(52,094); 98,245 acres
<0.2%	(25,007); 123,252 acres

07/01 FSPRO Perim  
07/01 FSPRO Barrier

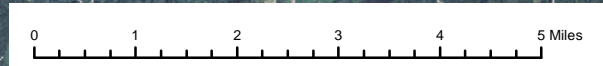
**Ownership**

- National Forest
- Non-National Forest
- Existing Wilderness
- 1980-2007 Fires (>100 ac)
- Highway
- Major Road
- Other Road

R5 FAM  
Fire Behavior Branch, Predictive Services  
McClellan, CA

with support from:  
WFDSS  
Wildland Fire  
Decision Support System

RMRS  
Rocky Mtn. Research Station  
Note: Projection based on preliminary data



1:120,000