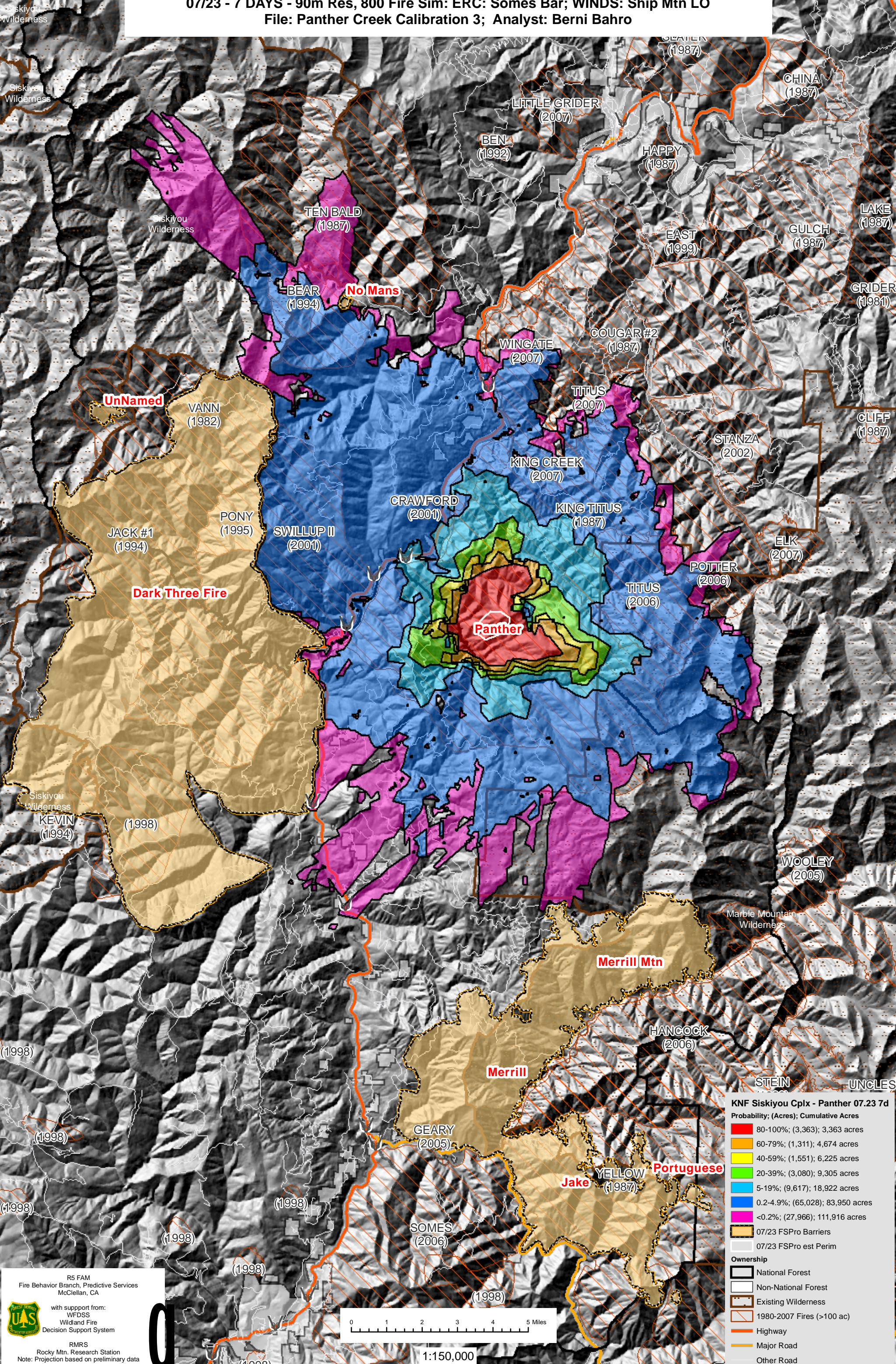


WFDSS - FSPRO PROBABILITY: KNF Siskiyou Cmplx - Panther Fire (2008)
07/23 - 7 DAYS - 90m Res, 800 Fire Sim: ERC: Somes Bar; WINDS: Ship Mtn LO
File: Panther Creek Calibration 3; Analyst: Berni Bahro

FORT/COPPER (1987)



KNF Siskiyou Cplx - Panther 07.23 7d
Probability; (Acres); Cumulative Acres

- 80-100%; (3,363); 3,363 acres
- 60-79%; (1,311); 4,674 acres
- 40-59%; (1,551); 6,225 acres
- 20-39%; (3,080); 9,305 acres
- 5-19%; (9,617); 18,922 acres
- 0.2-4.9%; (65,028); 83,950 acres
- <0.2%; (27,966); 111,916 acres

07/23 FSPro Barriers
07/23 FSPro est Perim

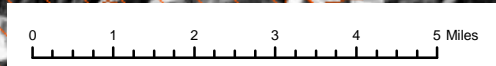
Ownership

- National Forest
- Non-National Forest
- Existing Wilderness
- 1980-2007 Fires (>100 ac)
- Highway
- Major Road
- Other Road

R5 FAM
Fire Behavior Branch, Predictive Services
McClellan, CA

with support from:
WFDSS
Wildland Fire
Decision Support System

RMRS
Rocky Mtn. Research Station
Note: Projection based on preliminary data



1:150,000