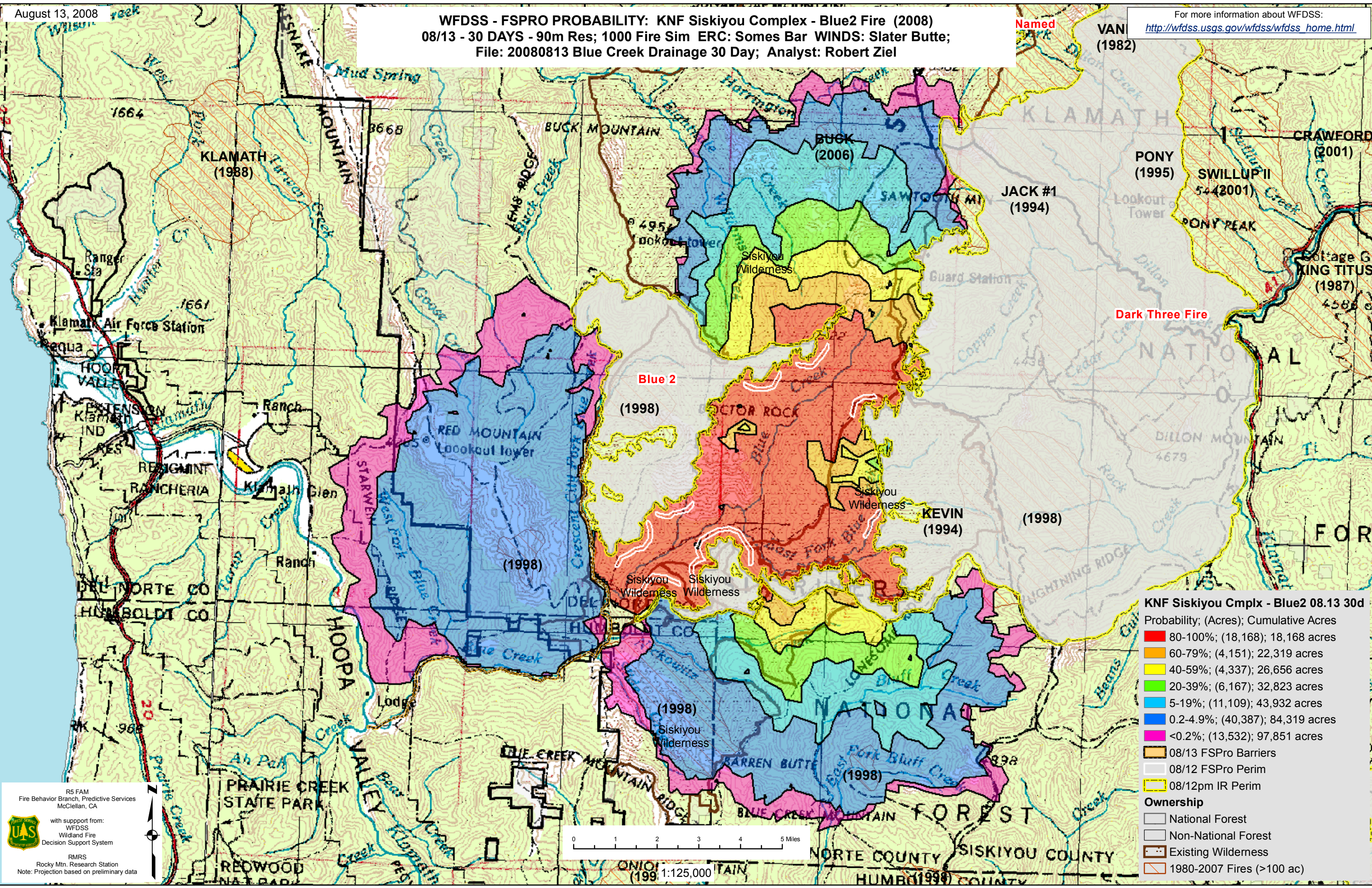


WFDSS - FSPRO PROBABILITY: KNF Siskiyou Complex - Blue2 Fire (2008)  
08/13 - 30 DAYS - 90m Res; 1000 Fire Sim ERC: Somes Bar WINDS: Slater Butte;  
File: 20080813 Blue Creek Drainage 30 Day; Analyst: Robert Ziel

For more information about WFDSS:  
[http://wfdss.usgs.gov/wfdss/wfdss\\_home.html](http://wfdss.usgs.gov/wfdss/wfdss_home.html)



**KNF Siskiyou Cmplx - Blue2 08.13 30d**  
Probability; (Acres); Cumulative Acres

- 80-100%; (18,168); 18,168 acres
- 60-79%; (4,151); 22,319 acres
- 40-59%; (4,337); 26,656 acres
- 20-39%; (6,167); 32,823 acres
- 5-19%; (11,109); 43,932 acres
- 0.2-4.9%; (40,387); 84,319 acres
- <0.2%; (13,532); 97,851 acres

08/13 FSPro Barriers  
08/12 FSPro Perim  
08/12pm IR Perim

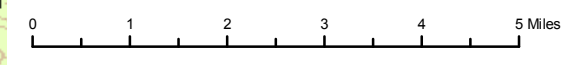
**Ownership**

- National Forest
- Non-National Forest
- Existing Wilderness
- 1980-2007 Fires (>100 ac)

R6 FAM  
Fire Behavior Branch, Predictive Services  
McClellan, CA

with support from:  
WFDSS  
Wildland Fire  
Decision Support System

RMRS  
Rocky Mtn. Research Station  
Note: Projection based on preliminary data



Scale: 1:125,000