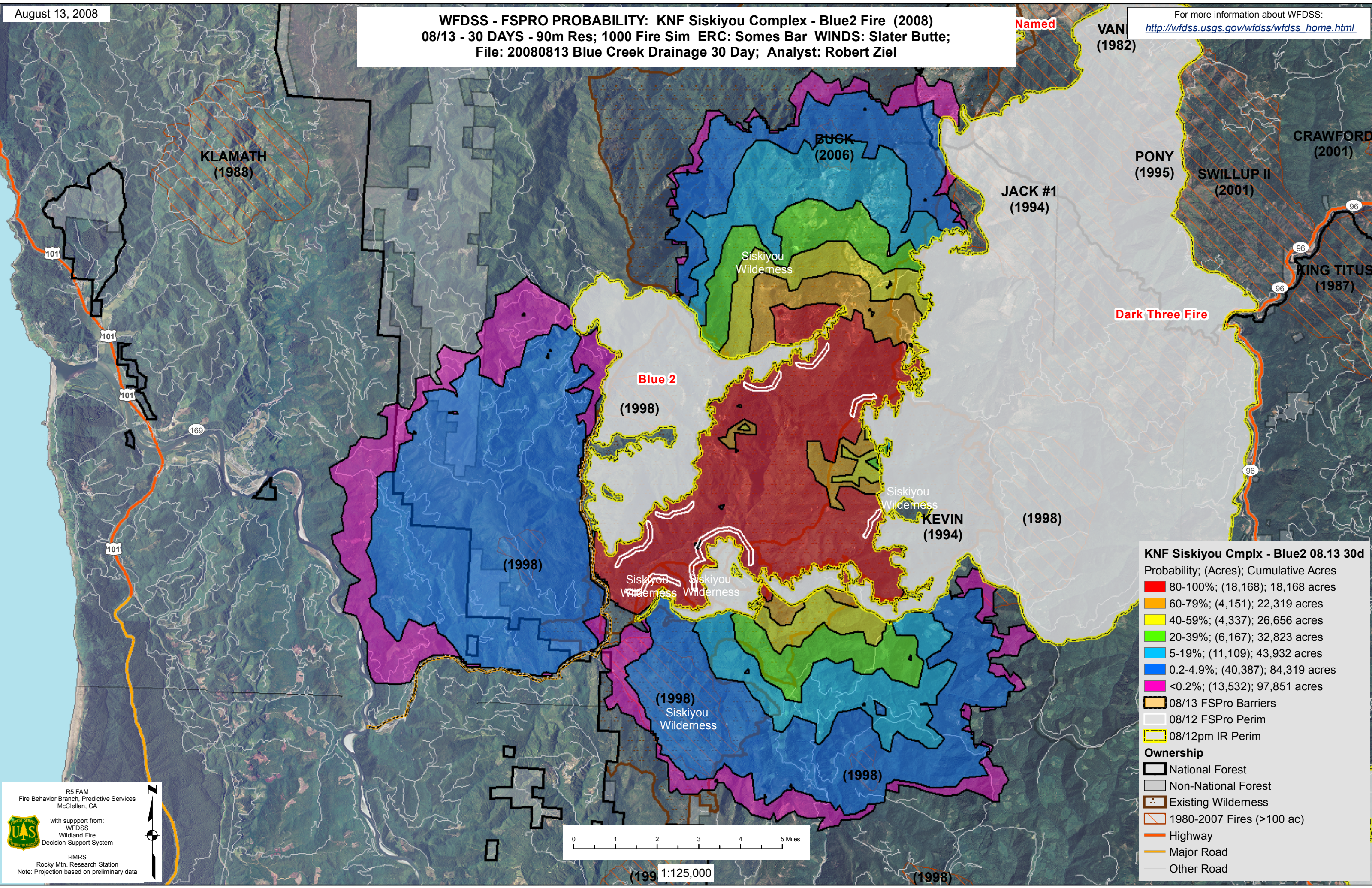


WFDSS - FSPRO PROBABILITY: KNF Siskiyou Complex - Blue2 Fire (2008)
08/13 - 30 DAYS - 90m Res; 1000 Fire Sim ERC: Somes Bar WINDS: Slater Butte;
File: 20080813 Blue Creek Drainage 30 Day; Analyst: Robert Ziel

For more information about WFDSS:
http://wfdss.usgs.gov/wfdss/wfdss_home.html



KNF Siskiyou Cmplx - Blue2 08.13 30d

Probability; (Acres); Cumulative Acres

- 80-100%; (18,168); 18,168 acres
- 60-79%; (4,151); 22,319 acres
- 40-59%; (4,337); 26,656 acres
- 20-39%; (6,167); 32,823 acres
- 5-19%; (11,109); 43,932 acres
- 0.2-4.9%; (40,387); 84,319 acres
- <0.2%; (13,532); 97,851 acres

- 08/13 FSPro Barriers
- 08/12 FSPro Perim
- 08/12pm IR Perim

- Ownership**
- National Forest
 - Non-National Forest
 - Existing Wilderness
 - 1980-2007 Fires (>100 ac)
 - Highway
 - Major Road
 - Other Road

R5 FAM
Fire Behavior Branch, Predictive Services
McClellan, CA

with support from:
WFDSS
Wildland Fire
Decision Support System

RMRS
Rocky Mtn. Research Station
Note: Projection based on preliminary data

0 1 2 3 4 5 Miles

1:125,000