



Siskiyou, CA

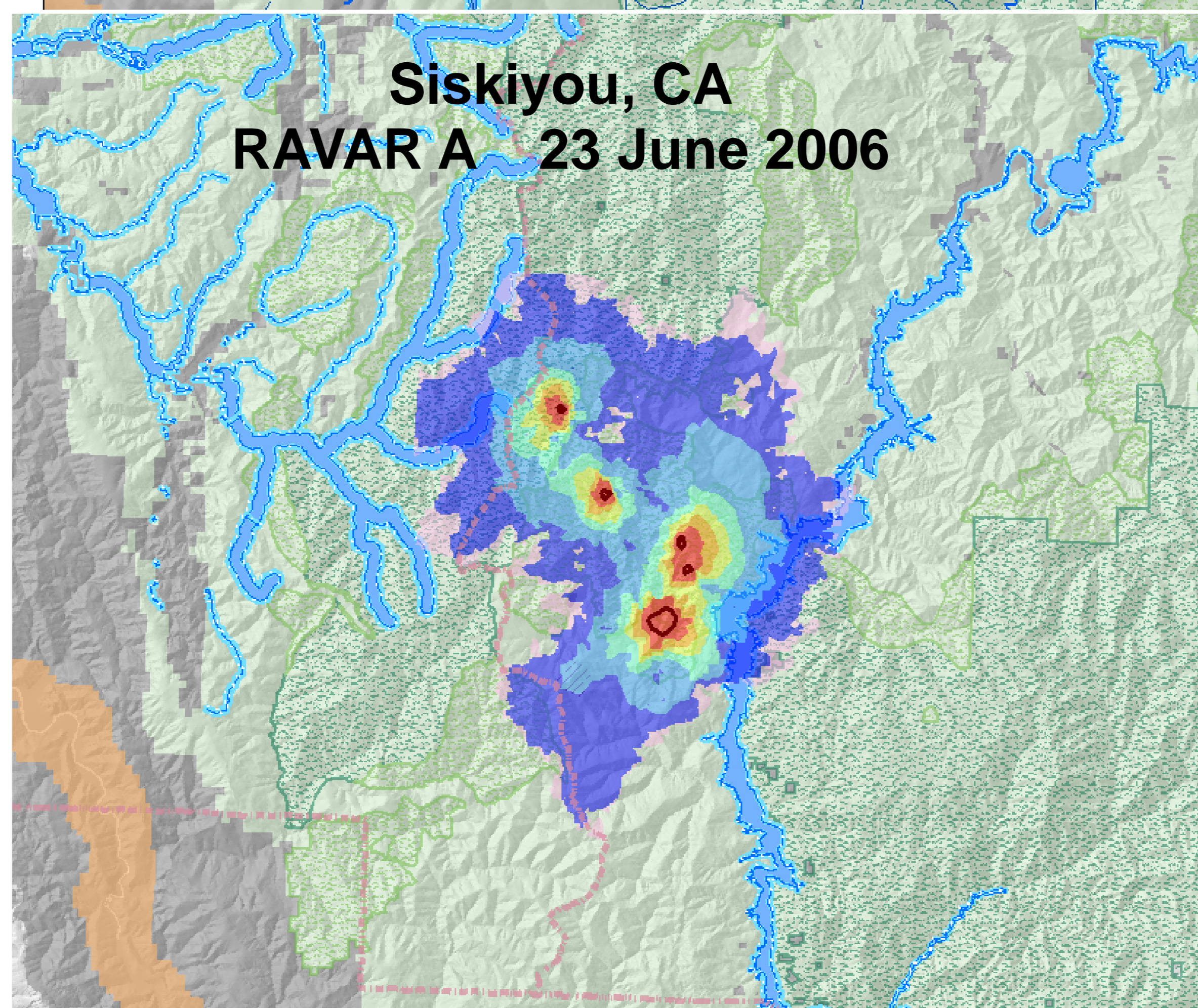
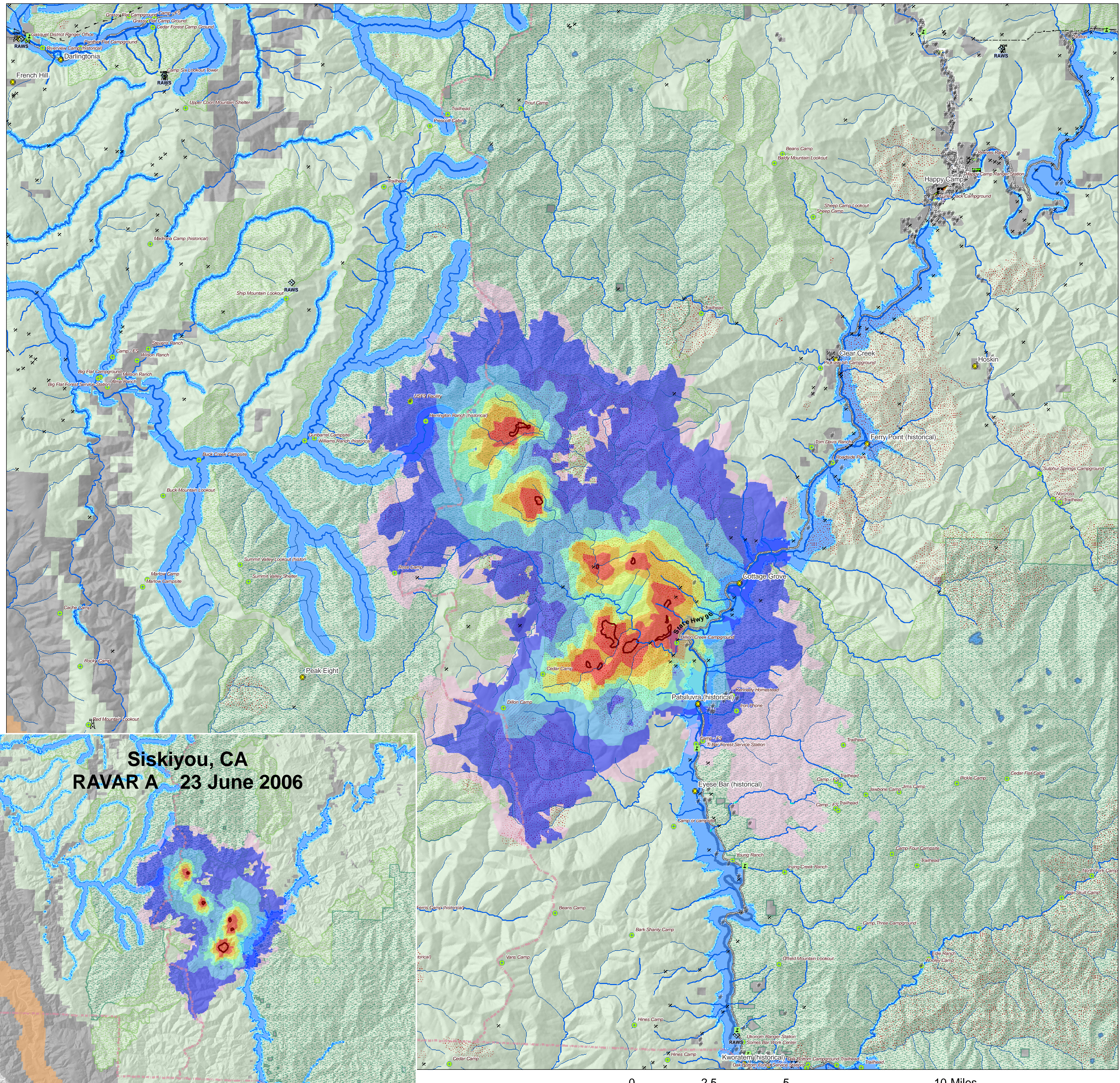
26 June 2008 T1_B_080626_jd

Major Values-at-Risk per
FSPRO Fire Spread Probabilities:
7 days as of 26 June 2008

RAVAR B-Map only

No written report - No significant
value change since last RAVAR analysis

- FS Pro Fire Perimeter: 26 June
- Past Fires 1994-2007
- FSPRO Fire Spread Probabilities**
- > 80 %
- 60 - 80 %
- 40 - 60 %
- 20 - 40 %
- 5 - 20 %
- 1 - 5 %
- < 1 %
- Building Clusters: Siskiyou County
- Building Clusters: Del Norte County
- RAWs Stations
- Water Supply: Intakes
- Water Treatment Plants
- Water Pipeline - Aqueduct - Canal
- Powerlines
- Power or Pumping Substation
- Communication Towers
- Airports
- Airport Runways
- Schools
- HAZMAT: Mines
- HAZMAT: Superfund Sites
- HAZMAT: Hazardous Waste
- Other Landmarks
- Interstates
- Major Roads
- County Boundary
- Jurisdiction**
- Private
- BIA
- USFS
- Inventoried Roadless
- Designated Wilderness
- Primitive RNA
- Wild-Scenic-Rec Rivers



*Building Clusters represent the center of parcels where county assessor records indicate taxable improvements are present. One or more structures and other improvements may exist proximate to these point locations.

** Structure points are derived by the USGS through supervised analysis of high resolution aerial photography. Structures within dense canopy may not be mapped.

***Recreation residences and special use structures data are not supplied by USFS and are not identified or analyzed in this report for Siskiyou County.

CAUTION: Defer to air photos or local knowledge for exact structure and other feature locations.