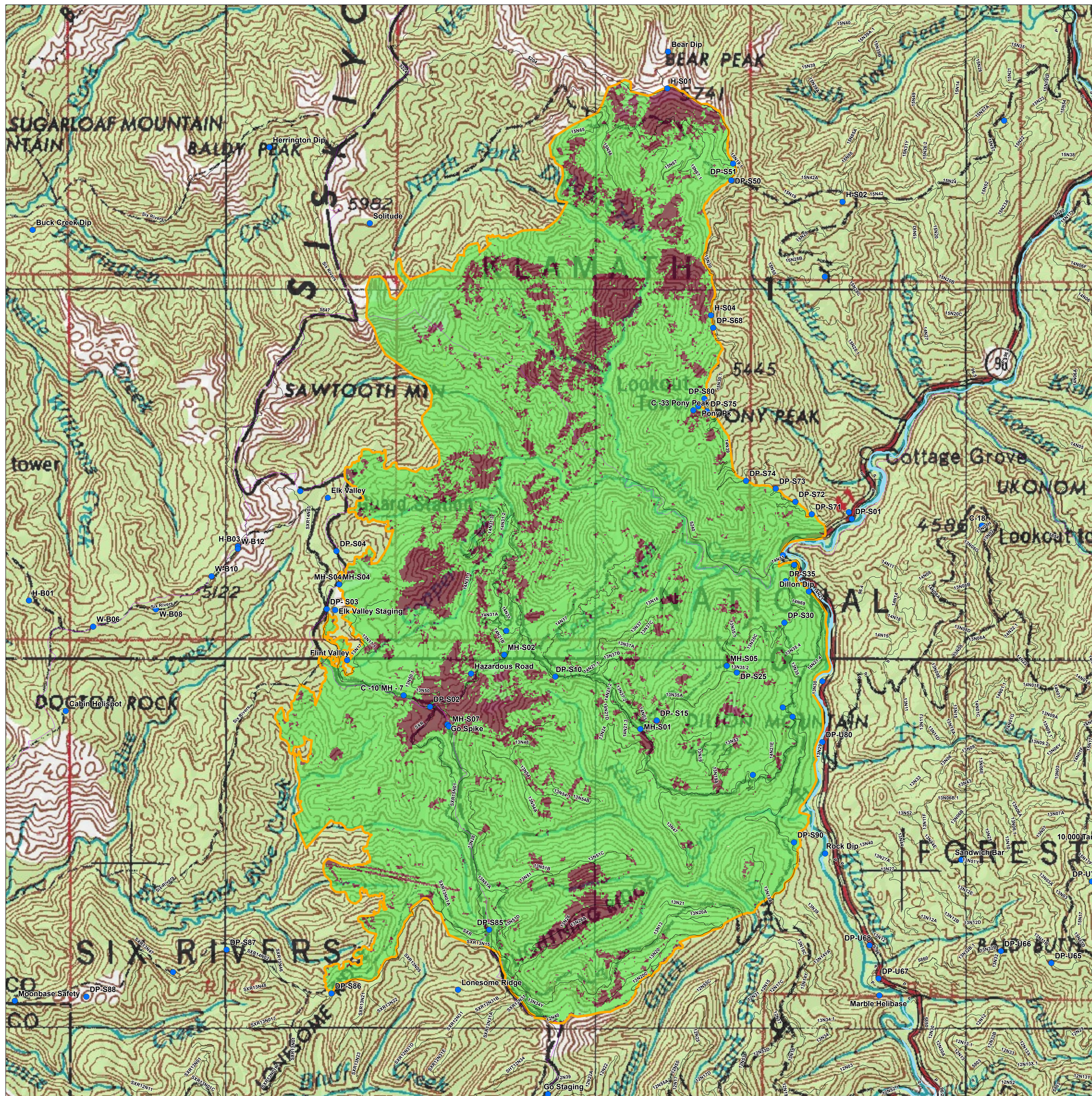


BARC Reburn Potential Siskiyou Complex Dark Three Fire 08/06/2008



Legend

- Roads
- Siskiyou IR Perimeter 08/06
- Ranger District
- BARC Landsat Image, 08/06/2008 @ 1230**
- Reburn Potential
- Reburn Unlikely

Postfire Vegetation Condition
Dark Three Fire / Siskiyou Complex
08/06/2008
Landsat dNBR raster imagery was processed by
and obtained from RSAC.
The 'post fire' scene was captured
on 08/06/2008.
Image provided as 256-class and 4-class raster files.
Thresholds of 4 classes
- Unburned, Low, Moderate, and High severity
were ground-truthed by qualitative sampling
conducted by LTAN and THSP.

*BARC values less than 121 were determined
to have moderate to high re-burn potential.
Postfire vegetation condition was least unchanged from
pre-fire to post-fire imagery.

*Values 121 to 130 had marginal re-burn potential
at present, however, scorched aerial fuels
beginning to drop to surface,
will increase potential significantly,
therefore these values were included
in 'Reburn Likely' areas.

*Values greater than 130 were assumed to have
minimal to no re-burn potential. Greatest change
in post-fire vegetation condition occurred here,
indicating greatest consumption of fuels.

