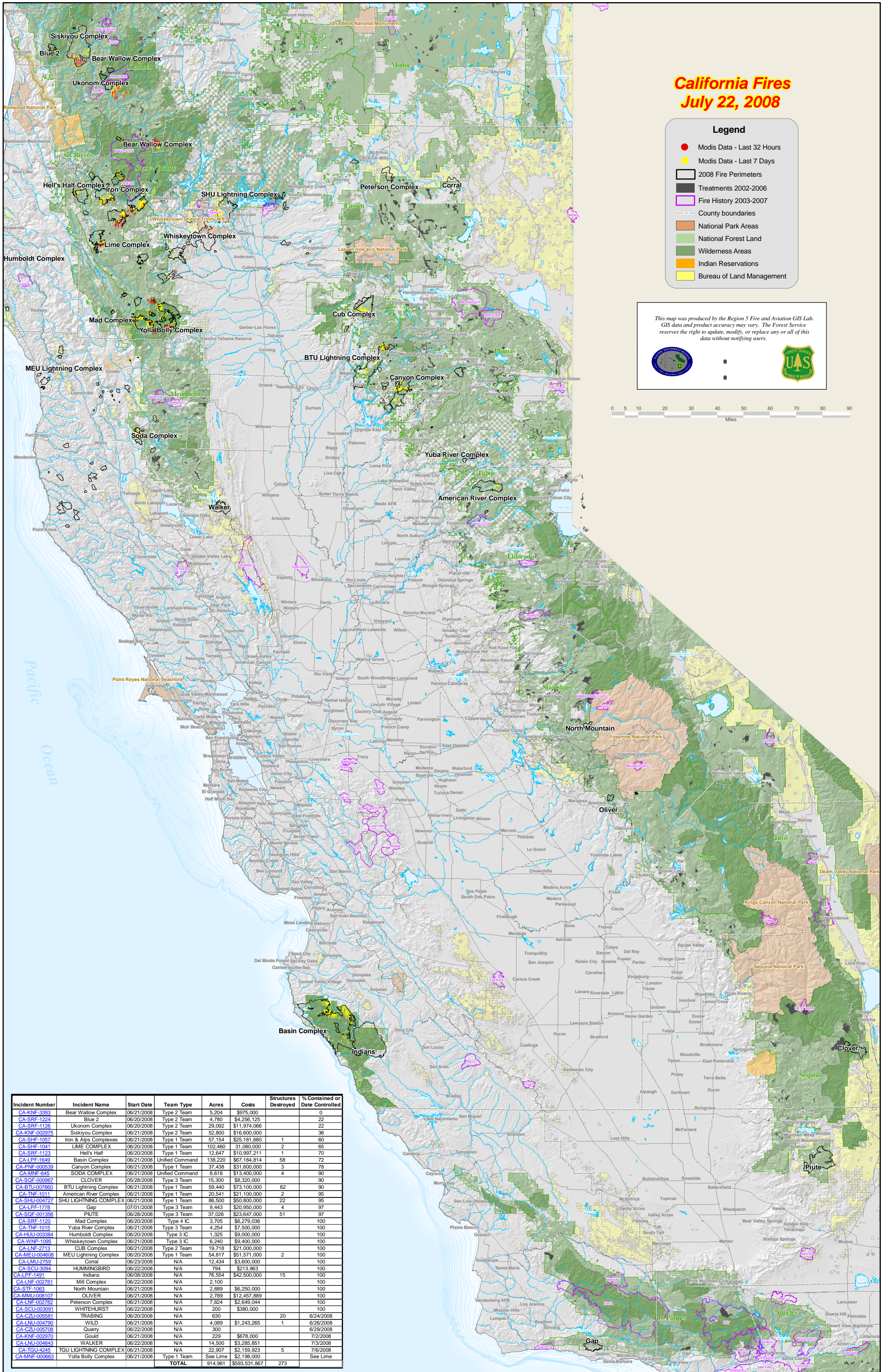
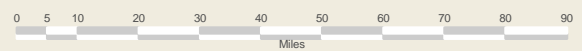


California Fires July 22, 2008

Legend

- Modis Data - Last 32 Hours
- Modis Data - Last 7 Days
- 2008 Fire Perimeters
- Treatments 2002-2006
- Fire History 2003-2007
- County boundaries
- National Park Areas
- National Forest Land
- Wilderness Areas
- Indian Reservations
- Bureau of Land Management

This map was produced by the Region 5 Fire and Aviation GIS Lab. GIS data and product accuracy may vary. The Forest Service reserves the right to update, modify, or replace any or all of this data without notifying users.



Incident Number	Incident Name	Start Date	Team Type	Acres	Costs	Structures Destroyed	% Contained or Date Controlled
CA-KNF-3393	Bear Wallow Complex	06/21/2008	Type 2 Team	5,204	\$975,000		0
CA-SRF-1224	Blue 2	06/20/2008	Type 2 Team	4,780	\$4,256,125		22
CA-SRF-1126	Ukonom Complex	06/21/2008	Type 2 Team	29,092	\$11,974,066		22
CA-KNF-002975	Siskiyou Complex	06/21/2008	Type 2 Team	52,800	\$16,600,000		36
CA-SHF-1057	Iron & Alps Complexes	06/21/2008	Type 1 Team	57,154	\$25,181,880	1	60
CA-SHF-1041	LIME COMPLEX	06/20/2008	Type 1 Team	102,460	\$1,080,000	2	65
CA-SRF-1123	Hell's Half	06/20/2008	Type 1 Team	12,647	\$10,997,211	1	70
CA-LPF-1649	Basin Complex	06/21/2008	Unified Command	138,220	\$67,184,814	58	72
CA-PNF-000539	Canyon Complex	06/21/2008	Type 1 Team	37,438	\$13,600,000	3	78
CA-MNF-645	SODA COMPLEX	06/21/2008	Unified Command	8,618	\$13,400,000	4	90
CA-SQF-000967	CLOVER	05/28/2008	Type 3 Team	15,300	\$8,320,000		90
CA-BTU-007660	BTU Lightning Complex	06/21/2008	Type 1 Team	59,440	\$73,100,000	82	90
CA-TNF-1011	American River Complex	06/21/2008	Type 1 Team	20,541	\$21,100,000	2	95
CA-SHU-004727	SHU LIGHTNING COMPLEX	06/21/2008	Type 1 Team	86,500	\$50,800,000	22	95
CA-LPF-1778	Gap	07/01/2008	Type 3 Team	9,443	\$20,950,000	4	97
CA-SQF-001356	PIUTE	06/28/2008	Type 3 Team	37,026	\$23,647,000	51	97
CA-SRF-1120	Mad Complex	06/20/2008	Type 4 IC	3,705	\$6,279,036		100
CA-TNF-1015	Yuba River Complex	06/21/2008	Type 3 Team	4,254	\$7,500,000		100
CA-HLU-003384	Humboldt Complex	06/20/2008	Type 3 IC	1,325	\$9,000,000		100
CA-WNF-1026	Whiskeytown Complex	06/21/2008	Type 3 IC	6,240	\$9,400,000		100
CA-LNF-2713	CUB Complex	06/21/2008	Type 2 Team	13,718	\$21,000,000		100
CA-MEU-004608	MEU Lightning Complex	06/20/2008	Type 1 Team	54,817	\$51,571,000	2	100
CA-LMU-2759	Corral	06/23/2008	N/A	12,434	\$3,600,000		100
CA-SCU-3094	HUMMINGBIRD	06/22/2008	N/A	794	\$213,963		100
CA-LPF-1491	Indians	06/08/2008	N/A	76,554	\$42,500,000	15	100
CA-LNF-002781	Mill Complex	06/22/2008	N/A	2,100			100
CA-STF-1063	North Mountain	06/21/2008	N/A	2,889	\$6,250,000		100
CA-MMU-008107	OLIVER	06/21/2008	N/A	2,789	\$12,457,889		100
CA-LNF-002782	Peterson Complex	06/21/2008	N/A	7,824	\$2,649,044		100
CA-SCU-003091	WHITEHURST	06/22/2008	N/A	200	\$380,000		100
CA-CZU-005581	TRABING	06/20/2008	N/A	630		20	6/24/2008
CA-LNU-004790	WILD	06/21/2008	N/A	4,089	\$1,243,265	1	6/26/2008
CA-CZU-005708	Quarry	06/22/2008	N/A	300			6/29/2008
CA-KNF-002970	Gould	06/21/2008	N/A	229	\$678,000		7/2/2008
CA-LNU-004843	WALKER	06/22/2008	N/A	14,500	\$3,285,851		7/3/2008
CA-TGU-4245	TGU LIGHTNING COMPLEX	06/21/2008	N/A	22,907	\$2,159,823	5	7/6/2008
CA-MNF-000663	Yolla Bolly Complex	06/21/2008	Type 1 Team	See Lime	\$2,198,000		See Lime
TOTAL				914,961	\$593,531,867	273	