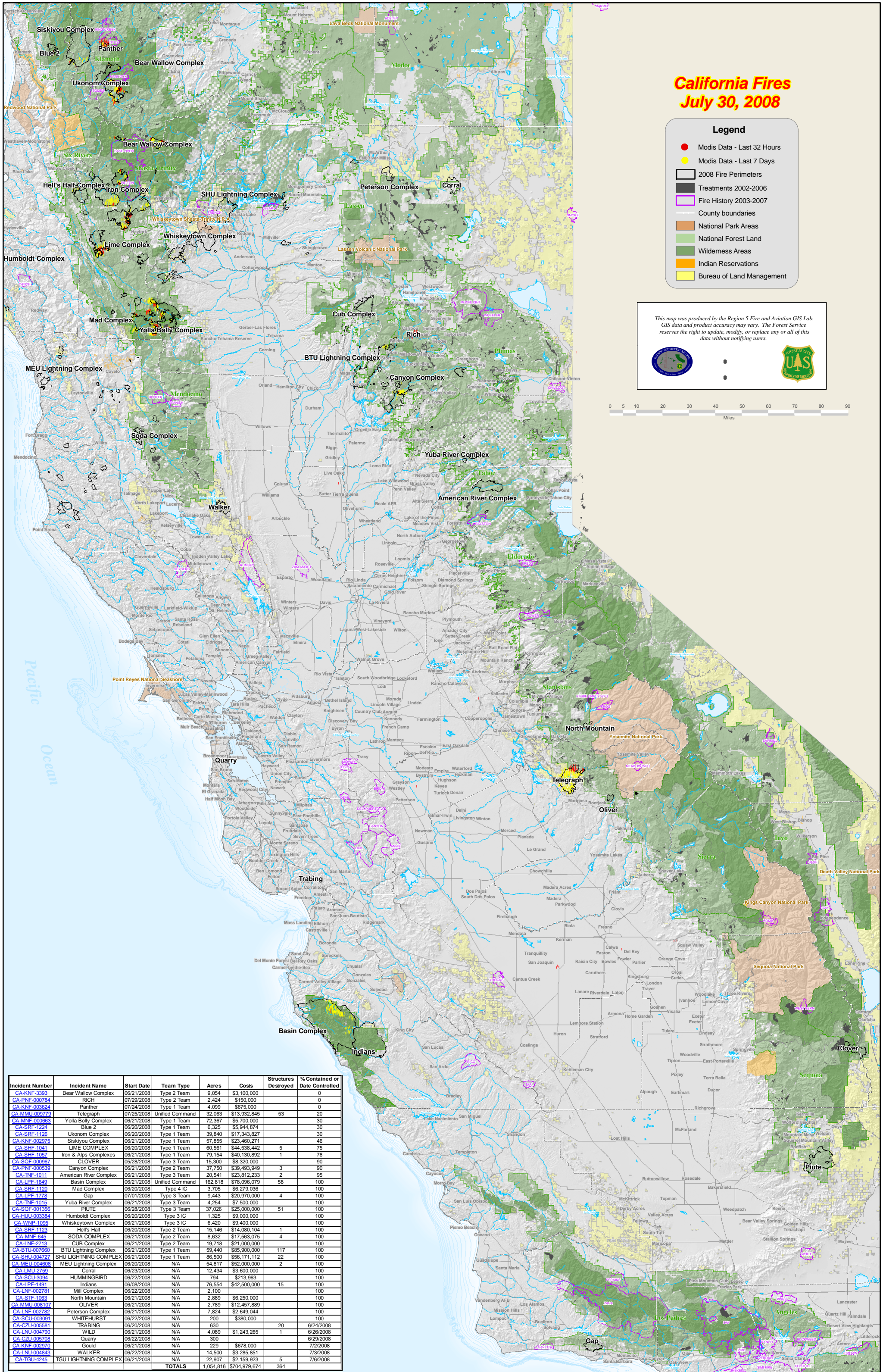
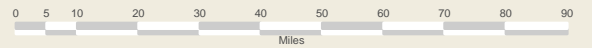


California Fires July 30, 2008

Legend

- Modis Data - Last 32 Hours
- Modis Data - Last 7 Days
- 2008 Fire Perimeters
- Treatments 2002-2006
- Fire History 2003-2007
- County boundaries
- National Park Areas
- National Forest Land
- Wilderness Areas
- Indian Reservations
- Bureau of Land Management

This map was produced by the Region 5 Fire and Aviation GIS Lab. GIS data and product accuracy may vary. The Forest Service reserves the right to update, modify, or replace any or all of this data without notifying users.



Incident Number	Incident Name	Start Date	Team Type	Acres	Costs	Structures Destroyed	% Contained or Date Controlled
CA-KNF-3393	Bear Wallow Complex	06/21/2008	Type 2 Team	9,054	\$3,100,000		0
CA-PNF-000784	RICH	07/29/2008	Type 2 Team	2,424	\$150,000		0
CA-KNF-003624	Panther	07/24/2008	Type 1 Team	4,099	\$675,000		0
CA-MMU-009779	Telegraph	07/25/2008	Unified Command	32,063	\$13,932,845	53	20
CA-MNF-000663	Yolla Bolly Complex	06/21/2008	Type 1 Team	72,367	\$5,700,000		30
CA-SRF-1224	Blue 2	06/20/2008	Type 1 Team	6,325	\$5,944,874		30
CA-SRF-1126	Ukonom Complex	06/20/2008	Type 1 Team	39,840	\$17,343,827		30
CA-KNF-002975	Siskiyou Complex	06/21/2008	Type 1 Team	57,855	\$23,460,271		46
CA-SHF-1041	LIME COMPLEX	06/20/2008	Type 1 Team	60,561	\$44,538,442		75
CA-SHF-1057	Iron & Alps Complexes	06/21/2008	Type 1 Team	79,154	\$40,130,892		78
CA-SQF-000967	CLOVER	05/28/2008	Type 3 Team	15,300	\$8,320,000		90
CA-PNF-000539	Canyon Complex	06/21/2008	Type 2 Team	37,750	\$39,493,949		90
CA-PNF-1011	American River Complex	06/21/2008	Type 3 Team	20,541	\$23,812,233		95
CA-LPF-1649	Basin Complex	06/21/2008	Unified Command	162,818	\$78,096,079	58	100
CA-SRF-1120	Mad Complex	06/20/2008	Type 4 IC	3,705	\$6,279,036		100
CA-LPF-1778	Gap	07/01/2008	Type 3 Team	9,443	\$20,970,000		100
CA-TNF-1015	Yuba River Complex	06/21/2008	Type 3 Team	4,254	\$7,500,000		100
CA-SQF-001356	PIUTE	06/28/2008	Type 3 Team	37,026	\$25,000,000	51	100
CA-HLU-003384	Humboldt Complex	06/20/2008	Type 3 IC	1,325	\$9,000,000		100
CA-WNP-1095	Whiskeytown Complex	06/21/2008	Type 3 IC	6,420	\$9,400,000		100
CA-SRF-1123	Hell's Half	06/20/2008	Type 2 Team	15,146	\$14,080,104		100
CA-MNF-645	SODA COMPLEX	06/21/2008	Type 2 Team	8,632	\$17,563,075		100
CA-LNF-2713	CUB Complex	06/21/2008	Type 2 Team	19,718	\$21,000,000		100
CA-BTU-007660	BTU Lightning Complex	06/21/2008	Type 1 Team	59,440	\$85,900,000	117	100
CA-SHU-004727	SHU LIGHTNING COMPLEX	06/21/2008	Type 1 Team	86,500	\$56,171,112	22	100
CA-MEU-004608	MEU Lightning Complex	06/20/2008	N/A	54,817	\$52,000,000	2	100
CA-LMU-2759	Corral	06/23/2008	N/A	12,434	\$3,600,000		100
CA-SCU-3094	HUMMINGBIRD	06/22/2008	N/A	794	\$213,963		100
CA-LPF-1491	Indians	06/08/2008	N/A	76,554	\$42,500,000	15	100
CA-LNF-002781	Mill Complex	06/22/2008	N/A	2,100			100
CA-STF-1063	North Mountain	06/21/2008	N/A	2,889	\$6,250,000		100
CA-MMU-008107	OLIVER	06/21/2008	N/A	2,789	\$12,457,889		100
CA-LNF-002782	Peterson Complex	06/21/2008	N/A	7,824	\$2,649,044		100
CA-SCU-003091	WHITEHURST	06/22/2008	N/A	200	\$380,000		100
CA-CZU-005581	TRABING	06/20/2008	N/A	630		1	6/24/2008
CA-LNU-004790	WILD	06/21/2008	N/A	4,089	\$1,243,265	20	6/26/2008
CA-CZU-005708	Quarry	06/22/2008	N/A	300		1	6/29/2008
CA-KNF-002970	Gould	06/21/2008	N/A	229	\$678,000		7/2/2008
CA-LNU-004843	WALKER	06/22/2008	N/A	14,500	\$3,285,851		7/3/2008
CA-TGU-4245	TGU LIGHTNING COMPLEX	06/21/2008	N/A	22,907	\$2,159,923	5	7/6/2008
TOTALS				1,054,816	\$704,979,674	364	