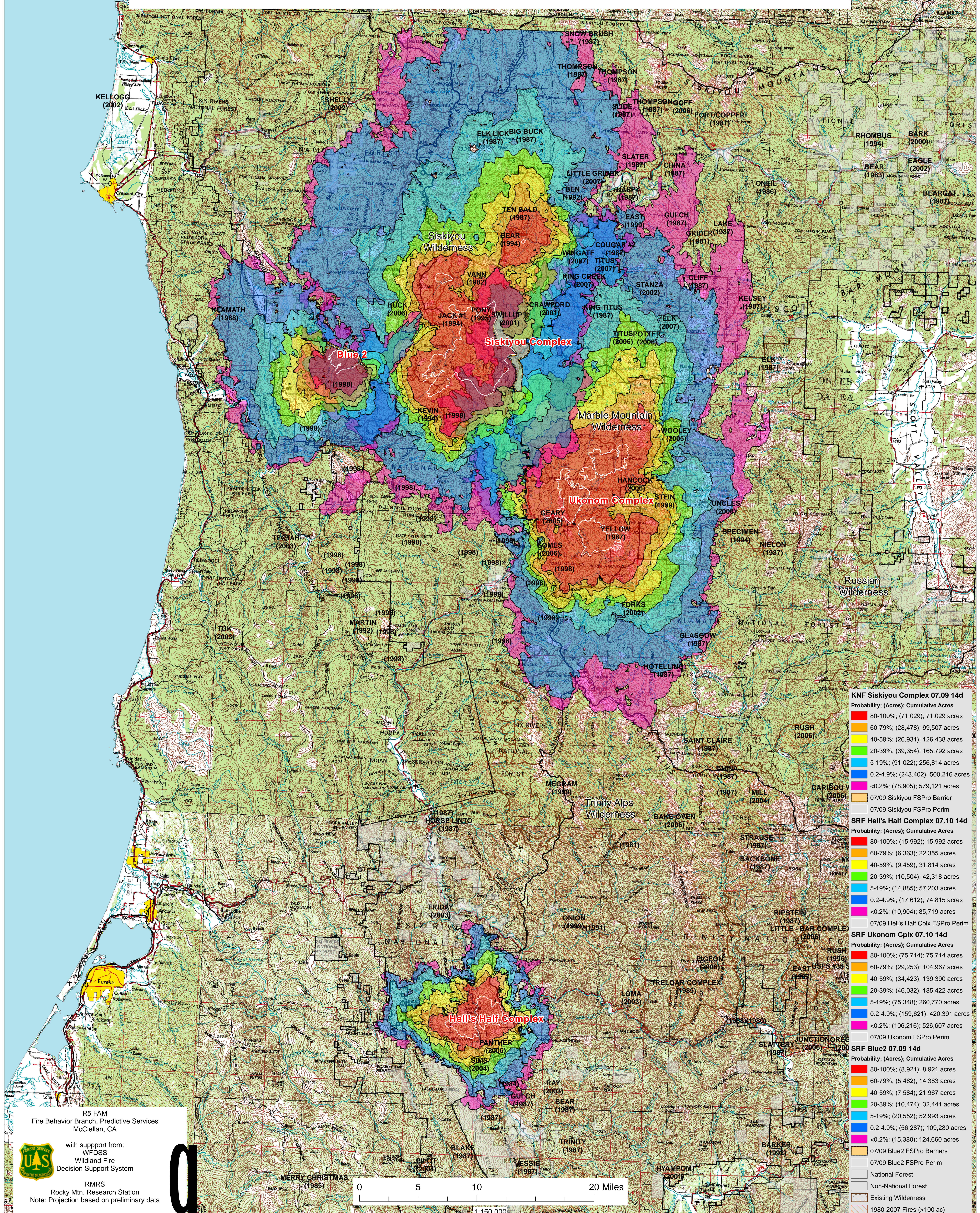


WFDSS - FSPRO PROBABILITY: SRF (Blue2, Ukonom Cplx, Hell's Half Cplx) and KNF Siskiyou Cplx (2008) 90m Res, 1000 Fire Sims

KNF Siskiyou Complex: (07/09 - 14d) ERC: Somes Bar; WINDS: Ship Mtn LO; File: 7.9.2008 Update 14 Day 1000 Fires; Analyst: Larry Hood
 SRF Blue2: (07/9 - 14d) ERC: Camp Six Lookout; WINDS: Ship Mtn L.O.; File: Blue_2_w_barrier_per_7_9; Analyst: Berni Bahro
 SRF Ukonom: (07/10 - 14d) ERC: Somes Bar; WINDS: Somes Bar File: 7.10.2008 Update 14 Day 1000 Fires GACC Analysis Analyst: Larry Hood
 SRF Hell's Half Complex: (07/10 - 14d) ERC: Brush Mtn LO; WINDS: Underwood File: 7.10.2008 Update 14 Day 1000 Fires GACC; Analyst: Larry Hood

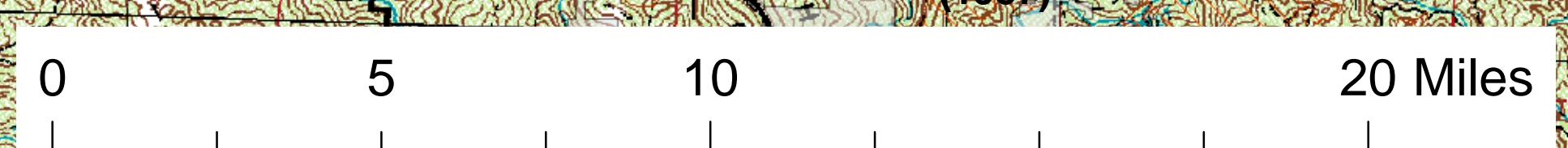


KNF Siskiyou Complex 07.09.14d	
Probability	(Acres); Cumulative Acres
80-100%	(71,029); 71,029 acres
60-79%	(28,478); 99,507 acres
40-59%	(26,931); 126,438 acres
20-39%	(39,354); 165,792 acres
5-19%	(91,022); 256,814 acres
0.2-4.9%	(243,402); 500,216 acres
<0.2%	(78,905); 579,121 acres
07/09 Siskiyou FSPRO Barrier	
07/09 Siskiyou FSPRO Perim	
SRF Hell's Half Complex 07.10.14d	
Probability	(Acres); Cumulative Acres
80-100%	(15,992); 15,992 acres
60-79%	(6,363); 22,355 acres
40-59%	(9,459); 31,814 acres
20-39%	(10,504); 42,318 acres
5-19%	(14,885); 57,203 acres
0.2-4.9%	(17,612); 74,815 acres
<0.2%	(10,904); 85,719 acres
07/09 Hell's Half Cplx FSPRO Perim	
SRF Ukonom Cplx 07.10.14d	
Probability	(Acres); Cumulative Acres
80-100%	(75,714); 75,714 acres
60-79%	(29,253); 104,967 acres
40-59%	(34,423); 139,390 acres
20-39%	(46,032); 185,422 acres
5-19%	(75,348); 260,770 acres
0.2-4.9%	(159,621); 420,391 acres
<0.2%	(106,216); 526,607 acres
07/09 Ukonom FSPRO Perim	
SRF Blue2 07.09.14d	
Probability	(Acres); Cumulative Acres
80-100%	(8,921); 8,921 acres
60-79%	(5,462); 14,383 acres
40-59%	(7,584); 21,967 acres
20-39%	(10,474); 32,441 acres
5-19%	(20,552); 52,993 acres
0.2-4.9%	(56,287); 109,280 acres
<0.2%	(15,380); 124,660 acres
07/09 Blue2 FSPRO Barriers	
07/09 Blue2 FSPRO Perim	
National Forest	
Non-National Forest	
Existing Wilderness	
1980-2007 Fires (>100 ac)	

R5 FAM
 Fire Behavior Branch, Predictive Services
 McClellan, CA

with support from:
 WFDSS
 Wildland Fire
 Decision Support System

RMRS
 Rocky Mtn. Research Station
 Note: Projection based on preliminary data



1:150,000