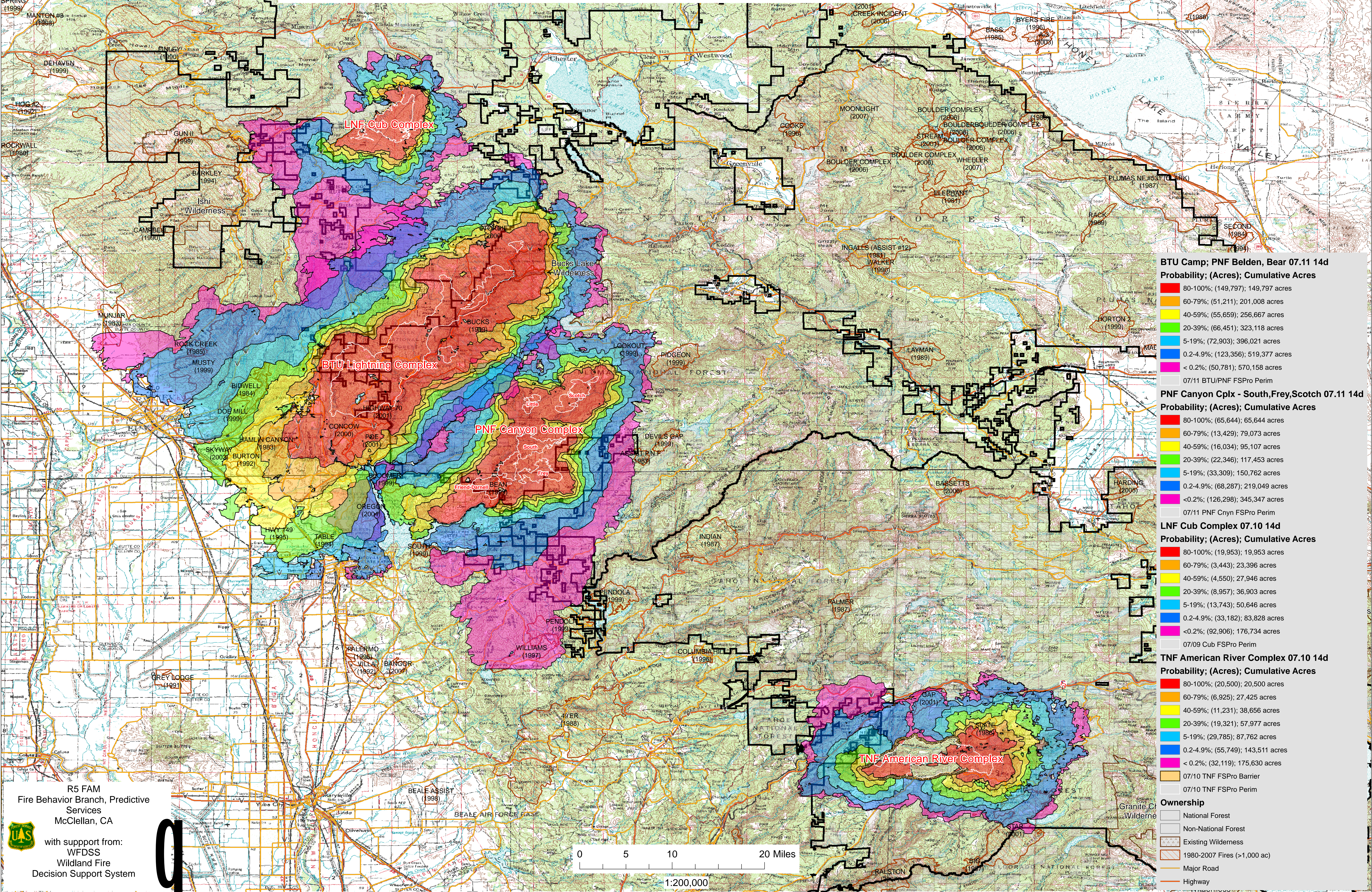


WFDSS - FSPRO PROBABILITY: LNF Cub Cplx; PNF Canyon Cplx; BTU Lightning Cplx; TNF American River Cplx (2008)

LNF Cub Complex: (07/10 - 14d) ERC: Lassen Lodge; WINDS: Lassen Lodge; File: 7.10.2008 Update 14 Day 1000 Fires; Analyst: Larry Hood
 BTU Lightning - Camp Fire; PNF Belden, French/Bear Fires: (07/11 - 14d)
 ERC: Quincy; WINDS: Jarbo Gap; File: 7.11.2008 14day 1000fires Camp,Belden,Bear GACC; Analyst: Larry Hood
 PNF Canyon Cplx - South, Frey, Scotch, Little, Friend-Darnell Fires: (07/11 - 14d)
 ERC: Pike Cnty LO; WINDS: Pike Cnty LO File: 7.11.2008 14d 1000f So. Cyn. Cplx 6 fires GACC Analyst: Larry Hood
 TNF American River Complex: (07/10 - 14d) ERC: Whitecloud; WINDS: Whitecloud File: 7.10.2008 Update 14 Day 1000 Fires GACC; Analyst: Larry Hood



BTU Camp; PNF Belden, Bear 07.11 14d
 Probability; (Acres); Cumulative Acres

- 80-100%; (149,797); 149,797 acres
- 60-79%; (51,211); 201,008 acres
- 40-59%; (55,659); 256,667 acres
- 20-39%; (66,451); 323,118 acres
- 5-19%; (72,903); 396,021 acres
- 0.2-4.9%; (123,356); 519,377 acres
- <0.2%; (50,781); 570,158 acres
- 07/11 BTU/PNF FSPRO Perim

PNF Canyon Cplx - South, Frey, Scotch 07.11 14d
 Probability; (Acres); Cumulative Acres

- 80-100%; (65,644); 65,644 acres
- 60-79%; (13,429); 79,073 acres
- 40-59%; (16,034); 95,107 acres
- 20-39%; (22,346); 117,453 acres
- 5-19%; (33,309); 150,762 acres
- 0.2-4.9%; (68,287); 219,049 acres
- <0.2%; (126,298); 345,347 acres
- 07/11 PNF Cnyn FSPRO Perim

LNF Cub Complex 07.10 14d
 Probability; (Acres); Cumulative Acres

- 80-100%; (19,953); 19,953 acres
- 60-79%; (3,443); 23,396 acres
- 40-59%; (4,550); 27,946 acres
- 20-39%; (8,957); 36,903 acres
- 5-19%; (13,743); 50,646 acres
- 0.2-4.9%; (33,182); 83,828 acres
- <0.2%; (92,906); 176,734 acres
- 07/09 Cub FSPRO Perim

TNF American River Complex 07.10 14d
 Probability; (Acres); Cumulative Acres

- 80-100%; (20,500); 20,500 acres
- 60-79%; (6,925); 27,425 acres
- 40-59%; (11,231); 38,656 acres
- 20-39%; (19,321); 57,977 acres
- 5-19%; (29,785); 87,762 acres
- 0.2-4.9%; (55,749); 143,511 acres
- <0.2%; (32,119); 175,630 acres
- 07/10 TNF FSPRO Barrier
- 07/10 TNF FSPRO Perim

Ownership

- National Forest
- Non-National Forest
- Existing Wilderness
- 1980-2007 Fires (>1,000 ac)
- Major Road
- Highway

R5 FAM
 Fire Behavior Branch, Predictive
 Services
 McClellan, CA

with support from:
 WFDSS
 Wildland Fire
 Decision Support System

