

WFDSS - FSPRO PROBABILITY: SHF Iron & Lime Complex; MNF Yolla Bolly Complex SHU Lightning Complex (2008)

SHF IRON COMPLEX

Cedar, Zeigler, Buckhorn Fires: 90m ERC: Big Bar; WINDS: Big Bar File: 7.11.2008 14d 1000f GACC Cedar,Zeigler,Buckhorn Analyst: Larry Hood
Eagle Fire: 120m ERC: Big Bar; WINDS: Big Bar File: 7.11.2008 14 Day 1000 Fire GACC Analysis Analyst: Larry Hood

SHF LIME COMPLEX

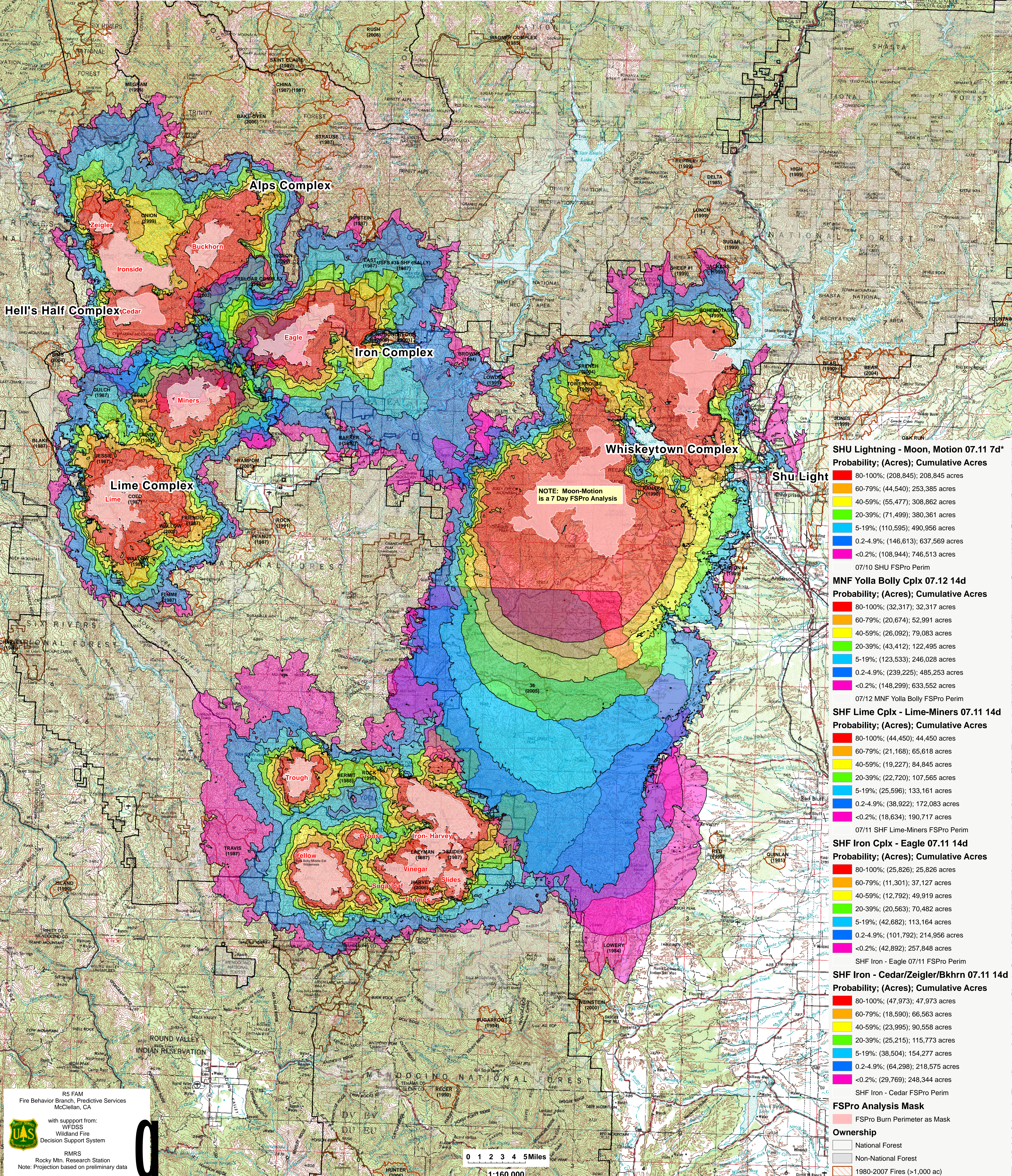
Lime, Miners Fires: 90m ERC: Hayfork; WINDS: Friend Mtn File: 7.11.2008 14d 1000f Lime, Miners GACC Analysis Analyst: Larry Hood

MNF YOLLA BOLLY COMPLEX

Iron, Trough, Yellow, Wilderness Fires: 90m ERC: Yolla Bolla; WINDS: Yolla Bolla
File: 7.12.2008 Iron,Troug,Yell. Wild. 14d 1000f GACC Analyst: Larry Hood

SHU LIGHTNING COMPLEX [NOTE: 7 Day Analysis]

Moon, Motion Fires: 90m ERC: Arbuckle Basin; WINDS: Sugarloaf (SHF) File: 7.11.2008 7 Day 1000 Fires NO Barriers; Analyst: Larry Hood



SHU Lightning - Moon, Motion 07.11 7d*

Probability; (Acres); Cumulative Acres

- 80-100%: (208,845); 208,845 acres
- 60-79%: (44,540); 253,385 acres
- 40-59%: (55,477); 308,862 acres
- 20-39%: (71,499); 380,361 acres
- 5-19%: (110,595); 490,956 acres
- 0.2-4.9%: (146,613); 637,569 acres
- <0.2%: (108,944); 746,513 acres

07/10 SHU FSPRO Perim

MNF Yolla Bolly Cplx 07.12 14d

Probability; (Acres); Cumulative Acres

- 80-100%: (32,317); 32,317 acres
- 60-79%: (20,674); 52,991 acres
- 40-59%: (26,092); 79,083 acres
- 20-39%: (43,412); 122,495 acres
- 5-19%: (123,533); 246,028 acres
- 0.2-4.9%: (239,225); 485,253 acres
- <0.2%: (148,299); 633,552 acres

07/12 MNF Yolla Bolly FSPRO Perim

SHF Lime Cplx - Lime-Miners 07.11 14d

Probability; (Acres); Cumulative Acres

- 80-100%: (44,450); 44,450 acres
- 60-79%: (21,168); 65,618 acres
- 40-59%: (19,227); 84,845 acres
- 20-39%: (22,720); 107,565 acres
- 5-19%: (25,596); 133,161 acres
- 0.2-4.9%: (38,922); 172,083 acres
- <0.2%: (18,634); 190,717 acres

07/11 SHF Lime-Miners FSPRO Perim

SHF Iron Cplx - Eagle 07.11 14d

Probability; (Acres); Cumulative Acres

- 80-100%: (25,826); 25,826 acres
- 60-79%: (11,301); 37,127 acres
- 40-59%: (12,792); 49,919 acres
- 20-39%: (20,563); 70,482 acres
- 5-19%: (42,682); 113,164 acres
- 0.2-4.9%: (101,792); 214,956 acres
- <0.2%: (42,892); 257,848 acres

SHF Iron - Eagle 07/11 FSPRO Perim

SHF Iron - Cedar/Zeigler/Bkhrn 07.11 14d

Probability; (Acres); Cumulative Acres

- 80-100%: (47,973); 47,973 acres
- 60-79%: (18,590); 66,563 acres
- 40-59%: (23,995); 90,558 acres
- 20-39%: (25,215); 115,773 acres
- 5-19%: (38,504); 154,277 acres
- 0.2-4.9%: (64,298); 218,575 acres
- <0.2%: (29,769); 248,344 acres

SHF Iron - Cedar FSPRO Perim

FSPRO Analysis Mask

FSPRO Burn Perimeter as Mask

National Forest

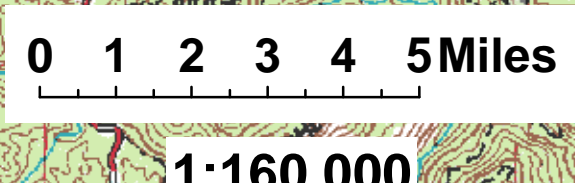
Non-National Forest

1980-2007 Fires (>1,000 ac)

R5 FAM
Fire Behavior Branch, Predictive Services
McClellan, CA

with support from:
WFDSS
Wildland Fire
Decision Support System

RMRS
Rocky Mtn. Research Station
Note: Projection based on preliminary data



1:160,000