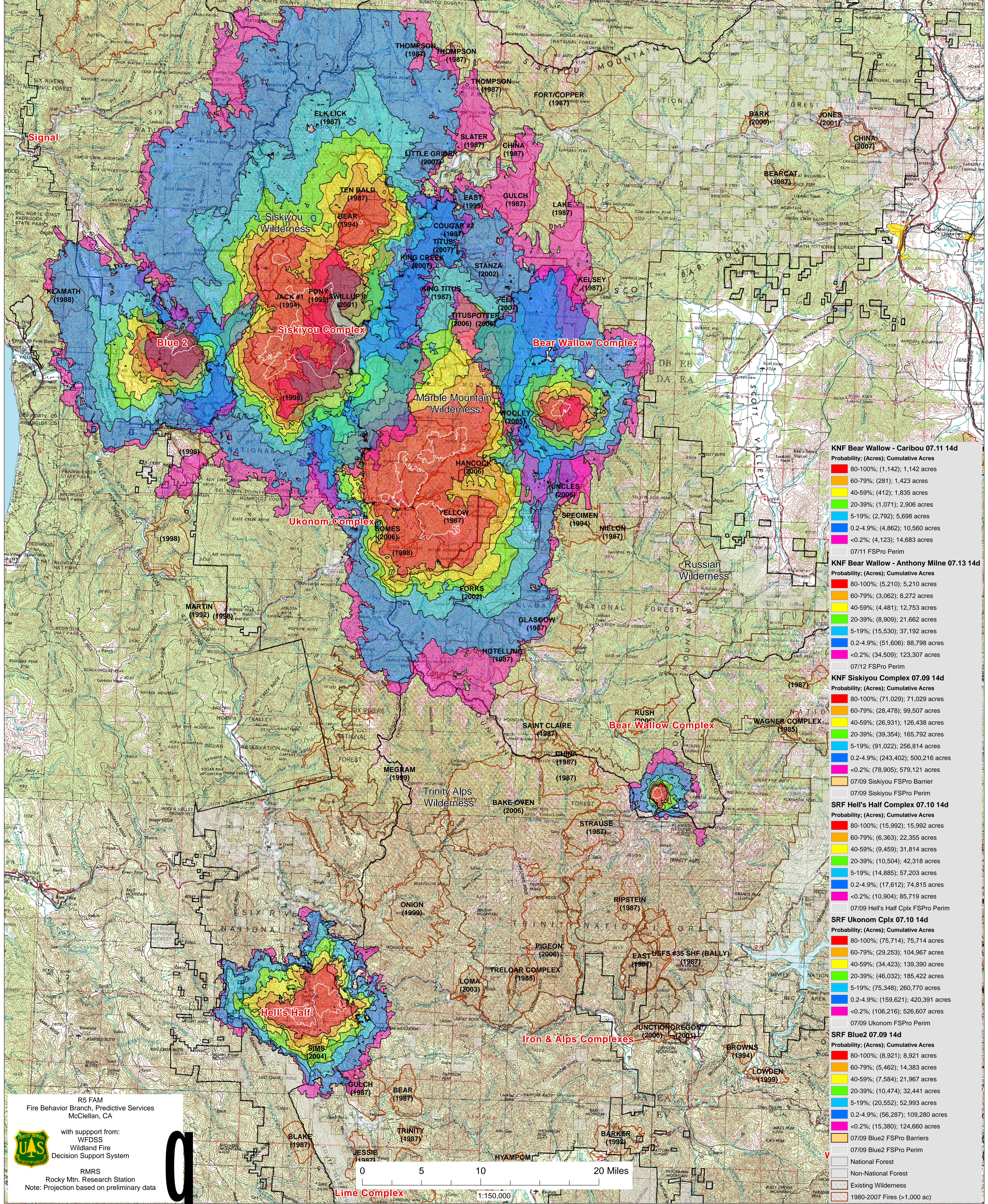


# WFDSS - FSPRO PROBABILITY: SRF (Blue2, Ukonom Complex, Hell's Half Complex); KNF Siskiyou Complex, Bear Wallow Complex (2008)

KNF Siskiyou Complex: (07/09 - 14d / 90m-1000 Fires) ERC: Some Bar; WINDS: Ship Mtn LO; File: 7.9.2008 Update 14 Day 1000 Fires; Analyst: Larry Hood  
 KNF Bear Wallow - Caribou: (7/11 - 14d / 60m-500 fires) ERC: Sawyers Bar; WINDS: Blue Ridge (KNF) File: Caribou\_7\_11\_ModisAM; Analyst: Berni Bahro  
 KNF Bear Wallow - Anthony Milne: (7/13 - 14d / 90m-900 fires) ERC: Collins Baldy LO; WINDS: Blue Ridge (KNF) File: 14\_day\_w\_forecast\_wx\_incr\_lfm; Analyst: Clint Isbell  
 SRF Blue2: (07/9 - 14d / 90m-1000 fires) ERC: Camp Six Lookout; WINDS: Ship Mtn L.O.; File: Blue\_2\_w\_barrier\_per\_7\_9; Analyst: Berni Bahro  
 SRF Ukonom: (07/10 - 14d / 90m-1000 fires) ERC: Some Bar; WINDS: Some Bar File: 7.10.2008 Update 14 Day 1000 Fires GACC Analysis Analyst: Larry Hood  
 SRF Hell's Half Complex: (07/10 - 14d / 90m-1000 fires) ERC: Brush Mtn LO; WINDS: Underwood File: 7.10.2008 Update 14 Day 1000 Fires GACC; Analyst: Larry Hood



Complex Name	Probability	Acres	Cumulative Acres
KNF Bear Wallow - Caribou 07.11 14d	80-100%	(1,142)	1,142 acres
	60-79%	(281)	1,423 acres
	40-59%	(412)	1,835 acres
	20-39%	(1,071)	2,906 acres
	5-19%	(2,792)	5,698 acres
	0.2-4.9%	(4,862)	10,560 acres
	<0.2%	(4,123)	14,683 acres
07/11 FSPRO Perim			
KNF Bear Wallow - Anthony Milne 07.13 14d	80-100%	(5,210)	5,210 acres
	60-79%	(3,062)	8,272 acres
	40-59%	(4,481)	12,753 acres
	20-39%	(8,909)	21,662 acres
	5-19%	(15,530)	37,192 acres
	0.2-4.9%	(51,606)	88,798 acres
	<0.2%	(34,509)	123,307 acres
07/12 FSPRO Perim			
KNF Siskiyou Complex 07.09 14d	80-100%	(71,029)	71,029 acres
	60-79%	(28,478)	99,507 acres
	40-59%	(26,931)	126,438 acres
	20-39%	(39,354)	165,792 acres
	5-19%	(91,022)	256,814 acres
	0.2-4.9%	(243,402)	500,216 acres
	<0.2%	(78,905)	579,121 acres
07/09 Siskiyou FSPRO Barrier			
07/09 Siskiyou FSPRO Perim			
SRF Hell's Half Complex 07.10 14d	80-100%	(15,992)	15,992 acres
	60-79%	(6,363)	22,355 acres
	40-59%	(9,459)	31,814 acres
	20-39%	(10,504)	42,318 acres
	5-19%	(14,885)	57,203 acres
	0.2-4.9%	(17,612)	74,815 acres
	<0.2%	(10,904)	85,719 acres
07/09 Hell's Half Cplx FSPRO Perim			
SRF Ukonom Cplx 07.10 14d	80-100%	(75,714)	75,714 acres
	60-79%	(29,253)	104,967 acres
	40-59%	(34,423)	139,390 acres
	20-39%	(46,032)	185,422 acres
	5-19%	(75,348)	260,770 acres
	0.2-4.9%	(159,621)	420,391 acres
	<0.2%	(106,216)	526,607 acres
07/09 Ukonom FSPRO Perim			
SRF Blue2 07.09 14d	80-100%	(8,921)	8,921 acres
	60-79%	(5,462)	14,383 acres
	40-59%	(7,584)	21,967 acres
	20-39%	(10,474)	32,441 acres
	5-19%	(20,552)	52,993 acres
	0.2-4.9%	(56,287)	109,280 acres
	<0.2%	(15,380)	124,660 acres
07/09 Blue2 FSPRO Barriers			
07/09 Blue2 FSPRO Perim			
National Forest			
Non-National Forest			
Existing Wilderness			
1980-2007 Fires (>1,000 ac)			

R5 FAM  
 Fire Behavior Branch, Predictive Services  
 McClellan, CA

with support from:  
 WFDSS  
 Wildland Fire  
 Decision Support System

RMRS  
 Rocky Mtn. Research Station  
 Note: Projection based on preliminary data

