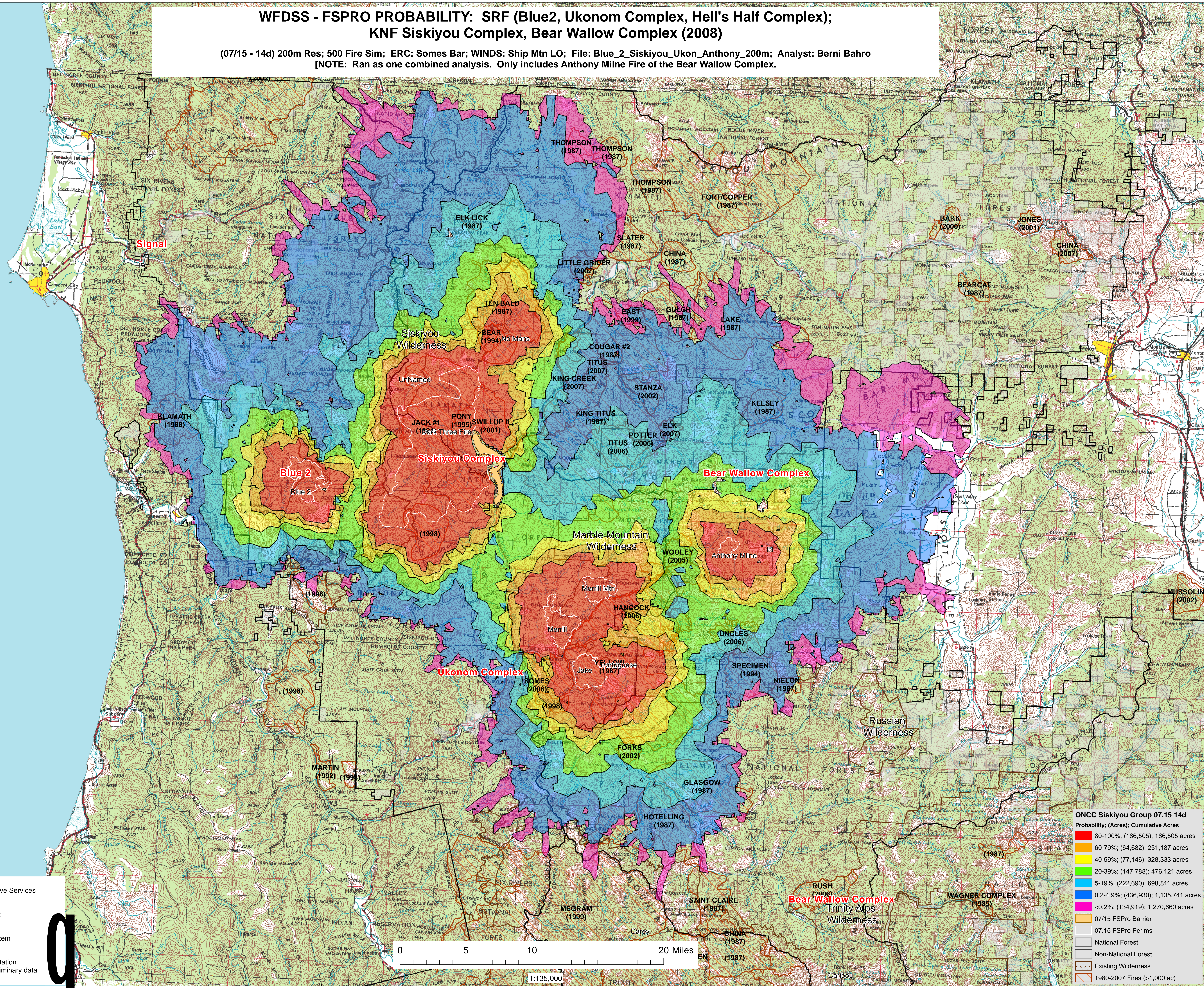


WFDSS - FSPRO PROBABILITY: SRF (Blue2, Ukonom Complex, Hell's Half Complex); KNF Siskiyou Complex, Bear Wallow Complex (2008)

(07/15 - 14d) 200m Res; 500 Fire Sim; ERC: Somes Bar; WINDS: Ship Mtn LO; File: Blue_2_Siskiyou_Ukon_Anthony_200m; Analyst: Berni Bahro
[NOTE: Ran as one combined analysis. Only includes Anthony Milne Fire of the Bear Wallow Complex.]



ONCC Siskiyou Group 07.15 14d
Probability; (Acres); Cumulative Acres

80-100%	(186,505); 186,505 acres
60-79%	(64,682); 251,187 acres
40-59%	(77,146); 328,333 acres
20-39%	(147,788); 476,121 acres
5-19%	(222,690); 698,811 acres
0.2-4.9%	(436,930); 1,135,741 acres
<0.2%	(134,919); 1,270,660 acres

- 07/15 FSPro Barrier
- 07.15 FSPro Perims
- National Forest
- Non-National Forest
- Existing Wilderness
- 1980-2007 Fires (>1,000 ac)

R5 FAM
Fire Behavior Branch, Predictive Services
McClellan, CA

with support from:
WFDSS
Wildland Fire
Decision Support System

RMRS
Rocky Mtn. Research Station
Note: Projection based on preliminary data

