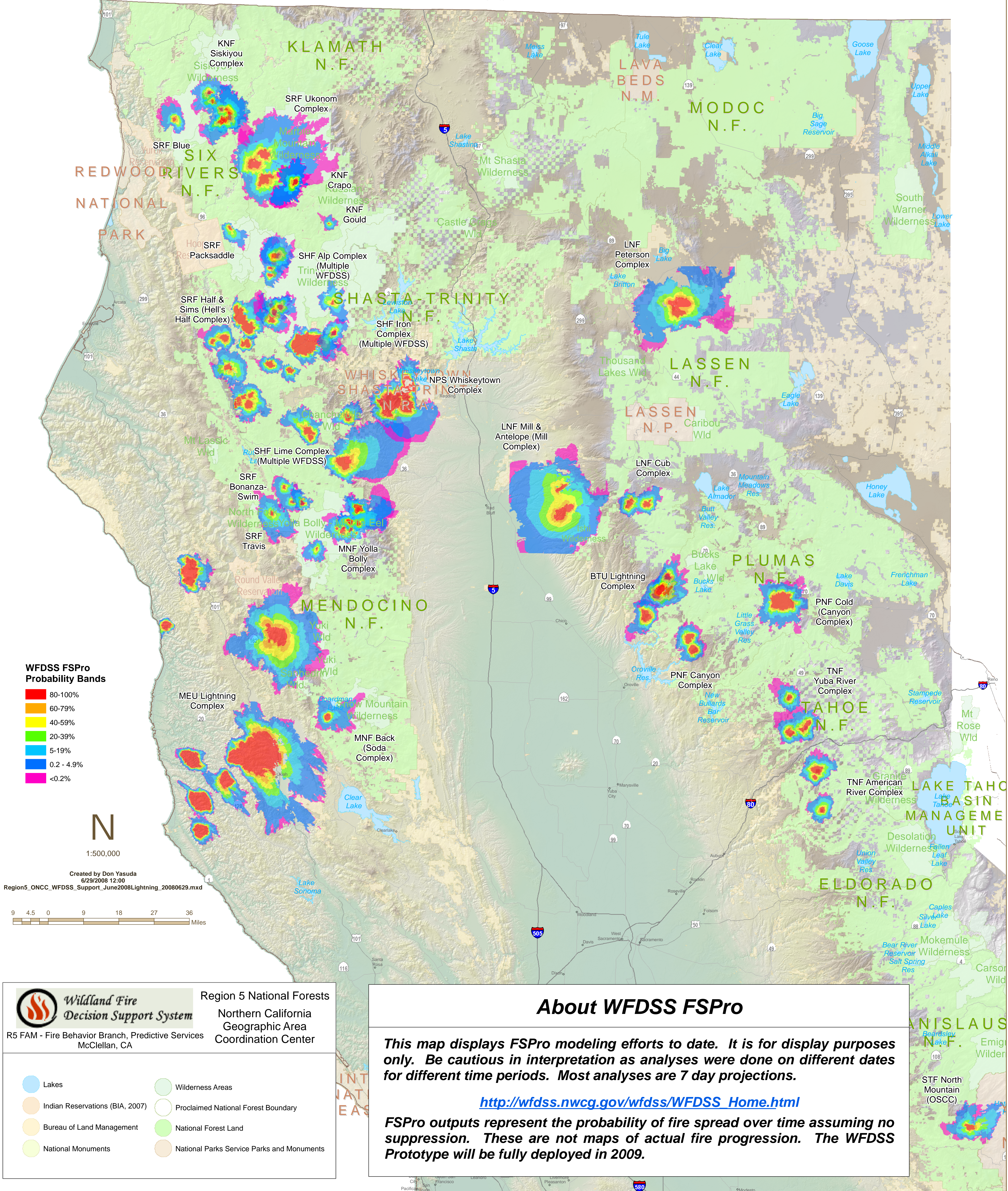


Wildland Fire Decision Support System (WFDSS) June 2008 Northern California Lightning Event Northern California Geographic Area Coordination Center Fire Spread Probability (FSPro) Analysis as of 06/29/2008 @1200



WFDSS FSPro Probability Bands

- 80-100%
- 60-79%
- 40-59%
- 20-39%
- 5-19%
- 0.2 - 4.9%
- <0.2%

N
1:500,000

Created by Don Yasuda
6/29/2008 12:00
Region5_ONCC_WFDSS_Support_June2008Lightning_20080629.mxd

9 4.5 0 9 18 27 36
Miles



Wildland Fire Decision Support System
R5 FAM - Fire Behavior Branch, Predictive Services
McClellan, CA

Region 5 National Forests
Northern California
Geographic Area
Coordination Center

<ul style="list-style-type: none"> ● Lakes ● Indian Reservations (BIA, 2007) ● Bureau of Land Management ● National Monuments 	<ul style="list-style-type: none"> ● Wilderness Areas ○ Proclaimed National Forest Boundary ● National Forest Land ● National Parks Service Parks and Monuments
---	---

About WFDSS FSPro

This map displays FSPro modeling efforts to date. It is for display purposes only. Be cautious in interpretation as analyses were done on different dates for different time periods. Most analyses are 7 day projections.

http://wfdss.nwccg.gov/wfdss/WFDSS_Home.html

FSPro outputs represent the probability of fire spread over time assuming no suppression. These are not maps of actual fire progression. The WFDSS Prototype will be fully deployed in 2009.

ANISLAUS N.F.
STF North Mountain (OSCC)