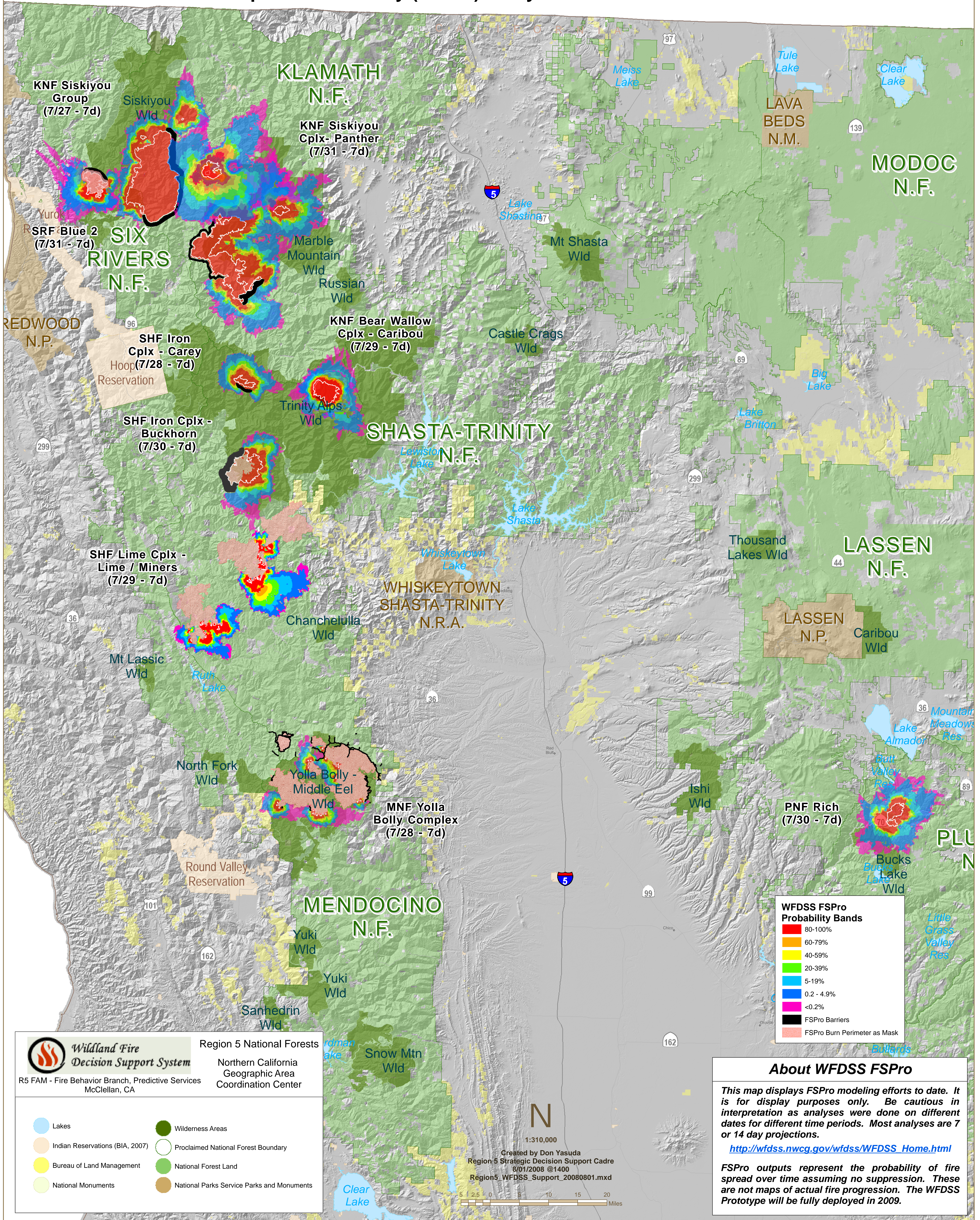


Wildland Fire Decision Support System (WFDSS) August 2008 - Fires Currently Supported - ONCC

Fire Spread Probability (FSPro) Analysis as of 07/31/2008 @2200



WFDSS FSPro Probability Bands

- 80-100%
- 60-79%
- 40-59%
- 20-39%
- 5-19%
- 0.2 - 4.9%
- <0.2%
- FSPro Barriers
- FSPro Burn Perimeter as Mask

Wildland Fire Decision Support System
Region 5 National Forests
Northern California Geographic Area Coordination Center
R5 FAM - Fire Behavior Branch, Predictive Services
McClellan, CA

- Lakes
- Indian Reservations (BIA, 2007)
- Bureau of Land Management
- National Monuments
- Wilderness Areas
- Proclaimed National Forest Boundary
- National Forest Land
- National Parks Service Parks and Monuments

About WFDSS FSPro

This map displays FSPro modeling efforts to date. It is for display purposes only. Be cautious in interpretation as analyses were done on different dates for different time periods. Most analyses are 7 or 14 day projections.

http://wfdss.nwcg.gov/wfdss/WFDSS_Home.html

FSPro outputs represent the probability of fire spread over time assuming no suppression. These are not maps of actual fire progression. The WFDSS Prototype will be fully deployed in 2009.

Created by Don Yasuda
Region 5 Strategic Decision Support Cadre
8/01/2008 @1400
Region5_WFDSS_Support_20080801.mxd

Scale: 1:310,000
0 2.5 5 10 15 20 Miles