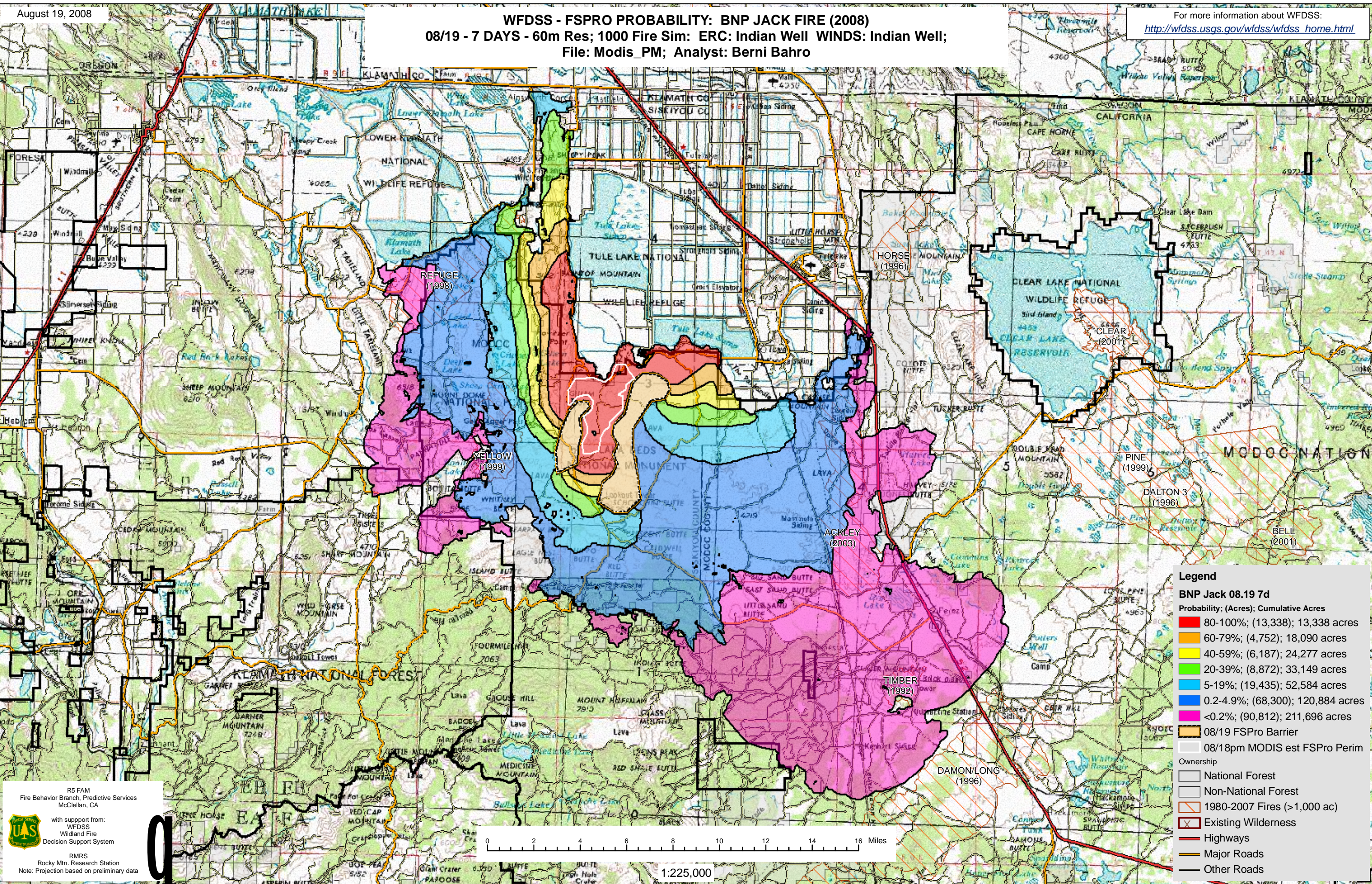


WFDSS - FSPRO PROBABILITY: BNP JACK FIRE (2008)

08/19 - 7 DAYS - 60m Res; 1000 Fire Sim: ERC: Indian Well WINDS: Indian Well;
File: Modis_PM; Analyst: Berni Bahro

For more information about WFDSS:
http://wfdss.usgs.gov/wfdss/wfdss_home.html



Legend

BNP Jack 08.19 7d
Probability; (Acres); Cumulative Acres

- 80-100%; (13,338); 13,338 acres
- 60-79%; (4,752); 18,090 acres
- 40-59%; (6,187); 24,277 acres
- 20-39%; (8,872); 33,149 acres
- 5-19%; (19,435); 52,584 acres
- 0.2-4.9%; (68,300); 120,884 acres
- <0.2%; (90,812); 211,696 acres

08/19 FSPRO Barrier

08/18pm MODIS est FSPRO Perim

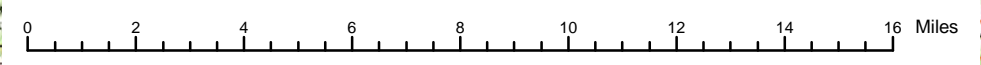
Ownership

- National Forest
- Non-National Forest
- 1980-2007 Fires (>1,000 ac)
- Existing Wilderness
- Highways
- Major Roads
- Other Roads

RS FAM
Fire Behavior Branch, Predictive Services
McClellan, CA

with support from:
WFDSS
Wildland Fire
Decision Support System

RMRS
Rocky Mtn. Research Station
Note: Projection based on preliminary data



1:225,000