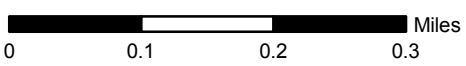



123°10'0"W

123°9'30"W

123°9'0"W

Slinkard Fire
Infrared Heat Sources 08/31/2008 2330 MDT
 IR Interpreter: S. Moss Interpreted Acres: 379

41°50'0"N

41°50'0"N

41°49'30"N

41°49'30"N

41°49'0"N

41°49'0"N

41°48'30"N

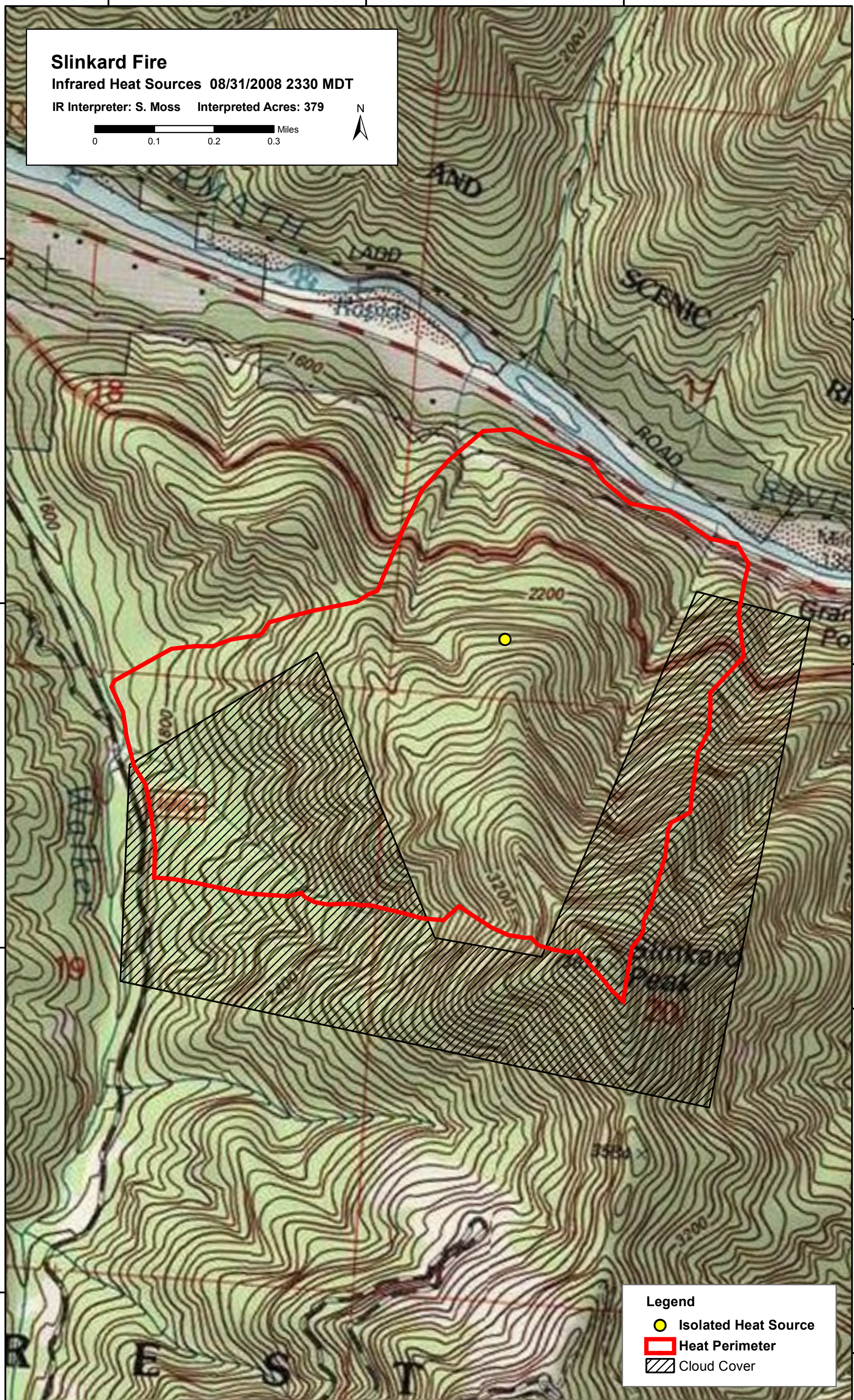
41°48'30"N

123°10'0"W



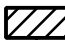
123°9'30"W

123°9'0"W

123°8'30"W



Legend

-  Isolated Heat Source
-  Heat Perimeter
-  Cloud Cover