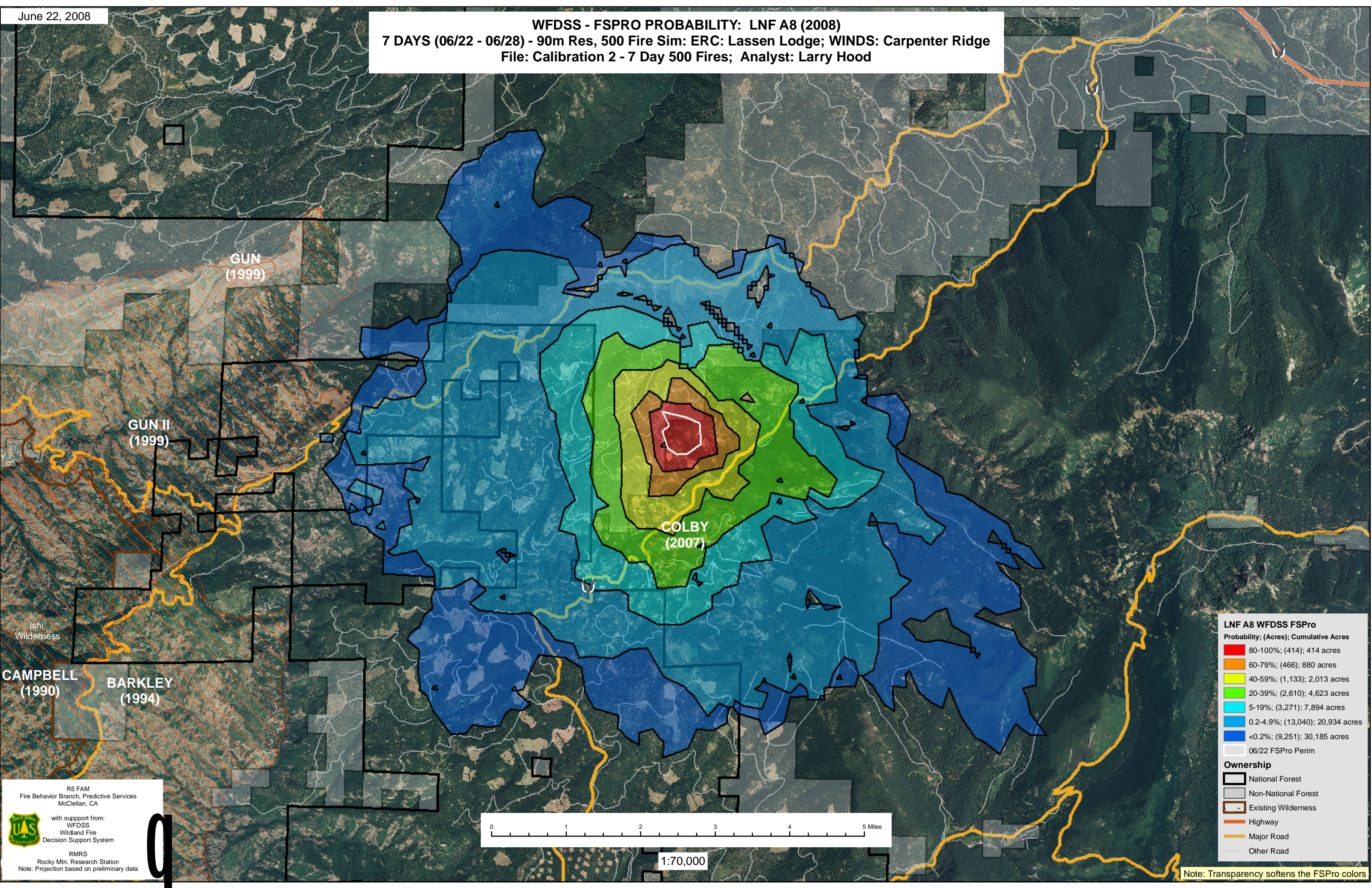


WFDSS - FSPRO PROBABILITY: LNF A8 (2008)
7 DAYS (06/22 - 06/28) - 90m Res, 500 Fire Sim: ERC: Lassen Lodge; WINDS: Carpenter Ridge
File: Calibration 2 - 7 Day 500 Fires; Analyst: Larry Hood



CAMPBELL (1990) BARKLEY (1994)

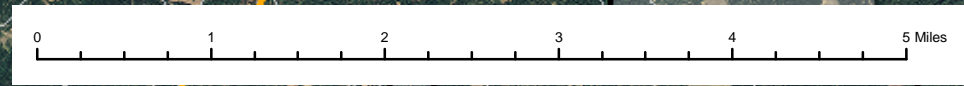
GUN (1999)

GUN II (1999)

COLBY (2007)

Ishi Wilderness

R5 FAM
Fire Behavior Branch, Predictive Services
McClellan, CA
with support from:
WFDSS
Wildland Fire
Decision Support System
RMRS
Rocky Mtn. Research Station
Note: Projection based on preliminary data



1:70,000

LNF A8 WFDSS FSPro

Probability; (Acres); Cumulative Acres
80-100%; (414); 414 acres
60-79%; (466); 880 acres
40-59%; (1,133); 2,013 acres
20-39%; (2,610); 4,623 acres
5-19%; (3,271); 7,894 acres
0.2-4.9%; (13,040); 20,934 acres
<0.2%; (9,251); 30,185 acres
06/22 FSPro Perim

Ownership

- National Forest
- Non-National Forest
- Existing Wilderness
- Highway
- Major Road
- Other Road

Note: Transparency softens the FSPro colors