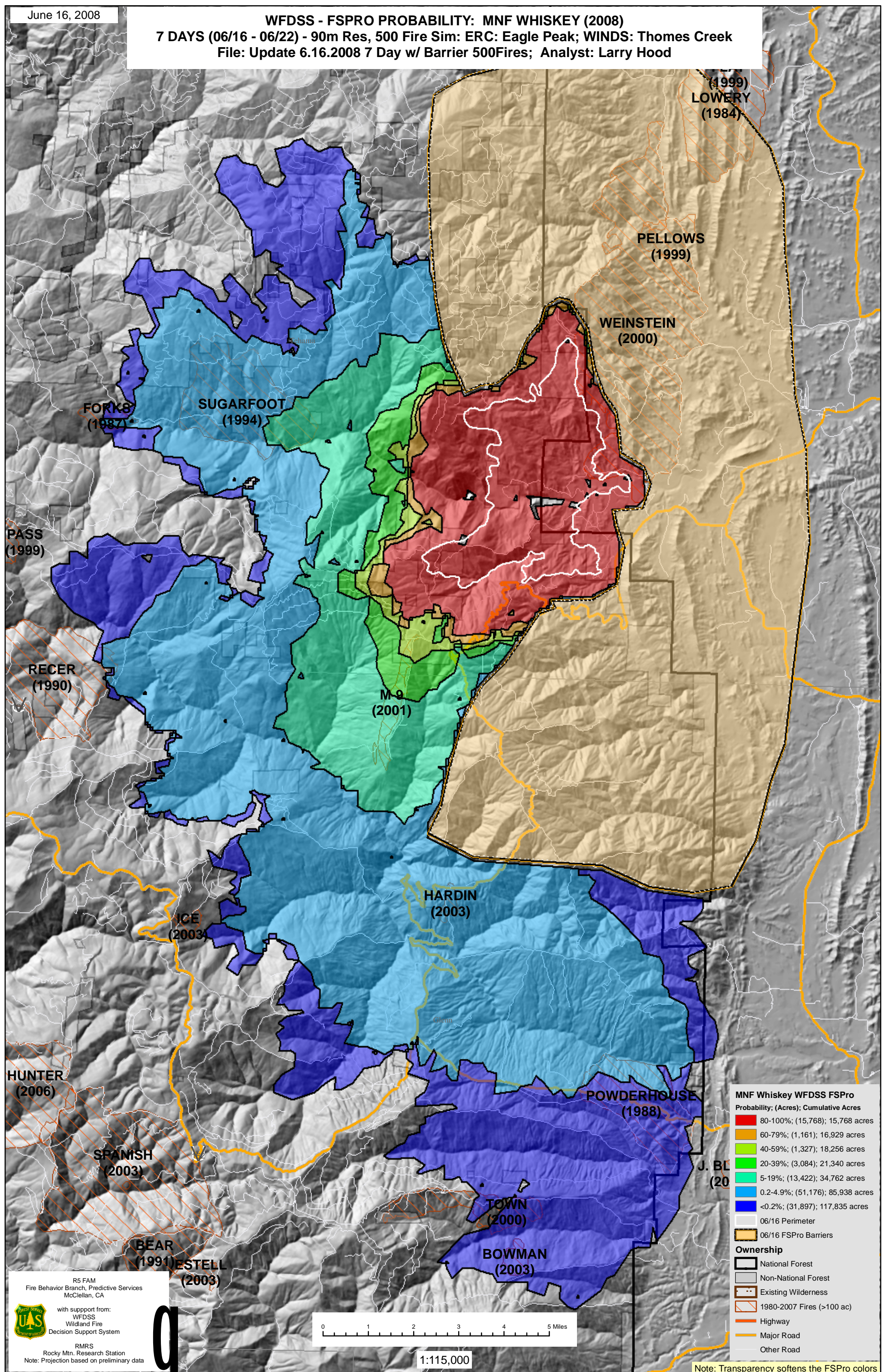


June 16, 2008

WFDSS - FSPRO PROBABILITY: MNF WHISKEY (2008)
7 DAYS (06/16 - 06/22) - 90m Res, 500 Fire Sim: ERC: Eagle Peak; WINDS: Thomes Creek
File: Update 6.16.2008 7 Day w/ Barrier 500Fires; Analyst: Larry Hood



MNF Whiskey WFDSS FSPRO
Probability; (Acres); Cumulative Acres

- 80-100%; (15,768); 15,768 acres
- 60-79%; (1,161); 16,929 acres
- 40-59%; (1,327); 18,256 acres
- 20-39%; (3,084); 21,340 acres
- 5-19%; (13,422); 34,762 acres
- 0.2-4.9%; (51,176); 85,938 acres
- <0.2%; (31,897); 117,835 acres

06/16 Perimeter
06/16 FSPRO Barriers

Ownership

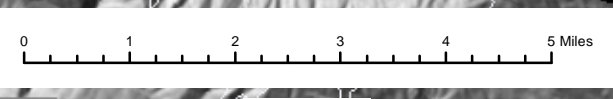
- National Forest
- Non-National Forest
- Existing Wilderness
- 1980-2007 Fires (>100 ac)
- Highway
- Major Road
- Other Road

Note: Transparency softens the FSPRO colors

R5 FAM
Fire Behavior Branch, Predictive Services
McClellan, CA

with support from:
WFDSS
Wildland Fire
Decision Support System

RMRS
Rocky Mtn. Research Station
Note: Projection based on preliminary data



1:115,000