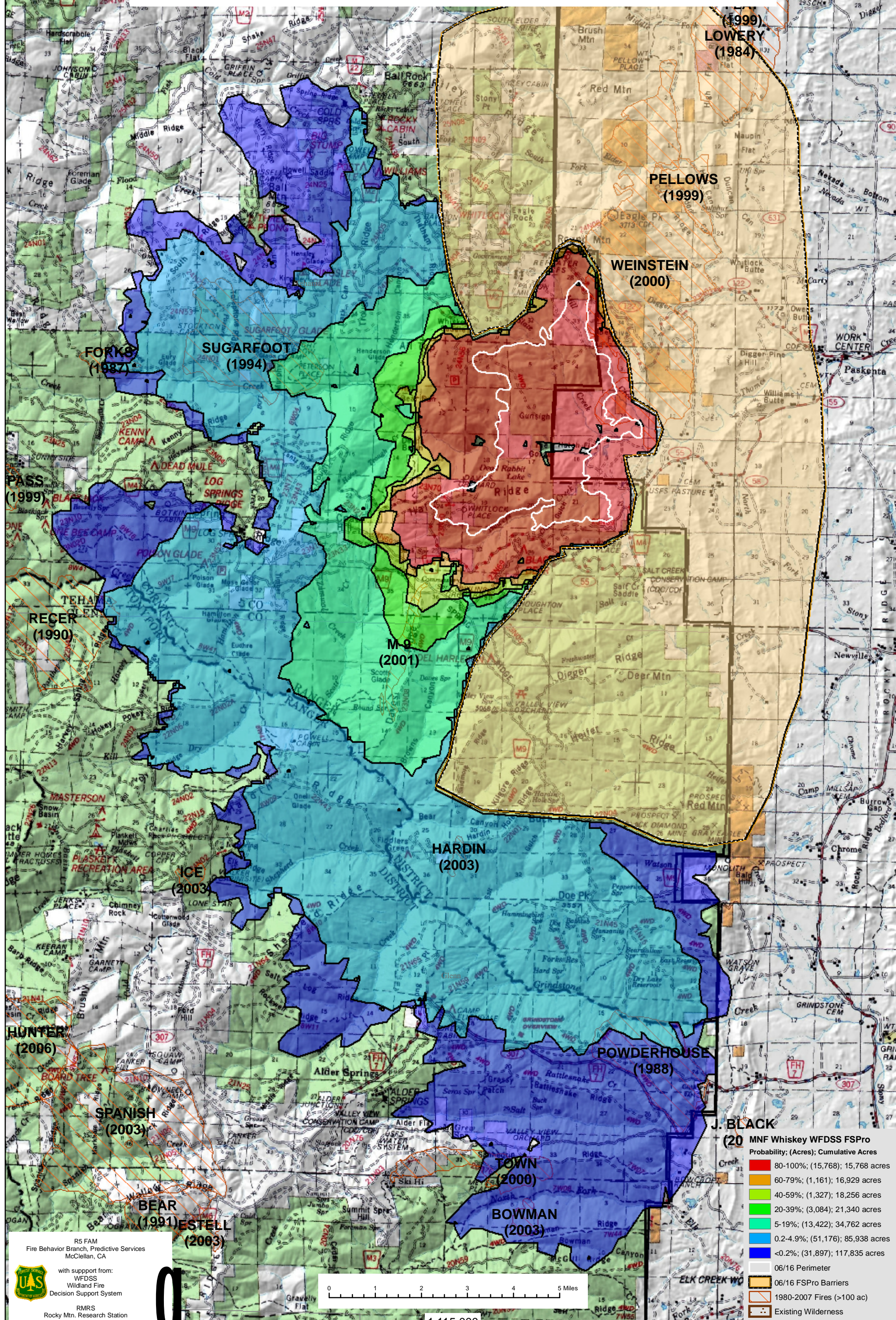
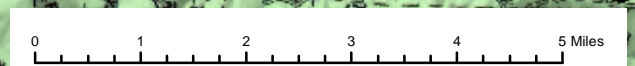


June 16, 2008

WFDSS - FSPRO PROBABILITY: MNF WHISKEY (2008)
7 DAYS (06/16 - 06/22) - 90m Res, 500 Fire Sim: ERC: Eagle Peak; WINDS: Thomes Creek
File: Update 6.16.2008 7 Day w/ Barrier 500Fires; Analyst: Larry Hood



R5 FAM
Fire Behavior Branch, Predictive Services
McClellan, CA
with support from:
WFDSS
Wildland Fire
Decision Support System
RMRS
Rocky Mtn. Research Station
Note: Projection based on preliminary data



1:115,000

(20) MNF Whiskey WFDSS FSPro

Probability	(Acres)	Cumulative Acres
80-100%	(15,768)	15,768 acres
60-79%	(1,161)	16,929 acres
40-59%	(1,327)	18,256 acres
20-39%	(3,084)	21,340 acres
5-19%	(13,422)	34,762 acres
0.2-4.9%	(51,176)	85,938 acres
<0.2%	(31,897)	117,835 acres

- 06/16 Perimeter
- 06/16 FSPro Barriers
- 1980-2007 Fires (>100 ac)
- Existing Wilderness

Note: Transparency softens the FSPro colors