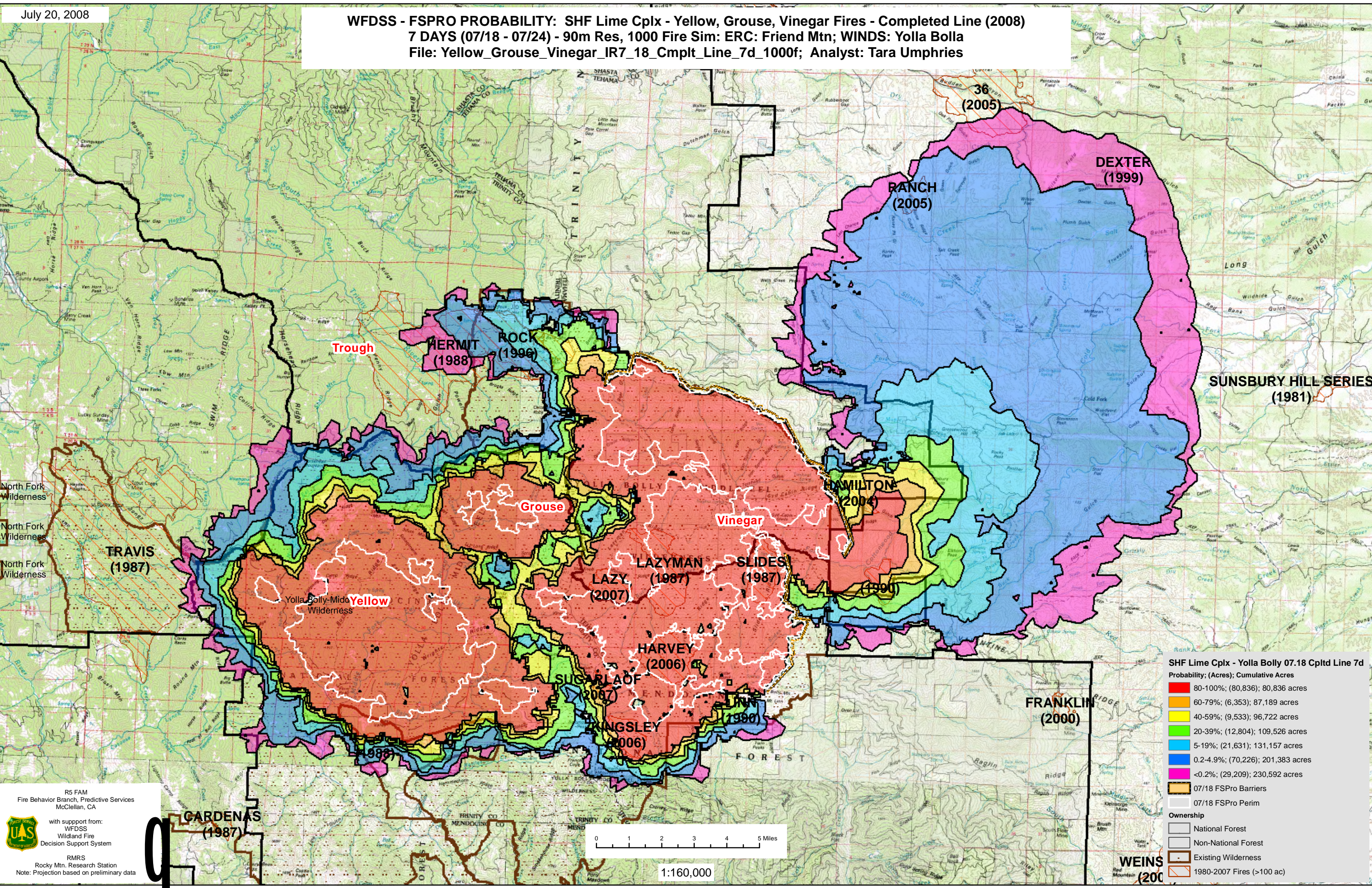


WFDSS - FSPRO PROBABILITY: SHF Lime Cplx - Yellow, Grouse, Vinegar Fires - Completed Line (2008)
7 DAYS (07/18 - 07/24) - 90m Res, 1000 Fire Sim: ERC: Friend Mtn; WINDS: Yolla Bolla
File: Yellow_Grouse_Vinegar_IR7_18_Cmplt_Line_7d_1000f; Analyst: Tara Umphries



SHF Lime Cplx - Yolla Bolly 07.18 Cpltd Line 7d
Probability; (Acres); Cumulative Acres

80-100%; (80,836); 80,836 acres
60-79%; (6,353); 87,189 acres
40-59%; (9,533); 96,722 acres
20-39%; (12,804); 109,526 acres
5-19%; (21,631); 131,157 acres
0.2-4.9%; (70,226); 201,383 acres
<0.2%; (29,209); 230,592 acres

07/18 FSPro Barriers
07/18 FSPro Perim

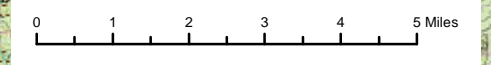
Ownership

- National Forest
- Non-National Forest
- Existing Wilderness
- 1980-2007 Fires (>100 ac)

R5 FAM
Fire Behavior Branch, Predictive Services
McClellan, CA

with support from:
WFDSS
Wildland Fire
Decision Support System

RMRS
Rocky Mtn. Research Station
Note: Projection based on preliminary data



1:160,000