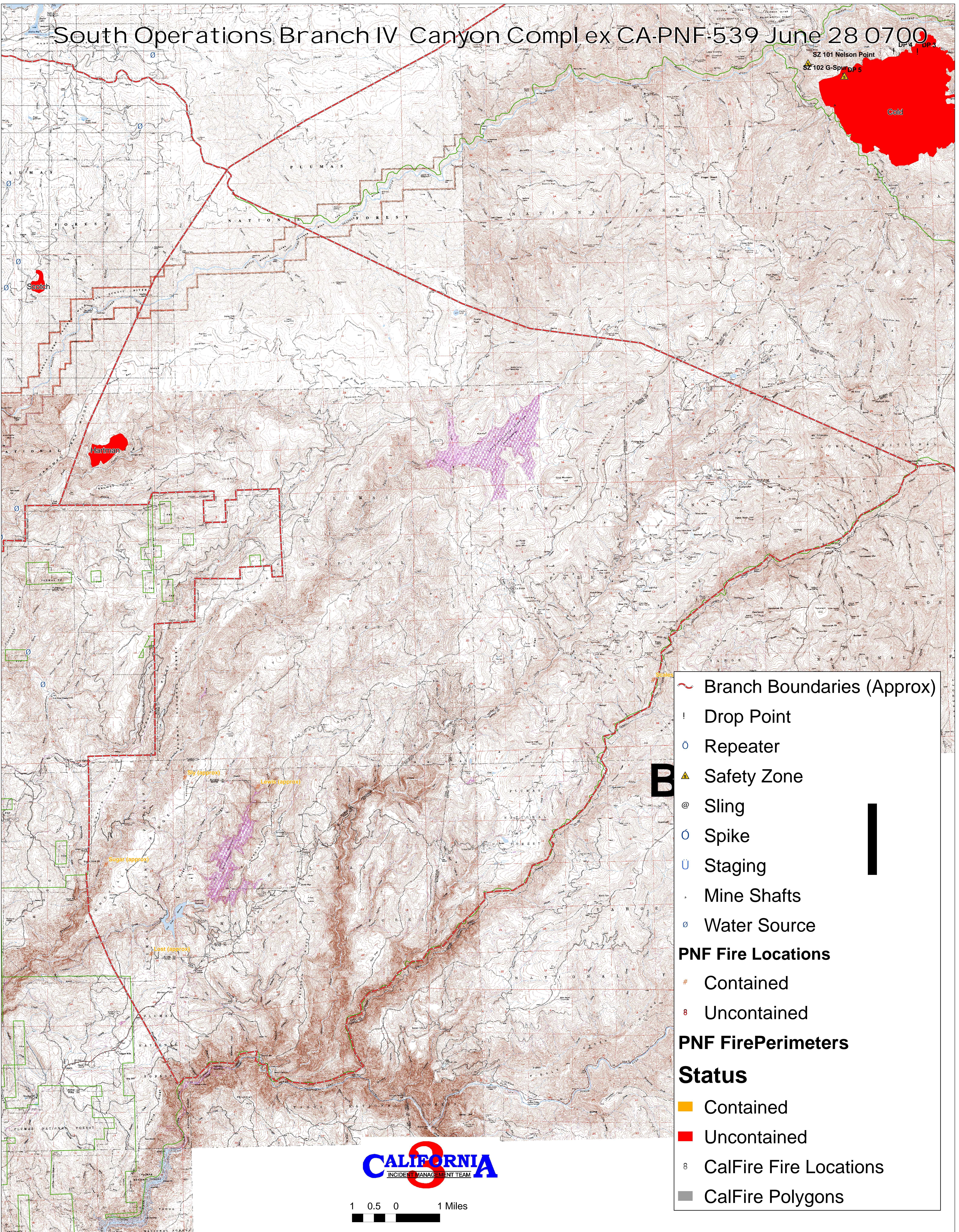


South Operations Branch IV Canyon Complex CA-PNF-539 June 28 0700



SZ 101 Nelson Point
SZ 102 G-Spur DP 5

Cold

Scotch

Hartman

Sly (approx)

Lewis (approx)

Sugar (approx)

Lost (approx)

B

- Branch Boundaries (Approx)
- Drop Point
- Repeater
- Safety Zone
- Sling
- Spike
- Staging
- Mine Shafts
- Water Source
- PNF Fire Locations**
- # Contained
- 8 Uncontained
- PNF Fire Perimeters**
- Status**
- Contained
- Uncontained
- 8 CalFire Fire Locations
- CalFire Polygons



1 0.5 0 1 Miles