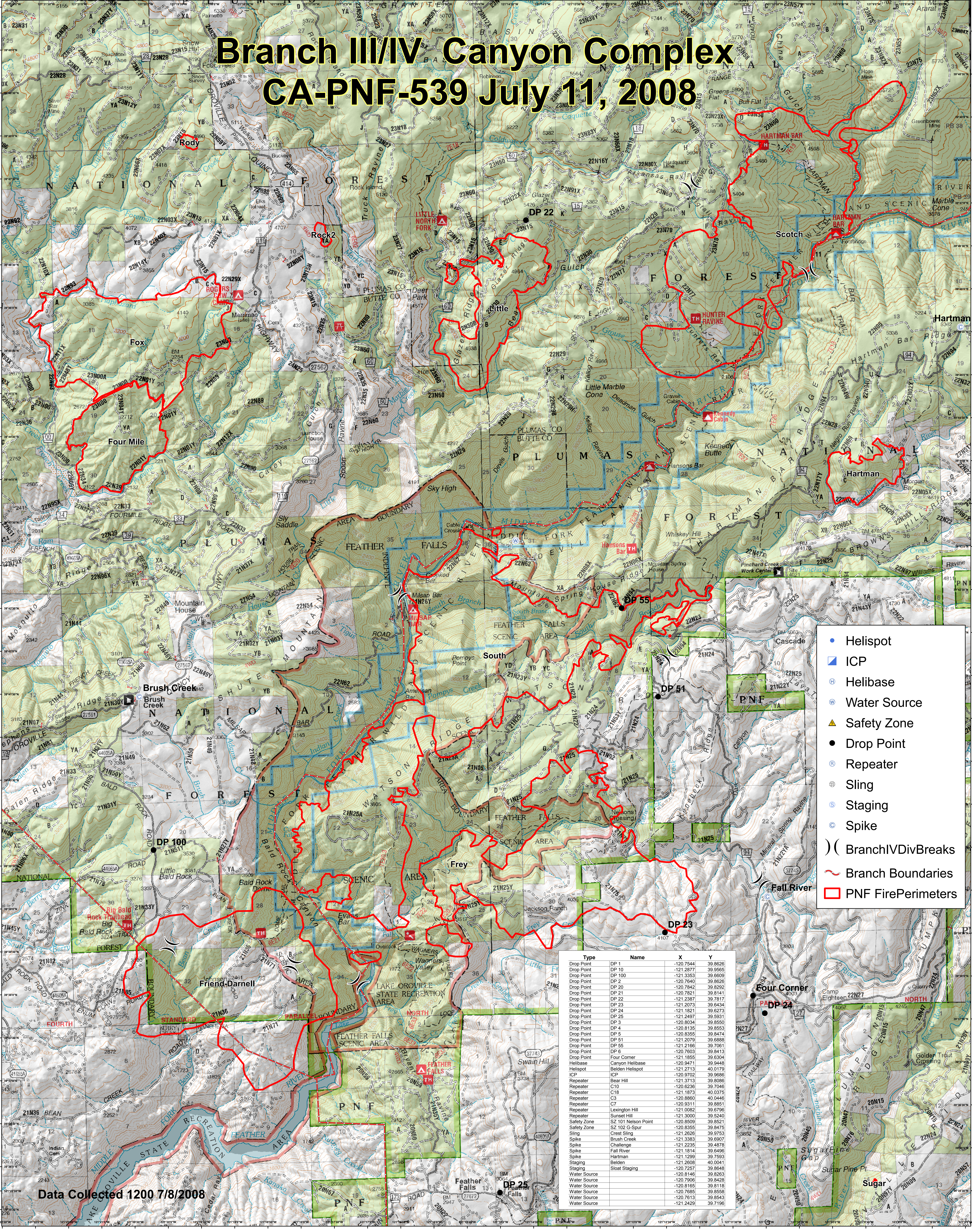


Branch III/IV Canyon Complex

CA-PNF-539 July 11, 2008



- Helispot
- ▣ ICP
- ⊕ Helibase
- ⊙ Water Source
- ▲ Safety Zone
- Drop Point
- ⊕ Repeater
- ⊕ Sling
- ⊕ Staging
- ⊕ Spike
-) (Branch I/IV Div Breaks
- ~ Branch Boundaries
- ▭ PNF Fire Perimeters

Type	Name	X	Y
Drop Point	DP 1	-120.7544	39.8626
Drop Point	DP 10	-121.2877	39.9565
Drop Point	DP 100	-121.3353	39.6609
Drop Point	DP 2	-120.7640	39.8626
Drop Point	DP 20	-120.7842	39.8292
Drop Point	DP 21	-120.7821	39.8141
Drop Point	DP 22	-121.2387	39.7817
Drop Point	DP 23	-121.2073	39.6434
Drop Point	DP 24	-121.1821	39.6273
Drop Point	DP 25	-121.2497	39.5931
Drop Point	DP 3	-120.8034	39.8550
Drop Point	DP 4	-120.8135	39.8553
Drop Point	DP 5	-120.8355	39.8474
Drop Point	DP 51	-121.2079	39.6888
Drop Point	DP 55	-121.2186	39.7081
Drop Point	DP 6	-120.7603	39.8413
Drop Point	Four Corner	-121.1855	39.6304
Drop Point	Canyon Helibase	-120.9471	39.9448
Helibase	Belden Helispot	-121.2713	40.0179
ICP	ICP	-120.8702	39.8696
Repeater	Bear Hill	-121.3713	39.8086
Repeater	C10	-120.6236	39.7046
Repeater	C18	-121.1873	40.0375
Repeater	C3	-120.8960	40.0446
Repeater	C7	-121.2186	39.7081
Repeater	Lexington Hill	-121.0082	39.6796
Repeater	Sunset Hill	-121.3000	39.5240
Safety Zone	SZ 101 Nelson Point	-120.8509	39.8521
Safety Zone	SZ 102 G-Spur	-120.8355	39.8475
Sling	Crest Sling	-121.2626	39.9753
Spike	Brush Creek	-121.3383	39.6907
Spike	Challenge	-121.2235	39.4878
Spike	Fall River	-121.1814	39.6496
Spike	Hartman	-121.1299	39.7593
Staging	Belden	-121.2626	40.0241
Staging	Sloat Staging	-120.7257	39.8648
Water Source	Water Source	-120.8146	39.8263
Water Source	Water Source	-120.7906	39.8428
Water Source	Water Source	-120.8165	39.8118
Water Source	Water Source	-120.7885	39.8559
Water Source	Water Source	-120.7613	39.8543
Water Source	Water Source	-121.2429	39.7196

Data Collected 1200 7/8/2008