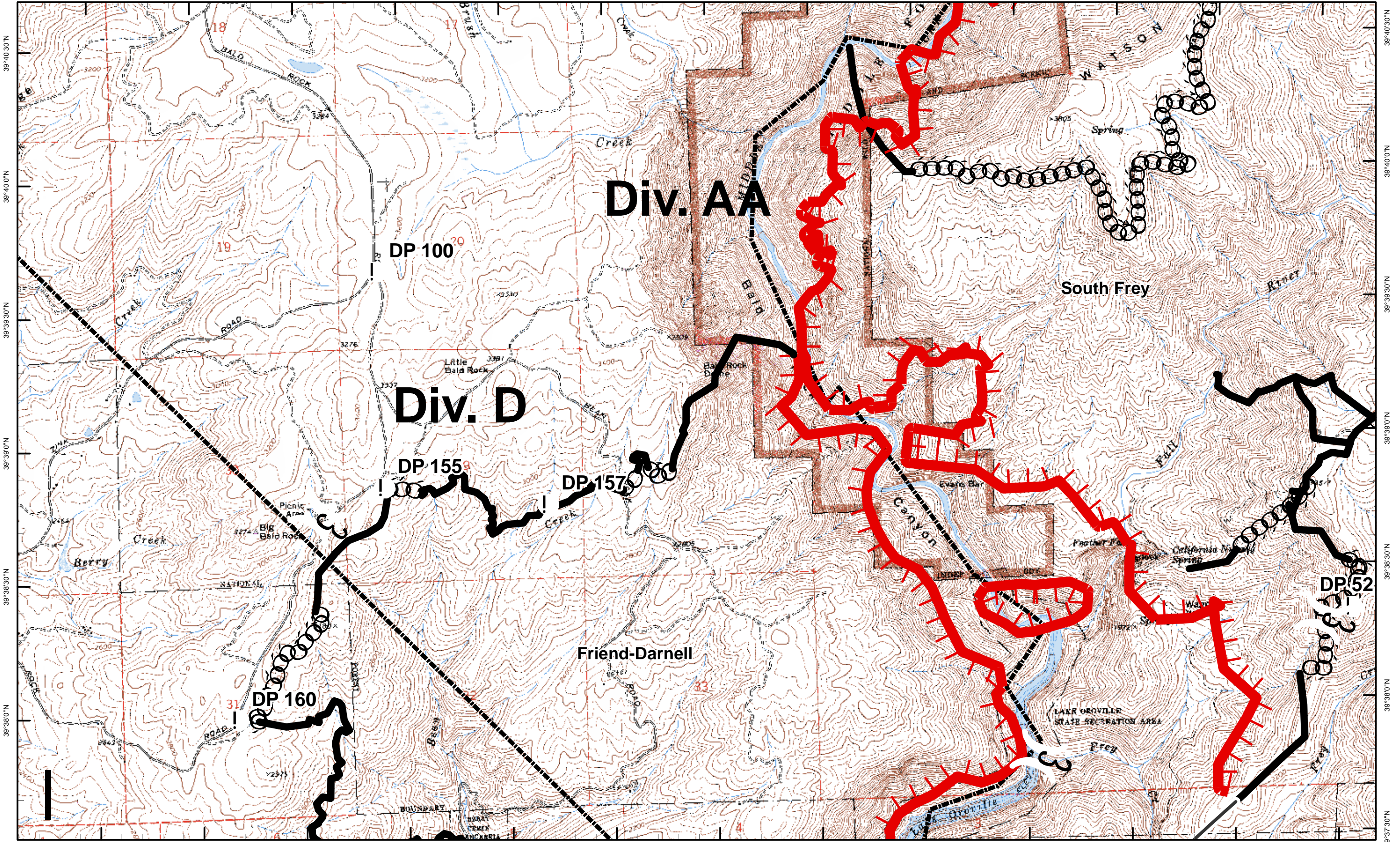


Canyon Complex Branch IV July 14, 2008

121°21'30"W 121°21'0"W 121°20'30"W 121°20'0"W 121°19'30"W 121°19'0"W 121°18'30"W 121°18'0"W 121°17'30"W 121°17'0"W 121°16'30"W 121°16'0"W 121°15'30"W



39°40'30"N
39°40'0"N
39°39'30"N
39°39'0"N
39°38'30"N
39°38'0"N

39°40'30"N
39°40'0"N
39°39'30"N
39°39'0"N
39°38'30"N
39°38'0"N

121°21'30"W 121°21'0"W 121°20'30"W 121°20'0"W 121°19'30"W 121°19'0"W 121°18'30"W 121°18'0"W 121°17'30"W 121°17'0"W 121°16'30"W 121°16'0"W 121°15'30"W

