

# Canyon Complex

## Aviation

### Branch III/IV/V/VI

#### CA-PNF-539

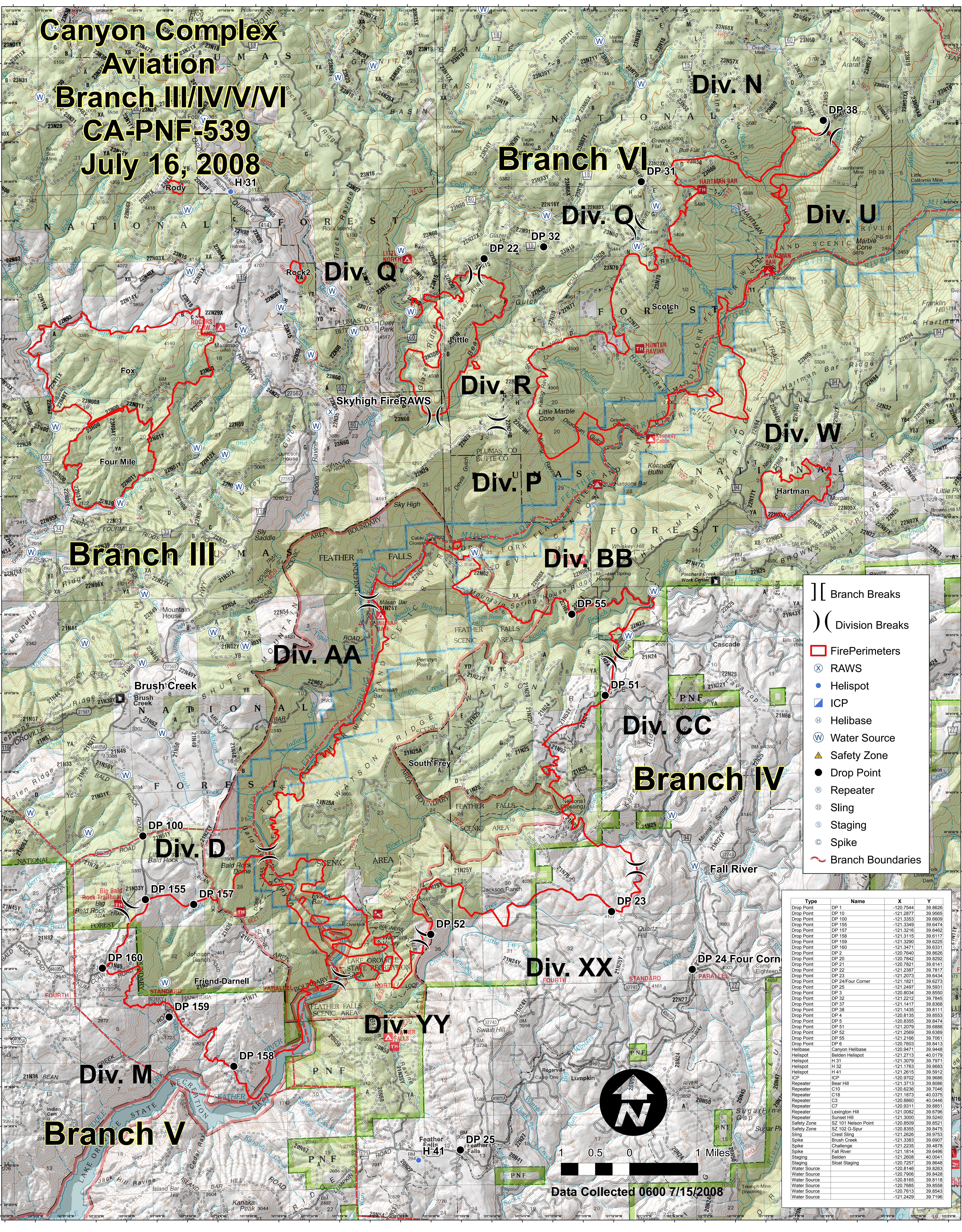
#### July 16, 2008

## Branch VI

## Branch III

## Branch IV

## Branch V



] [ Branch Breaks  
 ) ( Division Breaks  
▭ Fire Perimeters  
⊗ RAWS  
● Helispot  
▣ ICP  
⊕ Helibase  
⊙ Water Source  
▲ Safety Zone  
● Drop Point  
⊕ Repeater  
⊕ Sling  
⊕ Staging  
⊕ Spike  
~ Branch Boundaries

Type	Name	X	Y
Drop Point	DP 1	-120.7544	39.8626
Drop Point	DP 10	-121.2877	39.9565
Drop Point	DP 100	-121.3353	39.9606
Drop Point	DP 155	-121.3349	39.6474
Drop Point	DP 157	-121.3216	39.8462
Drop Point	DP 158	-121.3115	39.8117
Drop Point	DP 159	-121.3290	39.6225
Drop Point	DP 160	-121.3471	39.6331
Drop Point	DP 2	-120.7640	39.8626
Drop Point	DP 20	-120.7821	39.8292
Drop Point	DP 21	-120.7821	39.8141
Drop Point	DP 22	-121.2387	39.7917
Drop Point	DP 23	-121.2073	39.6434
Drop Point	DP 24/4 Corn	-121.1821	39.6273
Drop Point	DP 25	-121.2497	39.9331
Drop Point	DP 3	-120.8034	39.8550
Drop Point	DP 32	-121.2212	39.7845
Drop Point	DP 37	-121.1417	39.8368
Drop Point	DP 38	-121.1435	39.8111
Drop Point	DP 4	-120.8135	39.8553
Drop Point	DP 5	-120.8355	39.8474
Drop Point	DP 51	-121.2079	39.9888
Drop Point	DP 52	-121.2569	39.6389
Drop Point	DP 55	-121.2166	39.7061
Drop Point	DP 6	-120.7603	39.8413
Helibase	Canyon Helibase	-120.9471	39.9448
Helispot	Belden Helispot	-121.2713	40.0179
Helispot	H 31	-121.3079	39.7971
Helispot	H 32	-121.1763	39.8683
Helispot	H 41	-121.2615	39.9312
ICP	ICP	-120.9702	39.9686
Repeater	Bear Hill	-121.3713	39.8086
Repeater	C10	-120.6236	39.7046
Repeater	C18	-121.1873	40.0375
Repeater	C3	-120.8860	40.0446
Repeater	C7	-121.2698	39.9753
Repeater	Lexington Hill	-121.0082	39.6796
Repeater	Sunset Hill	-121.3000	39.8240
Safety Zone	SZ 101 Nelson Point	-120.8509	39.8521
Safety Zone	SZ 102 G-Spur	-120.8355	39.8475
Staging	Crest Sling	-121.2713	40.0179
Spike	Brush Creek	-121.3383	39.6907
Spike	Challenge	-121.2235	39.4878
Spike	Fall River	-121.1814	39.8476
Staging	Bedden	-120.9311	39.8851
Staging	Sloat Staging	-120.7257	39.8648
Water Source		-120.8146	39.8263
Water Source		-120.7906	39.8428
Water Source		-120.8165	39.8118
Water Source		-120.7885	39.8558
Water Source		-120.7613	39.8543
Water Source		-121.2429	39.7196

Data Collected 0600 7/15/2008