

Transportation Map

121°07'30"

R8E

121°00'00"

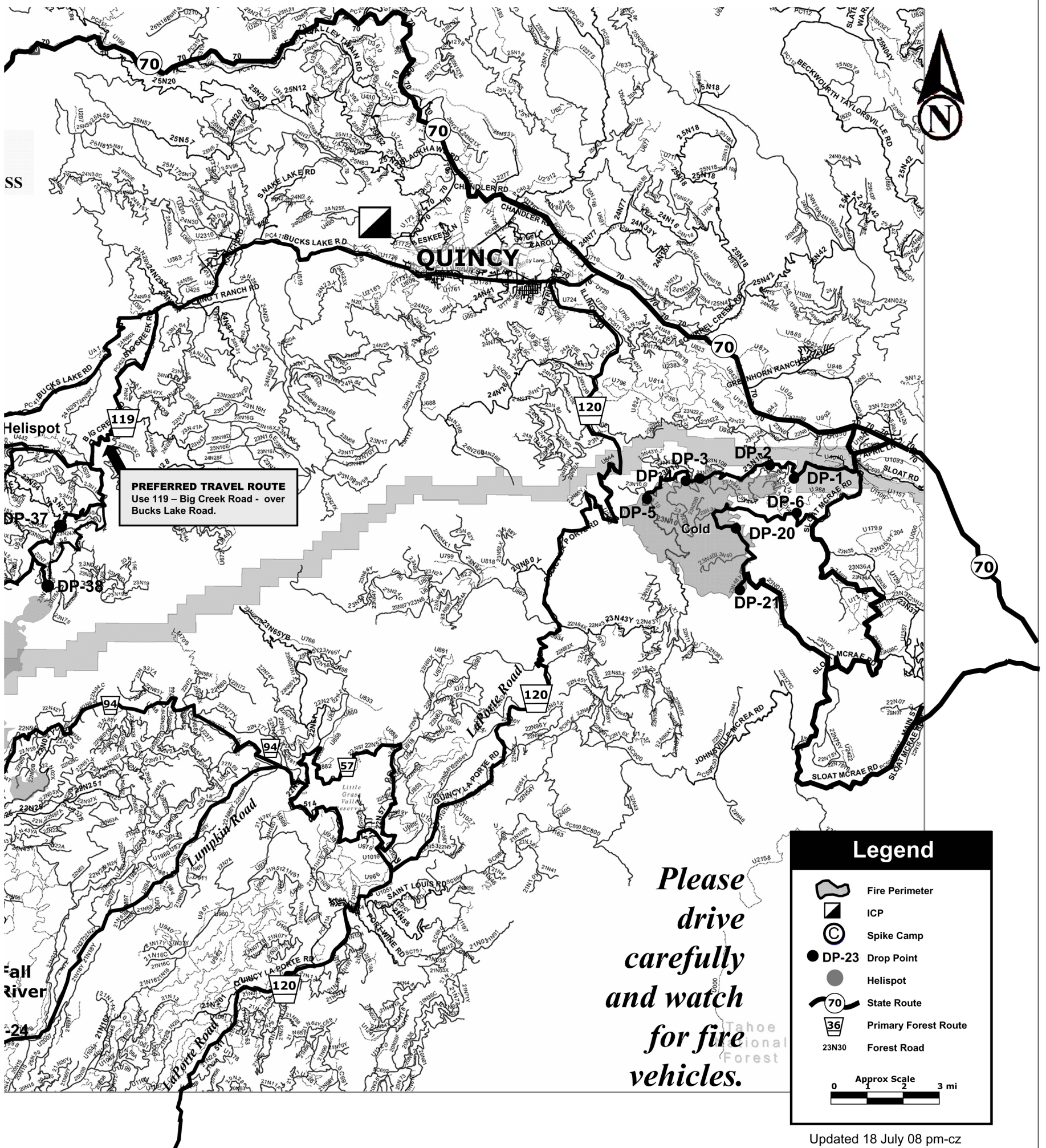
R9E

120°52'30"

R10E

120°45'00"

R11E



PREFERRED TRAVEL ROUTE
Use 119 - Big Creek Road - over Bucks Lake Road.

Legend

- Fire Perimeter
- ICP
- Spike Camp
- DP-23 Drop Point
- Helispot
- State Route
- Primary Forest Route
- Forest Road

Approx Scale 0 1 2 3 mi

*Please
drive
carefully
and watch
for fire
vehicles.*

Updated 18 July 08 pm-cz